



Manuals.plus /

› Sunrosa /

› User Manual for Sunrosa Frameless Double Sliding Tub Shower Door 60" W x 60" H

Sunrosa B0CQJ782NL

Sunrosa Frameless Double Sliding Tub Shower Door

User Manual

Model: B0CQJ782NL

1. INTRODUCTION

Thank you for choosing the Sunrosa Frameless Double Sliding Tub Shower Door. This manual provides essential information for the safe and efficient installation, operation, and maintenance of your new shower door. Please read all instructions carefully before beginning installation and keep this manual for future reference.

This product is designed to provide a modern and functional enclosure for your tub or shower area, featuring durable tempered glass and a smooth soft-close sliding system.

2. SAFETY INFORMATION

Your safety is paramount. Please adhere to the following safety guidelines during installation and use:

- Always wear appropriate personal protective equipment, including safety glasses and gloves, during installation.
- This product contains heavy glass panels. A minimum of two people is required for safe handling and installation.
- Ensure the installation surface (walls, tub rim) is structurally sound and capable of supporting the weight of the shower door.
- Do not use power tools near water or in damp conditions without proper safety precautions.
- Handle glass panels with extreme care. Avoid striking edges or corners, as this can cause the glass to shatter.
- Keep children and pets away from the installation area.
- After installation, ensure all screws and fasteners are securely tightened.

3. PRODUCT OVERVIEW

3.1 Dimensions and Components

The Sunrosa Frameless Double Sliding Tub Shower Door is designed for adjustable installation. Please verify your measurements before purchase and installation.



Figure 3.1: Shower Door Dimensions. Note: C indicates the height from the bottom of the top track to the floor.

- **Adjustable Width:** 56 1/8" - 60" (1424-1524 mm)
- **Height:** 60" (1524 mm)
- **Walk-in Opening:** 24" - 28"
- **Glass Thickness:** 5/16" (8mm)

3.2 Key Features

- **Premium Material:** Shower door frame and handle are crafted from high-quality stainless steel, ensuring resistance to corrosion and rust in humid environments. This provides a stable and durable structure.

- **Safety Tempered Glass:** Constructed with 5/16" (8mm) SGCC certified clear tempered glass, offering strength and resistance against breakage. The design is reversible for left or right-side installation.



Figure 3.2: 5/16" (8mm) Clear Tempered Glass.

- **Soft-Close System:** Features robust stainless steel buffer pulleys that glide smoothly along the tracks. An anti-jumping design ensures effortless and quiet sliding operation.

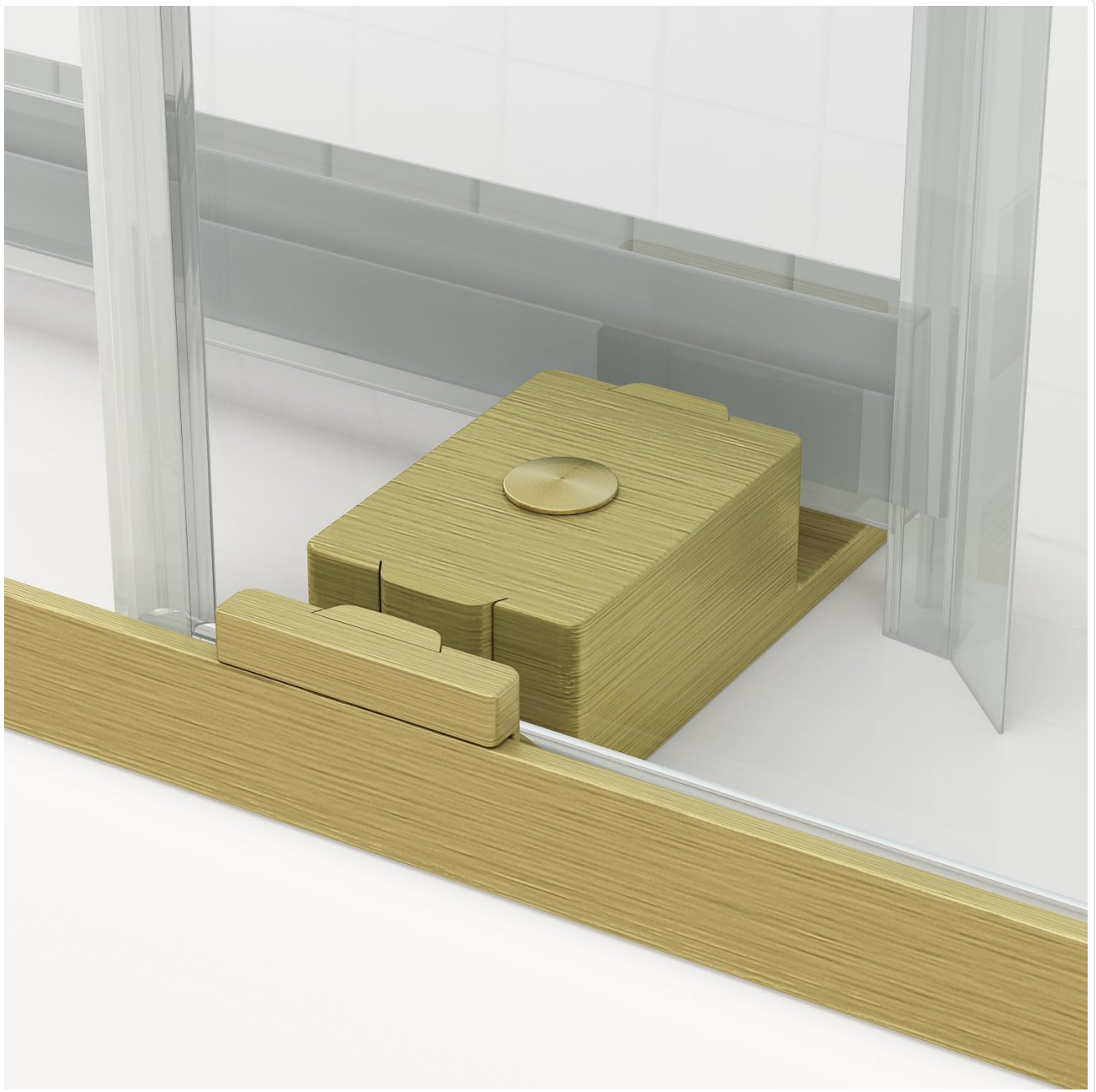


Figure 3.3: Soft-Close System Mechanism.

- **Water Containment:** A double sliding seal strip runs along the entire length of the glass panels, effectively keeping bathwater within the enclosure and ensuring your bathroom floor remains dry.
- **Easy-Clean Nano Coating:** The glass is treated with a generous nano-coating, which helps repel water and soap scum, making cleaning easier and reducing stain buildup.



Figure 3.4: Generous Nano Coating Benefits.

4. SETUP AND INSTALLATION

4.1 Before You Begin

Ensure you have all necessary parts and tools before starting the installation. Refer to the packing list for included components.

Tools You May Need:

- Measuring Tape
- Level
- Drill
- Drill Bits (appropriate for wall material)

- Screwdriver (Phillips and Flathead)
- Caulking Gun and Silicone Sealant (mildew-resistant)
- Pencil
- Utility Knife

4.2 Step-by-Step Installation Guide

While detailed steps are provided in the separate installation manual included with your product, here is a general overview of the process:

1. **Measure and Prepare:** Carefully measure your tub or shower opening to confirm compatibility. Ensure the walls are plumb and the tub rim is level.
2. **Install Wall Profiles:** Secure the vertical wall profiles to the bathroom walls using appropriate fasteners. Use a level to ensure they are perfectly vertical.
3. **Install Top and Bottom Tracks:** Attach the top and bottom tracks to the wall profiles. Ensure the bottom track is properly aligned with the tub rim and the top track is level.
4. **Install Fixed Glass Panel:** Carefully place the fixed glass panel into its designated position within the tracks and secure it according to the instructions.
5. **Install Sliding Glass Panel:** Attach the rollers to the sliding glass panel and then carefully hang the panel onto the top track. Guide the bottom of the panel into the bottom track.
6. **Install Handles:** Attach the handles to the glass panels.
7. **Install Soft-Close Mechanism:** Integrate the soft-close components into the track system as per the specific instructions to ensure smooth operation.
8. **Apply Sealant:** Apply a continuous bead of mildew-resistant silicone sealant along the exterior joints of the shower door frame where it meets the walls and tub rim to ensure water containment. Allow adequate drying time before use.
9. **Test Operation:** Gently slide the doors back and forth to ensure smooth operation and proper engagement of the soft-close system. Check for any obstructions.

Note: The reversible design allows for installation on either the left or right side, depending on your bathroom layout.

5. OPERATING THE SHOWER DOOR

The Sunrosa Frameless Double Sliding Tub Shower Door is designed for ease of use. To open or close the door, gently grasp the handle and slide the glass panel along the top and bottom tracks. The integrated soft-close system will engage as the door approaches its closed position, providing a smooth and quiet finish.

GENEREROUS NANO COATING



Figure 5.1: Shower Door Handle.

Avoid forcing the door or applying excessive pressure, as this can damage the rollers or tracks. If the door does not slide smoothly, refer to the troubleshooting section.

6. MAINTENANCE

Regular cleaning and maintenance will ensure the longevity and pristine appearance of your Sunrosa shower door.

6.1 Cleaning the Glass

Due to the easy-clean nano coating, maintaining the glass is simple:

- After each use, rinse the glass with clean water to remove soap residue.

- For routine cleaning, use a soft cloth or sponge with a mild, non-abrasive glass cleaner.
- Avoid using abrasive cleaners, scouring pads, or harsh chemicals (e.g., ammonia-based cleaners, bleach) as they can damage the nano coating and the glass surface.
- Wipe dry with a clean, lint-free cloth or squeegee to prevent water spots.

6.2 Cleaning the Metal Components

- Clean the brushed gold finish and other metal parts with a soft, damp cloth and mild soap.
- Do not use abrasive cleaners, steel wool, or harsh chemicals, as these can scratch or damage the finish.
- Dry thoroughly after cleaning to prevent water spots and maintain the finish.

6.3 Track and Roller Maintenance

- Periodically inspect the top and bottom tracks for any debris, soap scum, or hair that might impede smooth operation. Clean as necessary.
- Check the rollers for smooth movement. If they become stiff, clean them and apply a small amount of silicone-based lubricant (do not use oil-based lubricants).

7. TROUBLESHOOTING

If you encounter any issues with your shower door, refer to the table below for common problems and their solutions.

Problem	Possible Cause	Solution
Door does not slide smoothly.	Debris in track, dirty rollers, misaligned track.	Clean tracks and rollers. Lubricate rollers with silicone spray. Check track alignment with a level and adjust if necessary.
Water leaks from the bottom or sides.	Seal strip damaged or improperly installed, insufficient sealant.	Inspect and replace damaged seal strips. Reapply silicone sealant to exterior joints where needed. Ensure bottom guide is correctly positioned.
Door feels loose or wobbly.	Loose screws or fasteners.	Check and tighten all mounting screws and fasteners on wall profiles and tracks.
Soft-close system not engaging.	Mechanism obstructed or misaligned.	Inspect the soft-close components for obstructions. Ensure they are properly aligned and free to move.

If the problem persists after attempting these solutions, please contact customer support.

8. SPECIFICATIONS

Attribute	Specification
Brand	Sunrosa
Model Number	B0CQJ782NL
Dimensions (W x H)	Adjustable 56 1/8"-60" (1424-1524 mm) W x 60" (1524 mm) H
Walk-in Opening	24"-28"
Glass Thickness	5/16" (8mm) SGCC Certified Tempered Glass
Material	Glass, Stainless Steel (frame and handle)
Finish	Brushed Gold
Style	Modern, Frameless
Assembly Required	Yes
Special Features	Soft-Close System, Easy-Clean Nano Coating, Reversible Installation, Double Sliding Seal Strip

9. WARRANTY AND SUPPORT

Sunrosa stands behind the quality of its products. This shower door comes with a standard manufacturer's warranty covering defects in materials and workmanship under normal use and service. Please refer to the warranty card included with your purchase for specific terms and conditions, including the warranty period and coverage details.

For technical assistance, replacement parts, or warranty claims, please contact Sunrosa Customer Support:

- **Website:** Visit the official Sunrosa website (if available, link not provided in source data)
- **Email:** support@sunrosa.com (example email)
- **Phone:** 1-800-XXX-XXXX (example phone number)

Please have your model number (B0CQJ782NL) and proof of purchase ready when contacting support.