

Geniatech APC

Geniatech APC Android 11 Smart TV Box User Manual

Model: APC

- Introduction
- Product
- Overview
- Setup
- Operation
- Features
- Applications
- Maintenance
- Troubleshooting
- Specifications
- Support

1. INTRODUCTION

This manual provides comprehensive instructions for the installation, operation, and maintenance of your Geniatech APC Android 11 Smart TV Box. Please read this manual thoroughly before using the device to ensure proper functionality and to maximize its capabilities. This device is designed for various applications, including digital signage, media playback, and industrial communication.

2. PRODUCT OVERVIEW

The Geniatech APC is a compact and powerful Android 11-based mini PC designed for robust performance in demanding environments. It features a durable construction with a metal bottom shell and a plastic top shell, engineered for efficient heat dissipation.

2.1 Device Components



The Geniatech APC device, showcasing its compact design and various ports on the side.

2.2 Ports and Connectors

The device is equipped with a variety of connectors to support diverse applications and peripherals.

Features various connectors

The device features various connectors, including HDMI, USB Host and the industrial widely used connector RS232. With RS232, can easily communicate with industrial machines and network equipment.



A detailed view highlighting the connectivity options: USB 2.0, USB 3.0, TF Slot, Power input, Network port, IR receiver, DC power input, RS232 serial port, HDMI output, and LAN port.

- **USB 2.0 Ports:** For connecting standard USB devices such as keyboards, mice, or storage.
- **USB 3.0 Port:** For high-speed data transfer with compatible USB 3.0 devices.
- **TF Slot:** For inserting a TransFlash (MicroSD) card to expand storage.
- **NET (Ethernet) Port:** For wired network connection.
- **IR (Infrared) Receiver:** For receiving signals from the remote control.
- **DC Power Input:** For connecting the power adapter.
- **RS232 Port:** An industrial serial port for communication with industrial machines and network equipment.
- **HDMI OUT Port:** For connecting to a display device (TV, monitor) to output video and audio.
- **LAN Port:** Another name for the Ethernet port, for wired network connectivity.

3. SETUP

Follow these steps to set up your Geniatech APC device.

1. **Connect to Display:** Connect one end of an HDMI cable to the **HDMI OUT** port on the Geniatech APC and the other end to an HDMI input on your television or monitor.

2. **Connect to Power:** Plug the provided power adapter into the **DC Power Input** port on the device, then plug the adapter into a wall outlet.
3. **Network Connection (Optional):**
 - **Wired:** Connect an Ethernet cable from your router or network switch to the **NET (LAN)** port on the device.
 - **Wireless:** The device supports dual-band Wi-Fi. You will configure Wi-Fi settings after initial boot-up through the Android interface.
4. **Connect Peripherals (Optional):** Connect a USB keyboard, mouse, or other USB devices to the **USB 2.0** or **USB 3.0** ports.
5. **Power On:** The device should power on automatically once connected to power. If not, press the power button located near the IR receiver.
6. **Initial Configuration:** Follow the on-screen prompts to complete the initial Android setup, including language selection, network configuration, and Google account login (if desired).

4. OPERATING INSTRUCTIONS

4.1 Navigating the Android Interface

The Geniatech APC runs on Android 11, providing a familiar and intuitive user experience. You can navigate using the included remote control or by connecting a USB mouse and keyboard.

- **Home Screen:** Displays your installed applications, widgets, and quick access shortcuts.
- **App Drawer:** Access all installed applications.
- **Settings:** Configure network, display, sound, storage, applications, and system preferences.

4.2 Using the Remote Control

Point the remote control towards the IR receiver on the front of the device. The remote allows you to navigate menus, select items, adjust volume, and control media playback.

4.3 Installing and Managing Applications

You can install applications from the Google Play Store (if configured) or by sideloading APK files. To manage applications, go to **Settings > Apps**.

4.4 Media Playback

The device supports 4K2K Ultra HD and 1080p resolution playback. Use pre-installed media players or download your preferred applications for video and audio content. Connect external storage via USB or TF card for local media files.

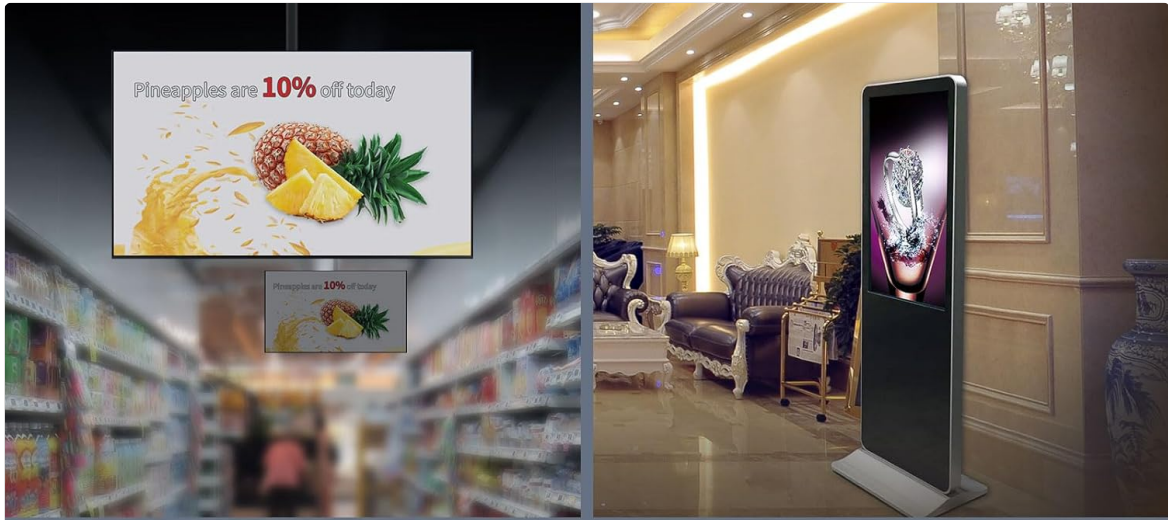
4.5 Digital Signage Functionality

For digital signage applications, the device supports a Remote Device Management System (MDM). This allows for remote control of online devices, content distribution, application deployment, and service push, making it suitable for commercial advertising and menu displays.

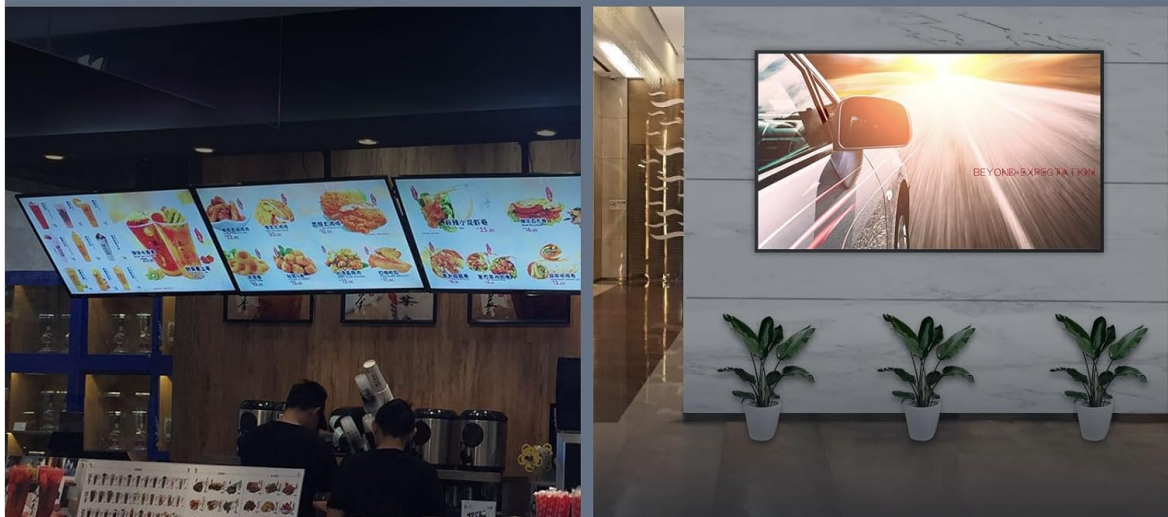
5. KEY FEATURES

- **Operating System:** Android 11.

- **Processor:** Amlogic S905X4 64-bit quad-core ARM Cortex-A55.
- **Memory & Storage:** 2GB RAM and 8GB ROM.
- **Video Output:** 4K2K Ultra HD playback and real-time decoding, supporting 4K and 1080p resolutions.
- **Audio:** Dolby Surround Sound (Dolby AC-4) for enhanced audio experience.



Multiple application scenarios

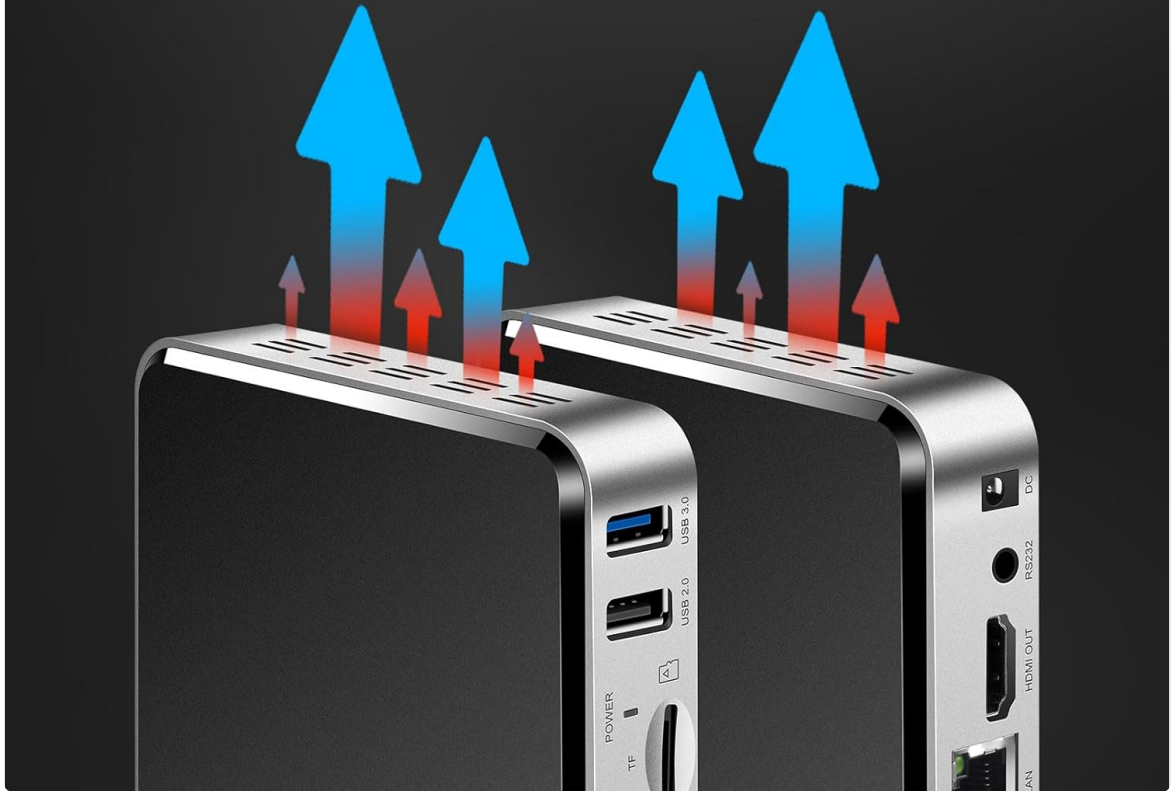


An image illustrating the Dolby Surround Sound feature (Dolby AC-4) of the device, enhancing the audio experience for users.

- **Connectivity:** Dual-band Wi-Fi, Ethernet (LAN), Bluetooth, USB 2.0, USB 3.0, TF Card Slot, HDMI OUT, RS232.
- **Industrial Communication:** RS232 port for easy communication with industrial machines and network equipment.
- **Remote Management:** Support for Remote Device Management System (MDM) for centralized control and content deployment.
- **Heat Dissipation:** Excellent heat dissipation performance with a metal bottom shell and plastic top shell featuring vents for internal ventilation.

Excellent heat dissipation performance

Metal bottom shell and the plastic upper shell in the middle frame are equipped with vents on both sides to form internal ventilation circulation, so that the heat dissipation effect of the whole machine is better



An illustration demonstrating the excellent heat dissipation performance of the device, achieved through vents on both sides of its metal and plastic casing, ensuring stable operation.

- **Reliability:** Built-in hardware watchdog to monitor system status in real-time, ensuring stable and continuous operation (7x24h).

Higher reliability

built-in hardware watchdog can monitor the running status of the system in real time to ensure that the product can work stably and continuously for 7x24h

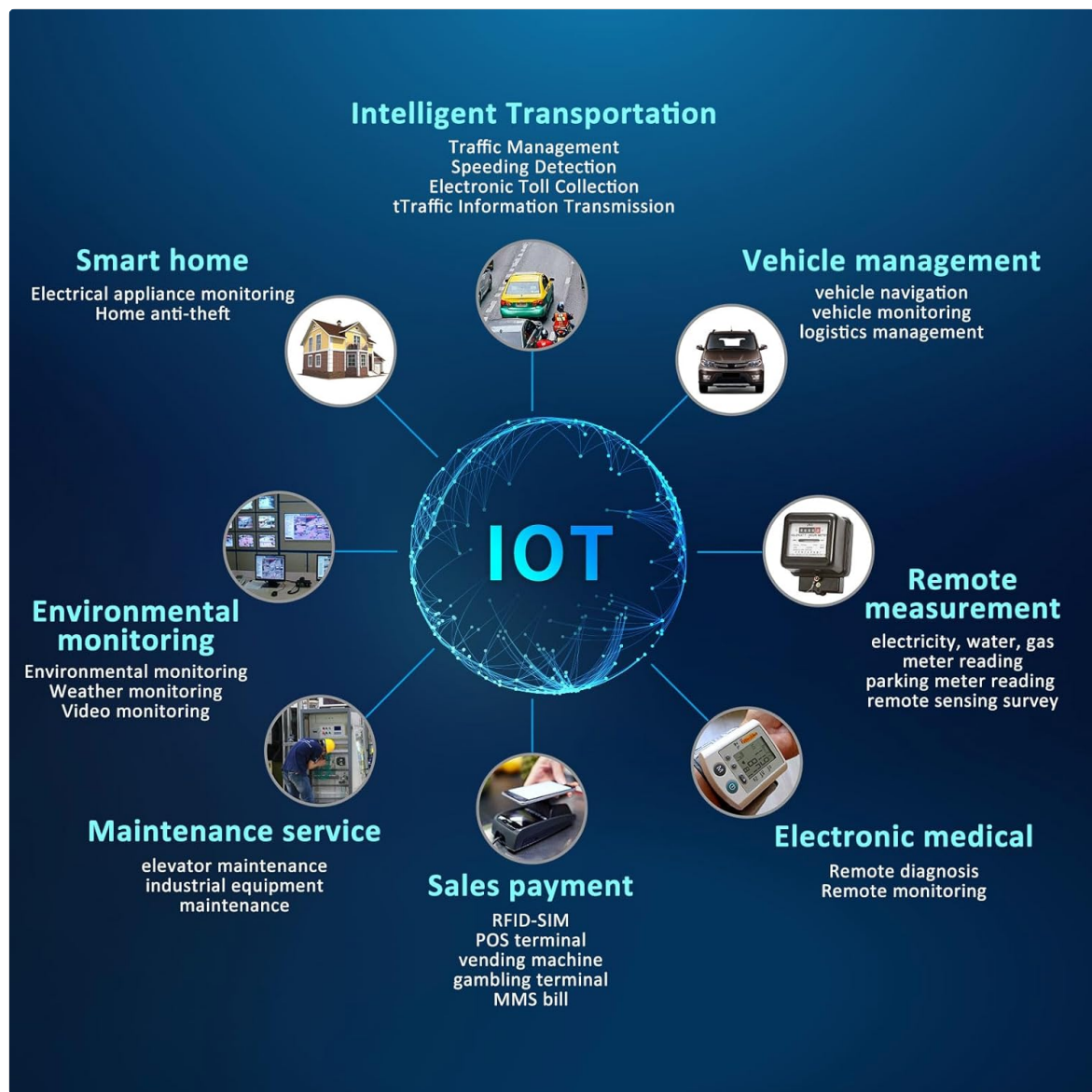


A graphic depicting the built-in hardware watchdog, which monitors the system's running status in real-time to ensure stable and continuous operation for 24/7.

6. APPLICATIONS

The Geniatech APC is versatile and suitable for a wide range of applications:

- **Digital Signage:** Ideal for advertising screen displays, commercial advertising, and menu displays.



Various scenarios where the Geniatech APC can be utilized, such as advertising screens, hotel interactive TVs, and menu displays in commercial settings.

- **Hotel Intelligent Interactive TV:** Enhances guest experience with interactive content.
- **IPTV DVB OTT Integration:** Supports various streaming and broadcast integration needs.
- **Network Video Calling:** Facilitates video communication.
- **Internet of Things (IoT):** Applicable in various IoT scenarios including:
 - Smart home (electrical appliance monitoring, home anti-theft)
 - Vehicle management (vehicle navigation, vehicle monitoring, logistics management)
 - Remote measurement (electricity, water, gas meter reading, parking meter reading, remote sensing survey)
 - Maintenance service (elevator maintenance, industrial equipment maintenance)
 - Sales payment (RFID-SIM, POS terminal, vending machine, gambling terminal, MMS bill)
 - Electronic medical (remote diagnosis, remote monitoring)
 - Intelligent Transportation (traffic management, speeding detection, electronic toll collection, traffic information transmission)



A diagram showcasing the diverse applications of the device within the Internet of Things (IoT), including smart home, vehicle management, remote measurement, maintenance, sales payment, electronic medical, and intelligent transportation.

7. MAINTENANCE

Regular maintenance helps ensure the longevity and optimal performance of your Geniatech APC.

- **Cleaning:** Use a soft, dry cloth to clean the exterior of the device. Avoid using liquid cleaners or abrasive materials. Ensure vents are free from dust accumulation.
- **Software Updates:** Periodically check for system updates in the Android settings (**Settings > About device > System update**) to ensure you have the latest features and security patches.
- **Ventilation:** Ensure the device is placed in a well-ventilated area, away from direct sunlight or heat sources, to maintain optimal operating temperature and prevent overheating. Do not block the side vents.
- **Storage Management:** Regularly clear unnecessary files and uninstall unused applications to free up internal storage and maintain performance.

8. TROUBLESHOOTING

If you encounter issues with your Geniatech APC, refer to the following common problems and solutions.

Problem	Possible Cause	Solution
Device does not power on	Power adapter not connected or faulty; power outlet issue.	Ensure power adapter is securely connected to the device and a working power outlet. Try a different outlet.
No display on TV/monitor	HDMI cable loose or faulty; incorrect input selected on TV; device not powered on.	Check HDMI cable connections. Ensure TV is set to the correct HDMI input. Verify the device is powered on. Try a different HDMI cable or port on the TV.
Wi-Fi connection issues	Incorrect Wi-Fi password; out of range; router issue.	Verify Wi-Fi password in Settings > Network & internet > Wi-Fi . Move device closer to router. Restart router.
Remote control not responding	Batteries low or depleted; IR receiver blocked; remote not pointed correctly.	Replace remote control batteries. Ensure no obstructions between remote and device's IR receiver. Point remote directly at the device.
Applications crashing or freezing	Insufficient memory; app conflict; outdated app version.	Close background applications. Clear app cache (Settings > Apps > [App Name] > Storage > Clear cache). Update the application. Restart the device.

9. SPECIFICATIONS





Feature	Description
Brand	Geniatech
Model Name	APC
Operating System	Android 11
Processor	Amlogic S905X4 64-bit Quad-core ARM Cortex-A55
RAM	2GB
ROM	8GB
Resolution Support	4K2K Ultra HD playback / real time decoding, 1080p
Connectivity Technology	Wireless (Dual-band Wi-Fi), Bluetooth, Ethernet
Connector Types	USB 2.0, USB 3.0, TF Slot, HDMI OUT, RS232, DC Power Input, LAN
Audio Features	Dolby Surround Sound (Dolby AC-4)
Controller Type	Remote Control
Form Factor	TV Box / Mini PC
Color	Black
Special Features	Android OS, HDMI-out, Digital Signage Player, MDM Support, Hardware Watchdog, Excellent Heat Dissipation



10. WARRANTY AND SUPPORT

For warranty information and technical support, please refer to the documentation included with your purchase or visit the official Geniatech website. Keep your purchase receipt as proof of purchase for warranty claims. For further assistance, you may contact Geniatech customer support through their official channels.

© 2023 Geniatech. All rights reserved.

Related Documents - APC

	<p>Geniatech APC3566MINI User's Guide: Setup, Settings, and Specifications</p> <p>Comprehensive user guide for the Geniatech APC3566MINI media player, covering safety information, product features, detailed settings, troubleshooting, and specifications. Learn how to set up and use your device.</p>
	<p>Geniatech ATV390 Android Box User's Guide: Setup, Features, and Settings</p> <p>Comprehensive user guide for the Geniatech ATV390 Android Box, covering setup, product features, network settings, app management, troubleshooting, and specifications. Learn how to use your Android TV box effectively.</p>
	<p>Geniatech ATV316MAX Android TV Box User's Guide</p> <p>Comprehensive user's guide for the Geniatech ATV316MAX Android TV Box, covering setup, safety information, product features, settings configuration, app management, troubleshooting, and technical specifications.</p>
	<p>ULTRAHD 4K Capture Device U1000 User Manual</p> <p>The Geniatech U1000 is a plug-and-play 4K HDR capture device for gaming and live streaming. Compatible with Windows, macOS, and Linux, it supports 4K P60 HDMI input/output and 4K P30 capture/streaming, with microphone input and OBS integration.</p>

	<p>Geniatech Kloud Note User Manual: E-ink Digital Notebook and Reader Guide</p> <p>Explore the features and functionalities of the Geniatech Kloud Note (Kloudnote-Slim) E-ink tablet. This user manual provides detailed instructions on note-taking, reading, app management, device settings, and troubleshooting.</p>
	<p>APC-KP1-C Access Control Keypad User Manual</p> <p>User manual for the APC-KP1-C access control keypad by APC Automation Systems. Provides detailed information on installation, technical specifications, administrator operations, user settings, sound and light indications, and system specifications for secure access control.</p>