

HEIMAN ZWAVE-HS1MS-US

HEIMAN Z-Wave Motion Sensor User Manual

Model: ZWAVE-HS1MS-US

1. PRODUCT OVERVIEW

The HEIMAN Z-Wave Motion Sensor is a wireless Passive Infrared (PIR) motion detector designed for smart home security and automation. It provides real-time app notifications upon detecting movement within its coverage area, enhancing home security and offering convenient monitoring for various scenarios.



Front view of the HEIMAN Z-Wave Motion Sensor, a compact, square-shaped device with a white body and a grey trim around the central lens.

Key Features:

- **Motion Detection:** Utilizes PIR technology to detect movement.
- **Wide Coverage:** Offers a 90-degree coverage range and a detection distance of up to 26 feet (approximately 7 meters).
- **Real-Time Notifications:** Sends instant alerts to your smartphone via a compatible Z-Wave hub and app.
- **Pet Identification:** Designed to intelligently filter out false alarms caused by pets.
- **Long Battery Life:** Battery-powered with a low battery alert function, providing extended operation.
- **Versatile Application:** Suitable for monitoring residences, garages, entrances, and exits.

PIR Motion Sensor



Long standby time



high sensitivity



intelligent
Identify pets

An image highlighting key features of the PIR Motion Sensor: long standby time, high sensitivity, and intelligent pet identification, shown with corresponding icons.

Heiman

Smart Motion Sensor HS1MS

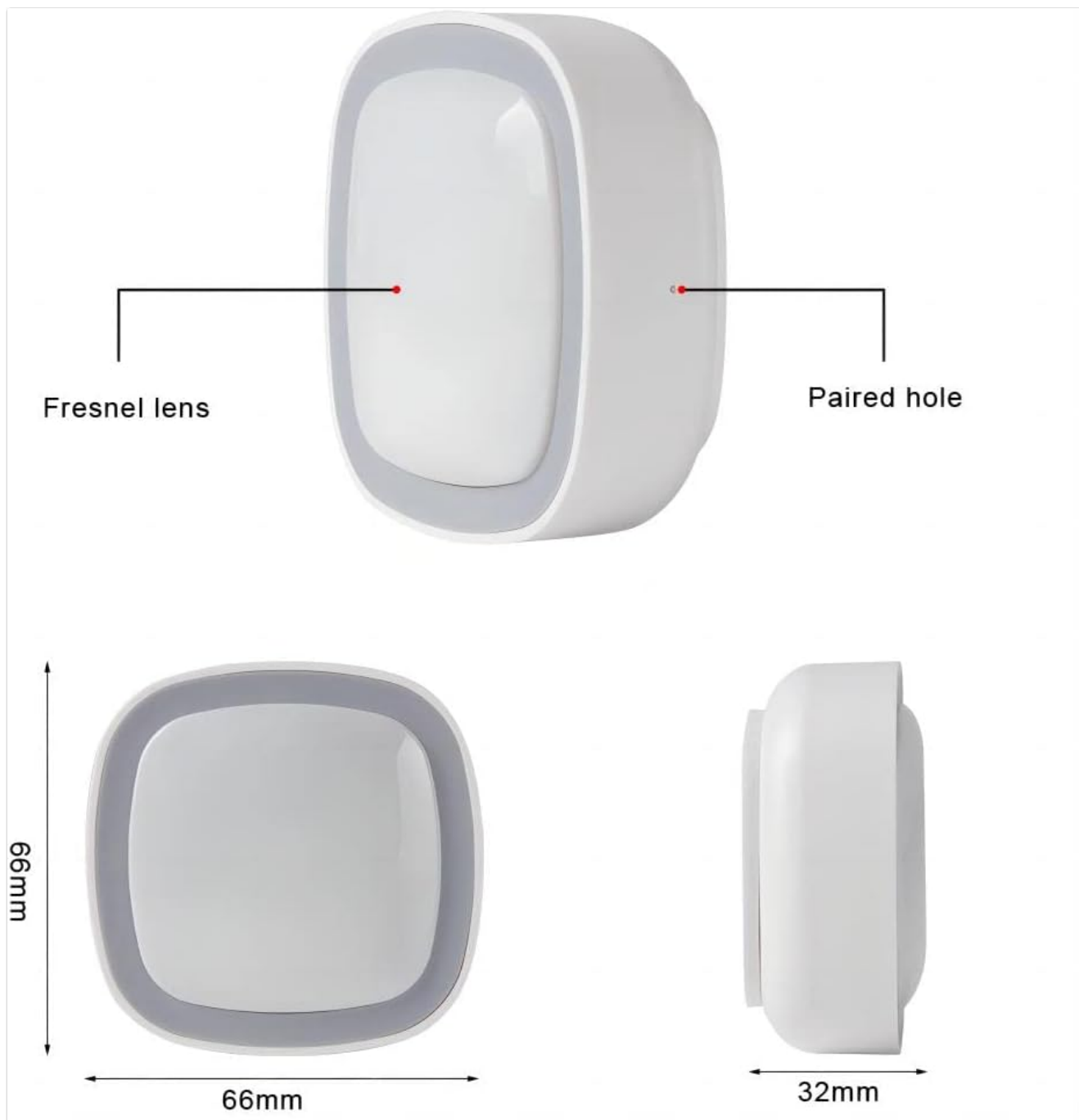
Guard each corner at home



An image showing the HEIMAN Smart Motion Sensor HS1MS mounted on a wall in a living room setting, illustrating its purpose to guard various areas of a home.

2. SPECIFICATIONS

Attribute	Value
Brand	HEIMAN
Model Number	ZWAVE-HS1MS-US
Color	Neutral
Power Source	Battery Powered
Battery Type	1 CR123A (included)
Battery Life	Up to 3 years
Item Weight	1.76 ounces (0.05 Kilograms)
Product Dimensions	2.7"D x 2.7"W x 1.07"H (68mm x 68mm x 27mm approx.)
Maximum Detection Range	26 feet (7 meters)
Detection Angle	90 degrees
Mounting Type	Wall Mount
Operating Temperature	-10°C to +50°C (14°F to 122°F)
Compatible Devices	Z-Wave Hub
Material	Plastic



Detailed diagram showing the dimensions of the motion sensor (66mm x 68mm x 32mm), pointing out the Fresnel lens and paired hole.

Detection range and distance

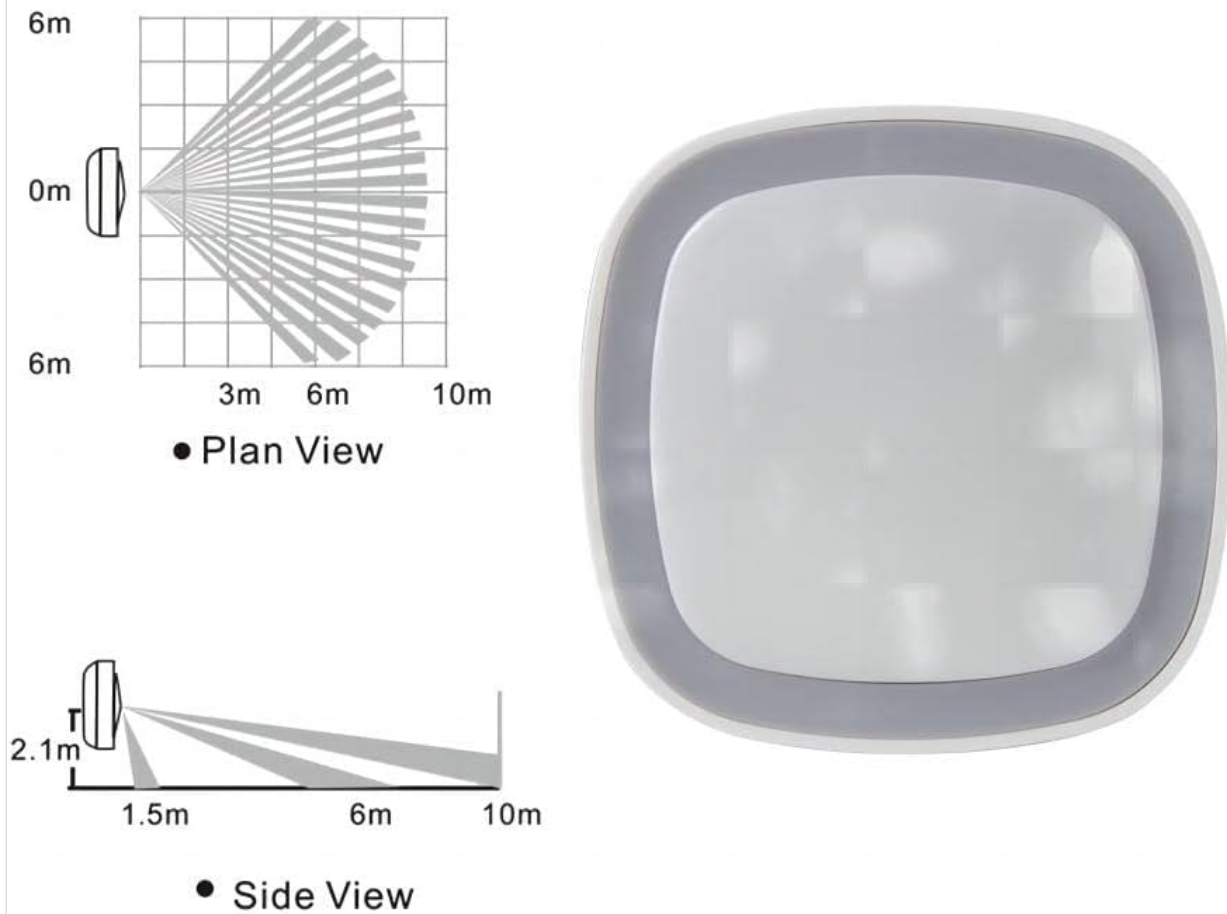


Diagram illustrating the motion sensor's detection range and distance, including both a plan view (90-degree coverage up to 10m) and a side view (detection height and distance).

3. SETUP

Follow these steps to set up your HEIMAN Z-Wave Motion Sensor:

3.1. Battery Installation

1. Gently open the back cover of the motion sensor.
2. Insert the included CR123A battery, ensuring correct polarity.
3. Close the back cover securely.



An exploded view of the motion sensor's back cover, revealing the battery compartment, a CR123A battery, and a small reset pin tool.

3.2. Pairing with a Z-Wave Hub

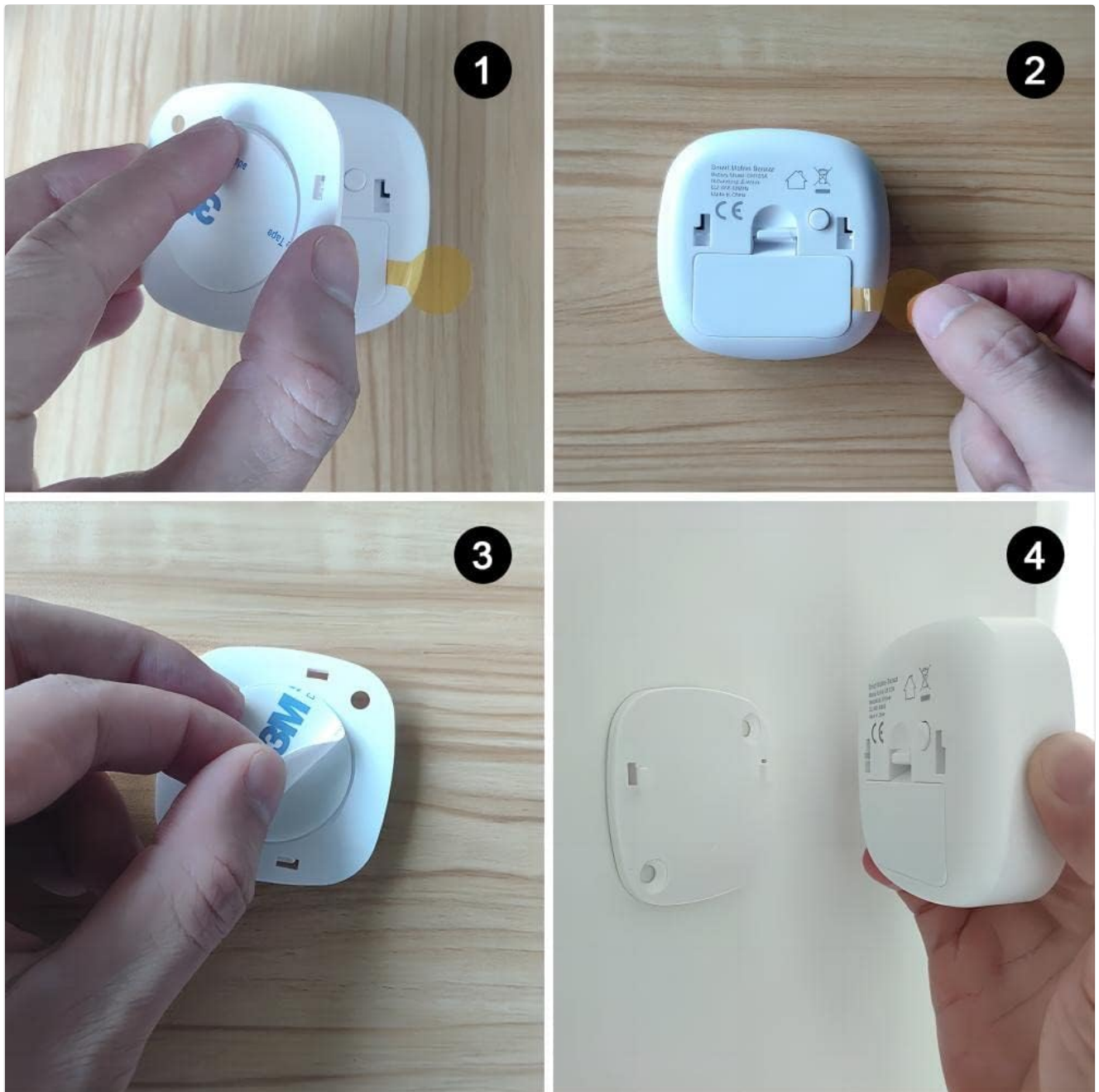
This device requires a Z-Wave hub for smart home integration. Refer to your Z-Wave hub's instructions for adding new devices.

1. Put your Z-Wave hub into inclusion (pairing) mode.
2. On the HEIMAN Motion Sensor, quickly press the small button on the back three times. The sensor's LED indicator may flash to confirm pairing mode.
3. Once successfully paired, the hub should recognize the device.

3.3. Mounting the Sensor

The sensor can be easily installed using the provided adhesive pad or screws.

1. Choose a suitable location for installation. For optimal detection, it is recommended to mount the sensor at approximately 6 feet (1.8 meters) high.
2. Clean the mounting surface thoroughly if using the adhesive pad.
3. Peel off the protective film from the adhesive pad and firmly press the sensor onto the desired surface.
4. Alternatively, use screws to secure the mounting plate to the wall, then attach the sensor to the plate.



A four-panel image demonstrating the installation process of the motion sensor using an adhesive pad, showing how to prepare the sensor and mount it on a wall.

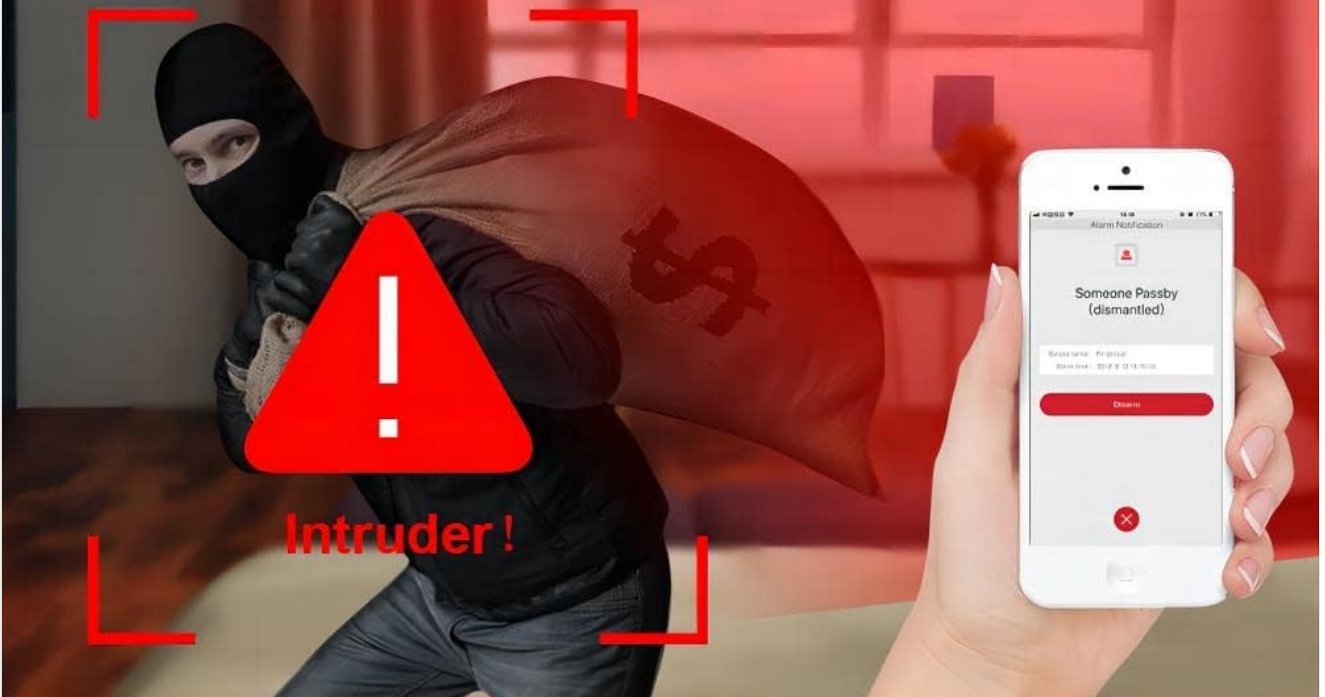
4. OPERATING INSTRUCTIONS

Once installed and paired with your Z-Wave hub, the HEIMAN Motion Sensor will begin monitoring for movement.

4.1. Motion Detection and Notifications

- When motion is detected within the sensor's range, it will send a signal to your Z-Wave hub.
- Your Z-Wave app will then provide real-time notifications on your smartphone or other connected devices.
- The sensor's intelligent pet identification feature helps minimize false alarms from small animals.

Within the scope of monitoring
Found intruder



A scenario depicting the motion sensor detecting an intruder, with a smartphone displaying a real-time 'Intruder!' notification.

Heiman

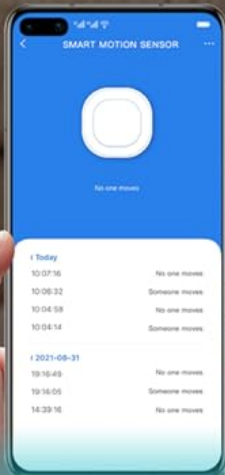


Pet identification

Automatically filter the error signal in case of pet passing

An image depicting a dog near the motion sensor, highlighting the sensor's pet identification feature which filters out false alarms caused by pets.

Heiman



Baby's protection

Remind you when your baby climb onto window

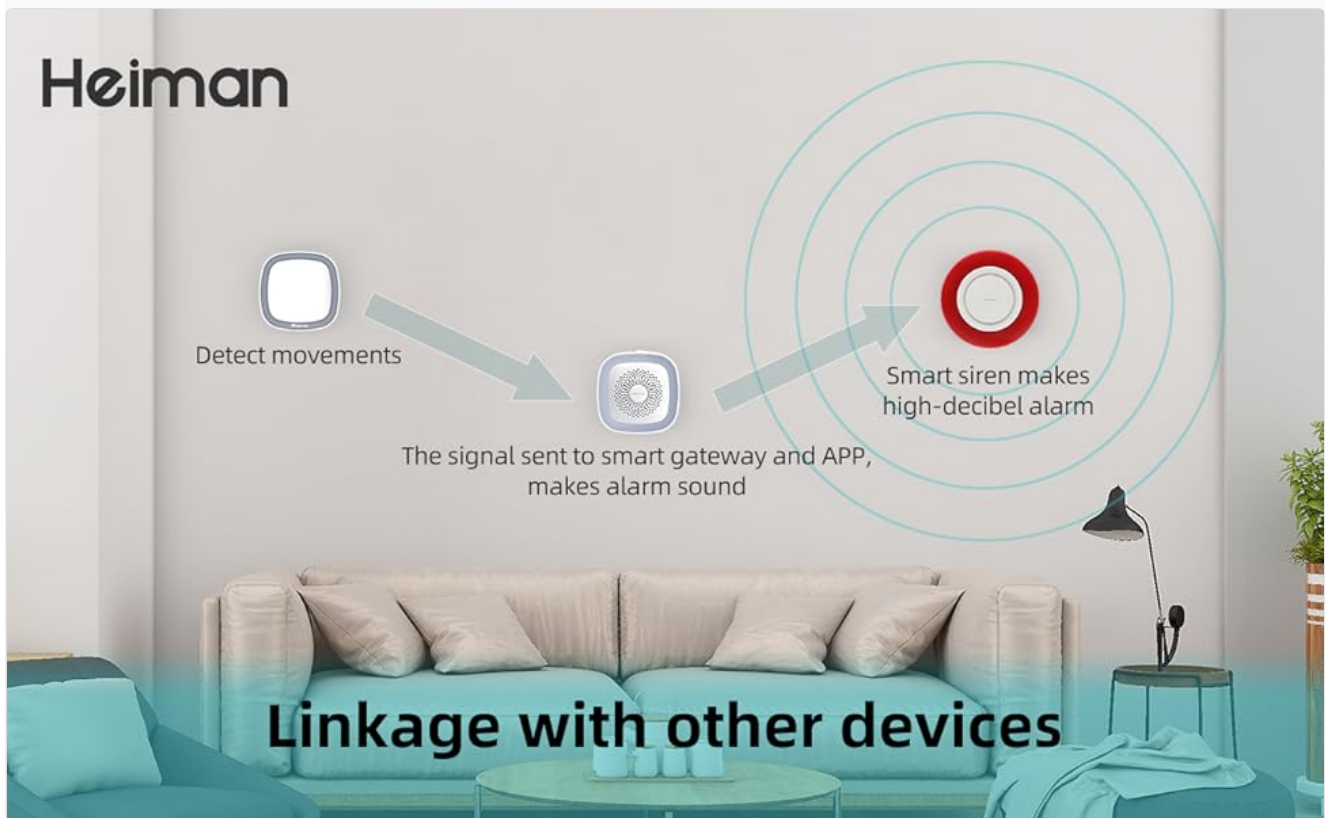
A scene showing a child playing, with a smartphone displaying a motion sensor app, emphasizing the sensor's use for monitoring and protecting babies.

4.2. Smart Home Automation

Integrate the motion sensor with other Z-Wave devices through your hub to create automated routines, such as:

- Turning on lights when motion is detected in a room.

- Triggering an alarm siren if unexpected motion occurs.
- Receiving alerts if children or elderly family members move into specific areas.



A diagram illustrating how the motion sensor links with a smart gateway and a smart siren, where motion detection triggers an alarm sound.

5. MAINTENANCE

5.1. Battery Replacement

The sensor is equipped with a low battery alert function. When the battery level is low, your Z-Wave hub and app will notify you. Replace the battery as follows:

1. Gently open the back cover of the motion sensor.
2. Remove the old CR123A battery.
3. Insert a new CR123A battery, ensuring correct polarity.
4. Close the back cover securely.

Standby for up to 3 years



An illustration of two battery cells, indicating a standby time of up to 3 years for the device.

5.2. Cleaning

Wipe the sensor's exterior with a soft, dry cloth. Avoid using abrasive cleaners or solvents, as these can damage the device.

6. TROUBLESHOOTING

If you encounter issues with your HEIMAN Z-Wave Motion Sensor, refer to the following common solutions:

- **Sensor not pairing with hub:**
 - Ensure your Z-Wave hub is in inclusion mode.
 - Press the sensor's pairing button three times quickly.
 - Verify the sensor has a fresh battery.
 - Try performing a factory reset on the sensor (refer to your hub's documentation for specific Z-Wave device reset procedures, often involving pressing the button multiple times or holding it down).

- **No motion detection or false alarms:**

- Check the sensor's placement. Ensure it is not obstructed and is within the recommended height and range.
- Avoid placing the sensor near heat sources, direct sunlight, or air vents, which can cause false triggers.
- Confirm the battery level is sufficient.
- If experiencing false alarms from pets, ensure the pet identification feature is active if supported by your hub, or adjust sensor placement to avoid pet traffic.

- **Low battery alerts:**

- Replace the CR123A battery as described in the Maintenance section.

- **Poor Z-Wave range:**

- Z-Wave signals can be affected by physical obstructions. Consider adding Z-Wave repeaters or moving the hub closer to the sensor.
- Ensure there are no large metal objects directly between the sensor and the hub.


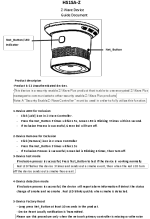
7. SAFETY INFORMATION

- Do not expose the device to extreme temperatures, direct sunlight, or moisture.
- Do not attempt to disassemble or repair the device yourself. Refer to qualified service personnel.
- Keep batteries out of reach of children. Dispose of used batteries according to local regulations.
- This device is intended for indoor use only.

8. WARRANTY AND SUPPORT

For warranty information and technical support, please refer to the documentation provided with your purchase or contact HEIMAN customer service directly. You can typically find contact information on the manufacturer's official website or through your retailer.

Related Documents

	Smart Motion Sensor HS1MS-Z User Manual User manual for the Smart Motion Sensor HS1MS-Z, detailing its features, specifications, installation, and networking instructions.
	HEIMAN HS1SA-Z Z-Wave Smoke Sensor User Guide User guide for the HEIMAN HS1SA-Z Z-Wave Smoke Sensor, detailing setup, operation, association groups, notification reports, battery information, and technical specifications. Learn how to include, exclude, reset, and maintain the device.

