



Manuals.plus /

› SUNVIE /

› SUNVIE Uplighting Indoor Floor Can Light (Model FCL01W02) - Instruction Manual

## SUNVIE FCL01W02

# SUNVIE Uplighting Indoor Floor Can Light (Model FCL01W02) - Instruction Manual

## 1. INTRODUCTION

Thank you for choosing the SUNVIE Uplighting Indoor Floor Can Light. This product is designed to provide stylish and reliable accent lighting for various indoor spaces. Its compact design and warm white LED light create a cozy atmosphere, perfect for highlighting plants, wall art, or architectural features. This manual provides essential information for the safe and efficient use of your new lighting fixture.

## 2. SAFETY INFORMATION

- **Indoor Use Only:** This product is designed exclusively for indoor use. Do not expose to water or high humidity.
- **Electrical Safety:** Ensure the power outlet matches the voltage requirements (120 Volts). Do not overload electrical circuits.
- **Bulb Replacement:** Always disconnect power before replacing the bulb. Use only GU10 bulbs with a maximum compatible wattage of 100 Watts.
- **Placement:** Place the light on a stable, flat surface. Avoid placing it near flammable materials or in areas where it could be easily knocked over.
- **UL Certified Components:** All components, including the light bulb, lamp holder, cable, and switch, are UL certified for safety and durability.

## 3. PACKAGE CONTENTS

Your SUNVIE Uplighting Indoor Floor Can Light package includes:

- 2 × Floor Can Lights
- 2 × 5W Warm White GU10 LED Bulbs

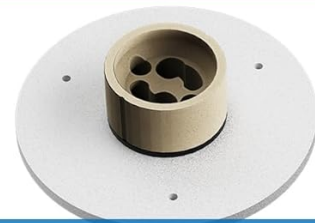
## 4. SETUP

1. **Unpack:** Carefully remove all components from the packaging.
2. **Bulb Installation:** The 5W Warm White GU10 LED bulbs are pre-installed. If replacement is needed, gently twist the bulb counter-clockwise to remove, and clockwise to install a new GU10 bulb.
3. **Placement:** Position the floor can light in your desired indoor location. The 5.9 ft plug cord allows for flexible placement on floors or tabletops.
4. **Connect to Power:** Plug the 2-prong power cord into a standard 120V AC electrical outlet.

## UL LISTED PARTS



UL Listed GU10 Bulb



UL Listed Lampholder



UL Listed Switch



UL Listed 2-Prong Plug

Image: Dimensions and UL listed components of the SUNVIE Uplighting Indoor Floor Can Light.

## 5. OPERATING INSTRUCTIONS

The SUNVIE Uplighting Indoor Floor Can Light features a convenient foot switch for easy operation:

- **Turning On/Off:** Press the foot switch located on the power cord to turn the light on or off. The switch can be operated by foot or hand.
- **Smart Control Compatibility:** For intelligent control, this uplight is compatible with smart sockets or

Wi-Fi outlets (sold separately). Once connected to a smart outlet, you can control the light using your smart home system.



Image: Illustration demonstrating the use of the foot switch for the light.

## 6. FEATURES

- **Reliable & Stylish Design:** White metal construction with an 8" high x 3.5" wide beveled cylindrical shape.
- **UL Certified:** All components are UL certified for safety and durability.
- **GU10 Bulb Included:** Comes with a 5W warm white GU10 LED bulb (2700K, 500 Lumens). The bulb is easily replaceable, supporting any other GU10 bulbs.
- **Convenient Foot Switch:** UL listed switch with a 5.9 ft plug cord for flexible placement and easy on/off control.
- **Smart Home Ready:** Compatible with smart sockets/Wi-Fi outlets for intelligent control.
- **Wide Application:** Ideal for indoor decorative and accent lighting, suitable for illuminating plants, pictures, wall hangings, decorations, small sculptures, and more in living rooms, bedrooms, entertainment rooms, corridors, and entrances.



## Plug-N-Play

Work with Smart Plugs



## GU10 Bulb

Included



## Stylish

Accent Lighting



## 5.9Ft

Cable Length



## Foot Switch

Easy for Use



## UL Listed Parts

Safety and Durable

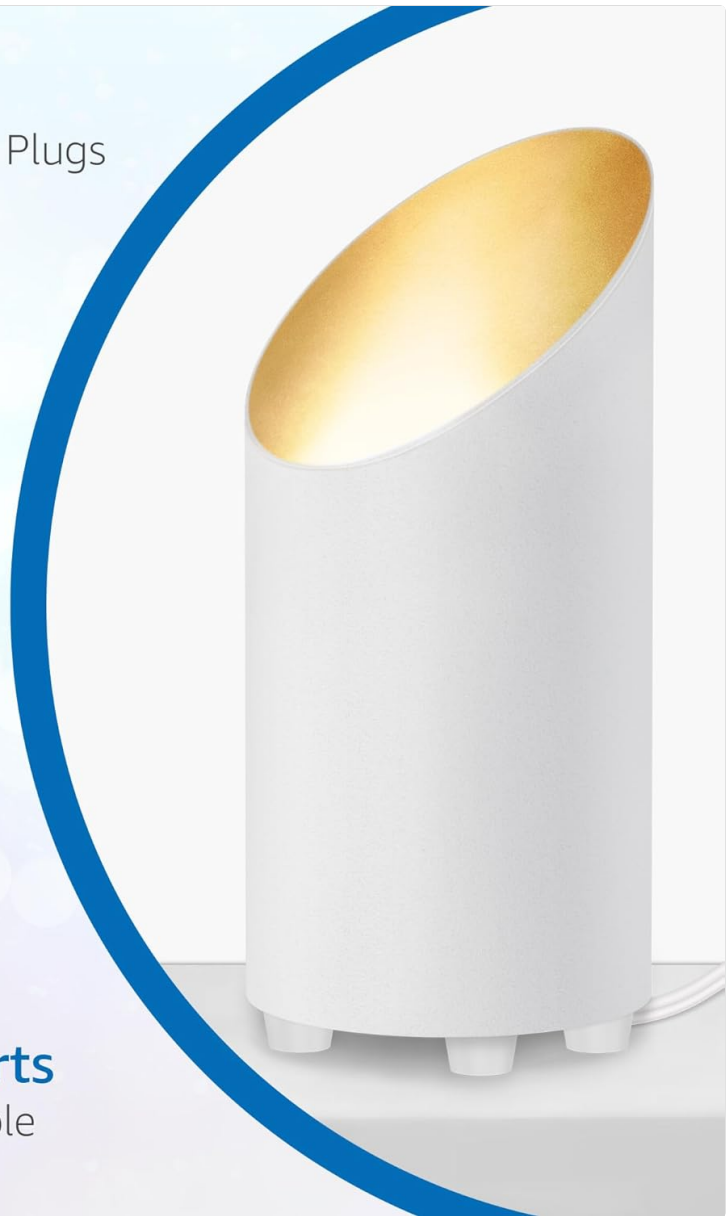


Image: Key features of the SUNVIE Uplighting Indoor Floor Can Light.

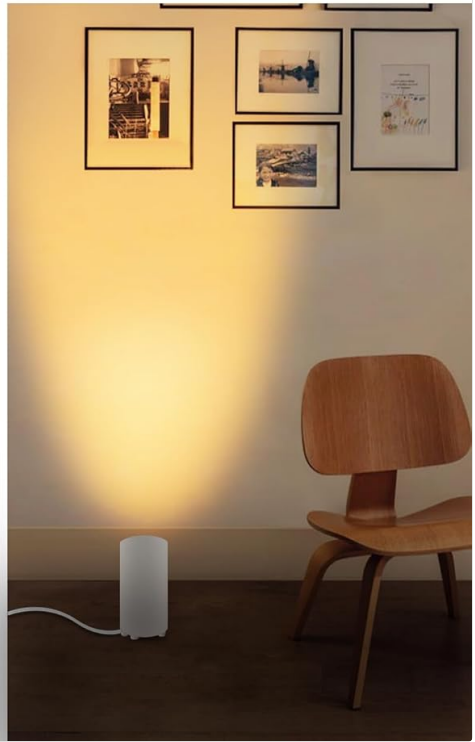


Image: Examples of the light's versatile indoor applications.

## 7. SPECIFICATIONS

---

Attribute	Detail
Brand	SUNVIE
Model Name	Uplighting Indoor Floor Can Light
Part Number	FCL01W02
Color	White
Material	Aluminum, Iron
Product Dimensions	3.5"L x 3.5"W x 8"H
Power Source	AC
Voltage	120 Volts
Light Source Type	LED
Bulb Base	GU10
Wattage	5 Watts (per bulb)
Maximum Compatible Wattage	100 Watts
Brightness	500 Lumens (per bulb)
Color Temperature	2700 Kelvin (Warm White)
Cord Length	5.9 ft
Switch Type	Rocker (Foot Control/Hand Control)
Installation Type	No installation required
Water Resistance Level	Not Water Resistant

# SPECIFICATIONS



(2 Pack 2700k Bulbs Included)



**5W**  
Energy Used



**80**  
CRI



**35 Degree**  
Beam Angle



**500LM**  
Brightness



**50 Watts**  
Incandescent  
Equivalent



**2700K**  
Color  
Temperature

## Different Kinds of GU10 Bulbs Can be Replaced



Image: Detailed specifications of the included GU10 bulb and examples of replaceable GU10 bulbs.

## 8. MAINTENANCE

- **Cleaning:** Disconnect the light from power before cleaning. Use a soft, dry cloth to wipe the exterior. Do not use abrasive cleaners or solvents.
- **Bulb Replacement:** If the bulb needs to be replaced, ensure the light is unplugged and the bulb has cooled down. Twist the old GU10 bulb counter-clockwise to remove it. Insert the new GU10 bulb and twist clockwise until secure.

## 9. TROUBLESHOOTING

- **Light does not turn on:**
  - Check if the power cord is securely plugged into a working electrical outlet.
  - Ensure the foot switch is pressed to the 'ON' position.
  - Verify that the GU10 bulb is correctly installed and not burnt out. Replace if necessary.
- **Light flickers:**

- Check the bulb connection to ensure it is tight.
- If using with a smart dimmer, ensure the bulb is compatible with dimming functions.

## 10. WARRANTY AND SUPPORT

---

SUNVIE offers the following warranty and support for this product:

- **30-Day Money-Back Guarantee:** If you are not satisfied with your purchase, you may return it within 30 days for a full refund.
- **24-Month Limited Manufacturer's Warranty:** This product is covered by a 24-month limited warranty against manufacturing defects.
- **Lifetime After-Sales Support:** SUNVIE provides lifetime after-sales support to assist with any product-related inquiries or issues.

For further assistance, please refer to the contact information provided with your purchase or visit the official SUNVIE website.