

roborock Qrevo Pro

Roborock Qrevo Pro Robot Vacuum and Mop User Manual

Model: Qrevo Pro | Brand: Roborock



1. INTRODUCTION

Welcome to the user manual for your Roborock Qrevo Pro Robot Vacuum and Mop. This advanced cleaning device is designed to provide a comprehensive and hands-free cleaning experience for your home. Featuring FlexiArm Design Edge Mopping, Dynamic Hot Water Mop Washing and Drying, Intelligent Dirt Detection, and powerful 7,000 Pa HyperForce Suction, the Qrevo Pro is ideal for various floor types, including carpets and hard floors. This manual provides essential information on setting up, operating, maintaining, and troubleshooting your robot vacuum to ensure optimal performance and longevity.

2. PRODUCT OVERVIEW

The Roborock Qrevo Pro consists of the robot vacuum unit and a multifunctional docking station. Key features include:

- **7,000 Pa HyperForce Suction:** Ensures deep cleaning on various surfaces, effectively removing dirt, dust, and pet hair.
- **FlexiArm Design Edge Mopping:** Extends the mop into corners for superior edge coverage, reaching areas typically missed by other robots.
- **Dynamic Hot Water Mop Washing:** Heats water to 140°F (60°C) to effectively clean mop pads, removing tough stains and sanitizing.
- **Warm Air Drying:** Dries mop pads thoroughly after cleaning to prevent odors and mildew.
- **Intelligent Dirt Detection:** Monitors mop cleanliness and re-washes or re-mops dirty areas as needed.
- **10mm Mop Lifting:** Automatically lifts mop pads when detecting carpets to prevent wetting and cross-contamination.

- **Reactive Tech Obstacle Avoidance:** Navigates around common household obstacles to ensure uninterrupted cleaning.
- **PreciSense LiDAR Navigation:** Creates detailed and accurate maps for efficient cleaning routes.
- **Multifunctional Dock 2.0:** Provides automatic dust emptying, auto tank refilling, hot water mop washing, and warm air drying.



The Roborock Qrevo Pro robot vacuum and its multifunctional dock, with a smartphone displaying the companion app.



Detailed view of the Multifunctional Dock 2.0, highlighting auto tank refilling, auto dust emptying, hot water mop washing, and warm air drying capabilities.



Illustration of the Intelligent Dirt Detection system, showing the robot re-washing its mop and re-mopping dirty areas for thorough cleaning.

3. SETUP

3.1 Dock Placement

Place the multifunctional dock on a hard and flat floor (wood, tile, concrete, etc.), flat against a wall. Ensure there is at least 0.7 meters (2.3 ft) of clear space in front of the dock and 0.5 meters (1.6 ft) above it for optimal robot

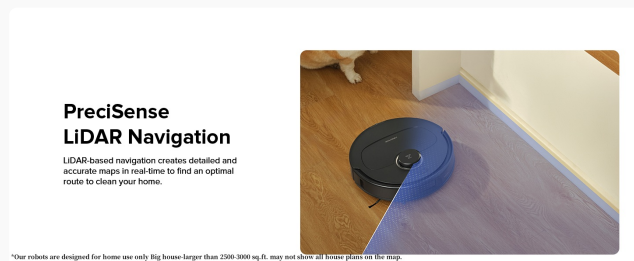
movement and maintenance. Make sure the location has good Wi-Fi signal for seamless app connectivity.

3.2 Initial Charging

Place the robot onto the dock. The robot will automatically align and begin charging. Ensure the charging contacts on both the robot and the dock are clean for proper connection.

3.3 App Connection

1. **Download the Roborock App:** Search for "Roborock" in your mobile app store and download the official application.
2. **Reset Wi-Fi:** Press and hold the power and dock buttons on the robot vacuum simultaneously until you hear the "Resetting Wi-Fi" voice alert. The Wi-Fi indicator light will flash slowly, indicating it's ready for connection.
3. **Add Device:** Open the Roborock App, tap the "Search for device" button, and follow the on-screen instructions to connect your robot. Note that the Roborock robot vacuum only supports 2.4G Wi-Fi. If your router supports both 2.4G and 5G, it is recommended to switch to 2.4G Wi-Fi during the setup process.



Visual guide for downloading the Roborock app, resetting Wi-Fi on the robot, and adding the device within the app.

4. OPERATING THE ROBOROCK QREVO PRO

4.1 Initial Mapping

Before the first cleaning, ensure the robot has a clear path to map your home. Remove any small obstacles, loose cables, or items that could obstruct its navigation. The PreciSense LiDAR Navigation system will quickly create a detailed map of your home.

4.2 Cleaning Modes

The Roborock App allows you to customize cleaning intensity, including suction power, water volume, number of cleaning times, and cleaning path adjustments. You can select various cleaning modes:

- **Vacuum Only:** For dry debris removal.
- **Mop Only:** For wet mopping without vacuuming.
- **Vacuum & Mop:** Simultaneous vacuuming and mopping for comprehensive cleaning.
- **Custom Cleaning Routines:** Schedule cleanings for specific rooms or zones at different times.

Reactive Tech Obstacle Avoidance

Smoothly maneuvers around furniture legs, dodges stray toys, and glides effortlessly from room to room.



The robot vacuum smoothly maneuvers around furniture legs, stray toys, and other obstacles using Reactive Tech Obstacle Avoidance.

4.3 Carpet Care

The 10mm Mop Lifting feature automatically raises the mop pads when the robot detects carpets, preventing moisture transfer and ensuring carpets remain dry. You can also enable customized carpet strategies in the Roborock app, such as "Vacuum Carpet First" or "Deep Carpet Cleaning."

Liftable Mop for Carpet Care

Dual spinning mops clean floors thoroughly, while liftable design keeps carpets dry.

10 mm
Mop Lifting

Dual Spinning
Mops

200 RPM
Spinning Speed



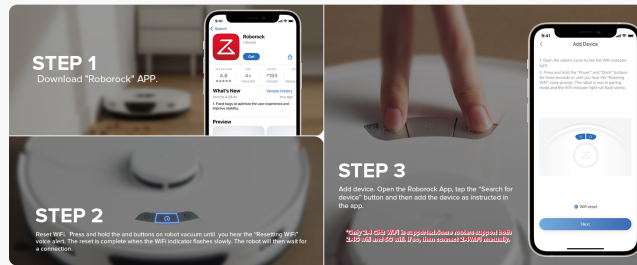
The robot's mop pads automatically lift by 10mm when transitioning onto carpets, protecting them from moisture.

5. MAINTENANCE

Regular maintenance ensures your Roborock Qrevo Pro operates efficiently and extends its lifespan.

5.1 Multifunctional Dock

- **Empty Dust Bag:** The dock's dust bag can hold up to 7 weeks of debris. Replace it when full or as indicated by the app.
- **Clean Water Tank:** Refill the clean water tank with fresh water as needed.
- **Dirty Water Tank:** Empty the dirty water tank regularly to prevent odors and bacterial growth.
- **Clean Dock Tray:** Periodically remove and clean the dock's base tray to remove accumulated dirt and debris from mop washing.



A user removing and cleaning the dock's base tray, demonstrating proper maintenance for the self-cleaning system.

5.2 Robot Vacuum

- **Main Brush & Side Brush:** Regularly inspect and clean the main brush and side brush to remove tangled hair or debris.
- **Mop Pads:** The dual spinning mop pads are automatically washed by the dock. However, it is recommended to occasionally remove and hand-wash them for thorough cleaning.
- **Sensors:** Wipe all sensors (cliff sensors, wall sensors, charging contacts) with a soft, dry cloth to ensure proper navigation and charging.

6. TROUBLESHOOTING

If you encounter issues with your Roborock Qrevo Pro, try the following solutions:

| Problem | Possible Cause | Solution |
|-------------------------------|--|---|
| Robot not charging | Charging contacts are dirty or obstructed. | Clean the charging contacts on both the robot and the dock with a dry cloth. Ensure the robot is properly docked. |
| Robot gets stuck frequently | Loose cables, small objects, or dark surfaces. | Clear the cleaning area of obstacles. Use No-Go Zones in the app for problematic areas. Clean cliff sensors. |
| Poor cleaning performance | Full dustbin, tangled brushes, dirty filters, or low water. | Empty the dustbin. Clean the main brush, side brush, and filter. Refill the water tank. Adjust suction power in the app. |
| Mop pads not getting wet | Water tank empty or clogged water nozzles. | Refill the clean water tank. Check and clean the water nozzles on the robot. |
| Robot cannot connect to Wi-Fi | Incorrect Wi-Fi band (5G), weak signal, or incorrect password. | Ensure you are connecting to a 2.4G Wi-Fi network. Move the dock closer to the router. Re-enter Wi-Fi password carefully. Reset Wi-Fi on the robot. |

7. SPECIFICATIONS

| Feature | Detail |
|---------|--------|
|---------|--------|

| Feature | Detail |
|-----------------------------|--|
| Brand | roborock |
| Model Name | roborock Qrevo Pro |
| Color | Black |
| Product Dimensions | 19.2"L x 13.4"W x 20.5"H |
| Item Weight | 34.4 pounds |
| Suction Power | 7,000 Pa HyperForce |
| Battery Life | 180 minutes |
| Water Tank Capacity (Robot) | 330 Milliliters |
| Control Method | App, Push Button, Voice |
| Compatible Devices | Smartphones, Amazon Echo, Google Home, Smartwatches |
| Navigation Type | PreciSense LiDAR Navigation, Reactive Tech Obstacle Avoidance |
| Mop Type | FlexiArm Design Edge Mopping System, Dual Spinning Mops, 10mm Mop Lifting |
| Dock Features | Auto Mop Drying, Auto Dust Emptying, Auto Tank Refilling, Hot Water Auto Mop Washing, Intelligent Dirt Detection |
| GTIN (UPC) | 00195043004532 |

8. WARRANTY & SUPPORT

For detailed warranty information and customer support, please refer to the official Roborock website or the user manual PDF provided with your product. You can also find the user manual online:

[Download User Manual \(PDF\)](#)

For further assistance, contact Roborock customer service directly through their official channels.