

Diyeeni Diyeeni1zo2fibgvs

Diyeeni XT30 XT60 FPV Drone Smoke Stopper User Manual

Model: Diyeeni1zo2fibgvs

[Overview](#) [Specifications](#) [Introduction](#) [Safety Information](#) [Product](#)
[Setup](#) [Operation](#) [Maintenance](#) [Troubleshooting](#) [Warranty & Support](#)

1. INTRODUCTION

The Diyeeni XT30 XT60 FPV Drone Smoke Stopper is a safety device designed to protect your FPV drone and its components from damage during initial power-on or after modifications. It acts as a resettable fuse, limiting current flow in case of a short circuit, indicated by an LED and an alarm buzzer. This device is compatible with 2-6S RC quadcopters and features both XT30 and XT60 connectors for versatile use.

2. SAFETY INFORMATION

- **Important:** Only one battery can be inserted into either the XT30 or XT60 input jack at a time **Do not connect batteries to both input jacks simultaneously.**
- The product input voltage is 2-6S. Ensure your drone's components can withstand this voltage range.
- Do not attempt to fly or push the throttle with the smoke stopper connected, as it has a maximum output current limit of 1A. This device is for initial power-on testing only.
- Always inspect the smoke stopper for any visible damage before each use.
- Keep the device away from water and extreme temperatures.
- This device is not a substitute for proper wiring and component selection.

3. PRODUCT OVERVIEW

The Diyeeni XT30 XT60 FPV Drone Smoke Stopper is a compact device featuring input and output connectors, an LED indicator, and an alarm buzzer.



XT30 Smoke Stopper

XT30 XT60 Smoke Stopper, every quad drone owner should have one

Smoke stopper can help avoid damage when you power on your 2-6s quad drone for the first time

Figure 3.1: Overall view of the Diyeeni XT30 XT60 FPV Drone Smoke Stopper.

- **XT30/XT60 Input Connectors:** For connecting your drone battery.
- **XT30/XT60 Output Connectors:** For connecting to your drone's power input.
- **LED Indicator:** Provides visual status updates.
- **Alarm Buzzer:** Provides audible alerts for short circuits.



XT30 Smoke Stopper

XT30 XT60 (Input and Output)
Suit for FPV drone with XT30 or XT60 connector

The LED indicator turns solid green in normal situation
The LED indicator turns off and starts beeping in abnormal situation



Figure 3.2: Detail of the XT30 and XT60 input/output connectors.

4. SPECIFICATIONS

Feature	Specification
Item Type	RC Drone Smoke Stopper
Material	ABS, PCB
Input Voltage	2-6S (7-25V)
Hold Current	0.7A
Trip Current	1.2A
Connectors	XT30, XT60 (Input & Output)
Indicator	LED, Alarm Buzzer
Model Number	Diyeeni1zo2fibgvs

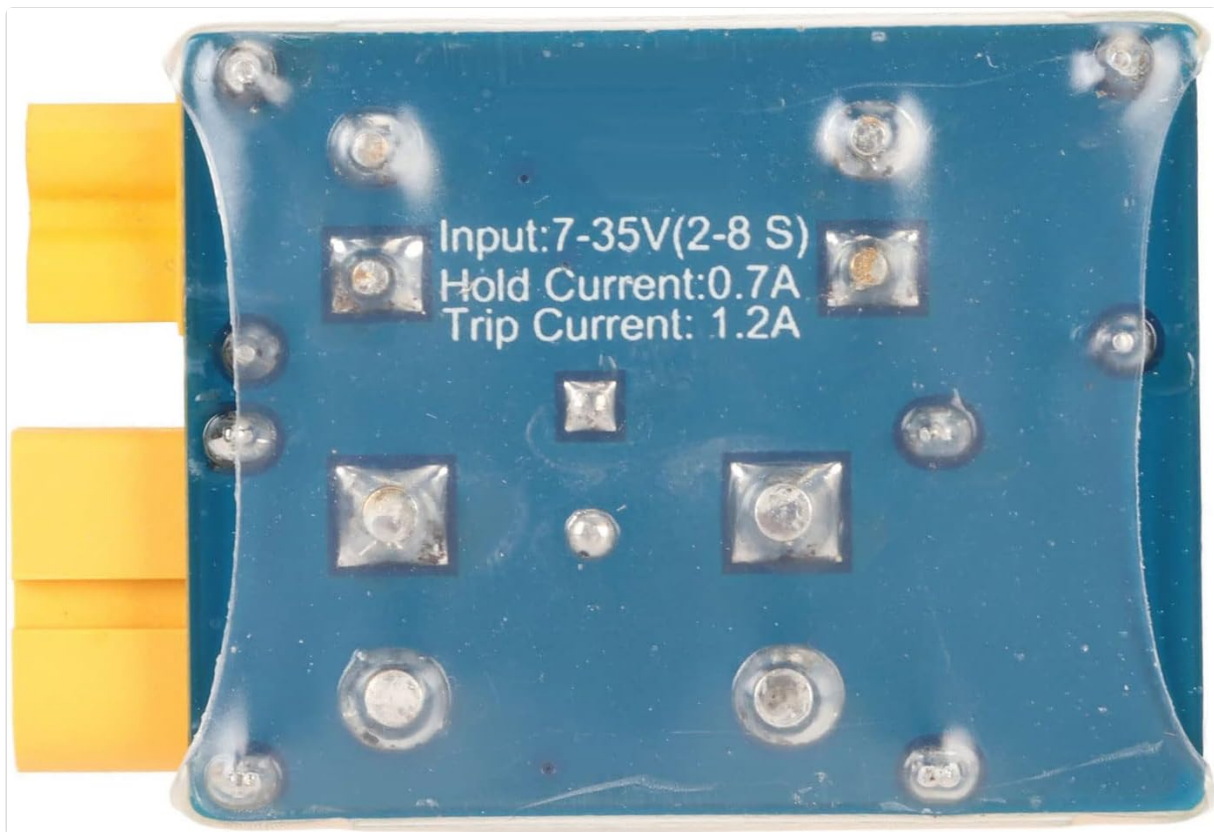


Figure 4.1: Back of the smoke stopper displaying input voltage and current specifications.

5. SETUP

Follow these steps to properly connect the smoke stopper to your FPV drone:

1. **Identify Connectors:** Determine whether your drone battery and drone power input use XT30 or XT60 connectors. The smoke stopper provides both options.
2. **Connect to Drone:** Plug the appropriate output connector (XT30 or XT60) of the smoke stopper into your drone's power input port.
3. **Connect Battery:** Plug your drone battery into the corresponding input connector (XT30 or XT60) on the smoke stopper. **Ensure only one battery is connected at a time.**
4. **Verify Connection:** Double-check all connections to ensure they are secure and correctly oriented.

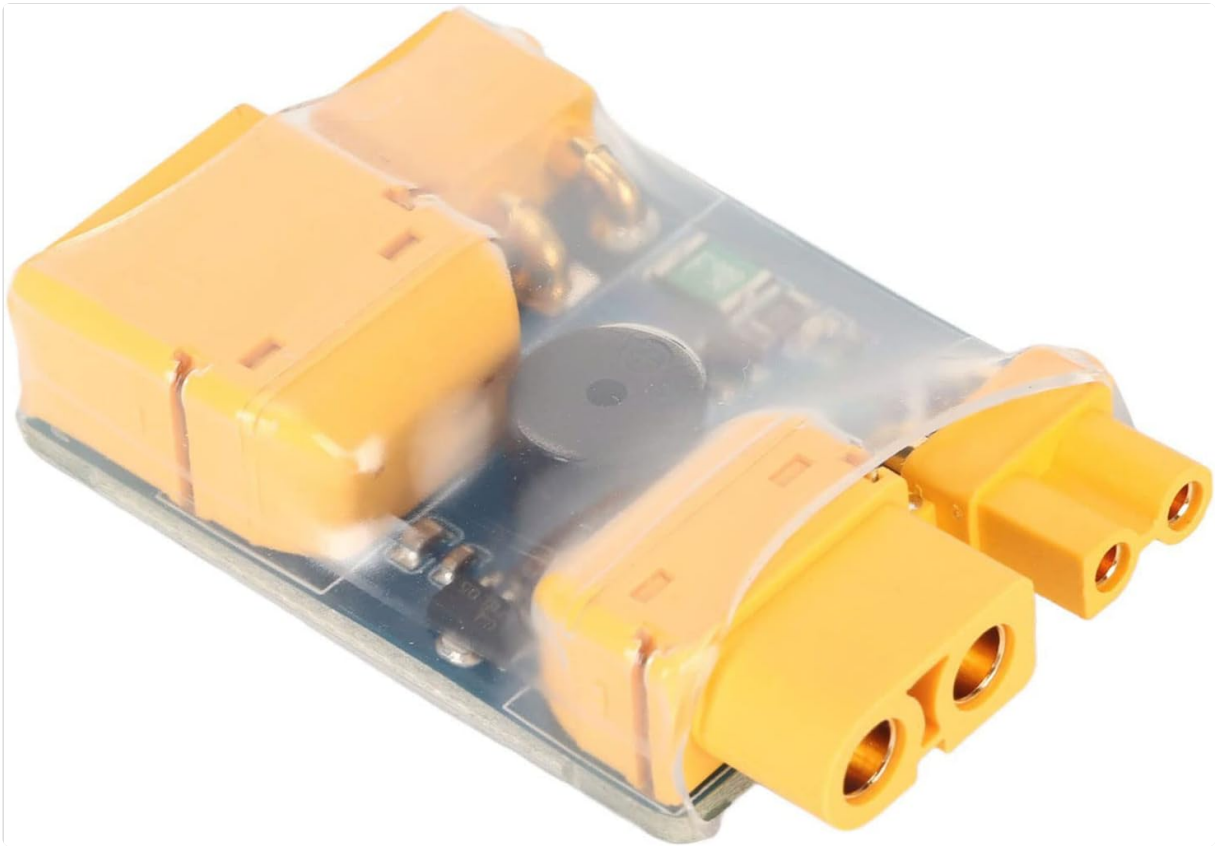


Figure 5.1: The smoke stopper with both XT30 and XT60 connectors visible for connection.

6. OPERATION

Once connected, the smoke stopper will monitor the current flow to your drone.

6.1 LED Indicator and Alarm Buzzer

- **Normal Operation:** When the drone is powered on and no short circuit is detected, the LED indicator will remain **solid green**. This indicates a safe power-on.
- **Short Circuit Detected:** If a short circuit or excessive current draw (above 1.2A trip current) is detected, the LED indicator will turn **off**, and the alarm buzzer will start **beeping**. This alerts you to an issue, preventing potential damage to your drone components.

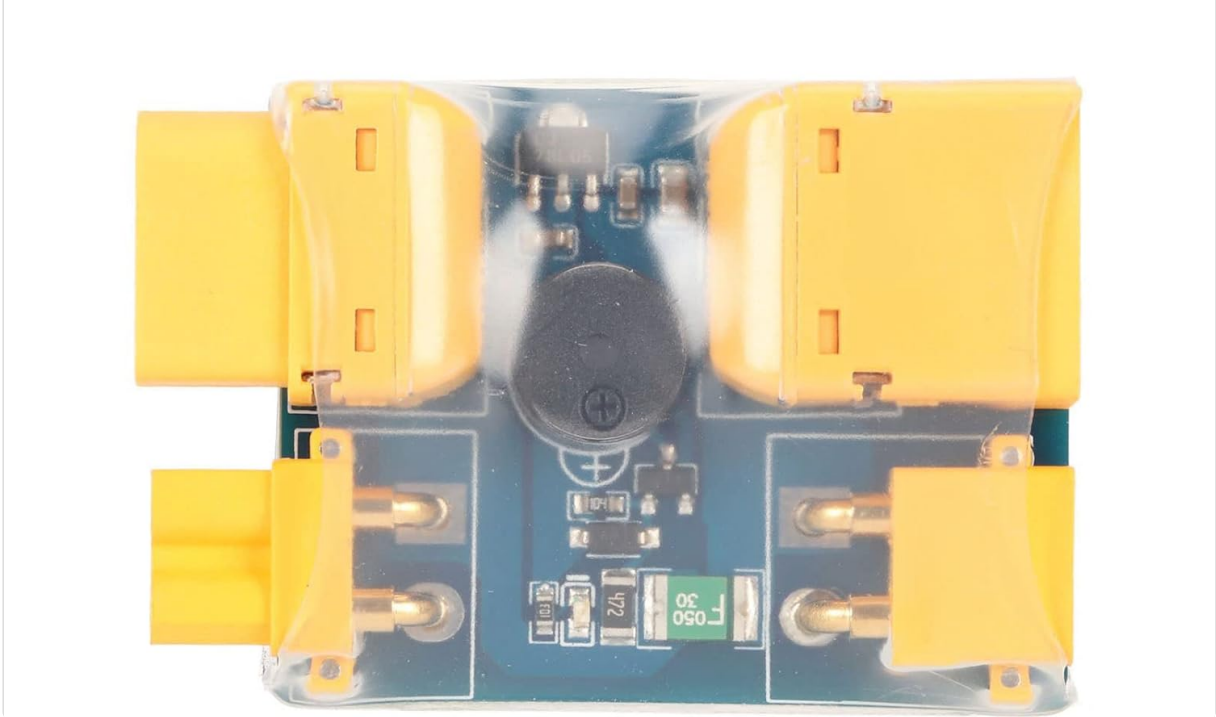


Figure 6.1: Top view highlighting the LED indicator and alarm buzzer.

6.2 Post-Detection

If the smoke stopper detects a short circuit:

1. Immediately disconnect the battery from the smoke stopper.
2. Inspect your drone's wiring and components for any visible shorts, incorrect connections, or damaged parts.
3. Rectify any identified issues before attempting to power on again.
4. Once the issue is resolved, reconnect the smoke stopper and battery to re-test. The smoke stopper will automatically reset once the short circuit condition is removed.

7. MAINTENANCE

- Keep the smoke stopper clean and free from dust and debris.
- Store in a dry place at room temperature.
- Regularly check the connectors for wear or damage. Replace the device if connectors are loose or damaged.
- Do not attempt to open or modify the device, as this will void any potential warranty and may cause malfunction.

8. TROUBLESHOOTING

Problem	Possible Cause	Solution
LED off, Buzzer beeping immediately upon connection.	Short circuit detected in the drone or its components.	Disconnect battery. Inspect drone for shorts (e.g., solder bridges, exposed wires, faulty components). Correct the issue before re-testing.
No LED, no buzzer, no power to drone.	<ul style="list-style-type: none">• Battery not connected or dead.• Smoke stopper damaged.• Poor connection.	<ul style="list-style-type: none">• Ensure battery is charged and properly connected.• Check connections for tightness.• If still no response, the smoke stopper may be faulty.
LED is green, but drone does not power on fully or behaves erratically.	<ul style="list-style-type: none">• Drone requires more current than 1A limit.• Drone component issue not causing a short.	<ul style="list-style-type: none">• The smoke stopper is for initial testing only. Do not attempt to fly or fully operate the drone with it connected.• Disconnect the smoke stopper and connect the battery directly to the drone to confirm full functionality. If issues persist, troubleshoot drone components.

9. WARRANTY AND SUPPORT

For warranty information or technical support, please contact the manufacturer, Diyeeni, through their official channels or the retailer where the product was purchased. Please provide your model number (Diyeeni1zo2fibgvs) and purchase details when seeking support.

Manufacturer: Diyeeni

Model Number: Diyeeni1zo2fibgvs