

## Anykit AN430D8DL3

# Anykit Borescope Inspection Camera AN430D8DL3 User Manual

Comprehensive instructions for setup, operation, and maintenance of your Anykit Industrial Endoscope Camera with 4.3" HD Screen.

## 1. INTRODUCTION

This manual provides detailed instructions for the safe and effective use of your Anykit Borescope Inspection Camera, model AN430D8DL3. This industrial endoscope is designed for visual inspection in hard-to-reach areas such as pipes, engines, and wall interiors. It features a 4.3-inch HD screen, a waterproof probe, and a semi-rigid cable for versatile applications.

**Important Note: This endoscope is for viewing only and does not support taking pictures or videos.**

## 2. SAFETY INFORMATION

- Do not use the device in environments with flammable or explosive gases.
- Keep the device away from strong electromagnetic fields.
- Ensure the device is fully charged before use to avoid interruptions during inspection.
- Do not attempt to disassemble or modify the device. Refer all servicing to qualified personnel.
- The camera probe is waterproof (IP67 rated), but the main display unit is not. Avoid exposing the display unit to water or moisture.
- Avoid bending the semi-rigid cable excessively or sharply, as this may damage internal wiring.
- Store the device in a cool, dry place when not in use.

## 3. PACKAGE CONTENTS

Verify that all items are present in the package:

- Anykit Borescope Inspection Camera (Main Unit with 4.3" HD Screen and integrated 10 ft semi-rigid cable)
- USB Charging Cable
- Accessory Kit (Mirror, Hook, Magnet attachments)



Image: Contents of the Anykit Borescope Inspection Camera package, including the main unit, coiled cable, USB charging cable, accessory attachments, and user manual.

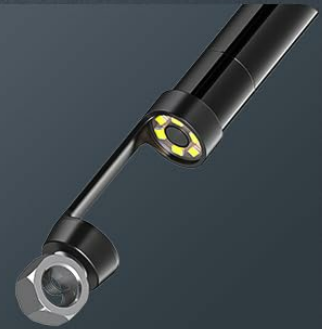
# Fitting assembly



**Mirror**



**Hook**



**Magnet**



Image: Close-up of the accessory attachments: a mirror for side viewing, a hook for retrieving objects, and a magnet for metallic items. These attach to the camera probe tip.

## 4. PRODUCT OVERVIEW

The Anykit Borescope Inspection Camera is a self-contained unit designed for immediate use without external devices or software. It features a high-definition display and a flexible probe with adjustable lighting.



Image: The main Anykit Borescope unit with its 4.3-inch screen displaying an engine component, connected to the coiled semi-rigid inspection cable with its illuminated camera tip.



# 8.0mm New Process Lens & 6 LED Lights

300 thousand ultra-clear pixel lens for clearer imaging



1080P



CMOS  
Imaging



Photos/  
Video



4 brightness  
Levels



Image: An exploded view diagram illustrating the internal components of the 8.0mm camera lens and the arrangement of 6 LED lights for clearer imaging.

# 4.3 INCH HD IPS SCREEN



Anti-scratch



Anti-dust



Vivid colors



 **ANYKIT**

 **OTHERS**

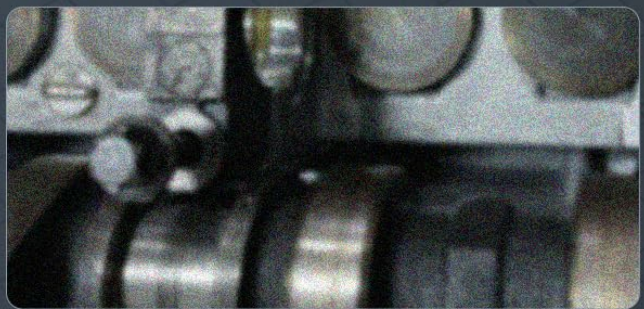
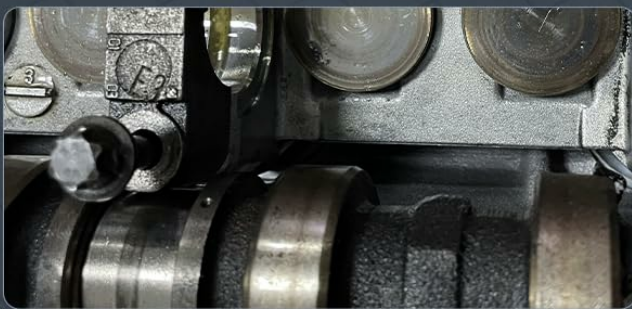
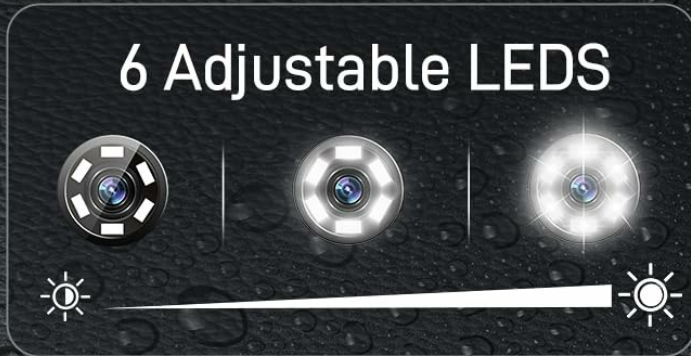


Image: A close-up of the 4.3-inch HD IPS screen, highlighting its anti-scratch, anti-dust, and vivid color display capabilities, with a comparison to a less clear screen.



# 8.0mm Inspection Camera

6 Adjustable LEDs



 IP67

Image: The 8.0mm inspection camera probe, showing its 6 adjustable LED lights and emphasizing its IP67 waterproof rating, suitable for wet environments.

## Key Components:

- **4.3" HD IPS Screen:** Provides clear, real-time inspection views.
- **Camera Probe (0.3" / 8.0mm diameter):** Small enough to access tight spaces.
- **6 Adjustable LED Lights:** Illuminates dark inspection areas with 3 brightness levels.
- **10 ft Semi-Rigid Cable:** Maintains its shape for precise maneuvering.
- **Built-in 2000mAh Rechargeable Battery:** Offers up to 3 hours of continuous operation.

- **IP67 Waterproof Rating:** The camera probe is protected against dust and temporary immersion in water.
- **180° Image Rotation:** Adjust the image orientation on the screen.
- **1.2-3.1" Focal Range:** Optimal viewing distance for clear images.

### Controls and Ports:



Image: Diagram showing the layout of controls and ports on the Anykit Borescope main unit. Labels include Charging Port, Charging Indicator, Reset button, Power Button, Zoom button, and Flips/Normal (image rotation) button.

- **Power Button:** Turns the device on/off.



- **Light Adjustment Button:** Cycles through 3 brightness levels for the camera LEDs.
- **Zoom Button:** Magnifies the image on the screen.
- **Image Rotation Button:** Flips the image 180 degrees.
- **Charging Port:** USB port for charging the internal battery.
- **Charging Indicator:** LED light indicating charging status.
- **Reset Button:** For factory reset if needed.

## 5. SETUP

---

1. **Charge the Device:** Before first use, fully charge the borescope using the provided USB cable and a standard USB power adapter (not included). The charging indicator will show charging status. A full charge typically takes a few hours.
2. **Attach Accessories (Optional):** If needed, carefully attach the mirror, hook, or magnet to the tip of the camera probe. Ensure it is securely fastened.
3. **Power On:** Press and hold the Power Button until the screen illuminates. The device is ready for immediate use.

# TURN ON & GO

This borescope features a user-friendly design that makes it easy for anyone to use enjoy livevideo or photos right out of box



\*This device is just for viewing only. No support for taking photos and videos

Image: A hand holding the Anykit Borescope, demonstrating its compact size and readiness for use. The screen displays a live image from the camera probe.

## 6. OPERATING INSTRUCTIONS

1. **Insert the Probe:** Carefully guide the semi-rigid camera cable into the area you wish to inspect. The cable's flexibility allows it to navigate around obstacles, while its rigidity helps maintain direction.
2. **Adjust Lighting:** Press the Light Adjustment Button to cycle through the three brightness levels of the LED lights on the camera probe. Select the optimal brightness for clear visibility in the inspection area.

3. **View on Screen:** Observe the live feed on the 4.3-inch HD IPS screen.
4. **Rotate Image:** If the image orientation is incorrect, press the Image Rotation Button to flip the view 180 degrees.
5. **Zoom In/Out:** Use the Zoom Button to magnify the image for closer inspection of details.
6. **Maneuver the Probe:** Gently manipulate the cable to navigate the camera to different angles and depths. The 1.2-3.1 inch focal range provides the best clarity within this distance.
7. **Retrieve Objects (with attachments):** If using the hook or magnet, carefully maneuver the probe to engage with the desired object for retrieval.
8. **Power Off:** After inspection, press and hold the Power Button to turn off the device.

### **Application Scenarios:**



# Applicable To various Scenarios



No Need



No Charging



Plug and Play



Image: Three examples of the borescope in use: inspecting an engine compartment, examining an HVAC duct, and checking plumbing under a sink.

- **Automotive:** Inspect engine cylinders, valves, gears, and other internal components.
- **Home Inspection:** Examine pipes, drains, wall cavities, and HVAC ducts for blockages, damage, or pests.
- **Industrial Use:** Inspect machinery, equipment, and structural elements in manufacturing or construction.

## 7. MAINTENANCE

- **Cleaning the Probe:** After each use, especially in dirty or wet environments, gently wipe the camera probe and cable with a soft, damp cloth. Do not use abrasive cleaners or solvents.
- **Cleaning the Display Unit:** Use a dry, soft cloth to clean the display screen and main unit. Avoid spraying liquids directly onto the unit.
- **Storage:** Coil the semi-rigid cable loosely and store the device in its original packaging or a protective case to prevent damage. Keep it in a dry place away from extreme temperatures.
- **Battery Care:** To prolong battery life, charge the device regularly, even if not in frequent use. Avoid completely draining the battery before recharging.

## 8. TROUBLESHOOTING

Problem	Possible Cause	Solution
Device does not power on.	Low battery.	Charge the device fully using the USB cable.
No image on screen.	Camera cable not properly connected (if detachable model, though this is integrated). Internal issue.	Ensure the device is powered on. If problem persists, try resetting the device. If still no image, contact support.
Image is blurry or unclear.	Incorrect focal distance. Insufficient lighting. Dirty camera lens.	Adjust the distance between the camera and the object (optimal 1.2-3.1 inches). Increase LED brightness. Clean the camera lens with a soft cloth.
LED lights are not working.	Lights turned off or set to lowest brightness.	Press the Light Adjustment Button to cycle through brightness levels.
Device freezes or becomes unresponsive.	Software glitch.	Press the Reset button (if available) or power off and restart the device.

## 9. SPECIFICATIONS

Feature	Detail
Model Number	AN430D8DL3
Screen Size	4.3 inches IPS HD
Camera Probe Diameter	0.3 inches (8.0mm)
Cable Length	10 feet (3 meters)
Cable Type	Semi-rigid
Waterproof Rating	IP67 (for camera probe only)
LED Lights	6 adjustable brightness levels


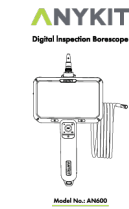

Feature	Detail
Focal Range	1.2 - 3.1 inches (3cm - 8cm)
Battery Capacity	2000mAh Lithium Ion
Operating Time	Up to 3 hours (approx.)
Product Dimensions	6 x 2 x 3 inches (main unit)
Item Weight	12.31 ounces

## 10. WARRANTY AND SUPPORT

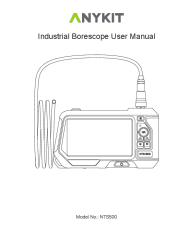
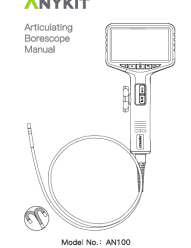
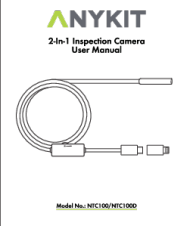
Anykit products are designed for reliability and performance. For warranty information and technical support, please refer to the warranty card included in your product package or visit the official Anykit website. Please have your model number (AN430D8DL3) and purchase date ready when contacting support. For further assistance, you may contact Anykit customer service through their official channels.



### Related Documents - AN430D8DL3

	<p><a href="#">ANYKIT AN150P 360° Articulating Borescope User Manual</a></p> <p>Comprehensive user manual for the ANYKIT AN150P 360° Articulating Borescope, covering features, specifications, setup, operation, maintenance, troubleshooting, and warranty information.</p>
	<p><a href="#">Anykit AN600 Digital Inspection Borescope User Manual and Guide</a></p> <p>Comprehensive guide for the Anykit AN600 Digital Inspection Borescope, covering features, specifications, setup, maintenance, troubleshooting, and warranty. Learn how to use this versatile inspection tool for automotive, plumbing, and other applications.</p>
	<p><a href="#">ANYKIT AN600 Digital Inspection Borescope User Manual</a></p> <p>This user manual provides comprehensive instructions for the ANYKIT AN600 Digital Inspection Borescope, covering its features, setup, operation, maintenance, troubleshooting, and warranty information.</p>



 <p>Model No.: NTS500</p>	<p><a href="#">ANYKIT NTS500 Industrial Borescope User Manual</a></p> <p>Comprehensive user manual for the ANYKIT NTS500 industrial borescope, detailing product features, safety, operation, specifications, and file transfer for professional inspection tasks.</p>
 <p>Model No.: AN100</p>	<p><a href="#">ANYKIT AN100 Articulating Borescope User Manual</a></p> <p>Comprehensive user manual for the ANYKIT AN100 Articulating Borescope, detailing its features, operation, specifications, and troubleshooting for professional and industrial inspection tasks.</p>
 <p>Model No.: NTC100/NTC100D</p>	<p><a href="#">ANYKIT NTC100/NTC100D 2-In-1 Inspection Camera User Manual</a></p> <p>User manual for the ANYKIT NTC100 and NTC100D 2-In-1 Inspection Camera, covering product specifications, operating instructions, app usage, safety guidelines, troubleshooting, and warranty information.</p>