

## Baseus EZ10

# Baseus Bowie EZ10 Wireless Bluetooth Earbuds User Manual

## INTRODUCTION

---

Welcome to the user manual for your Baseus Bowie EZ10 Wireless Bluetooth Earbuds. This guide provides detailed instructions on how to set up, operate, and maintain your earbuds to ensure optimal performance and a seamless audio experience. Please read this manual carefully before using your device.

## PRODUCT OVERVIEW

---

### Package Contents



Image: The package contents for the Baseus Bowie EZ10, including the two earbuds, the charging case, a USB charging cable, and multiple pairs of silicone ear tips in various sizes.

- Baseus Bowie EZ10 Wireless Earbuds (Left and Right)
- Charging Case
- USB Charging Cable
- Multiple Pairs of Ear Tips (various sizes)
- User Manual (this document)

## Key Features

- **Adaptive Noise Cancellation (ANC) up to -42dB:** Experience high-quality, immersive audio regardless of your environment.
- **ENC Noise Cancellation with 4 Microphones:** Ensures clear and high-quality calls even in noisy surroundings.
- **Ultra-Low Latency (0.038s):** Guarantees audio and video synchronization for an immersive experience, especially for gaming and video playback.
- **Extended Battery Life:** Up to 30 hours of total playback with the charging case, and 5 hours on a single charge.
- **Simultaneous Device Connection:** Connect to two devices at the same time for seamless switching.
- **Customizable App Support:** Personalize your audio experience and controls via the dedicated Baseus application.

## Product Diagram



Image: A clear view of the Baseus Bowie EZ10 wireless earbuds and their sleek black charging case, showcasing their compact design.

The Baseus Bowie EZ10 earbuds feature a compact in-ear design for a comfortable and secure fit. The charging case is designed for easy portability and secure storage, with magnetic slots to hold the earbuds in place.

## SETUP

---

### Charging the Earbuds and Case

## Divirta-se ouvindo o dia todo e a noite

Até 25 horas de audição com o estojo de carregamento e 2 horas com apenas 10 minutos de carregamento, graças ao BRC.



Carga  
Rápida BRC Baseus



Image: A graphic illustrating the long battery life of the Baseus Bowie EZ10 earbuds, indicating extended listening time with the charging case and quick charging capabilities.

1. **Initial Charge:** Before first use, fully charge both the earbuds and the charging case. Place the earbuds into the charging case.
2. **Connect Charger:** Connect the USB charging cable to the charging port on the case and plug the other end into a compatible USB power source (e.g., wall adapter, computer USB port).
3. **Charging Indicators:** The LED indicators on the charging case will show the charging status. Refer to the specific light patterns in your quick start guide for detailed information.
4. **Fast Charging:** The earbuds support fast charging, providing significant playback time with a short charge.

### Pairing with Your Device

**Baseus**

## Wireless 5.3

Fast and smooth connection  
with improved stability.



Image: A visual representation of Bluetooth 5.3 technology, highlighting its role in providing a fast and stable wireless connection for the Baseus Bowie EZ10 earbuds.

1. **Power On:** Open the charging case. The earbuds will automatically power on and enter pairing mode.
2. **Activate Bluetooth:** On your device (smartphone, tablet, computer), enable Bluetooth.
3. **Search for Devices:** In your device's Bluetooth settings, search for available devices.
4. **Select 'Baseus Bowie EZ10':** From the list of found devices, select 'Baseus Bowie EZ10' to connect.
5. **Confirmation:** Once connected, you will hear an audio prompt from the earbuds, and the device's Bluetooth settings will show them as connected.
6. **Multi-Device Connection:** The earbuds can connect to two devices simultaneously. After pairing with the first device, disable Bluetooth on it, then pair with the second device. Re-enable Bluetooth on the first device, and the earbuds should connect to both.

## OPERATING INSTRUCTIONS

### Wearing the Earbuds



**baseus**

## Crafted for Snug Fit

Mini in-ear design for comfortable wear, fit for any ears.

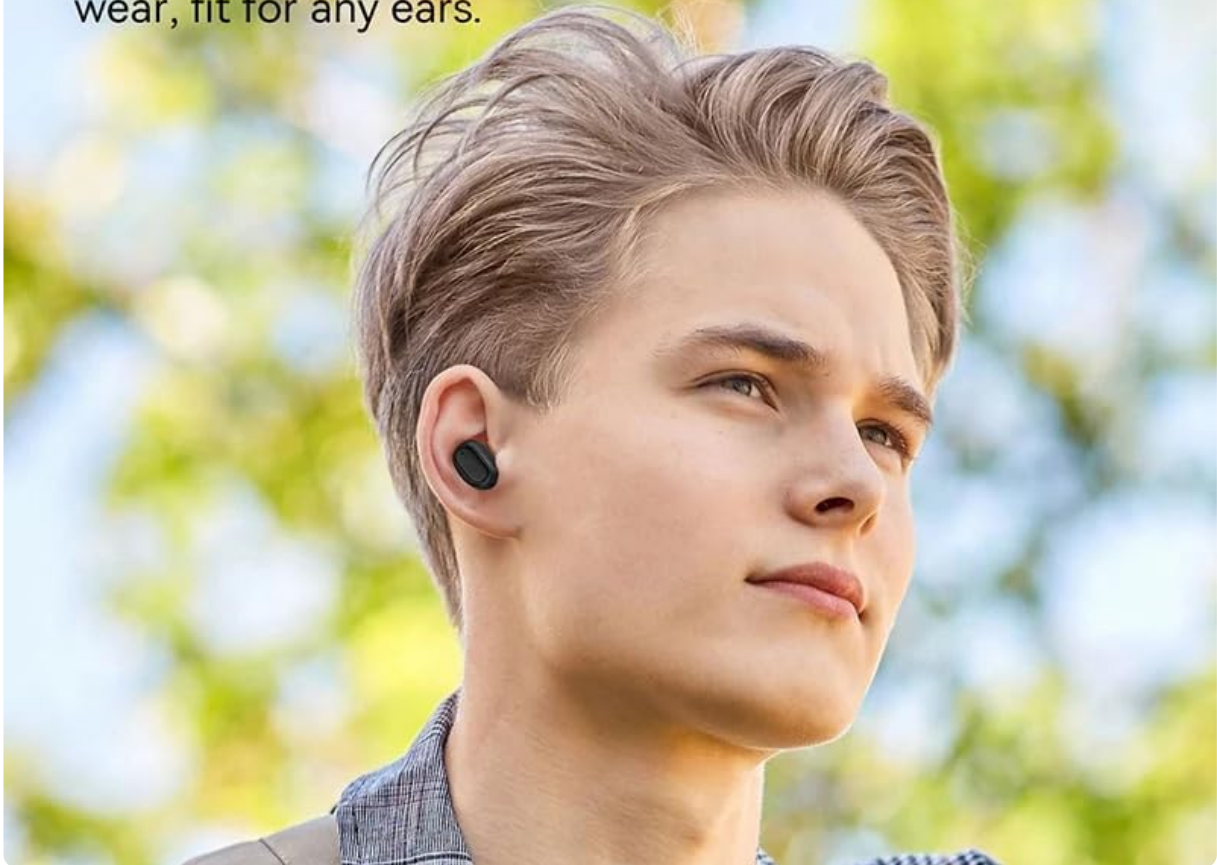


Image: A person wearing a Baseus Bowie EZ10 earbud, illustrating the comfortable and snug fit of the mini in-ear design.

1. **Choose Right Ear Tips:** Select the ear tips that provide the best seal and comfort for your ears.
2. **Insert Earbuds:** Gently insert each earbud into your ear canal.
3. **Adjust for Fit:** Rotate the earbuds slightly until they feel secure and comfortable, ensuring a good seal for optimal sound quality and noise cancellation.

### Touch Controls

The Baseus Bowie EZ10 earbuds feature intuitive touch controls on each earbud. Specific functions may vary or be customizable via the Baseus app.

- **Play/Pause:** Single tap on either earbud.
- **Next Track:** Double tap on the right earbud.
- **Previous Track:** Double tap on the left earbud.
- **Answer/End Call:** Single tap on either earbud.
- **Reject Call:** Press and hold on either earbud.
- **Activate Voice Assistant:** Triple tap on either earbud.
- **Volume Control:** Specific gestures for volume control can often be set up in the Baseus app.

### Noise Cancellation (ANC/ENC)

The Baseus Bowie EZ10 earbuds offer advanced noise cancellation features:

- **Adaptive Noise Cancellation (ANC):** Reduces ambient noise for an immersive listening experience. This mode can often be toggled on/off or adjusted via the touch controls or the Baseus app.
- **ENC Noise Cancellation for Calls:** The 4-microphone ENC system automatically works during calls to ensure your voice is clear and background noise is minimized for the person on the other end.

## Low Latency Mode



Image: The Baseus Bowie EZ10 earbuds and charging case positioned next to a smartphone displaying a gaming scene, emphasizing the ultra-low latency feature for synchronized audio and video.

For gaming or watching videos, activate the ultra-low latency mode to ensure perfect synchronization between audio and video. This mode can typically be activated via a specific touch gesture or through the Baseus app.

## Using the Baseus App

Download the official Baseus app from your device's app store. The app allows you to:

- Customize touch controls.
- Adjust EQ settings.
- Toggle noise cancellation modes.

- Check battery levels.
- Update firmware.

## MAINTENANCE

### Cleaning

- **Earbuds:** Use a soft, dry, lint-free cloth to wipe the earbuds. For earwax or debris, gently clean with a small, soft brush or cotton swab. Do not use liquids or abrasive cleaners.
- **Ear Tips:** Remove the silicone ear tips and wash them with mild soap and water. Rinse thoroughly and allow them to dry completely before reattaching.
- **Charging Case:** Wipe the case with a soft, dry cloth. Ensure the charging contacts inside the case are clean and free of debris.

### Storage

- Always store the earbuds in their charging case when not in use to protect them and keep them charged.
- Store the device in a cool, dry place, away from extreme temperatures and direct sunlight.

## TROUBLESHOOTING

Problem	Possible Cause	Solution
Earbuds not pairing	Earbuds not in pairing mode; Bluetooth off on device; previously paired device interfering.	Ensure earbuds are in pairing mode (open case); turn on Bluetooth on your device; forget previous connections on your device and try again.
No sound from one earbud	Low battery; earbud not properly connected; earbud dirty.	Place both earbuds in the case to charge; ensure they are properly seated; clean earbud and charging contacts.
Charging issues	Cable or adapter faulty; charging contacts dirty; case battery empty.	Try a different USB cable and power adapter; clean charging contacts on earbuds and case; ensure charging case is charged.
Poor sound quality	Improper fit; ear tips dirty; interference.	Adjust earbud fit and try different ear tips; clean ear tips and earbuds; move closer to your device or away from sources of interference.

## SPECIFICATIONS

Feature	Detail
Model Name	Bowie EZ10
Connectivity Technology	Wireless (Bluetooth 5.3)





Feature	Detail
Ear Placement	In-Ear
Noise Control	Adaptive Noise Cancellation, ENC for calls
Latency	0.038s (Ultra-Low Latency Mode)
Battery Life (Earbuds)	Up to 5 hours (single charge)
Battery Life (with Case)	Up to 30 hours
Control Type	Media Control, Volume Control (customizable)
Material	Plastic, Silicone/Memory Foam (ear tips)
Color	Black
Manufacturer	Baseus_Inc
Certification	CE





### WARRANTY AND SUPPORT

The Baseus Bowie EZ10 Wireless Bluetooth Earbuds come with a manufacturer's warranty. Please refer to the warranty card included in your package or visit the official Baseus website for detailed warranty terms and conditions.

For technical support, troubleshooting assistance, or any product-related inquiries, please contact Baseus customer service through their official website or the contact information provided in your product packaging.

### Related Documents - EZ10

	<a href="#">Baseus Bowie H1i Noise-Cancellation Wireless Headphones User Manual</a> Comprehensive user manual for Baseus Bowie H1i noise-cancellation wireless headphones, covering setup, operation, features, and safety guidelines.
	<a href="#">Baseus Bowie H1 Pro Noise-Cancellation Wireless Headphones User Manual</a> Comprehensive user manual for the Baseus Bowie H1 Pro Noise-Cancellation Wireless Headphones, detailing pairing, operation instructions, specifications, warnings, and app integration for an optimal audio experience.

	<p><a href="#">Baseus Bowie H1i Noise-Cancellation Wireless Headphones User Manual</a></p> <p>Comprehensive user manual for the Baseus Bowie H1i Noise-Cancellation Wireless Headphones, covering setup, features, troubleshooting, and specifications.</p>
	<p><a href="#">Baseus Bowie MA10 Wireless Earbuds Quick Start Guide</a></p> <p>A concise guide to using the Baseus Bowie MA10 wireless earbuds, covering wearing, powering on/off, charging, LED indicators, pairing, button controls, resetting, and support.</p>
	<p><a href="#">Baseus Bowie EZ10 True Wireless Earphones User Manual</a></p> <p>Comprehensive user manual for the Baseus Bowie EZ10 True Wireless Earphones, covering pairing, usage instructions, specifications, and safety warnings.</p>
	<p><a href="#">Baseus Bowie H1i Noise-Cancellation Wireless Headphones User Manual</a></p> <p>Comprehensive user manual for the Baseus Bowie H1i Noise-Cancellation Wireless Headphones, covering setup, operation, features, specifications, and safety guidelines.</p>