

SelfieShow M01

SelfieShow M01 3-Axis Gimbal Stabilizer for Smartphones User Manual

Model: M01

1. INTRODUCTION

This manual provides detailed instructions for the operation and maintenance of your SelfieShow M01 3-Axis Gimbal Stabilizer. Please read this manual thoroughly before use to ensure proper functionality and to maximize your experience with the device. This gimbal is designed to provide stable and smooth video recording for smartphones, featuring intelligent tracking, gesture control, and various shooting modes.

2. PACKAGE CONTENTS

Verify that all items are present in your package:

- SelfieShow M01 3-Axis Intelligent Gimbal
- USB Type-C Charging Cable
- Mini Tripod
- User Manual (this document)



Figure 2.1: SelfieShow M01 Gimbal Stabilizer with included tripod and various views of the device.

3. PRODUCT OVERVIEW

Familiarize yourself with the components of your SelfieShow M01 Gimbal Stabilizer.

- **Smartphone Clamp:** Securely holds your smartphone.
- **Roll Axis Motor:** Controls the roll movement of the smartphone.

- **Tilt Axis Motor:** Controls the tilt movement of the smartphone.
- **Pan Axis Motor:** Controls the pan movement of the smartphone.
- **Control Panel:** Contains buttons for power, mode switching, joystick, and zoom slider.
- **Fill Light:** Adjustable LED light for improved illumination.
- **Handle:** Ergonomic grip for comfortable holding.
- **1/4-inch Thread:** Located at the bottom for tripod mounting.
- **USB Type-C Port:** For charging the gimbal.



Figure 3.1: Illustration of the gimbal's multi-angle rotation capabilities, showing 330° roll, 330° tilt, and 320° pan.

4. SETUP

4.1 Charging the Gimbal

1. Connect the provided USB Type-C cable to the charging port on the gimbal.
2. Connect the other end of the cable to a USB power adapter (not included).
3. The indicator lights will show the charging status. A full charge typically takes approximately 3 hours.

Lasting Power & Type-C Charging

Stability in your palm, easily capturing every moment

3h	8h
Charging Time	Working Time



Figure 4.1: The gimbal's Type-C charging port and battery capacity (3600mAh), indicating 3 hours charging time for 8 hours working time.

4.2 Mounting the Smartphone

1. Unfold the gimbal to its operational position.
2. Gently pull apart the smartphone clamp.
3. Insert your smartphone into the clamp, ensuring it is centered and secure. The phone clip width supports devices between 5.5cm and 9cm.
4. Ensure the phone's camera is not obstructed.



Figure 4.2: The gimbal's universal compatibility with smartphones, showing the adjustable phone clip width from 5.5cm to 9cm.

4.3 Balancing the Gimbal

For optimal performance, ensure your smartphone is balanced on the gimbal. While the 3-axis stabilization compensates for minor imbalances, proper balancing reduces motor strain and extends battery life.

1. After mounting your phone, power off the gimbal.
2. Adjust the phone's position within the clamp until it remains level when released.
3. If your phone is too heavy on one side, slightly shift it in the clamp until it balances horizontally.

4.4 App Installation and Connection

To unlock the full features of your gimbal, download the "Gimbal Show" application.

1. Scan the QR code in the quick start guide or search for "Gimbal Show" in your smartphone's app store (iOS App Store or Google Play Store).
2. Install the application.
3. Ensure Bluetooth is enabled on your smartphone.
4. Power on the gimbal.
5. Open the "Gimbal Show" app and follow the on-screen instructions to connect to your gimbal via Bluetooth.

“Gimbal Show” APP

Comprehensive functionality for all your needs



Figure 4.3: The "Gimbal Show" application interface, showcasing comprehensive functionality and various shooting modes.

5. OPERATING INSTRUCTIONS

5.1 Power On/Off

- **Power On:** Press and hold the power button for a few seconds until the indicator lights illuminate.
- **Power Off:** Press and hold the power button for a few seconds until the indicator lights turn off.

5.2 Gimbal Modes

The gimbal offers several operational modes to suit different shooting scenarios. Use the mode switch button on the control panel to cycle through them.

- **Follow Mode:** The gimbal follows your pan and tilt movements, keeping the horizon level.
- **Tilt Lock Mode:** The tilt axis is locked, while the pan axis follows your movement.
- **FPV (First Person View) Mode:** All three axes follow your movement, providing a dynamic, immersive perspective.
- **Spin Shot Mode:** Allows for creative 360-degree barrel rolls.



Figure 5.1: The gimbal providing unparalleled 3-axis stabilization, capturing a skateboarder in motion smoothly.

3-Axis Stabilization

Discover a world of steady, shake-free shots that capture every moment with impeccable clarity and precision.



Figure 5.2: Visual demonstration of 3-axis stabilization, showing a clear difference between shaky and stable footage of a cyclist.

5.3 Smart Tracking

The gimbal features an innovative AI tracker for automatic subject tracking. This function is accessible through the "Gimbal Show" app.

- **Face Tracking:** The gimbal automatically identifies and follows a human face, keeping it centered in the frame.
- **Body Tracking:** Tracks the entire body, useful for dynamic movements or when the face is partially obscured.
- **Object Tracking:** Select any object on your screen, and the gimbal will track its movement.

AI Smart Tracking



Figure 5.3: AI Smart Tracking in action, demonstrating face, body, object, and other app tracking capabilities with a girl playing guitar.

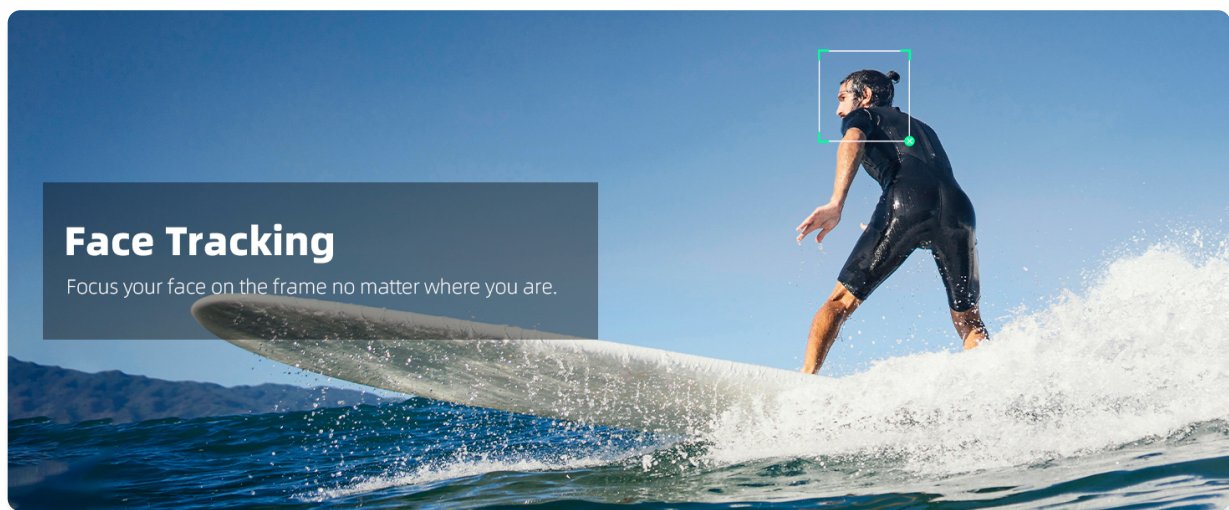


Figure 5.4: Face Tracking feature, keeping the subject's face in focus even during dynamic activities like surfing.

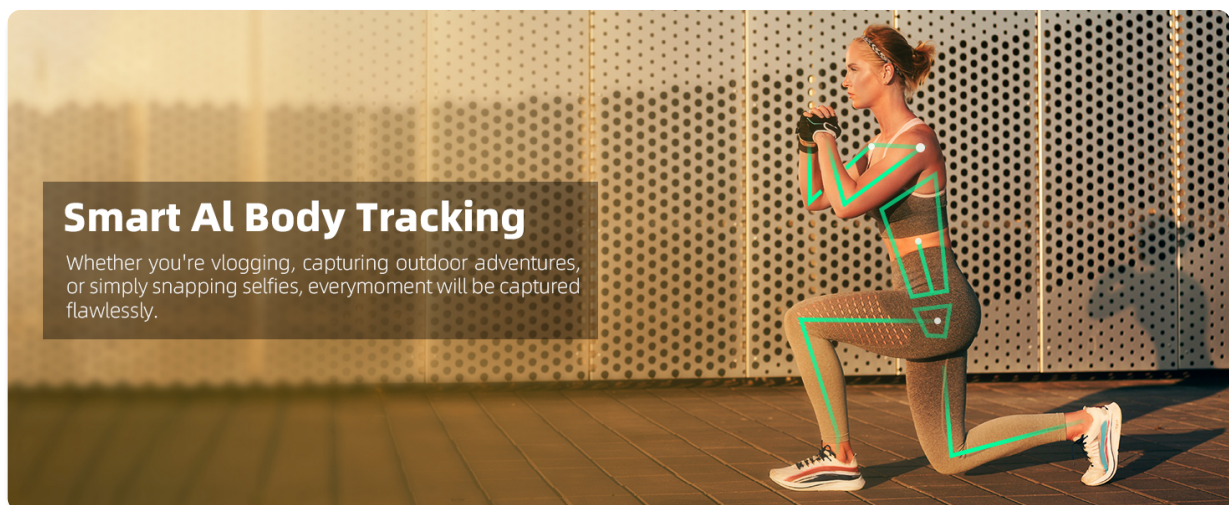


Figure 5.5: Smart AI Body Tracking, capturing a woman's full body movements during exercise.

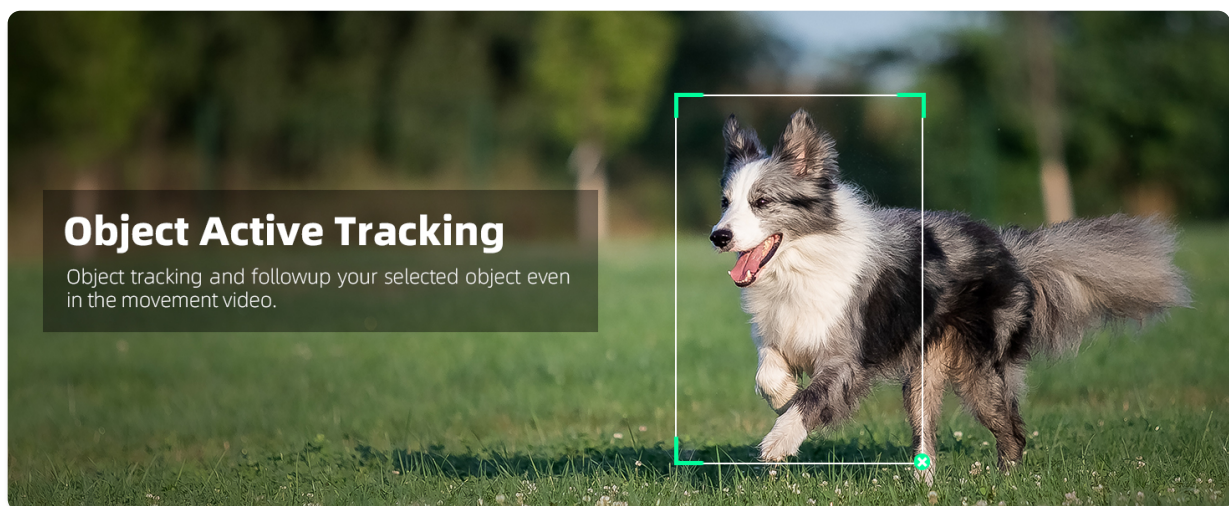


Figure 5.6: Object Active Tracking, demonstrating the gimbal's ability to follow a selected object, such as a dog, in motion.

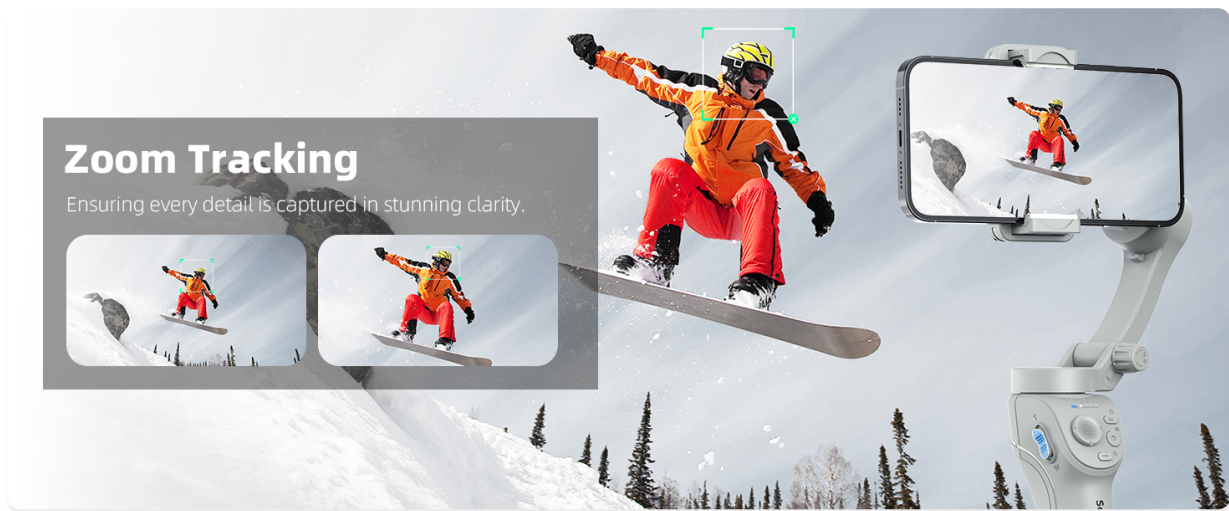


Figure 5.7: Zoom Tracking feature, ensuring details are captured clearly by automatically adjusting zoom on the tracked subject.

5.4 Gesture Control

Control your gimbal hands-free using specific gestures recognized by the "Gimbal Show" app.

- **OK Gesture:** Start or stop face tracking.
- **Thumbs Up Gesture:** Switch between portrait and landscape orientation.
- **Scissors Gesture:** Initiates a 3-second countdown before shooting.
- **Palm Gesture:** Switch between video and photo shooting modes.

Smart Gesture Control

Enjoy hands-free shotting with Smart Gesture Control



Figure 5.8: Smart Gesture Control, allowing users to operate the gimbal hands-free.

Gesture Control



OK Gesture
start/stop face tracking



Thumbs Up Gesture
Switch between portrait and landscape
OK Gesture start/stop face tracking



Scissors Gesture
Countdown 3seconds to shooting



Palm Gesture
Switch between video and photo shooting

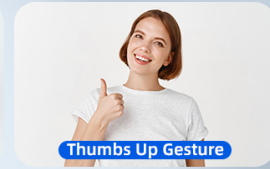


Figure 5.9: Detailed guide to Gesture Control, showing specific hand signals for different functions.

5.5 Using the Fill Light

The built-in fill light provides additional illumination for low-light conditions.

- Press the fill light button to turn it on.
- Press the button repeatedly to cycle through 9 levels of brightness adjustment.
- Press and hold the button to turn it off.

Built-in Fill Light

Built-in three-level adjustable fill light, say goodbye to dark and blurry videos.

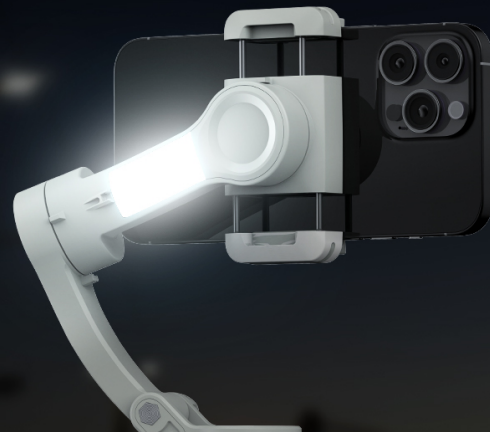


Figure 5.10: The built-in fill light feature, demonstrating its effectiveness in improving video quality in dark environments.

5.6 Shooting Functions (via Gimbal Show App)

The "Gimbal Show" app offers a variety of creative shooting modes:

- **Panorama:** Capture wide-angle panoramic shots.
- **Timelapse:** Record time-lapse videos.
- **Motion Timelapse:** Add movement to your time-lapse videos.
- **Dolly Zoom (Hitchcock Effect):** Create a dramatic visual effect where the background appears to zoom while the foreground remains constant.
- **Inception Mode:** Rotate your phone without limits for stunning, dynamic video effects.
- **Clone Me:** Create multiple instances of yourself in a single shot.
- **Pro Mode:** Access advanced camera settings for manual control.
- **Beauty Filters:** Enhance your appearance in photos and videos.

Panorama



Figure 5.11: Panorama mode, capturing a wide scenic view with the gimbal.

Dolly Zoom



Figure 5.12: Dolly Zoom effect, creating a dramatic visual by altering perspective while keeping the subject size constant.

Clone Me



Figure 5.13: Clone Me feature, allowing for creative compositions with multiple instances of a subject.



Figure 5.14: Timelapse mode, capturing the movement of city lights over time.

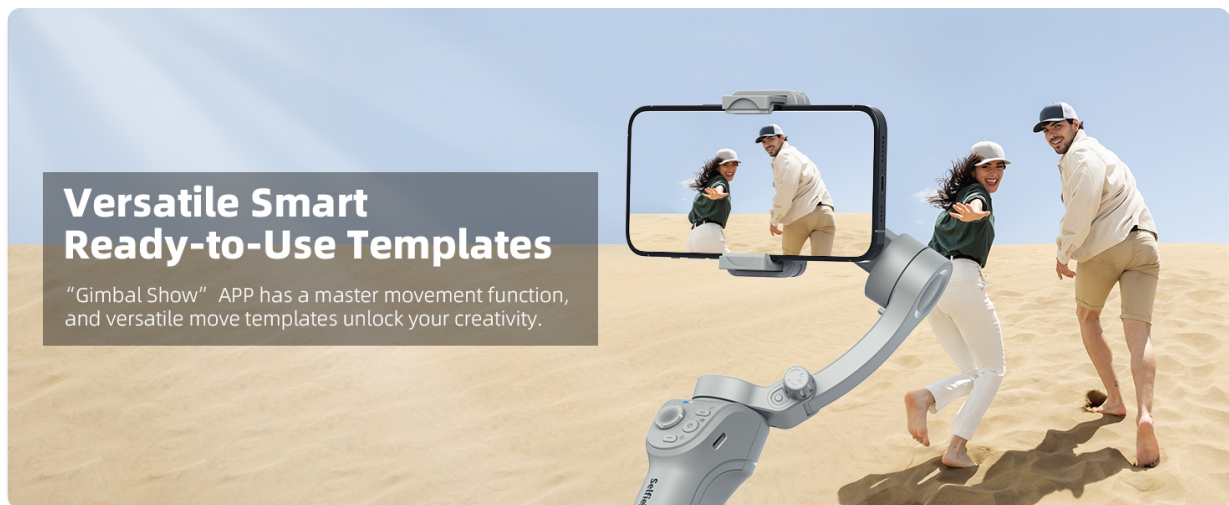


Figure 5.15: Versatile Smart Ready-to-Use Templates within the "Gimbal Show" app, simplifying creative video production.

5.7 Quick Launch

The gimbal is designed for quick deployment.

1. Unfold the gimbal from its compact state.
2. Mount your smartphone.
3. Power on the device. The gimbal will automatically initialize and be ready for use.



Figure 5.16: Quick Launch process, illustrating how to rapidly set up the gimbal for use.

Portable & Foldable

Stability in your palm, easily capturing every moment



Product Weight: 378g

Fold Length: 16.3cm

Figure 5.17: The gimbal's portable and foldable design, showing it can be easily carried in a pocket.

Foldable & Portable



Figure 5.18: The compact and foldable design of the gimbal, emphasizing its ease of transport.

With Tripod



Figure 5.19: The gimbal used with its included tripod, demonstrating stable hands-free operation.

6. MAINTENANCE

- **Cleaning:** Use a soft, dry cloth to clean the gimbal. Do not use liquid cleaners or solvents.
- **Storage:** Store the gimbal in a cool, dry place, away from direct sunlight and extreme temperatures. Ensure it is folded into its compact state for protection.
- **Battery Care:** For long-term storage, charge the battery to approximately 50-60% every three months to maintain battery health.

7. TROUBLESHOOTING

Problem	Possible Cause	Solution
Gimbal does not power on.	Low battery.	Charge the gimbal fully.
Gimbal shakes or vibrates uncontrollably.	Smartphone not balanced correctly; Gimbal not initialized properly.	Re-balance the smartphone; Power off and restart the gimbal. Ensure the phone is securely mounted.

Problem	Possible Cause	Solution
Cannot connect to the "Gimbal Show" app.	Bluetooth is off; App permissions denied; Gimbal not in pairing mode.	Ensure Bluetooth is enabled on your phone. Grant necessary app permissions. Restart both the gimbal and the app.
Tracking feature is not working.	Poor lighting conditions; Subject too far or too close; App not recognizing gestures.	Ensure adequate lighting. Maintain an appropriate distance from the subject. Verify app permissions for camera access. Ensure gestures are performed clearly.
Short battery life.	Frequent use of fill light; Extreme temperatures; Battery degradation over time.	Reduce fill light usage. Operate in moderate temperatures. Ensure full charge before use.

8. SPECIFICATIONS

- **Model:** M01
- **Product Dimensions (Folded):** 16.3 x 11.9 x 5 cm (6.42 x 4.68 x 1.97 inches)
- **Item Weight:** 378g (13.3 ounces)
- **Battery Capacity:** 3600mAh Lithium Polymer
- **Charging Time:** Approximately 3 hours
- **Working Time:** Up to 8 hours
- **Compatible Phone Width:** 5.5 - 9 cm
- **Stabilization:** 3-Axis
- **Connectivity:** Bluetooth
- **Charging Port:** USB Type-C
- **Mounting Thread:** 1/4-inch standard thread



Figure 8.1: Battery performance details, highlighting 8 hours of operation and 3 hours for a full charge.

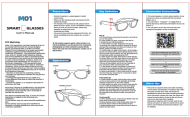





9. WARRANTY AND SUPPORT

For warranty information and technical support, please refer to the official SelfieShow website or contact

customer service through your purchase platform. Keep your proof of purchase for warranty claims.

© 2025 SelfieShow. All rights reserved.

Related Documents - M01

	<p>M01 Smart Glasses User Manual</p> <p>User manual for the M01 Smart Glasses, detailing features, connection instructions, and precautions.</p>
	<p>M01 Device Technical Specifications: JL7018F Chip, Bluetooth, 2.4GHz WiFi</p> <p>Detailed technical specifications for the M01 device, featuring the JL7018F chip, GC05A2 camera, 2.4GHz WiFi, Bluetooth connectivity, battery life, and performance metrics.</p>
	<p>TOKQI M01 Three-Axis Smart Gimbal: Advanced Smartphone Stabilizer</p> <p>Discover the TOKQI M01, a three-axis smart gimbal offering professional stabilization, intelligent tracking, and a built-in fill light for smartphones. Ideal for smooth video recording and photography.</p>
	<p>Tokqi M01 3-Axis Gimbal Stabilizer User Manual</p> <p>User manual for the Tokqi M01 3-Axis Gimbal Stabilizer, detailing its features, operation, and FCC compliance.</p>
	<p>Mytrix Wireless Pro Controller User Manual</p> <p>Comprehensive user manual for the Mytrix Wireless Pro Controller, detailing setup, features, and customization options for compatibility with Switch, Windows PC, iOS, Android, Steam, and Steam Deck.</p>
	<p>SelfieShow Extendable Selfie Stick Tripod with Wireless Remote - User Guide</p> <p>Comprehensive guide to the SelfieShow extendable selfie stick tripod, featuring a wireless remote, portable monopod design, and wide smartphone compatibility for iPhone, Samsung, and Huawei devices.</p>