

VILTROX Retro 12X-12W

VILTROX 12W RGB Camera Light Retro 12X-12W User Manual

Model: Retro 12X-12W

1. INTRODUCTION

Thank you for choosing the VILTROX Retro 12X-12W RGB Camera Light. This portable LED video light is designed for photography and videography, offering adjustable color temperature, RGB full-color mode, and various special effects. Its compact design and integrated battery make it suitable for on-the-go use. This manual provides essential information for safe and effective operation.

2. SAFETY INFORMATION

- Do not expose the device to water or high humidity.
- Avoid direct eye exposure to the light source.
- Do not disassemble or attempt to repair the device yourself. Refer to qualified service personnel.
- Use only the specified charging cable and power adapter.
- Keep out of reach of children.
- Ensure proper ventilation during extended use to prevent overheating.

3. PACKAGE CONTENTS

Verify that all items are present in the package:

- VILTROX Retro 12X RGB Video Light
- Dual Cold Shoe Mount
- Soft Silicone Diffuser
- USB-C Charging Cable
- User Manual (this document)

4. PRODUCT OVERVIEW

The VILTROX Retro 12X-12W features a compact design with a metal frame and leather texture. It includes an integrated display and control buttons for easy operation.



Figure 4.1: VILTROX Retro 12X-12W RGB Camera Light, showing the front, side, and rear display, along with examples of blue light output and the mobile app interface.

4.1 Components and Controls



Figure 4.2: Detailed view of the light's manual controls and interfaces.

- **Display:** Shows current settings (mode, brightness, color temperature, battery level).
- **Power Key:** Turns the device on or off.
- **Mode Key:** Cycles through different lighting modes (CCT, HSI, FX).
- **Switch Key (SET):** Confirms selections or enters sub-menus.
- **Increase/Decrease Keys (+/-):** Adjusts parameters like brightness, color temperature, hue, or saturation.
- **1/4" Screw Hole:** For mounting the light onto stands or cameras. Two holes are available (bottom and side).
- **Type-C Interface:** For charging and continuous power supply.

5. SETUP

5.1 Charging the Battery

The light features a built-in 7.4V/22Wh rechargeable battery. Before first use, fully charge the device.

1. Connect the provided USB-C charging cable to the Type-C interface on the light.
2. Connect the other end of the cable to a compatible USB power adapter (5V/2A recommended).

3. The display will indicate charging status. A full charge typically takes approximately 3.5 hours.



Figure 5.1: The light can be used while charging and can also function as a power bank for other devices.

5.2 Mounting the Light

The light can be mounted using its 1/4" screw holes.

1. Attach the included cold shoe mount to a camera's hot shoe or a compatible rig.
2. Screw the light onto the cold shoe mount using one of the 1/4" threaded holes.
3. Alternatively, mount the light directly onto a light stand or tripod with a 1/4" screw.

5.3 Attaching the Silicone Diffuser

The soft silicone diffuser helps to soften the light output.

1. Align the silicone diffuser with the front panel of the light.
2. Gently push the diffuser onto the light until it is securely fitted.



Figure 5.2: The silicone diffuser attached to the light, providing softer illumination.

6. OPERATING INSTRUCTIONS

6.1 Power On/Off

Press and hold the **Power Key** for a few seconds to turn the light on or off.

6.2 Mode Selection

Press the **Mode Key** to cycle through the available lighting modes:

- **CCT Mode:** Color Correlated Temperature (Bi-color mode).
- **HSI Mode:** Hue, Saturation, Intensity (RGB full-color mode).
- **FX Mode:** Special Effects mode.

6.3 CCT Mode Operation

In CCT mode, adjust color temperature and brightness.

1. Select CCT mode using the **Mode Key**.
2. Press the **SET Key** to switch between adjusting color temperature and brightness.

3. Use the **+/- Keys** to adjust the color temperature from 2500K to 8500K.
4. Use the **+/- Keys** to adjust brightness from 0% to 100%.



Figure 6.1: Visual representation of CCT mode adjustments for color temperature and brightness.

6.4 HSI Mode Operation

In HSI mode, control the full RGB spectrum.

1. Select HSI mode using the **Mode Key**.
2. Press the **SET Key** to switch between adjusting Hue (0-360°), Saturation (0-100L), and Brightness (0-100%).
3. Use the **+/- Keys** to adjust the desired parameter.

6.5 FX Mode (Special Effects) Operation

The light offers 26 built-in special lighting effects.

1. Select FX mode using the **Mode Key**.
2. Use the **+/- Keys** to cycle through the 26 available effects (e.g., Flash, Burst, Candlelight, Police, Ambulance, TV, Firework).
3. Some effects may have adjustable parameters (e.g., speed or intensity), which can be modified using the **SET Key** and **+/- Keys**.

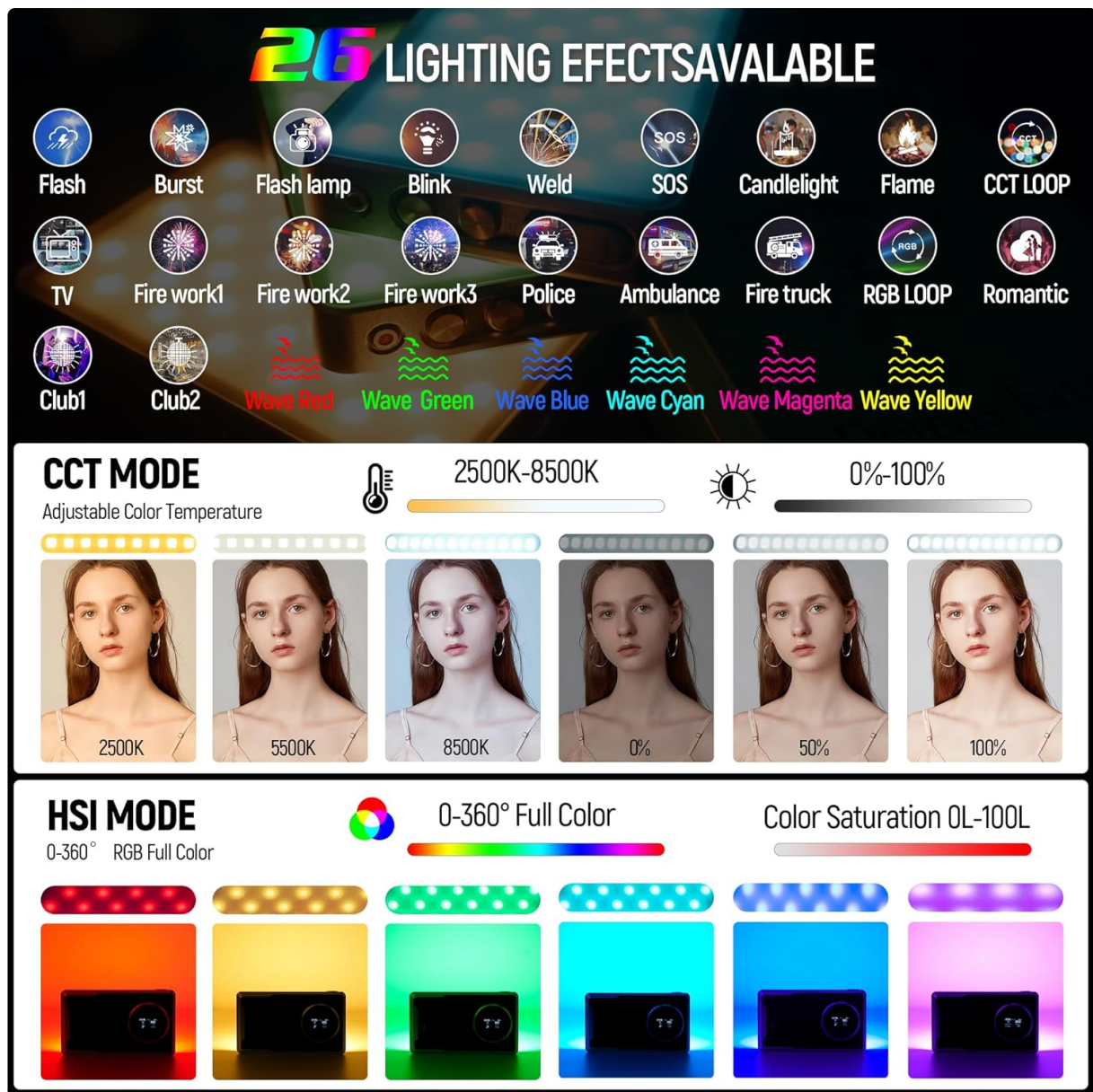


Figure 6.2: Overview of the 26 special lighting effects.

6.6 App Control (Bluetooth)

The light supports control via a smartphone app using Bluetooth.

1. Download the "weeelite" app from the App Store (iOS) or Google Play (Android).
2. On the light, navigate to the Bluetooth settings (refer to the display menu).
3. Enable Bluetooth and set a Group (A-F) and Channel (CH1-19).
4. Open the app on your smartphone and search for the device.
5. Connect to the light. You can now control all parameters remotely.

Figure 6.3: Controlling multiple lights via the smartphone app.

6.7 Power Bank Functionality

The VILTROX Retro 12X-12W can also function as a power bank to charge other devices.

1. Ensure the light is powered on.
2. Connect your smartphone or other device to the light's USB-C port using a compatible USB-C to USB-C cable.

3. The light will begin discharging to charge the connected device.

7. MAINTENANCE

7.1 Cleaning

To clean the light, use a soft, dry cloth. Do not use harsh chemicals or abrasive materials. For the silicone diffuser, it can be gently wiped with a damp cloth if necessary.

7.2 Storage

Store the light in a cool, dry place away from direct sunlight and extreme temperatures. If storing for an extended period, ensure the battery is charged to approximately 50% to prolong its lifespan.

8. TROUBLESHOOTING

Problem	Possible Cause	Solution
Light does not turn on.	Battery is depleted.	Charge the light using the USB-C cable.
Light output is weak.	Brightness setting is low.	Increase brightness using the +/- keys or app.
Cannot connect via Bluetooth app.	Bluetooth not enabled on light or phone. Incorrect group/channel.	Ensure Bluetooth is active on both devices. Verify group and channel settings match. Restart app and light.
Light gets hot during use.	Normal operation at high power.	Reduce brightness or allow for cooling periods. Ensure adequate ventilation.
Power bank function not working.	Light battery too low. Incorrect cable.	Ensure the light has sufficient battery charge. Use a functional USB-C to USB-C cable.

9. SPECIFICATIONS

Feature	Specification
Model	Retro 12X-12W
Power Output	12W
Color Temperature Range	2500K-8500K
CRI	97+
Hue Adjustment	0-360°
Saturation Adjustment	0-100L
Illuminance	1350Lux (at 0.5m)
LED Beads	138 (Bi-color + RGB)

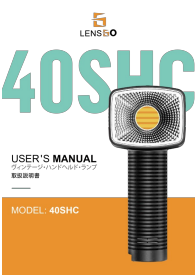
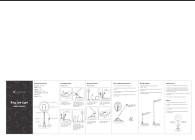
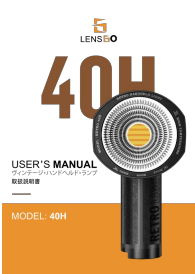
Feature	Specification
Battery Capacity	7.4V/22Wh (Built-in)
Battery Life	Approx. 120 minutes (at max brightness)
Charging Port	USB Type-C (5V/2A)
Charging Time	Approx. 3.5 hours
Connectivity	Bluetooth (2.4G Wireless)
Mounting	1/4" Threaded Holes
Dimensions	6.61 x 4.25 x 2.24 inches (Package)
Weight	8.7 ounces

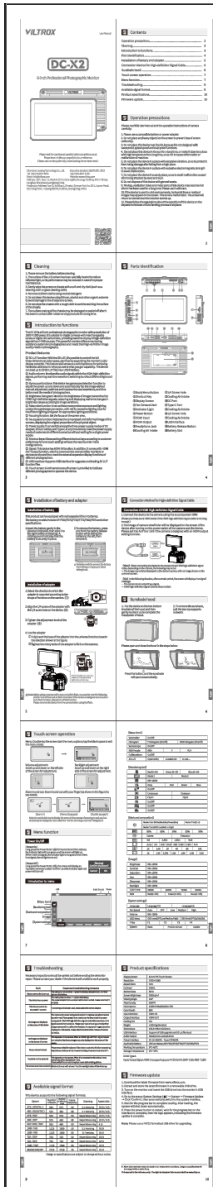
10. WARRANTY AND SUPPORT

VILTROX products are covered by a limited warranty. For detailed warranty information, product support, or service inquiries, please refer to the official VILTROX website or contact their customer service directly. Please retain your proof of purchase for warranty claims.

© 2025 VILTROX. All rights reserved.

Related Documents - Retro 12X-12W

	<p>LENSGO 40SHC Retro Handheld Light User Manual and Specifications</p> <p>Comprehensive user manual for the LENSGO 40SHC Retro Handheld Light, covering its features, operating instructions, accessories, FX modes, bracket usage for cameras and mobile phones, technical specifications, warranty information, maintenance, and safety warnings.</p>
	<p>Imoshion Ring LED Light User Manual for Photography and Video</p> <p>Comprehensive user manual for the Imoshion Ring LED Light, detailing product specifications, setup instructions, operation guides for various shooting modes (overhead, standing), maintenance tips, and important notes for optimal use. Ideal for content creators, photographers, and videographers.</p>
	<p>LENSGO RETRO 40H Handheld Light User Manual</p> <p>Comprehensive user manual for the LENSGO RETRO 40H COB LED handheld light, covering features, operation, accessories, specifications, and safety precautions.</p>



[Viltrox DC-X2 LED Light Manual and Specifications](#)

Official manual and specifications for the Viltrox DC-X2 LED light, detailing features, operation, and technical details for photographers and videographers.



[LENS GO 15STA COB LED Light: Instruction Manual & Specifications](#)

Comprehensive guide to the LENS GO 15STA COB LED light, covering setup, operation, FX modes, specifications, warranty, and maintenance. Learn how to use this versatile photography lighting accessory.



[ORALUCE Smart LED Bulb User Manual and Setup Guide](#)

Comprehensive guide to installing, connecting, and using the ORALUCE Smart LED Bulb with the Smart Life app. Includes setup instructions, product parameters, warranty information, troubleshooting tips, and FCC compliance details.