



Manuals.plus /

› ghd /

› ghd Chronos & Chronos Max Stylers — Professional Flat Iron Hair Straighteners User Manual

ghd 99350161328

ghd Chronos & Chronos Max Stylers User Manual

Model: 99350161328 | Brand: ghd

INTRODUCTION

The ghd Chronos & Chronos Max Stylers are advanced professional flat irons designed for efficient and effective hair styling. Featuring HD motion-responsive technology, these stylers aim to deliver 3x faster one-stroke styling, resulting in 85% more shine, 2x less frizz, and long-lasting high-definition results without extreme heat damage.

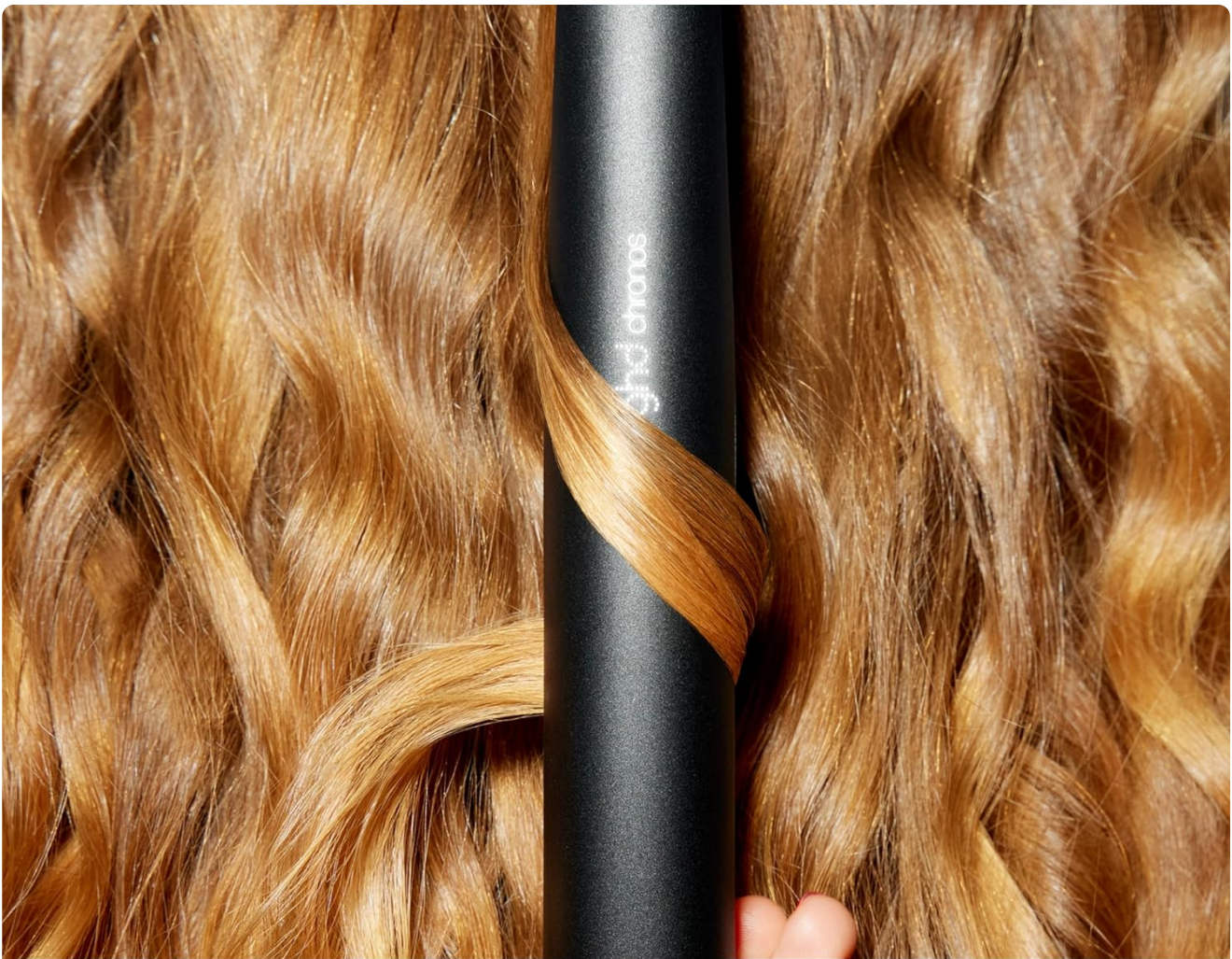


The ghd Chronos Styler, presented alongside its sleek black packaging.

SETUP

Unboxing and Initial Inspection

Upon receiving your ghd Chronos Styler, carefully open the packaging and remove all contents. Ensure the styler and any accessories are present and undamaged. The package typically includes the styler and a heat-resistant protective plate guard.



Section hair and style each section in one-stroke. Glide down for sleek results or rotate for curls & waves.

The ghd Chronos Styler neatly packaged within its box, ready for use.

First Use

Before first use, ensure the styler is clean and free from any debris. Plug the styler into a suitable power outlet. The styler will emit an audible signal and the power button will illuminate, indicating it is heating up. It reaches its optimal styling temperature quickly.

This video provides a detailed look at what is included in the ghd Chronos Styler box and how to prepare it for first use.

OPERATING INSTRUCTIONS

Powering On/Off

To turn on the ghd Chronos Styler, press and hold the power button located on the inside of the styler until you hear an audible signal and the light illuminates. The styler will quickly reach its optimal styling temperature. To turn off,

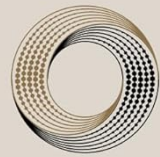
press and hold the power button again until the light extinguishes and you hear a signal.

Straightening Hair

1. Ensure hair is dry and detangled.
2. Section your hair into manageable portions.
3. Take a section of hair and place it between the styler plates, close to the roots.
4. Gently close the plates and glide the styler down the hair shaft from root to tip in a single, smooth stroke. The rounded barrel design allows for snag-free styling.
5. Repeat for all sections until desired straightness is achieved.

NEW GHD CHRONOS

3x faster styling for one stroke
high-definition results that last 24hrs



HD MOTION
-RESPONSIVE
TECHNOLOGY

3X
FASTER
STYLING

NO
EXTREME
HEAT
DAMAGE

A user demonstrating the straightening technique with the ghd Chronos Styler.

Creating Curls and Waves

The ghd Chronos Styler's re-engineered wishbone hinge and ultra-gloss ceramic plates are designed to facilitate versatile styling, including curls and waves. For best results, rotate the styler 180 degrees as you glide it down the hair section, creating a smooth, defined curl or wave.



Visual comparison of hair before and after using the ghd Chronos Styler, highlighting reduced frizz and enhanced shine.

This video provides an overview of the ghd Chronos Styler, demonstrating its key features and how it can be used for various styles.

MAINTENANCE

Cleaning

To maintain optimal performance, ensure your ghd Chronos Styler is clean. After each use, allow the styler to cool completely. Wipe the ceramic plates and the body of the styler with a soft, damp cloth. Do not use abrasive cleaners or harsh chemicals, as these can damage the styler's finish and plates.

Storage

Always store your styler in a safe, dry place. The ghd Chronos Styler comes with a heat-resistant protective plate guard. Always place this guard over the plates after use and once the styler has cooled down. This protects the

plates from damage and prevents accidental burns.



ghd chronos is ideal for faster styling and defined results. Suitable for all hair types

The ghd Chronos Styler shown with its heat-resistant protective plate guard attached, ready for safe storage.

TROUBLESHOOTING

- **Styler Not Heating Up:** Ensure the styler is properly plugged into a working power outlet. Check the power button indicator light. If it's not illuminating, try a different outlet.
- **Flashing Light/Beeping:** This may indicate a fault or that the styler is in sleep mode. Unplug the styler, wait a few minutes, and plug it back in. If the issue persists, contact customer support.
- **Hair Snagging:** Ensure your hair is thoroughly detangled before styling. Glide the styler smoothly without stopping or pulling.
- **Reduced Performance:** Clean the plates regularly to remove product buildup. Ensure the styler has reached its optimal temperature before use.

SPECIFICATIONS

Feature	Detail
Product Dimensions	5 x 3 x 3 inches; 1.61 Pounds
Item Model Number	99350161328
UPC	850011636831
Manufacturer	ghd Professional North America Inc.
Country of Origin	China
Product Benefits	Ultra-fast smart styling with shine, frizz control, and personalized heat -no extreme heat damage.
Hair Type	All
Material	Metal

WARRANTY & SUPPORT

Your ghd Chronos Styler is backed by a manufacturer's warranty. For specific warranty details and duration, please refer to the documentation included with your product or visit the official ghd website. Extended protection plans may also be available for purchase.

For technical support, product inquiries, or warranty claims, please contact ghd Professional North America Inc. customer service. Contact information can typically be found on the product packaging or their official website.

Online Support: Visit the official ghd website for FAQs, product registration, and support resources.

Phone Support: Refer to your product documentation for the customer service phone number.