



[Manuals.plus](#) /

> [Growalleter](#) /

> Growalleter Magnetic Eyeglass Frames for Meta Quest 3 User Manual

Growalleter HC-Q3 Lens Frames

Growalleter Magnetic Eyeglass Frames for Meta Quest 3 User Manual

Model: HC-Q3 Lens Frames

INTRODUCTION

This manual provides instructions for the installation and use of the Growalleter Magnetic Eyeglass Frames designed for the Meta Quest 3 headset. These frames are intended to protect the VR headset lenses from scratches caused by eyeglasses and to allow for the use of custom prescription lenses within the VR environment.

PACKAGE CONTENTS

- 1x Pair Lens Protection Frames (Left & Right)
- (Note: Custom prescription lenses are not included and must be acquired separately.)

SETUP AND INSTALLATION

Follow these steps to correctly install the magnetic eyeglass frames onto your Meta Quest 3 headset. Refer to the accompanying video for a visual guide.

1. **Identify the Lens Frames:** Locate the left ("L") and right ("R") lens frames. These markings are typically found on the frames themselves.

For Meta Quest 3

- mock-up
- Magnetic design
- Customisation available



Image: Left and Right lens frames, marked for correct orientation.

2. **Align the Base Frame:** Each lens frame has three slots. Carefully align these slots with the corresponding points on the Meta Quest 3 headset's lens area.

2-in-1 Magnetic Frames



Image: A hand aligning one of the lens frames with the VR headset's lens.

- 3. Install the Base Frame:** Gently press the lens frame into place. You may need to apply firm, even pressure to ensure all three slots snap securely into position. Start by pressing two slots with both hands, then gently press the third slot. Repeat for the other side.

For Meta Quest 3

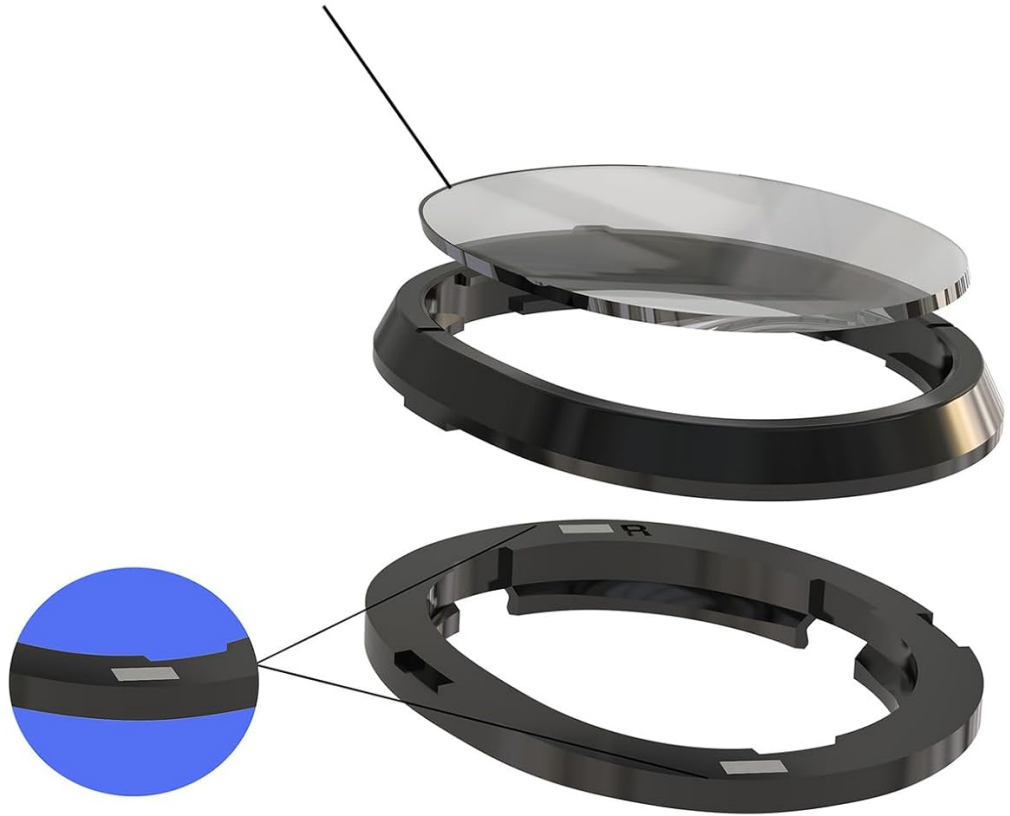
Frame



Image: The lens frames being pressed into the Meta Quest 3 headset.

- 4. Attach Custom Lenses (Optional):** If you have custom prescription lenses, they can be magnetically attached to the installed base frames. Ensure the lenses are correctly oriented before attachment.

Customised lenses to suit your needs



Magnetic frame, quick installation, not easy to fall off

Image: An exploded view showing how a customized lens fits into the magnetic frame.

Installation Video Guide

Your browser does not support the video tag.

Video: A visual tutorial demonstrating the installation process for the Growalleter Magnetic Eyeglass Frames on the Meta Quest 3.

OPERATING INSTRUCTIONS

Once installed, the magnetic eyeglass frames provide a protective barrier for your Meta Quest 3 lenses. If you have installed custom prescription lenses, you can now use your VR headset without wearing your regular eyeglasses, enhancing comfort and immersion.

- The frames are designed to prevent your eyeglasses from directly contacting the VR headset lenses, thereby preventing scratches.
- The magnetic attachment ensures the frames remain stable during use.
- For optimal visual clarity with custom lenses, ensure they are clean and free of smudges before each use.



Image: The Growalleter Magnetic Eyeglass Frames installed within a Meta Quest 3 headset.

MAINTENANCE

Proper maintenance ensures the longevity and effectiveness of your lens frames.

- **Cleaning:** Use a soft, dry microfiber cloth to gently wipe the frames and any installed lenses. Avoid abrasive materials or harsh chemical cleaners, which can damage the surfaces.
- **Storage:** When not in use, store the frames in a clean, dry place away from direct sunlight and extreme temperatures.
- **Handling:** Handle the frames by their edges to avoid touching the lens surfaces (if custom lenses are installed).

TROUBLESHOOTING

Problem	Solution
---------	----------

Problem	Solution
Frames do not snap into place.	Ensure the frames are correctly aligned with the three slots on the Meta Quest 3 lens area. Apply firm, even pressure until you hear a click. It may require pressing two slots first, then the third. Refer to the installation video for visual guidance.
Frames feel loose or fall off.	Verify that all three slots on each frame are fully engaged and snapped into the headset. The magnetic attachment should provide a secure fit. If issues persist, re-install the frames carefully.
Custom lenses do not attach magnetically.	Ensure the custom lenses are designed for magnetic attachment and are compatible with these frames. Check for any obstructions between the lens and the frame's magnetic points.

SPECIFICATIONS

Model Name: HC-Q3 Lens Frames

Brand: Growalleter

Compatible Devices: Meta Quest 3

Special Feature: Lightweight, Magnetic Attachment

Included Components: Spectacle Gasket (Lens Frames)

Item Weight: 0.352 ounces

Package Dimensions: 3.98 x 2.68 x 0.43 inches

WARRANTY AND SUPPORT

For any questions regarding your Growalleter Magnetic Eyeglass Frames, please contact Growalleter customer support. We are committed to providing a satisfactory answer within 24 hours.

Please refer to the product packaging or the official Growalleter website for specific warranty details.