

Manuals+

[Q & A](#) | [Deep Search](#) | [Upload](#)

Manuals.plus /

> [Pyle](#) /

> Pyle PW18SUBA 18-inch Active Powered Subwoofer Speaker User Manual

Pyle PW18SUBA

Pyle PW18SUBA 18-inch Active Powered Subwoofer Speaker User Manual

Model: PW18SUBA | Brand: Pyle

1. INTRODUCTION

Thank you for purchasing the Pyle PW18SUBA 18-inch Active Powered Subwoofer Speaker. This professional-grade subwoofer is designed to deliver powerful, clear, and deep bass for various audio applications, including home theater systems, professional DJ setups, and live sound reinforcement. Featuring a built-in DSP (Digital Signal Processor) for enhanced low-frequency control, robust construction, and versatile connectivity, the PW18SUBA is engineered for reliable performance.

This manual provides essential information for the safe and optimal use of your subwoofer. Please read it thoroughly before operation and retain it for future reference.

2. SAFETY INSTRUCTIONS

To reduce the risk of electric shock, fire, or injury, always observe the following basic safety precautions:

- **Power Source:** Connect the unit only to a power supply of the type described in this manual or marked on the unit. Ensure the voltage selector is set correctly for your region (110V/220V).
- **Grounding:** The unit must be properly grounded to prevent electric shock.
- **Ventilation:** Do not block any ventilation openings. Install in accordance with the manufacturer's instructions. Adequate airflow is crucial for cooling.
- **Heat:** Do not install near any heat sources such as radiators, heat registers, stoves, or other apparatus (including amplifiers) that produce heat.
- **Water and Moisture:** Do not use this apparatus near water. Do not expose to dripping or splashing. No objects filled with liquids, such as vases, should be placed on the apparatus.
- **Cleaning:** Clean only with a dry cloth. Unplug the unit from the wall outlet before cleaning.
- **Power Cord Protection:** Protect the power cord from being walked on or pinched, particularly at plugs, convenience receptacles, and the point where they exit from the apparatus.
- **Servicing:** Refer all servicing to qualified service personnel. Servicing is required when the apparatus has been damaged in any way, such as power-supply cord or plug is damaged, liquid has been spilled or objects have fallen into the apparatus, the apparatus has been exposed to rain or moisture, does not operate normally, or has been

dropped.

- **Overloading:** Do not overload wall outlets or extension cords as this can result in a risk of fire or electric shock.
- **Placement:** Place the subwoofer on a stable, level surface. When using the pole mount socket, ensure the pole and mounted speaker are stable and securely fastened.

3. PACKAGE CONTENTS

Carefully unpack the box and ensure all items are present and in good condition. If any items are missing or damaged, contact your dealer immediately.

- Wooden Subwoofer (18-inch)
- Power Cable



Image: Contents of the box, including the subwoofer and power cable, with product dimensions indicated.

4. PRODUCT FEATURES

The Pyle PW18SUBA subwoofer is equipped with advanced features for superior audio performance and user convenience:

- **High Power Output:** 750 Watts RMS / 1500 Watts Program / 3000 Watts Peak Power for robust bass reproduction.
- **DSP Digital Signal Processor:** Integrated DSP with Boost for extended low-frequency control and optimized sound.
- **Large Woofer:** Features an 18-inch woofer with a 126oz magnet and 4-inch voice coil for powerful and accurate bass.
- **LED Indicators:** Power-On, Signal Input, and Clip Limiter LED indicators for easy monitoring of status and performance.
- **Balanced XLR Connectivity:** Balanced XLR input and XLR Thru output jacks for parallel connections to other audio equipment.
- **Cooling System:** Passive heat sink with an integrated fan for efficient cooling during extended operation.
- **Adjustable Crossover:** Subwoofer crossover with selectable low-pass frequencies (80Hz/100Hz/120Hz).
- **Phase Control:** Subwoofer phase control for optimal integration with other speakers.
- **Built-in Pole Mount Socket:** Allows for easy mounting of a full-range speaker above the subwoofer.
- **Carrying Handles:** Integrated carrying handles for convenient transport.
- **Durable Construction:** Wooden painted enclosure with MDF board and a custom metal grill for enhanced durability and protection.
- **Bluetooth Wireless Streaming:** Hassle-free Bluetooth 5.0 for wireless music streaming from compatible devices.
- **TWS Function:** Pair with another subwoofer for true wireless stereo sound.



Image: Front and rear views of the Pyle PW18SUBA subwoofer, highlighting its robust design and connectivity options.

3000 WATTS OF PURE AUDIO BLISS!

Reliable Deep Bass and Optimized Sound

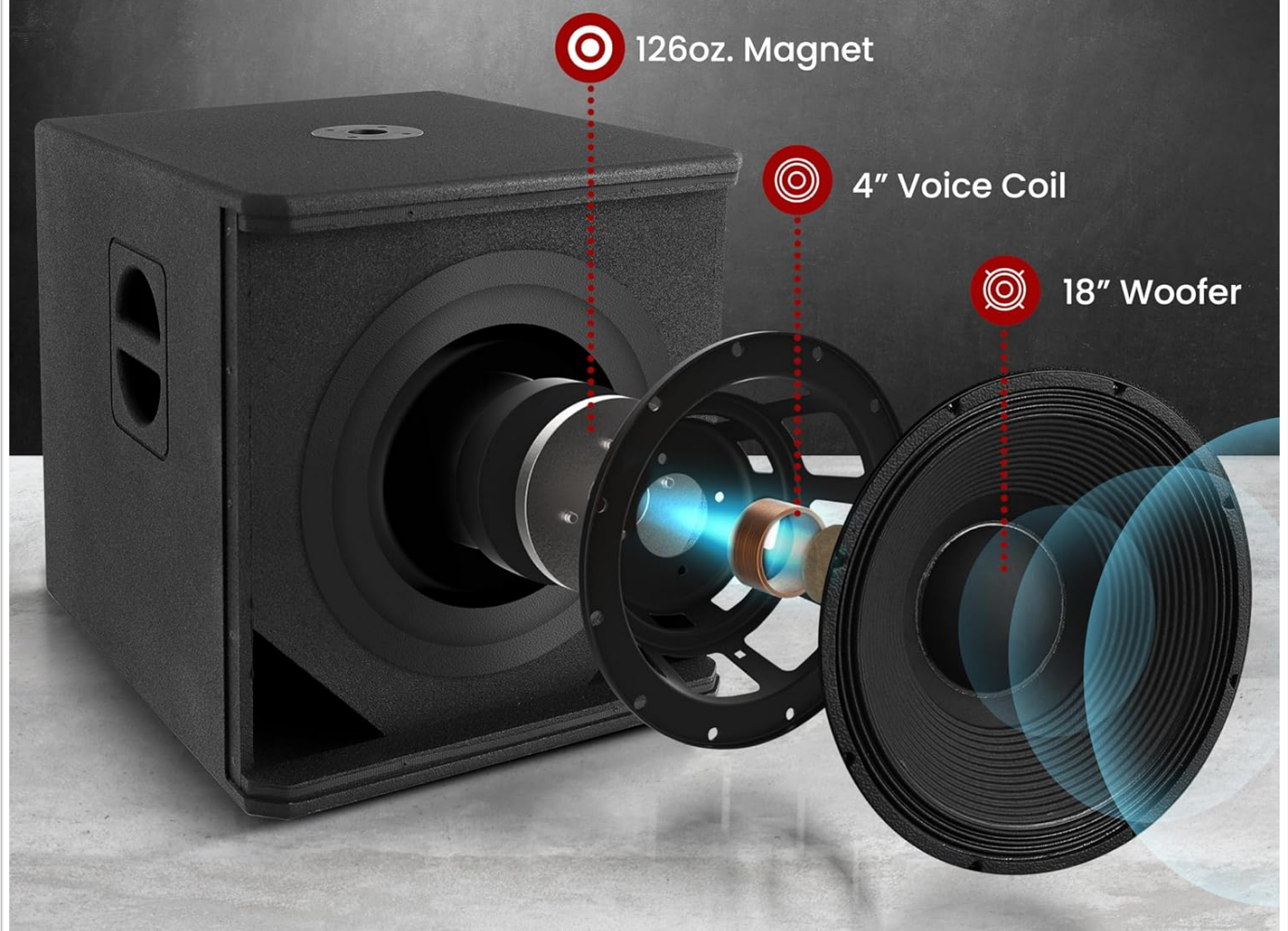
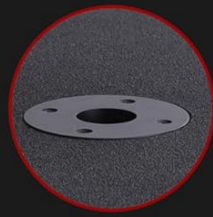


Image: An exploded view illustrating the internal components, including the 18-inch woofer, 4-inch voice coil, and 126oz magnet, contributing to its powerful bass.

PRODUCT FEATURES

Pole Mount
Socket



Carrying
Handles



Detachable
Speaker Grills



Painted Wooden
Enclosure
with MDF Board

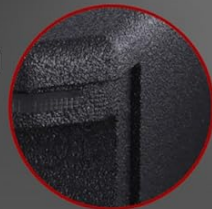


Image: Key physical features of the subwoofer, including the pole mount socket for satellite speakers, ergonomic carrying handles, detachable speaker grills, and the durable painted wooden enclosure.

5. SETUP

Follow these steps to set up your Pyle PW18SUBA subwoofer:

1. **Placement:** Position the subwoofer on a stable, flat surface. For optimal bass response, consider placing it in a corner or near a wall. Ensure there is adequate space around the unit for ventilation.
2. **Voltage Selection:** Locate the voltage selector switch on the rear panel. Ensure it is set to the correct voltage for your region (110V or 220V) before connecting to power.
3. **Power Connection:** Connect the supplied power cable to the AC power input on the rear panel of the subwoofer and then to a suitable wall outlet. Do not power on the unit yet.
4. **Audio Input Connection:** Connect your audio source (e.g., mixer, audio interface, pre-amplifier) to the Balanced XLR Input jacks (Input A or Input B) on the rear panel using XLR cables.
5. **Daisy Chaining (Optional):** If connecting multiple subwoofers or sending the signal to other powered speakers, use

the Balanced XLR Thru Output jacks (Output A or Output B) to pass the audio signal.

- Pole Mounting (Optional):** If using a pole-mounted full-range speaker, insert the pole into the built-in pole mount socket on top of the subwoofer. Ensure the pole and speaker are securely seated.
- Initial Power On:** Once all connections are secure, switch the Power On/Off switch to the 'ON' position. The Power-On LED indicator should illuminate.

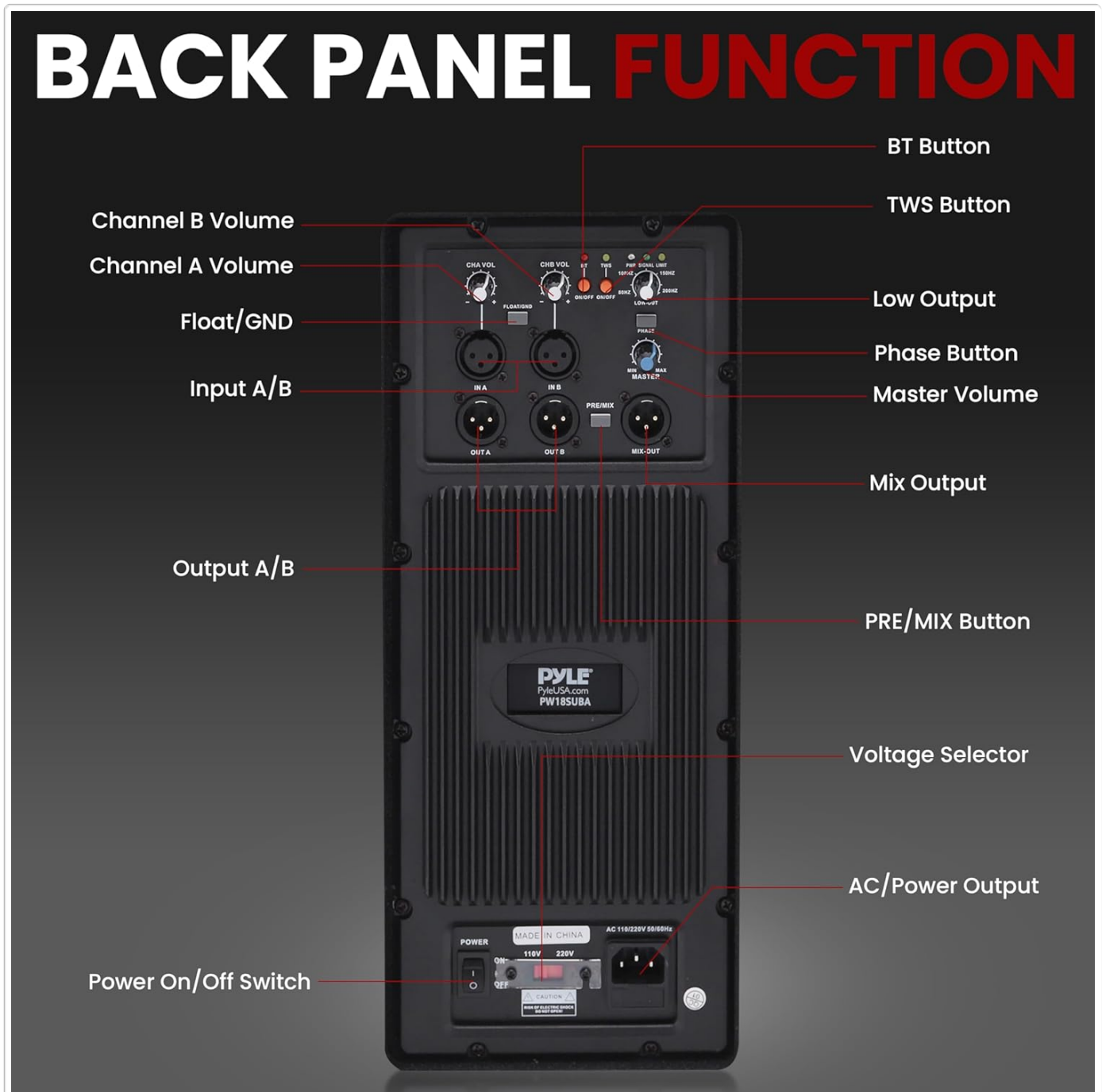


Image: The rear panel of the subwoofer, showing all input/output connections, volume controls, DSP settings, and the power switch.

6. OPERATION

Operating your Pyle PW18SUBA subwoofer involves adjusting various controls to achieve the desired sound output:

6.1. Rear Panel Controls

- Channel A/B Volume:** Adjusts the input level for Channel A and Channel B. Start with these at a low setting and gradually increase.
- Float/GND Switch:** Used to eliminate ground loop hum. Try switching if you experience hum.

- **Input A/B:** Balanced XLR input jacks for connecting audio sources.
- **Output A/B:** Balanced XLR Thru output jacks for passing the input signal to other devices.
- **PRE/MIX Button:** Selects whether the Mix Output sends a pre-EQ signal or a mixed signal.
- **BT Button:** Activates Bluetooth pairing mode.
- **TWS Button:** Activates True Wireless Stereo pairing mode with another compatible Pyle subwoofer.
- **Low Output:** Output for low-frequency signal.
- **Phase Button:** Toggles the phase of the subwoofer output (0° or 180°). Adjust this to ensure the subwoofer's output is in phase with your main speakers for optimal bass impact.
- **Master Volume:** Controls the overall output volume of the subwoofer.
- **Voltage Selector:** Selects between 110V and 220V AC power.
- **AC/Power Output:** Power input for the supplied power cable.
- **Power On/Off Switch:** Turns the unit on or off.

6.2. DSP and Crossover Settings

The integrated DSP allows for fine-tuning of the subwoofer's performance:

- **Subwoofer Crossover:** Use the dedicated knob to select the desired low-pass frequency (80Hz, 100Hz, or 120Hz). This determines the highest frequency the subwoofer will reproduce. Match this to the low-frequency cutoff of your main speakers for a seamless transition.
- **Subwoofer Level Adjustment:** Fine-tune the subwoofer's output level relative to your main speakers.
- **DSP Boost:** The DSP includes a boost function for extended low-frequency control. Experiment with this setting to achieve the desired bass impact.

PROFESSIONAL DESIGN, UNRIVALED PERFORMANCE

DSP Digital Signal Processor with Boost
for Extended Low-Frequency Control



Image: A close-up of the control panel, showing the illuminated knobs and indicators for precise adjustments of volume, crossover, and DSP settings.

6.3. Bluetooth Pairing

To connect a Bluetooth device:

1. Ensure the subwoofer is powered on.
2. Press the 'BT' button on the rear panel. The Bluetooth indicator will flash, indicating it's in pairing mode.
3. On your Bluetooth-enabled device (smartphone, tablet, etc.), search for available Bluetooth devices.
4. Select 'Pyle PW18SUBA' from the list.
5. Once connected, the Bluetooth indicator will stop flashing and remain solid. You can now stream audio wirelessly to the subwoofer.

YOUR MUSIC. YOUR WAY!

Hassle-free Bluetooth Wireless Music Streaming



Image: The subwoofer wirelessly connected to a smartphone, demonstrating its Bluetooth music streaming capability.

6.4. TWS (True Wireless Stereo) Function

To pair two PW18SUBA subwoofers for a stereo setup:

1. Ensure both subwoofers are powered on and not connected to any other Bluetooth devices.
2. On one subwoofer, press the 'TWS' button. It will enter TWS pairing mode.
3. On the second subwoofer, press the 'TWS' button.
4. The two subwoofers will automatically connect to each other. Once connected, the TWS indicator will become solid on both units.
5. Now, connect your Bluetooth device to one of the subwoofers (the master unit) as described in section 6.3. Audio will play in stereo across both subwoofers.

7. MAINTENANCE

Proper maintenance ensures the longevity and optimal performance of your subwoofer:

- **Cleaning:** Regularly wipe the exterior of the subwoofer with a soft, dry cloth. Do not use abrasive cleaners, waxes, or solvents.
- **Ventilation:** Ensure the ventilation openings are clear of dust and debris. Periodically check the fan for obstructions.
- **Storage:** If storing the subwoofer for an extended period, disconnect it from power and store it in a cool, dry place, away from direct sunlight and extreme temperatures.
- **Cable Management:** Ensure all cables are neatly organized and not under strain or pinched, which can cause damage.

8. TROUBLESHOOTING

If you encounter issues with your Pyle PW18SUBA subwoofer, refer to the following common problems and solutions:

Problem	Possible Cause	Solution
No power	Power cable not connected; Power switch off; No power from outlet; Incorrect voltage selection.	Ensure power cable is securely connected. Turn power switch ON. Check outlet with another device. Verify voltage selector is set correctly (110V/220V).
No sound output	Input cables not connected; Volume levels too low; Incorrect input selected; Source device not playing.	Check XLR input connections. Increase Channel Volume and Master Volume. Ensure audio source is playing and sending a signal.
Distorted sound	Input signal too high (clipping); Volume levels too high; Damaged speaker.	Reduce input signal level from source. Lower Channel Volume and Master Volume. Check Clip Limiter LED; if it's constantly on, reduce volume. If distortion persists at low volumes, contact support.
Humming or buzzing noise	Ground loop; Loose cable connections; Interference.	Try switching the Float/GND switch. Ensure all cables are securely connected. Try plugging the subwoofer into a different electrical circuit.
Bluetooth not connecting	Subwoofer not in pairing mode; Device too far; Device already connected to another unit.	Press the 'BT' button to enter pairing mode. Ensure device is within range. Disconnect device from other Bluetooth units and try again.
TWS pairing failed	Subwoofers too far apart; One unit already paired via Bluetooth; Interference.	Ensure both units are close to each other. Disconnect any Bluetooth devices from both subwoofers before attempting TWS pairing.

If the problem persists after trying these solutions, please contact Pyle customer support for assistance.

9. SPECIFICATIONS

Detailed technical specifications for the Pyle PW18SUBA 18-inch Active Powered Subwoofer Speaker:

Feature	Specification
Model Name	PW18SUBA
Speaker Type	Subwoofer

Feature	Specification
Power Supply	750 Watts RMS / 1500 Watts Program / 3000 Watts Peak Power
Woofer Size	18 inches
Magnet Weight	126 oz
Voice Coil	4 inches
Maximum SPL	131dB Peak / 128dB Continuous
Construction Materials	Wooden Painted Enclosure with MDF Board
Subwoofer Crossover	80Hz/100Hz/120Hz Low Pass
Connectivity Technology	Wired (XLR), Bluetooth
Bluetooth Version	5.0
Product Dimensions (D x W x H)	20.87" x 25.98" x 24.21" inches
Item Weight	95.7 pounds
Color	Black
Mounting Type	Floor Standing, Pole Mount
UPC	842893151960

10. WARRANTY AND SUPPORT

Pyle products are designed and manufactured to the highest quality standards. For information regarding warranty coverage, please refer to the warranty card included with your product or visit the official Pyle website. If you require technical assistance or have questions about your product, please contact Pyle customer support:

- **Website:** www.pyleusa.com
- **Customer Service:** Refer to the contact information on the Pyle website for phone and email support.