

## MOYSUWE MDM701

# MOYSUWE 7-inch LCD Digital Microscope User Manual

Model: MDM701 | Brand: MOYSUWE

## INTRODUCTION

This manual provides comprehensive instructions for the setup, operation, and maintenance of your MOYSUWE 7-inch LCD Digital Microscope (Model MDM701). Designed for detailed observation and analysis, this microscope offers up to 1200X magnification, a large 7-inch LCD screen for easy viewing, and versatile connectivity options for PC. It is ideal for electronics repair, coin inspection, scientific study, and various industrial applications.

## PACKAGE CONTENTS

Please verify that all items listed below are included in your package. If any items are missing or damaged, please contact customer support.

- MOYSUWE 7-inch LCD Digital Microscope Unit
- Adjustable Stand with Base (11-inch long stand)
- USB Cable
- Wireless Remote Control
- 32GB SD Card
- Power Adapter
- Screwdrivers and Screws for assembly
- Lens Cleaning Cloth
- User Manual (this document)



Figure 1: Complete package contents including the microscope, stand, remote, and SD card.

## SETUP GUIDE

1. **Assemble the Stand:** Attach the microscope holder to the stand column, and then secure the column to the base using the provided screws and screwdriver. Ensure all connections are firm and stable.
2. **Mount the Microscope:** Slide the microscope unit into the holder on the stand. Tighten the knob to secure it in place.
3. **Connect Power:** Plug the power adapter into the microscope's power input port and then into a standard electrical outlet. The device will power on automatically or can be turned on using the power button.
4. **Insert SD Card:** Locate the SD card slot on the microscope unit and gently insert the provided 32GB SD card until it clicks into place. This is necessary for saving photos and videos.

5. **Initial Charge:** For optimal battery life, fully charge the microscope for approximately 3 to 4 hours before first use. A power indicator light will show charging status.



Figure 2: The upgraded 11-inch stand provides a larger operating space for various objects, including full coins.

## OPERATING INSTRUCTIONS

### Adjusting Magnification and Focus

The microscope offers a magnification range from 10X to 1200X. To adjust magnification, move the microscope unit up or down along the stand column. Use the focus wheel on the microscope body to achieve a clear image on the 7-inch LCD screen.

# 10X-1200X Magnification

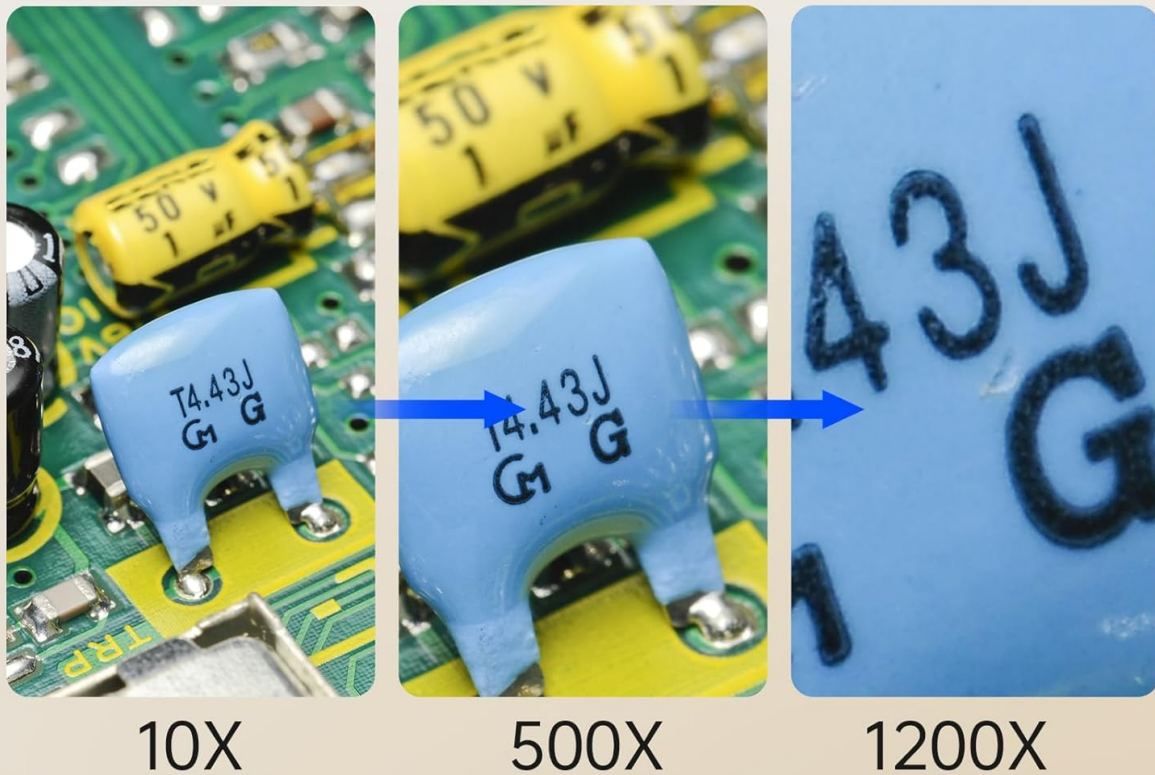


Figure 3: Visual representation of magnification levels from 10X to 1200X, showing increasing detail.

## Lighting Control

The microscope is equipped with 8 built-in LED lights around the lens and two adjustable gooseneck lamps. These provide ample illumination for various subjects. Use the brightness control on the microscope or remote to adjust the intensity of the lights for optimal viewing.



# 8 LED & 2 Gooseneck Lights



Figure 4: The 8 built-in LEDs and 2 flexible gooseneck lights provide comprehensive illumination for detailed observation.

## Remote Control and On-Screen Menu

The included wireless remote control allows for convenient operation, including adjusting settings, capturing photos, and recording videos without touching the microscope, which helps prevent shaking. The on-screen menu provides access to various functions and settings.

- **Mode Switch:** Toggle between photo and video modes.
- **OK Button:** Confirm selections or capture media.
- **Navigation Buttons:** Move through menu options.

# Remote And Touch Control

Convenient and anti-shaking



Figure 5: The wireless remote control enables convenient and stable operation, reducing vibrations during capture.

## Photo and Video Capture

The microscope supports 12MP photo capture and 1080P video recording. Ensure the 32GB SD card is inserted. Use the dedicated buttons on the microscope unit or the remote control to capture images or start/stop video recording. Files are saved directly to the SD card.

## PC Connectivity

Connect the microscope to a Windows PC, Mac, or iMac using the provided USB cable for real-time viewing and data transfer. The microscope will function as a webcam or storage device, allowing you to view observations on a larger screen and manage captured files.





Figure 6: The microscope is highly effective for detailed tasks such as electronics repair and soldering, providing a clear magnified view.

## MAINTENANCE

- **Cleaning the Lens:** Use the provided lens cleaning cloth or a soft, lint-free cloth specifically designed for optical lenses. Gently wipe the lens surface to remove dust or smudges. Avoid using abrasive materials or chemical cleaners.
- **Cleaning the Body:** Wipe the microscope body and stand with a soft, dry cloth. If necessary, a slightly damp cloth can be used, but ensure no moisture enters the electronic components.
- **Storage:** When not in use, store the microscope in a clean, dry, and dust-free environment. Keep it away from direct sunlight, extreme temperatures, and high humidity.
- **Battery Care:** If the microscope will not be used for an extended period, charge the battery periodically (e.g., every 3 months) to maintain its health.

## TROUBLESHOOTING

Problem	Possible Cause	Solution
---------	----------------	----------

Problem	Possible Cause	Solution
No power/Screen is blank	Battery is low or depleted; Power adapter not connected properly.	Connect the power adapter and charge the microscope. Ensure the power button is pressed.
Image is blurry/out of focus	Incorrect focus adjustment; Object too close/far from lens; Lens is dirty.	Adjust the focus wheel. Adjust the distance between the lens and the object. Clean the lens with the provided cloth.
Cannot save photos/videos	SD card not inserted; SD card full; SD card corrupted.	Ensure the SD card is properly inserted. Delete unnecessary files or replace the SD card. Format the SD card if necessary (this will erase all data).
Remote control not working	Remote battery depleted; Obstruction between remote and microscope.	Replace the remote control battery. Ensure a clear line of sight to the microscope's IR receiver.
No image on PC when connected	Incorrect USB mode selected; Driver issue; USB cable faulty.	Ensure the microscope is in PC camera mode. Try a different USB port or cable. Install necessary drivers if prompted by your operating system.

## SPECIFICATIONS

Feature	Detail
Brand	MOYSUWE
Model Number	MDM701
Screen Size	7-inch LCD
Max. Magnification	1200X
Photo Resolution	12MP
Video Resolution	1080P
Storage	Supports up to 32GB SD Card (32GB included)
Lighting	8 Built-in LEDs + 2 Gooseneck Lamps
Stand Height	11 inches (adjustable)
Material	Metal, Aluminum alloy
Item Weight	3.17 Kilograms
Compatible Devices	Personal Computer (Windows, Mac, iMac)
Power Source	Corded Electric

## WARRANTY AND SUPPORT

Warranty information for your MOYSUWE Digital Microscope is typically provided with the product



packaging or can be obtained by contacting MOYSUWE customer service directly. Please retain your proof of purchase for warranty claims.

For technical support, troubleshooting assistance, or inquiries regarding parts and accessories, please refer to the contact information provided on the MOYSUWE official website or within your product's original documentation.