

LinknLink eSensor-K3

LinknLink eSensor-K3 5-in-1 Smart Multi Sensor User Manual

Model: eSensor-K3

1. INTRODUCTION

The LinknLink eSensor-K3 is a versatile 5-in-1 smart multi-sensor designed to enhance your home automation system. It integrates temperature, humidity, PIR motion, and brightness sensing capabilities into a single compact device. Additionally, it features a smart button function for triggering custom automations or emergency alerts.

This manual provides essential information for setting up, operating, and maintaining your eSensor-K3, ensuring optimal performance and integration with your smart home environment.



Image 1.1: The LinknLink eSensor-K3 device shown alongside its companion smartphone application interface.

2. PRODUCT OVERVIEW

The eSensor-K3 combines multiple sensing functions into one device, offering comprehensive environmental monitoring and control:

- **Temperature Sensor:** Monitors ambient temperature.
- **Humidity Sensor:** Measures relative humidity levels.
- **PIR Motion Sensor:** Detects movement within its field of view.
- **Brightness Sensor:** Measures ambient light intensity.
- **Smart Button:** A programmable button for triggering actions or alerts.

You Just Need One Super Sensor For All Automations



Image 2.1: Visual representation of the five integrated functions of the eSensor-K3.

3. SETUP

3.1 Package Contents

Ensure all components are present:

- LinknLink eSensor-K3 Multi Sensor
- Wall hanging plate (for mounting)
- *Note: 3x AAA batteries are required and not included. An eHome Hub is also required for operation and is typically included with the sensor.*

3.2 Battery Installation

1. Gently open the battery compartment cover on the back of the eSensor-K3.
2. Insert three (3) AAA alkaline batteries, ensuring correct polarity (+/-).
3. Close the battery compartment cover securely.

The sensor is designed for long battery life, up to three years under typical usage conditions.

3.3 Mounting the Sensor

The eSensor-K3 can be placed on a flat surface or mounted to a wall using the provided wall hanging plate. Its wireless design allows flexible placement.

1. Choose a suitable location for the sensor, considering the desired monitoring area and wireless range (up to 70m line-of-sight).
2. For wall mounting, attach the wall hanging plate to the desired surface using appropriate adhesive or screws (not included).
3. Slide the eSensor-K3 onto the wall hanging plate until it clicks into place.



Image 3.1: Illustration of the eSensor-K3 dimensions and wall mounting mechanism.

Easy Installation



Battery Powered



Sticked Wall Mounting



Wireless Long Range

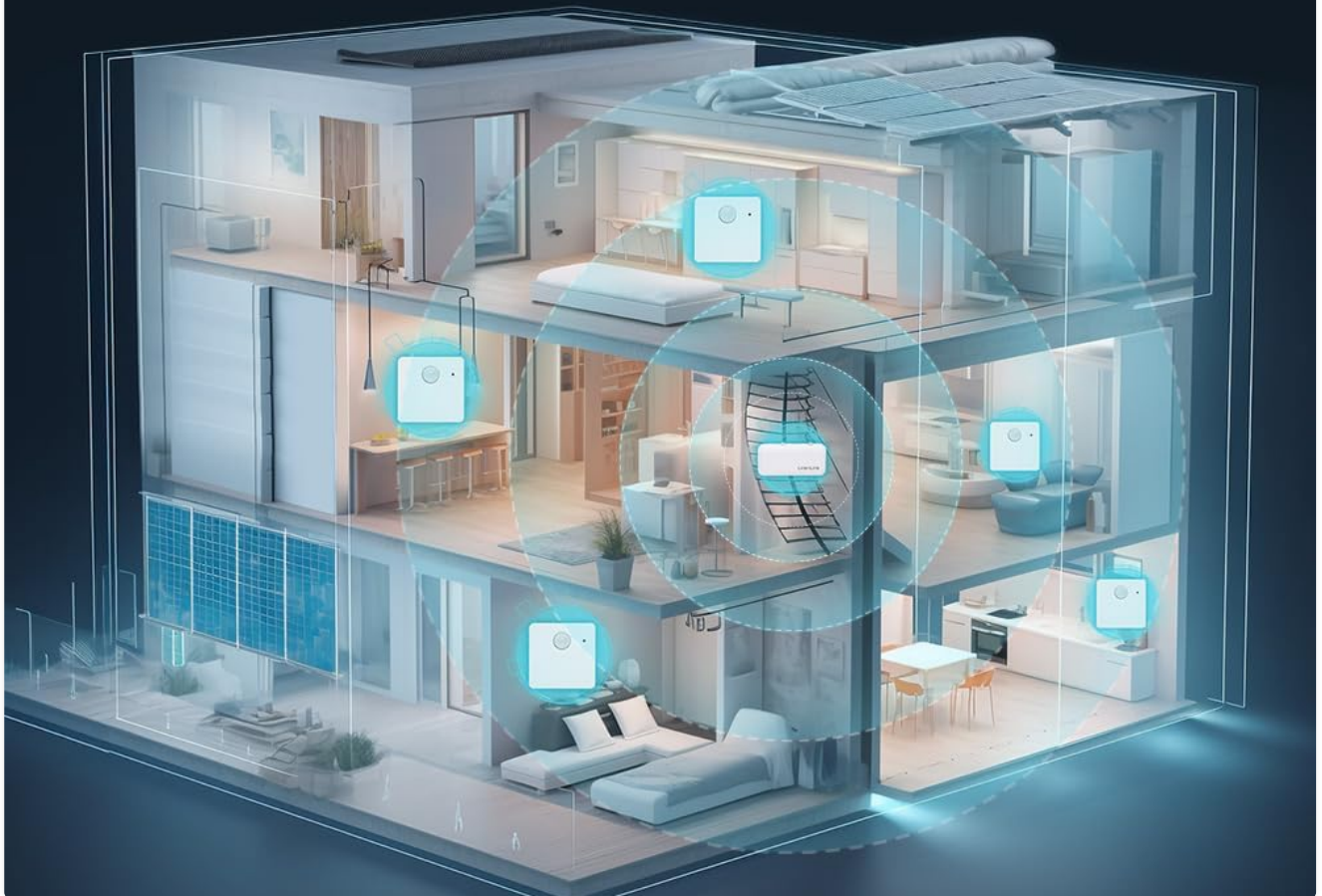


Image 3.2: Example of eSensor-K3 placement for optimal coverage within a home.

3.4 App Pairing and Initial Configuration

To utilize the full functionality of your eSensor-K3, it must be paired with the LinknLink App and connected to an eHome Hub.

1. Download the "LinknLink" application from your smartphone's app store (available for iOS and Android).
2. Ensure your eHome Hub is powered on and connected to your home network.
3. Open the LinknLink App and follow the on-screen instructions to add a new device.
4. The app will guide you through the process of discovering and pairing your eSensor-K3 with the eHome Hub.
5. Once paired, you can name your sensor and assign it to a specific room within the app.

4. OPERATING INSTRUCTIONS

4.1 Monitoring with the LinknLink App

The LinknLink App provides real-time data and historical records for all sensor measurements.

- **Instant Data:** View current temperature, humidity, motion status, and brightness levels.
- **Visualized Graph:** Access graphical representations of data trends over time.
- **History Records:** Review past sensor readings.



Image 4.1: Example of a temperature alert notification received on the LinknLink App.

4.2 Setting Up Notifications and Limits

Configure the app to receive alerts for abnormal conditions:

1. In the LinknLink App, navigate to the eSensor-K3 settings.
2. Set desired upper and lower limits for temperature, humidity, and brightness.
3. Enable push notifications to receive alerts on your smartphone when these limits are exceeded or motion is detected.

Best Choice for Special Places

Fridge & Freezer | Wine Cellar | Garden Sheds



Image 4.2: The eSensor-K3 monitoring conditions in specialized environments like a refrigerator.

4.3 Voice Control and Smart Home Integration

The eSensor-K3 is compatible with Amazon Alexa and Google Home, allowing for voice-activated queries and routine automations.

- **Alexa/Google Home Integration:** Link your LinknLink account within the Alexa or Google Home app.
- **Voice Commands:** Use commands like "Alexa, what's the temperature in the living room?" or "Hey Google, what's the humidity?"
- **Routines:** Create routines based on sensor readings (e.g., "If motion is detected, turn on the light").

Voice with Alexa | Google | Siri

Check All Data on Your Familiar Apps and
Say to Query Status



Image 4.3: Voice control functionality with Amazon Alexa and Google Home.

4.4 Using the Smart Button

The integrated smart button can be configured within the LinknLink App to trigger various actions or alerts. This can include activating other smart devices or sending custom notifications.

4.5 Advanced Automations

Leverage the sensor data to create sophisticated home automations:

- Combine motion detection with temperature readings to control heating/cooling.
- Use brightness levels to adjust lighting automatically.
- Set up security alerts based on unexpected motion.

Powerful Automations

Even You can Use Temp/Humidity as Toggle
in Alexa Routines

WHEN 18:00-08:00

IF + **THEN**

Person Detected < 64.4°F Open

IF **THEN**

No Person Off

works with alexa

* Google Home Doesn't Support Device Automations. Consult vendor how to use temp/humidity in Alexa Routines

Image 4.4: Examples of advanced automations using eSensor-K3 data with Alexa.

4.6 Data Export and Modbus TCP Support

For advanced users and developers, the eSensor-K3 offers robust data management options:

- **Data Export:** Download up to 3 years of historical data to Excel for detailed analysis.
- **Modbus TCP:** Supports Modbus TCP protocol, enabling integration with third-party software and local network data querying without requiring API development.

3-Year Data Storage & Export

Suitable for Scientific and Other Needs for Longer Data Storage



Image 4.5: Data storage and export features of the eSensor-K3.

Support Modbus TCP

Easy and Fast for Integration
with 3rd-Party Software

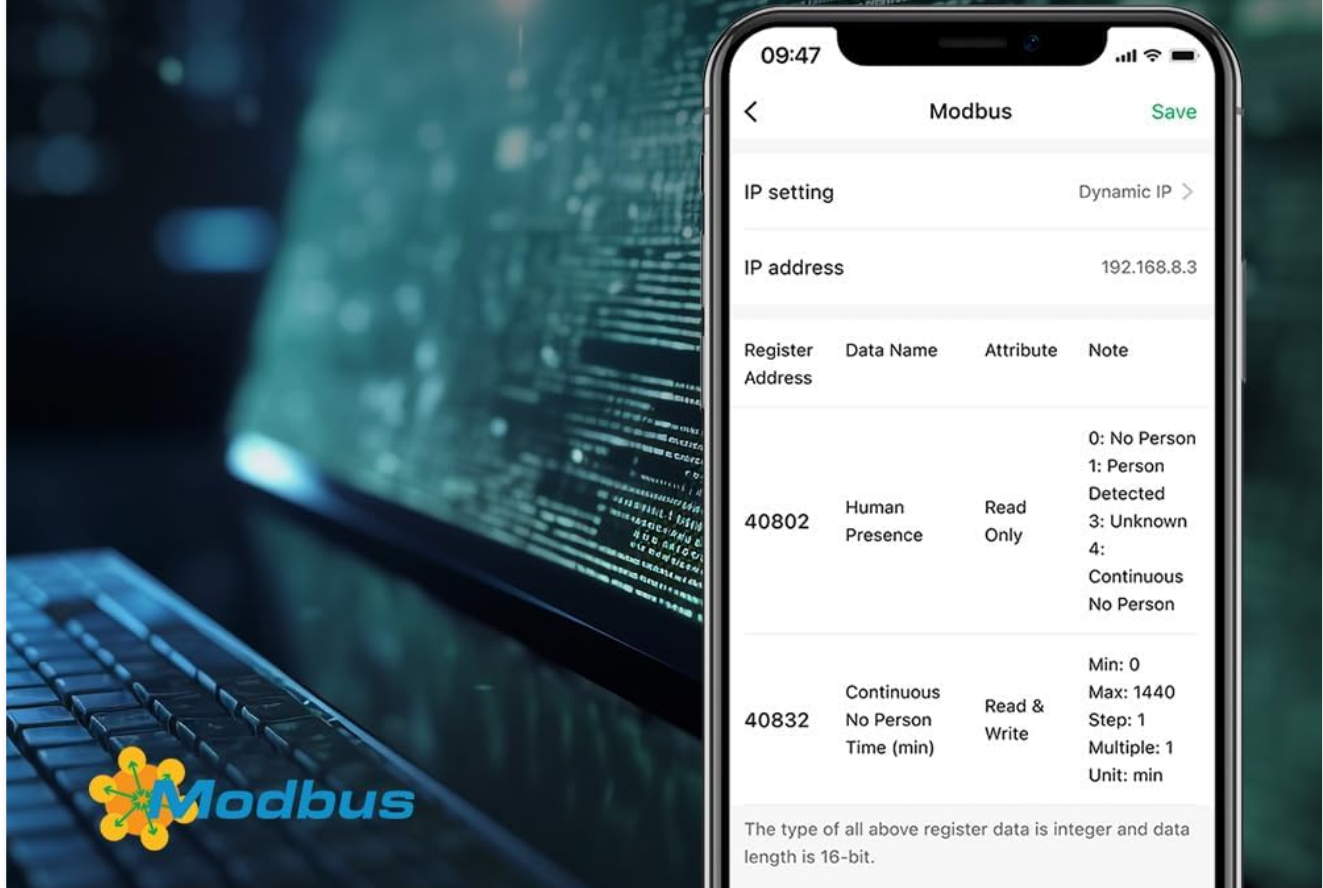


Image 4.6: Modbus TCP interface for advanced integration.

5. MAINTENANCE

5.1 Battery Replacement

When the battery level is low, the LinknLink App will typically provide a notification. Replace the three AAA batteries as described in Section 3.2. Always use new alkaline batteries for optimal performance and battery life.

5.2 Cleaning

To clean the sensor, gently wipe the exterior with a soft, dry cloth. Do not use abrasive cleaners or allow moisture to enter the device.

6. TROUBLESHOOTING

- Sensor not reporting data:

- Check battery levels and replace if necessary.
- Ensure the eSensor-K3 is within range of the eHome Hub (max 70m line-of-sight).
- Verify the eHome Hub is powered on and connected to the internet.
- Restart the LinknLink App.

- **Notifications not received:**

- Confirm push notifications are enabled for the LinknLink App in your phone's settings.
- Check that limits and alerts are correctly configured within the LinknLink App.
- Ensure your phone has an active internet connection.

- **Voice assistant integration issues:**

- Verify that the LinknLink skill/service is enabled and linked in your Alexa or Google Home app.
- Ensure the eSensor-K3 is named clearly and consistently across all platforms.
- Check your internet connection.

- **Inaccurate readings:**

- Ensure the sensor is not placed near heat sources, direct sunlight, or in areas with extreme drafts, which can affect temperature and humidity readings.
- For motion detection, ensure the sensor's view is unobstructed.

7. SPECIFICATIONS

Feature	Detail
Brand	LinknLink
Model	eSensor-K3
Sensor Functions	Temperature, Humidity, PIR Motion, Brightness, Smart Button
Power Source	3x AAA Batteries (not included)
Battery Life	Up to 3 years (typical usage)
Connectivity	433MHz Wireless
Wireless Range	Max 70m (line-of-sight)
Dimensions (L x W x H)	2 x 2 x 2.5 inches (approx. 50.8 x 50.8 x 63.5 mm)
Weight	8.6 ounces (approx. 243.8 grams)
Installation Type	Self-Adhesive / Wall Mount
Compatible Hub	LinknLink eHome Hub (required)
Smart Home Integration	Amazon Alexa, Google Home
Advanced Features	3-Year Data Storage, Excel Export, Modbus TCP Support

8. WARRANTY AND SUPPORT

8.1 Warranty Information


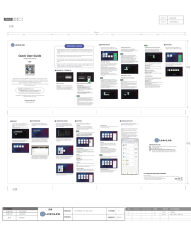
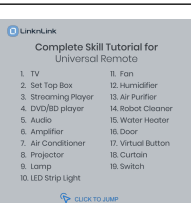
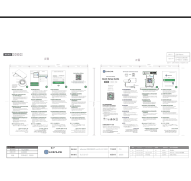

Warranty details for the LinknLink eSensor-K3 are typically provided with your purchase documentation or can be found on the official LinknLink website. Please refer to these resources for specific terms and conditions.

8.2 Customer Support

For technical assistance, troubleshooting, or further inquiries, please visit the official LinknLink support website or contact their customer service through the LinknLink App. Keep your product model number (eSensor-K3) and purchase information ready when seeking support.

Official LinknLink Store: [LinknLink Smart Home Store](#)

Related Documents - eSensor-K3

	<p>LinknLink eMotion Human Radar Sensor User Guide</p> <p>User guide for the LinknLink eMotion Human Radar Sensor, detailing setup, installation, app integration, sensor functionality, and home automation features.</p>
	<p>LinknLink iSG Quick User Guide</p> <p>Comprehensive quick start guide for the LinknLink Intelligent Super Gateway (iSG). Learn how to set up, connect devices (Wi-Fi, Zigbee, Matter, Home Assistant), manage groups, create automations, and sync with the LinknLink app for a seamless smart home experience.</p>
	<p>LinknLink eHub Universal Remote: Voice Command Guide</p> <p>Comprehensive guide to using voice commands with the LinknLink eHub 5-in-1 Universal Remote for controlling TVs, smart appliances, audio systems, and more via Alexa and Google Assistant.</p>
	<p>LinknLink Smart Home Bridge Quick Setup Guide</p> <p>Comprehensive quick setup guide for the LinknLink Smart Home Bridge, covering device setup, app installation, account creation, Wi-Fi configuration, and usage instructions. Includes product specifications, FCC compliance, and version history.</p>
	<p>LinknLink: Build Your AI Smart Home with Advanced IoT Solutions</p> <p>Explore LinknLink's comprehensive range of AI-powered smart home devices, including gateways, sensors, remotes, and accessories, designed for ultimate comfort, energy savings, and security.</p>