

Manuals+

[Q & A](#) | [Deep Search](#) | [Upload](#)

[manuals.plus](#) /

› [ATsafepro](#) /

› [ATsafepro Mechanical Tyre Pressure Gauge User Manual](#)

ATsafepro AS016

ATsafepro Mechanical Tyre Pressure Gauge User Manual

Model: AS016

INTRODUCTION

Thank you for choosing the ATsafepro Mechanical Tyre Pressure Gauge. This professional-grade tool is designed for accurate and reliable tire pressure measurement in a variety of vehicles, including cars, trucks, and motorcycles. Its robust mechanical design ensures consistent performance without the need for batteries. This manual provides essential information on the proper use, maintenance, and care of your new tyre pressure gauge to ensure optimal performance and longevity.

SAFETY INFORMATION

Always prioritize safety when working with vehicles and their components. Incorrect tire pressure can lead to unsafe driving conditions. Follow these guidelines:

- Ensure the vehicle is parked on a level surface with the parking brake engaged.
- Allow tires to cool before checking pressure for the most accurate reading.
- Do not over-inflate tires beyond the manufacturer's recommended pressure.
- Keep the gauge clean and free from debris to prevent damage and ensure accuracy.
- Store the gauge in a safe place away from extreme temperatures or direct sunlight.

PRODUCT OVERVIEW AND COMPONENTS

The ATsafepro Tyre Pressure Gauge is engineered for ease of use and durability. Familiarize yourself with its key components:

360° Swivel Brass Chuck

Makes it easy to view the dial clearly from any angle



Package Includes

Extend Nozzle: Come with an extended nozzle provide better sealing during test

Holds The Pressure:

On the gauge when off the valve until you choose to release it.

Enlarge Release Button

Enlarge Release Button makes the reduction more comfortable

Accurate Mechanical

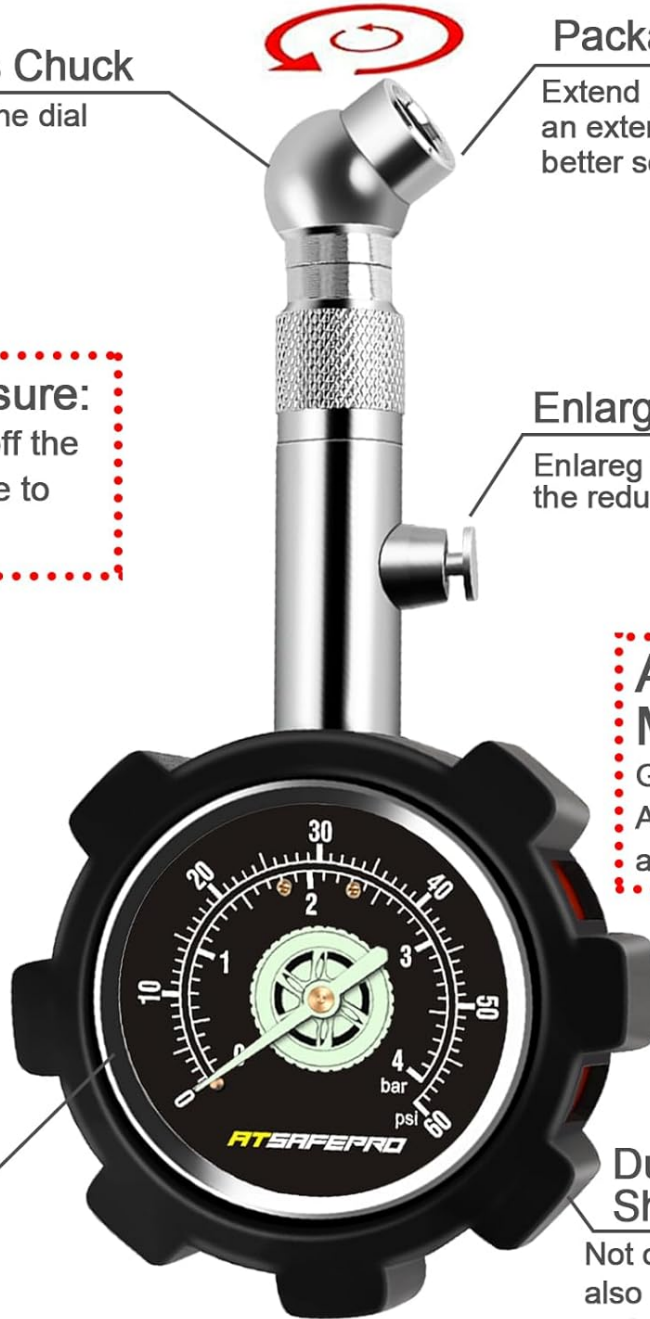
Gauge certified to ANSI B40.1 Grade B accuracy standard

1.5" Display

Makes for a Clearer dial and more accurate reading

Dual-Layer Protective Shock Guard

Not only feel more softer, but also provide a better cushioning and shock resistance when it drops



This image highlights the main features of the ATsafePro Tyre Pressure Gauge, including the 360° swivel brass chuck, the pressure-holding mechanism, the enlarged release button, the 1.5-inch glow-in-the-dark dial, and the dual-layer protective shock guard. It also notes its ANSI B40.1 certification for accuracy.

**Large
1.5" Face**

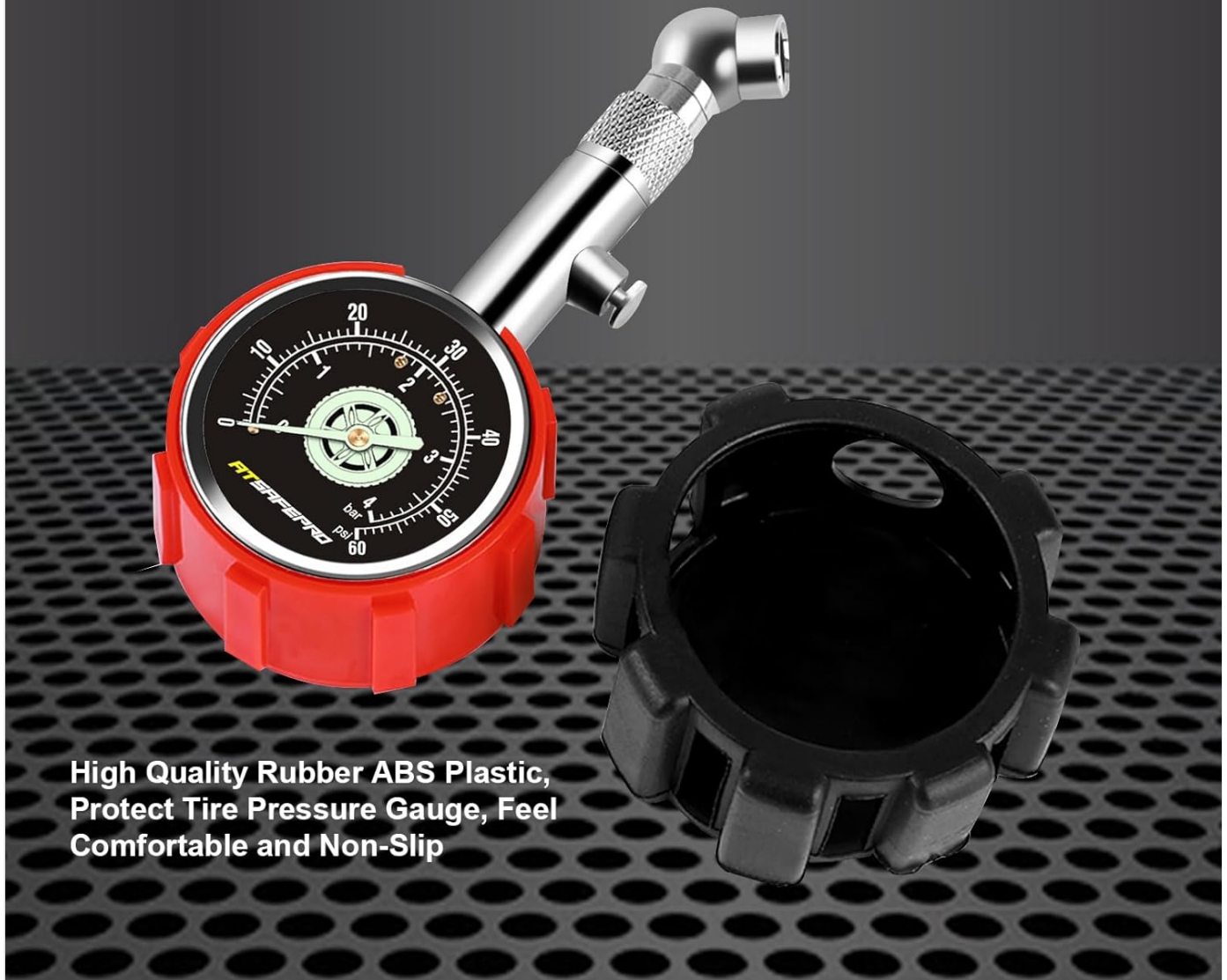
Glow in the Dark



EASY TO READ

A close-up view of the gauge's 1.5-inch dial, demonstrating its glow-in-the-dark capability for easy reading in low-light conditions. The dial clearly displays pressure readings in both PSI and Bar.

Dual-Layer Protective Shock Guard



**High Quality Rubber ABS Plastic,
Protect Tyre Pressure Gauge, Feel
Comfortable and Non-Slip**

This image shows the ATsafepro Tyre Pressure Gauge alongside its dual-layer rubber protective cover, emphasizing the high-quality ABS plastic material designed for comfort, non-slip grip, and enhanced durability against accidental drops.

- **1.5-inch Glow-in-the-Dark Dial:** Large, easy-to-read display with dual scales (PSI and Bar) that illuminates for visibility in low light.
- **360° Swiveling Brass Chuck:** Allows for easy connection to tire valves from any angle, ensuring a secure seal and accurate reading.
- **Pressure Hold Feature:** The gauge holds the pressure reading until the release button is pressed, allowing for convenient viewing.
- **Enlarged Release Button:** Designed for comfortable and easy pressure release.
- **Dual-Layer Rubber Protective Cover:** Provides enhanced protection against impacts and offers a comfortable, non-slip grip.
- **Robust Brass Construction:** Ensures durability and long-term reliability.

The ATsafepro Mechanical Tyre Pressure Gauge requires no batteries or complex setup. It is ready for use right out of the box.

1. Unpack the tyre pressure gauge from its packaging.
2. Ensure the protective rubber cover is securely fitted around the gauge dial.
3. Familiarize yourself with the chuck and the pressure release button.

OPERATING INSTRUCTIONS

Follow these steps to accurately measure your tire pressure:

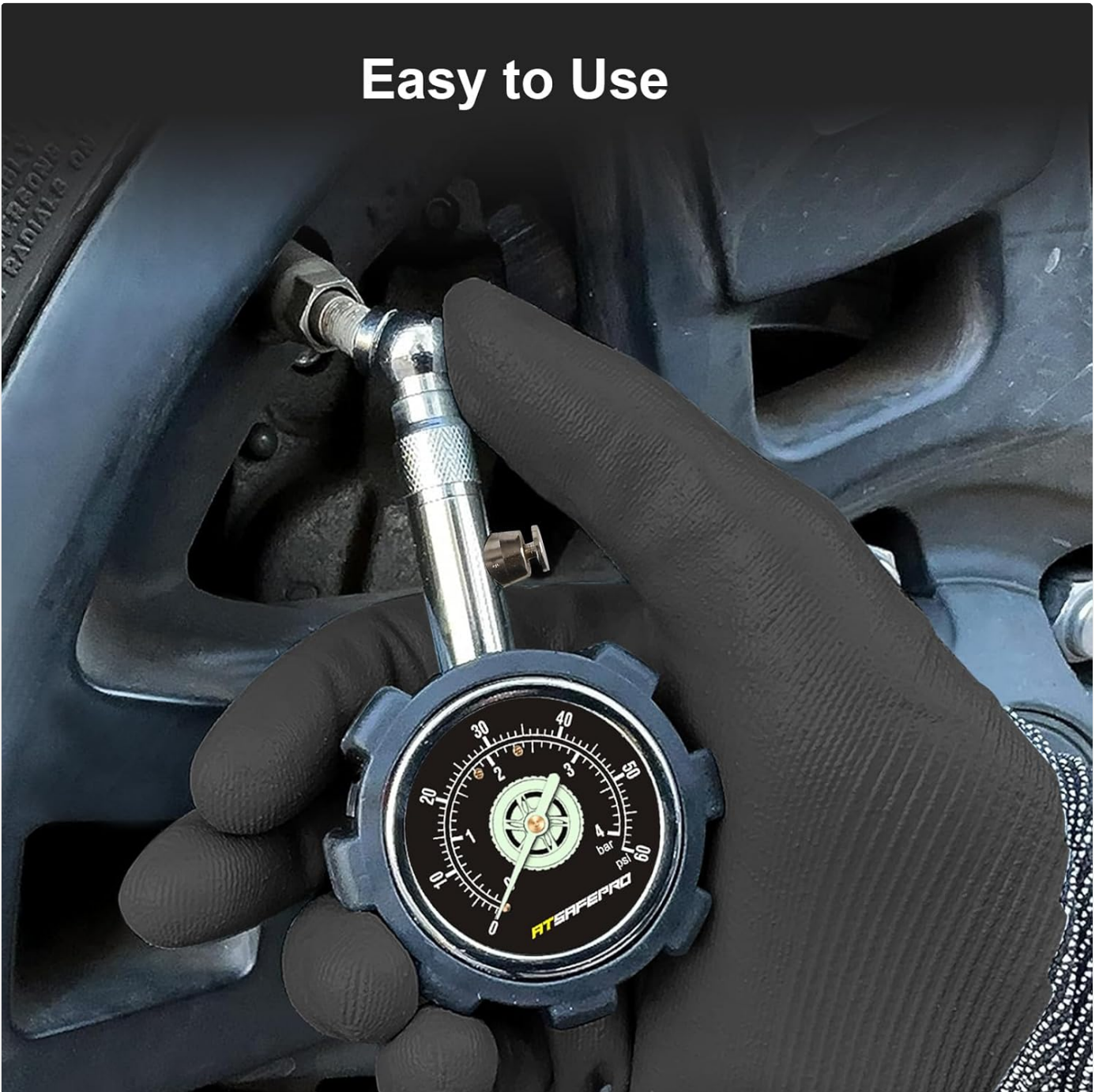
1. **Prepare the Tire:** Ensure the tire is cool. Remove the valve cap from the tire stem.
2. **Attach the Gauge:** Firmly press the chuck of the ATsafepro gauge onto the tire valve stem. You may hear a slight hiss of air; this is normal. Ensure a tight seal to get an accurate reading. The 360° swiveling chuck allows for easy attachment from various angles.
3. **Read the Pressure:** Once the gauge is securely attached, the needle on the dial will move to indicate the tire pressure. The gauge will hold this reading even after it is removed from the valve stem.
4. **Record the Reading:** Note the pressure reading from the dial. The gauge displays pressure in both PSI (pounds per square inch) and Bar.
5. **Release Pressure (if needed):** If the tire pressure is too high, press the enlarged release button on the side of the gauge to slowly release air until the desired pressure is reached. Re-check the pressure after releasing air.
6. **Remove and Replace:** Remove the gauge from the valve stem and replace the valve cap securely.
7. **Reset Gauge:** Press the release button to reset the gauge needle to zero before the next measurement.

Single Hand Control
Pressure Quickly



This image demonstrates the single-hand control and quick pressure checking capability of the gauge, showing it being held near a tire valve.

Easy to Use



A clear depiction of how to easily attach the ATsafepro Tyre Pressure Gauge to a tire valve for measurement.

Regularly checking tire pressure is crucial for safety, fuel efficiency, and extending tire life. The ATsafepro gauge is suitable for a wide range of vehicles:

Wide Application



This image illustrates the wide application of the ATsafepro Tyre Pressure Gauge, suitable for various vehicle types including bicycles, motorcycles, cars, and trucks.

MAINTENANCE

To ensure the longevity and accuracy of your ATsafepro Tyre Pressure Gauge, follow these simple maintenance tips:

- **Cleaning:** Wipe the gauge with a soft, dry cloth after each use to remove dirt and grime. Do not use harsh chemicals or abrasive cleaners.
- **Storage:** Store the gauge in a clean, dry place, away from direct sunlight and extreme temperatures. The protective rubber cover helps guard against accidental damage.
- **Avoid Drops:** While designed with a shock guard, repeated drops can affect the gauge's calibration. Handle with care.
- **Check for Damage:** Periodically inspect the chuck and the gauge body for any signs of wear or damage. If the chuck appears worn or leaks air, it may affect accuracy.

TROUBLESHOOTING

If you encounter issues with your ATsafepro Tyre Pressure Gauge, consider the following:

Problem	Possible Cause	Solution
Inaccurate Reading	Improper seal with valve stem; gauge is dirty; gauge has been dropped/damaged.	Ensure chuck is firmly pressed onto valve stem; clean the gauge; if damaged, consider replacement.
Air Hissing During Measurement	Chuck not fully seated on valve stem; worn valve stem or chuck seal.	Press the chuck more firmly; inspect valve stem for damage; if issue persists, the chuck may be worn.
Needle Does Not Return to Zero	Pressure release button not fully pressed; internal mechanism issue.	Ensure the release button is fully depressed; if it remains stuck, contact customer support.

For further assistance, please refer to the Warranty and Support section.

SPECIFICATIONS

Feature	Detail
Model Number	AS016
Measurement Range	4 bar / 60 psi
Measurement Accuracy	+/-0.1psi (ANSI B40.1 Certified)
Dial Size	1.5 inches
Material	Brass, Powder Coating, Rubber (Protective Cover)
Product Dimensions	11.5 x 5.5 x 3 cm
Item Weight	100 g
Batteries Required	No
Country of Origin	China

WARRANTY AND SUPPORT

The ATsafepro Tyre Pressure Gauge comes with a **1-year warranty** from the date of purchase, covering manufacturing defects. This warranty does not cover damage caused by misuse, accidents, unauthorized modifications, or normal wear and tear.

For warranty claims, technical support, or any questions regarding your product, please contact ATsafepro customer service:

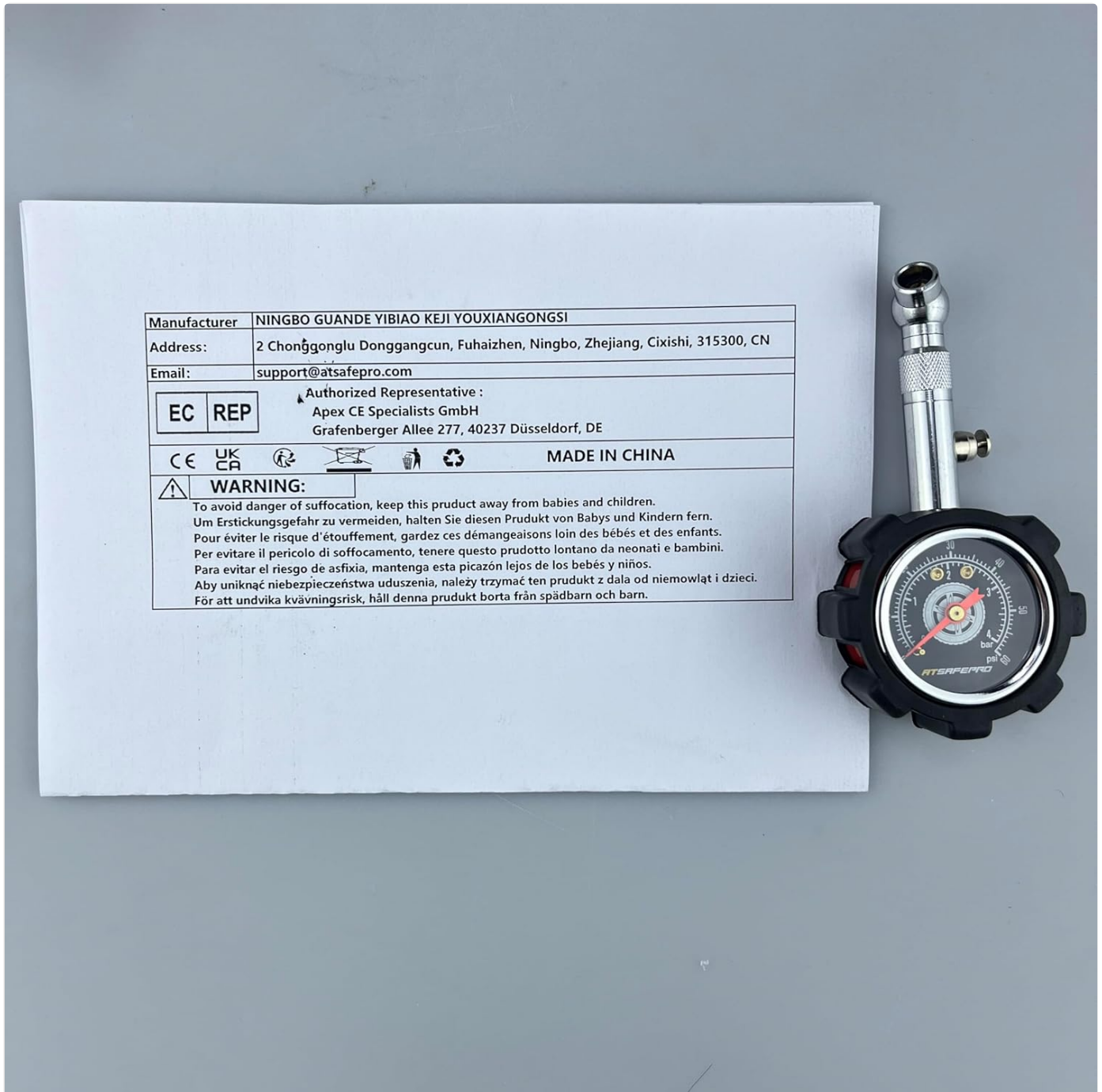
Email: support@atsafepro.com

Manufacturer: NINGBO GUANDE YIBIAO KEJI YOUXIANGONGSI

Address: 2 Chonggonglu Donggangcun, FuhaiZhen, Ningbo, Zhejiang, Cixi, 315300, CN

Authorized Representative (EU): Apex CE Specialists GmbH, Grafenberger Allee 277, 40237 Dusseldorf, DE

Please have your model number (AS016) and purchase date ready when contacting support.



This image displays the product packaging, which includes manufacturer contact information, address, and important warning labels regarding product safety and disposal.