

[Manuals.plus](#) /

> [TNW](#) /

> TNW Selfie Stick Tripod with Fill Light User Manual

TNW Q11S

TNW Selfie Stick Tripod with Fill Light

Model: Q11S

INTRODUCTION

The TNW Q11S Selfie Stick Tripod with Fill Light is a versatile 2-in-1 device designed for mobile photography and videography. It functions as both a portable selfie stick and a stable tripod, featuring an integrated adjustable LED fill light and a detachable wireless remote control. This manual provides detailed instructions for setting up, operating, and maintaining your device to ensure optimal performance.

PRODUCT OVERVIEW

Familiarize yourself with the components of your TNW Q11S Selfie Stick Tripod.



Figure 1: Overview of the TNW Q11S Selfie Stick Tripod, showing its dual functionality as a selfie stick and a tripod, along with the wireless remote control.

Super lightweight portable

(101)



Weight 130g



Fold 152mm



Figure 2: The compact and lightweight design of the TNW Q11S, demonstrating its portability when folded to 152mm and weighing only 130g.

Key Components:

- **Phone Holder:** Securely holds your smartphone.
- **Extendable Rod:** Allows for adjustable length for selfie stick or tripod use.
- **Tripod Base:** Provides stability when used as a tripod.
- **LED Fill Light:** Integrated light source with adjustable color temperature and brightness.
- **Bluetooth Remote Control:** Detachable remote for hands-free operation.

SETUP

1. Unfolding the Device:

1. Gently pull the top phone holder upwards to extend the main rod.
2. For tripod use, spread the three legs at the bottom until they lock into place, forming a stable base.

2. Attaching Your Smartphone:

1. Open the phone holder clamps.
2. Carefully place your smartphone into the holder, ensuring it is centered and secure. The holder supports phones between 2.5 inches and 3.7 inches wide.
3. Adjust the phone holder's angle as needed. It supports 360° rotation and 225° tilt for horizontal or vertical shooting.



Figure 3: Demonstrates the flexibility of the phone holder for both horizontal and vertical shooting orientations.

3. Pairing the Bluetooth Remote Control:

1. Locate the detachable Bluetooth remote control, usually integrated into the handle. Slide it out to remove.
2. Press and hold the button on the remote until the indicator light flashes, indicating it is in pairing mode.
3. On your smartphone, go to Bluetooth settings and search for new devices.
4. Select "AB Shutter3" (or similar name) from the list of available devices to pair. The indicator light will stop flashing once successfully paired.
5. The remote control has an effective range of up to 10 meters (33 feet).

WIRELESS REMOTE CONTROL



Figure 4: The detachable Bluetooth remote control, showing its hidden storage within the handle and its 10-meter operating range.

OPERATING INSTRUCTIONS

Using as a Selfie Stick:

1. Ensure the tripod legs are folded and secured.
2. Extend the rod to your desired length, up to 760mm (30 inches).
3. Hold the handle firmly and use the Bluetooth remote to capture photos or start videos.



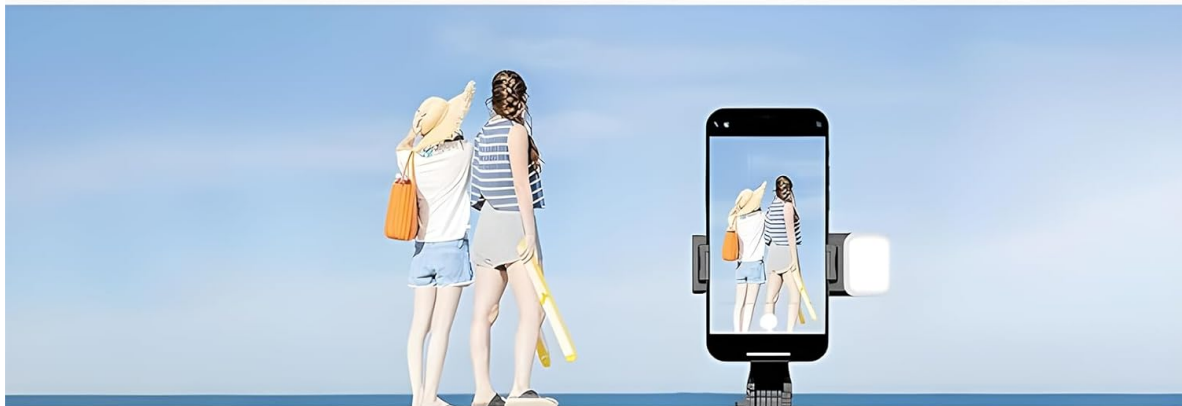
Figure 5: The selfie stick fully extended to its maximum length of 760mm, ready for use.

Using as a Tripod:

1. Spread the tripod legs completely until they are stable on a flat surface.
2. Extend the rod to the desired height.
3. Place the tripod on a stable surface. Use the Bluetooth remote for hands-free shooting.

STABLR TRIPOD

Professional reinforcement design



Antiskid silicone pad



Stable tripod for storage

Figure 6: The stable tripod base featuring antiskid silicone pads for enhanced grip and stability on various surfaces.

Using the LED Fill Light:

1. Press the power button on the fill light to turn it on.
2. Press the button repeatedly to cycle through the 3 color temperature modes (Warm light, Natural light, White light).
3. Long press the button to adjust the brightness level (0-100%). There are 9 brightness levels available.

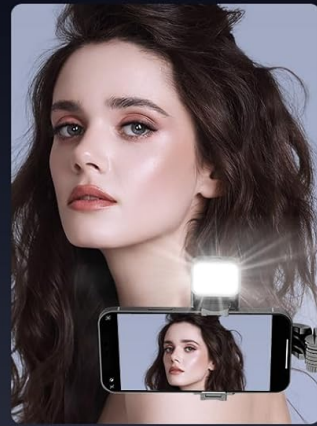
Three Color Fill Light



Warm light



Natural light



White light

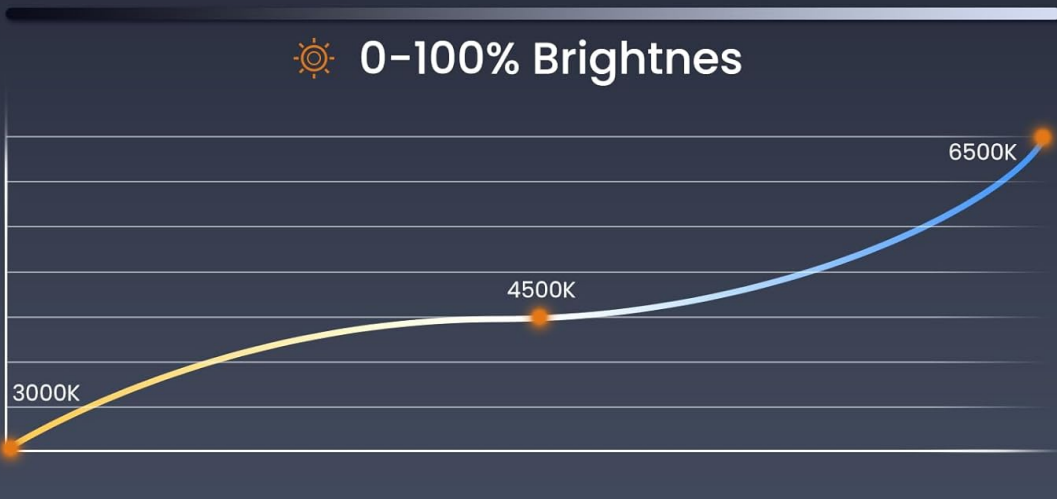


Figure 7: Illustration of the three color temperature options (Warm, Natural, White) and the 0-100% brightness adjustment range of the integrated LED fill light.

Common Usage Scenarios:

- **Selfie:** Extend the stick and use the remote for perfect self-portraits.
- **Live Streaming/Vlogging:** Set up as a tripod for stable video recording.
- **Video Calls:** Use as a desktop stand for hands-free communication.
- **Group Photos:** Position the tripod and use the remote to include everyone.



Selfie



Live streaming



Watch TV



Full-body shot

Figure 8: Examples of how the TNW Q11S can be used for different activities such as taking selfies, live streaming, watching videos, and capturing full-body shots.

MAINTENANCE

- **Cleaning:** Wipe the device with a soft, dry cloth. Do not use abrasive cleaners or solvents.
- **Storage:** When not in use, fold the device completely and store it in a cool, dry place away from direct sunlight and extreme temperatures.
- **Battery Care (Remote):** If the remote control is not used for an extended period, remove its battery

to prevent leakage.

TROUBLESHOOTING

Q: The Bluetooth remote control does not pair with my phone.

A: Ensure the remote is charged (if applicable) and in pairing mode (indicator light flashing). Make sure your phone's Bluetooth is enabled and try restarting both the remote and your phone. Check if "AB Shutter3" appears in your Bluetooth device list.

Q: The fill light is not turning on or is dim.

A: Check if the fill light has sufficient battery. Ensure it is fully charged. Press the power button firmly to turn it on and cycle through brightness levels.

Q: The selfie stick/tripod feels unstable.

A: Ensure all extendable sections are fully locked into place. For tripod use, make sure the legs are fully spread and placed on a flat, stable surface. The antiskid silicone pads on the tripod base should be making full contact with the surface.

SPECIFICATIONS

Feature	Detail
Model Number	Q11S
Weight	140 Grams (approx. 4.9 oz)
Folded Size	152mm (approx. 6 inches)
Extended Length	Up to 760mm (approx. 30 inches)
Compatible Devices	Smartphones (iOS and Android), 2.5in-3.7in width
Bluetooth Remote Range	Up to 10 meters (33 feet)
Fill Light Modes	3 Color Temperatures, 9 Brightness Levels
Material	Aluminum Alloy (rod), Antiskid Silicone (base)

WARRANTY AND SUPPORT

For warranty information and customer support, please refer to the product packaging or contact TNW customer service directly. Keep your purchase receipt as proof of purchase.

Manufacturer: TNW