

ORICO CD3520

ORICO MetaBox Mini NAS Storage User Manual

Model: CD3520

Brand: ORICO

1. INTRODUCTION

The ORICO MetaBox Mini NAS Storage (Model CD3520) is a personal media center designed for centralized storage and management of your digital content. It supports up to 22TB of storage, allowing you to consolidate videos, audio, and photos from various devices like smartphones, tablets, and computers. This device offers remote access via the Weline APP, supports Samba and DLNA protocols for seamless sharing, and provides a secure private cloud environment for your data.



Figure 1: The ORICO MetaBox Mini NAS Storage device.

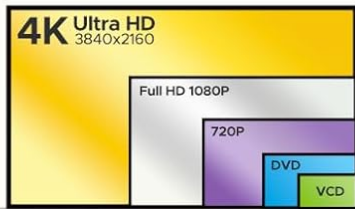
2. PACKAGE CONTENTS

Verify that all the following items are included in your package:

- ORICO MetaBox Mini NAS Storage Unit (CD3520)
- Power Adapter (DC 12V 3A)
- USB-A to USB-C 3.2 Cable
- Ethernet Cable (Cat 6E)
- Rubber Feet (2 pieces)
- Screwdriver
- Mounting Screws (for 2.5-inch and 3.5-inch drives)

Powerful Performance, Smooth Experience

Watch videos without delays, enjoy 4k ultra experience



4x 1080P pixels



Figure 2: All components included in the ORICO MetaBox Mini NAS package.

3. SETUP

3.1. Hardware Installation

1. **Prepare the Drive:** The MetaBox Mini NAS supports both 2.5-inch and 3.5-inch SATA hard drives or SSDs. Ensure your drive is compatible.

2. **Open the Enclosure:** Gently remove the front cover of the NAS unit. It is held by magnets.
3. **Slide Out the Drive Tray:** Locate the small tab at the bottom of the drive bay. Pull this tab to release and slide out the internal drive tray.
4. **Install the Drive:** Secure your 2.5-inch or 3.5-inch drive into the tray using the provided screws and screwdriver. Ensure the SATA connectors align correctly.
5. **Insert the Drive Tray:** Slide the loaded drive tray back into the NAS enclosure until it clicks securely into place.
6. **Replace the Front Cover:** Reattach the magnetic front cover.
7. **Attach Rubber Feet:** Place the two rubber feet onto the designated slots on the bottom of the NAS unit to ensure stability.

Video 1: A short demonstration of installing a hard drive into the ORICO MetaBox Mini NAS (Model CD3520).

3.2. Initial Connection and App Setup

1. **Connect Power:** Plug the power adapter into the DC 12V 3A port on the back of the NAS unit and then into a power outlet.
2. **Connect to Network:** Connect one end of the Ethernet cable to the Gigabit Ethernet port on the NAS and the other end to your router or network switch.
3. **Power On:** Press the power button on the back of the NAS unit. The status indicator lights on top should illuminate.
4. **Download Weline App:** Search for "Weline" in your mobile device's app store (Google Play Store for Android or Apple App Store for iOS) and install the application.
5. **Register/Login:** Open the Weline App and follow the on-screen instructions to register a new account or log in if you already have one.
6. **Add Device:** Within the Weline App, select the option to add a new device. You may be prompted to scan a QR code located on the NAS unit or its packaging, or to search for the device on your local network.
7. **Format Drive:** Once connected, the app may prompt you to format the newly installed drive. Confirm to proceed with formatting, which will prepare the drive for use with the NAS.

Up to 22TB Storage Expansion

Multi-device centralized storage with video, audio, and picture categorization



Figure 3: The ORICO MetaBox Mini NAS supports up to 22TB storage expansion and centralized management from various devices.

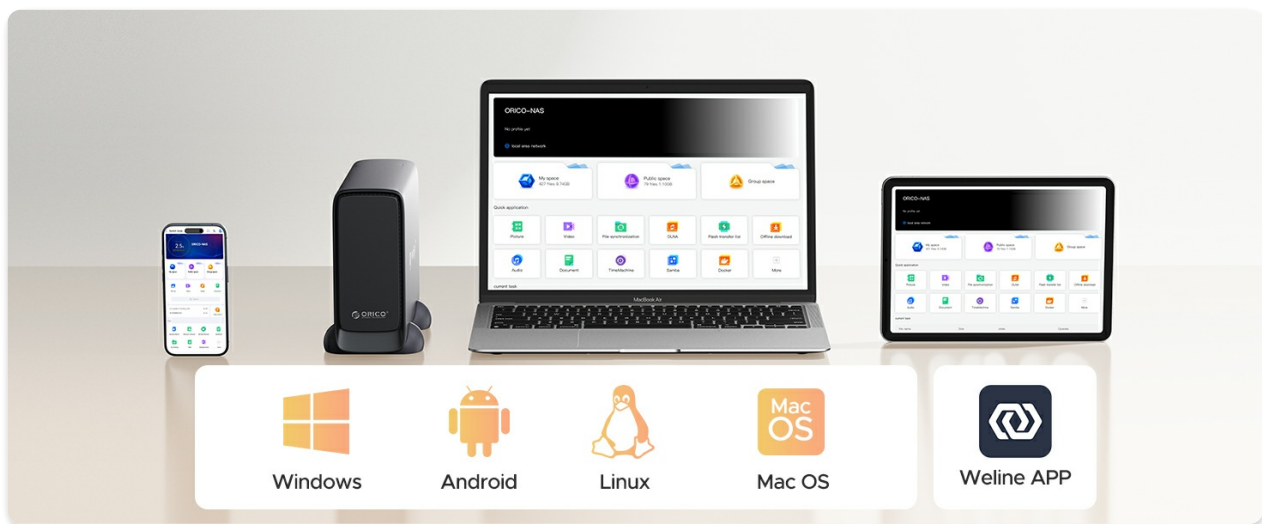


Figure 4: Step-by-step guide for Weline App setup, from hard drive installation to app connection.

4. OPERATING THE METABOX MINI NAS

4.1. Weline App Features

The Weline App serves as your primary interface for managing the MetaBox Mini NAS. It allows you to:

- **Personal Media Center:** Centralize and categorize videos, audio, and photos from all your devices.
- **Remote Access:** Access your stored media remotely via the Weline App, enabling 4K experience on the go.
- **Sharing:** Share files with friends and family by setting up personal, public, and group spaces.
- **Automatic Backup:** Configure automatic backups from your connected devices to the NAS.
- **File Management:** Browse, upload, download, and organize files and folders directly within the app.

APP Remote Access

Enjoy the ultimate 4K experience anywhere.



NAS at Home



Figure 5: Enjoy remote access to your media library through the Weline App, even while traveling.

Instant Sharing

Share happiness times with friends and family anytime.



Figure 6: The Weline App facilitates instant sharing of media with friends and family.

Video 2: An overview of the ORICO NAS Storage as a personal media library, demonstrating its capabilities.

4.2. Samba and DLNA Protocols

The MetaBox Mini NAS supports Samba and DLNA protocols, allowing for broader compatibility and access from various devices on your network.

- **Samba (SMB/CIFS):** Enables network file sharing with Windows, macOS, and Linux computers. You can map the NAS as a network drive for easy access.
- **DLNA:** Allows you to stream media content from the NAS to DLNA-compatible devices such as smart TVs, gaming consoles, and media players.



Figure 7: Steps 1-3 for mapping a network drive in Windows using the Samba function.

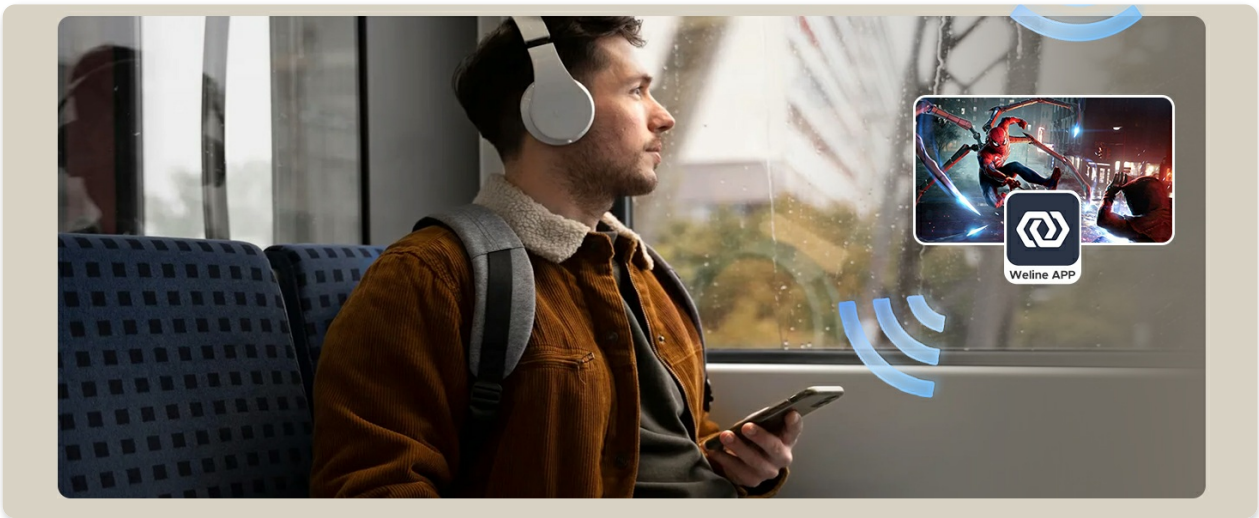


Figure 8: Steps 4-6 for mapping a network drive in Windows using the Samba function.

<p>Step 1</p> <p>Push the hard drive into the NAS</p>	<p>Step 2</p> <p>Search "Weline" in IOS/Android Store or download in website:weline.io</p>	<p>Step 3</p> <p>Scan code to connect device</p>	<p>Step 4</p> <p>Enter Weline App and start the storage journey</p>

Figure 9: Steps 1-4 for mapping a network drive in macOS using the Samba function.



Figure 10: Alternative view of steps for mapping a network drive in macOS using the Samba function.

5. MAINTENANCE

5.1. Cooling and Heat Dissipation

The ORICO MetaBox Mini NAS is designed with a cooling fan and an aluminum alloy casing to ensure efficient heat dissipation, maintaining optimal operating temperatures for your hard drive and the device itself.

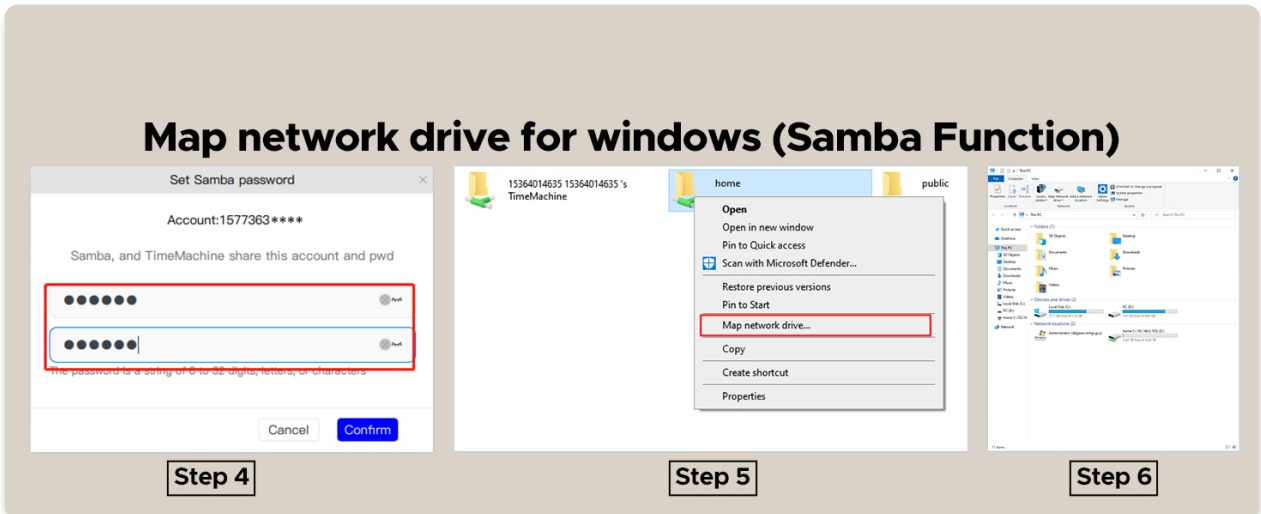


Figure 11: Internal cooling fan and aluminum alloy design for effective heat dissipation.

5.2. Indicator Lights

The NAS unit features indicator lights on its top surface to provide status information:

- **Blue Light:** Indicates online status and normal operation.
- **Red Light:** Indicates offline status or a potential issue.



Figure 12: Disk and Status indicator lights, along with the rear panel ports (USB 3.2 Gen1 Type-C, Reset, DC 12V 3A, 1 Gigabit Ethernet, Power Start).

6. TROUBLESHOOTING

If you encounter issues with your ORICO MetaBox Mini NAS, consider the following common troubleshooting steps:

- **Setup Difficulties:** Ensure all cables (power, Ethernet) are securely connected. Verify that the hard drive is correctly installed and seated in the tray. If the drive is new, it must be formatted via the Weline App.
- **Network Connectivity:** Check your router's status and ensure the NAS is receiving an IP address. Confirm that your mobile device or computer is on the same local network as the NAS for initial setup and local access.
- **Remote Access Issues:** Cross-region transmission speeds can vary (typically 1-2MB/s). If you experience slow speeds, ensure your internet connection is stable. The Weline App may offer accelerated traffic options for purchase if needed.
- **App Functionality:** If the Weline App is not recognizing the device or showing incorrect status, try restarting the app, restarting the NAS unit, or checking for app updates.
- **Samba/DLNA Access:** Ensure the Samba or DLNA service is enabled within the Weline App settings. Verify correct network path or device discovery settings on your computer or media player.
- **Data Security Concerns:** The device uses SDVN technology for encrypted direct transmission between your devices and the NAS, bypassing cloud servers for enhanced privacy.
- **Performance:** The NAS is equipped with a quad-core CPU and DDR4 memory for fast decoding and file operations. If performance is slow, check your network speed and ensure the NAS is not under heavy load.

7. SPECIFICATIONS

Feature	Specification
---------	---------------

Model Number	CD3520
Product Dimensions	8.03 x 5.55 x 3.35 inches
Item Weight	2.86 pounds
Material	Aluminum, Acrylonitrile Butadiene Styrene (ABS)
Compatible Drive Type	3.5-inch HDD (Diskless)
Max Capacity	Up to 22TB
Network Interface	1 Gigabit Ethernet
Data Interface	USB 3.2 Gen1 Type-C
Compatible Devices	Laptop, Desktop, Tablet, Smartphone
Supported Protocols	Samba, DLNA
Operating System Compatibility	Windows, Android, Linux, Mac OS (via Weline App)


8. WARRANTY AND SUPPORT






For warranty information and technical support, please refer to the official ORICO website or contact ORICO customer service directly. Details regarding warranty periods and support channels are typically provided with your product documentation or on the manufacturer's website.

You can visit the ORICO Store on Amazon for more information: [ORICO Store](#)

© 2024 ORICO. All rights reserved.

Related Documents - CD3520

	<p>ORICO CD2510/CD3510 User Manual</p> <p>User manual for the ORICO CD2510 and CD3510 networkable hard drive enclosures, covering product illustration, installation, device connection, startup/shutdown, light status, client download and installation, registration, login, and device access.</p>
---	--

	<p>ORICO Personal Cloud Storage User Manual: CD2510 & CD3510 NAS Devices</p> <p>Comprehensive user manual for ORICO CD2510 and CD3510 Personal Cloud Storage devices, covering installation, network setup, mobile access, hard disk modes, and troubleshooting.</p>
	<p>ORICO 3529RU3/3549RU3/3559RU3 RAID Hard Drive Enclosure User Manual</p> <p>Comprehensive user manual for ORICO 3529RU3, 3549RU3, and 3559RU3 external RAID hard drive enclosures. Covers features, specifications, installation, RAID configurations (RAID 0, 1, 3, 5, 10, SPAN, Clone, PM/Normal), software management with ORICO HW RAID Manager, and troubleshooting.</p>
	<p>ORICO MetaBox Pro HS200/HS500 User Manual</p> <p>User manual for the ORICO MetaBox Pro HS200 and HS500, covering product specifications, installation, setup, and usage.</p>
	<p>ORICO 95RU3 Series 3.5 Inch External HDD Enclosure User Manual</p> <p>User manual for the ORICO 95RU3 Series 3.5 Inch External HDD Enclosure, detailing product introduction, specifications, features, setup, RAID configuration, and troubleshooting.</p>
	<p>ORICO 95U3 Series 3.5 Inch External HDD Enclosure User Manual</p> <p>User manual for the ORICO 95U3 Series 3.5 Inch External HDD Enclosure, covering product introduction, specifications, features, installation, and troubleshooting.</p>