

manuals.plus /

› [Ilano](#) /

› [Ilano RGB Gaming Laptop Cooling Pad - User Manual](#)

Ilano V12

Ilano RGB Gaming Laptop Cooling Pad - User Manual

Model: V12

INTRODUCTION

Thank you for choosing the Ilano RGB Gaming Laptop Cooling Pad, Model V12. This cooling pad is designed to provide efficient and quiet cooling for your laptop, enhancing performance and extending its lifespan. Featuring a powerful 14cm turbo fan, customizable RGB lighting, an intuitive HD LED display, and an ergonomic design with multiple USB ports, it offers a comprehensive solution for managing laptop temperatures during intensive use.



Image: The Ilano RGB Gaming Laptop Cooling Pad in black, with a gaming laptop positioned above it, illustrating the cooling airflow. The pad features vibrant RGB lighting along its edges.

PACKAGE CONTENTS

- Ilano RGB Gaming Laptop Cooling Pad (Model V12)
- USB-A to USB-A Cable (for power and data)
- User Manual (this document)

SETUP GUIDE

1. Unpacking and Placement

1. Carefully remove the cooling pad from its packaging.
2. Place the cooling pad on a stable, flat surface.
3. Adjust the integrated stand to your desired ergonomic height. The cooling pad offers adjustable height settings to

improve viewing comfort and posture.

Ergonomisch höhenverstellbar

Erhöht und neigt das Kühlpad, um die perfekte Betrachtungsposition zu erreichen.



Das ständige Starren auf den Computer über einen längeren Zeitraum kann leicht zu Müdigkeit führen.



Eine bequeme Haltung kann dazu beitragen, dass Sie sich viel energiegeladener fühlen.



58mm

Image: Side view of the Ilano cooling pad demonstrating its adjustable height mechanism, highlighting ergonomic benefits for improved posture and reduced neck strain.

2. Power Connection

4. Connect one end of the provided USB-A to USB-A cable to the "DC IN" port on the cooling pad.
5. Connect the other end of the USB-A cable to an available USB port on your laptop or a compatible USB power

adapter (not included). The cooling pad will power on automatically.

3. Laptop Placement

6. Carefully place your laptop on the cooling pad. Ensure the laptop's intake vents align with the cooling pad's fan for optimal airflow.
7. Utilize the anti-slip baffles to secure your laptop in place, preventing it from sliding, especially when the pad is inclined.

OPERATING INSTRUCTIONS

1. Power On/Off

- To turn the cooling pad on or off, touch and hold the power button (usually marked with a power icon) for 2 seconds.

2. Fan Speed Control and Cooling Performance

- The cooling pad features an HD LED display that shows the current fan speed (RPM).
- Use the dedicated touch buttons or scroll wheel (if available) to adjust the fan speed. The fan offers stepless speed control, allowing precise adjustment for optimal cooling and noise balance.
- For maximum cooling performance, increase the fan speed. For quieter operation, reduce the fan speed. The 14cm turbo fan combined with the sealed foam gasket ensures dynamic 360-degree cooling, capable of significantly reducing laptop temperatures.

Ultra leistungsstarker Booster Turbo-Lüfter

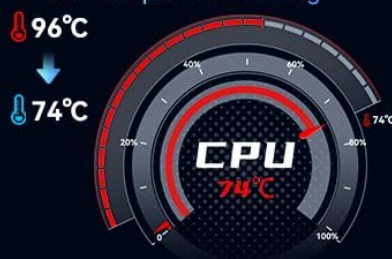
Effiziente Kühlung, besiegt hohe Temperaturen



* : Alle Daten stammen aus dem Ilano-Labor

Temperaturerkennungsdiagramm
aus tatsächlichen Tests

Tatsächliche
CPU-Temperaturmessung



Tatsächliche
GPU-Temperaturmessung



Externe Tastaturtemperatur

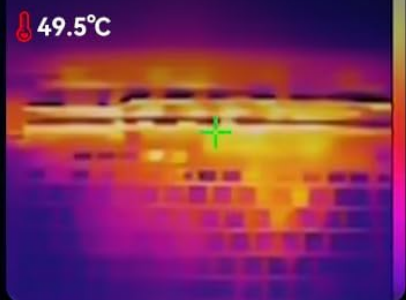


Image: An overhead view of the Ilano cooling pad's powerful turbo fan, illustrating the airflow and its effectiveness in dissipating heat from a laptop, with temperature readings shown on a screen.

Hochauflösendes LED-Display

Visualisierungsdesign, Echtzeitanzeige von
Drehzahl und allen Vorgängen



Image: Close-up of the Ilano cooling pad's control panel, featuring an HD LED display that shows the fan's RPM and touch-sensitive buttons for power, mode, RGB control, and fan speed adjustment.

3. RGB Lighting Control

- The cooling pad is equipped with RGB light bars offering 4 modes and 10 color options.
- Press the 'M' button to cycle through different RGB lighting modes.
- Use the right arrow button (or similar) to change RGB colors within a mode.

- To turn off the RGB lighting, touch and hold the 'M' button for 2 seconds.
- The cooling pad features a memory function that retains your last RGB setting upon power-off.

Steuerbare RGB-Beleuchtung Ein Tastendruck, um zum Gaming Setup-Thema zu passen

Berührungsempfindliche Stummschalttaste



4 statische Vollfarben

Dynamischer Farbverlauf
mit 4 Farben

Statische 4 Farben Dynamik

Eine Farbe Dynamik

Image: The llano cooling pad displaying its vibrant RGB lighting, with an emphasis on the touch controls for adjusting light modes and colors to match a gaming setup.

4. USB Hub Functionality

- The cooling pad includes 1 to 3 USB ports (depending on the specific model) that function as a USB hub.

- These ports allow you to connect peripherals such as a keyboard, mouse, or other USB devices, enhancing convenience.

MAINTENANCE

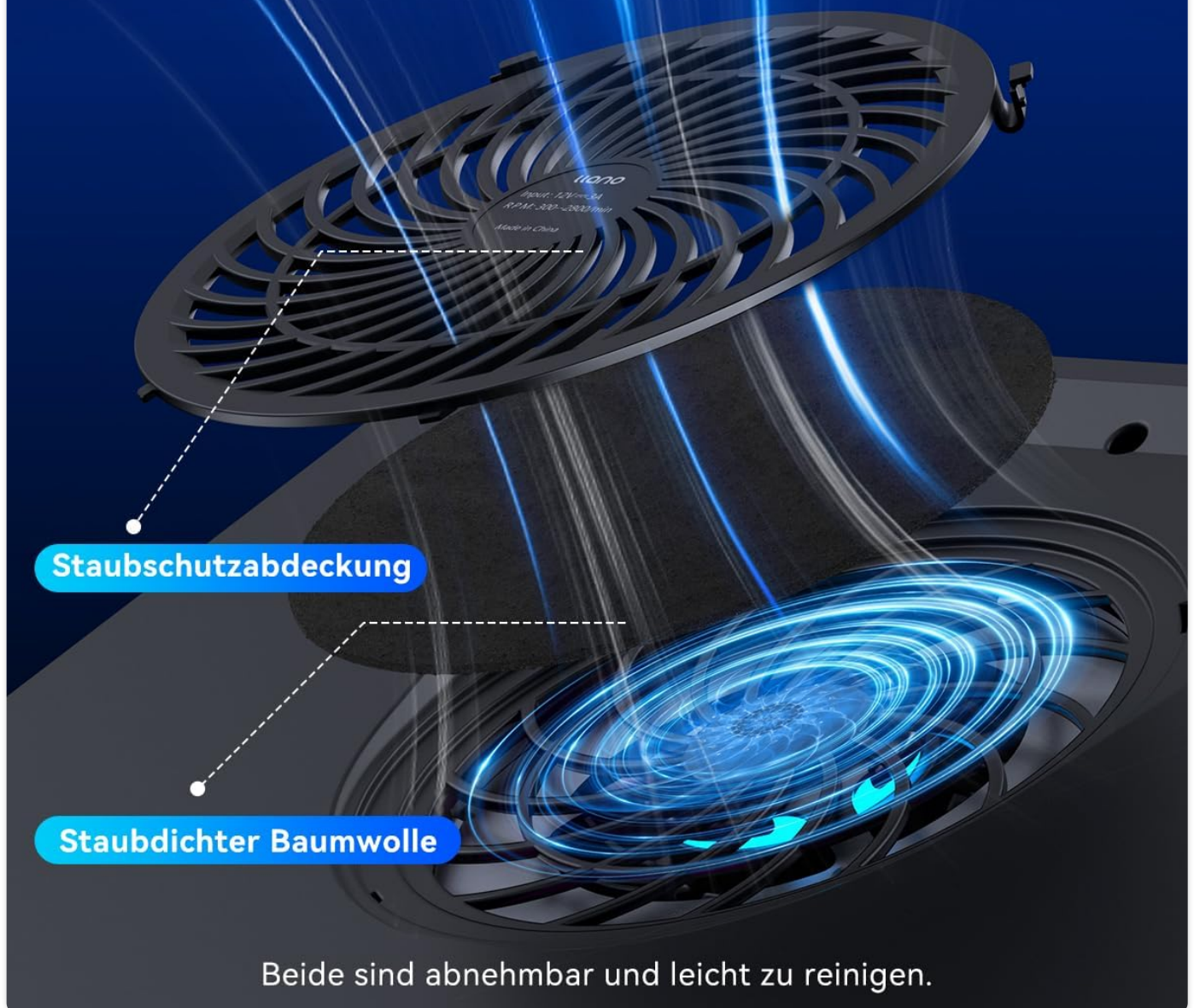
Cleaning the Dust Filter

The llano cooling pad is equipped with a dual dust protection system, including a dust protection cover and dust-proof cotton, both of which are removable for easy cleaning.

1. Ensure the cooling pad is powered off and disconnected from any power source.
2. Gently remove the dust protection cover and the dust-proof cotton from the fan area.
3. Clean the dust protection cover and cotton using a soft brush or a damp cloth. Allow them to dry completely before reinstallation.
4. Wipe the exterior of the cooling pad with a soft, dry cloth. Do not use abrasive cleaners or solvents.
5. Reinstall the dust protection cover and cotton once they are dry.

Doppelte Staubschutzmaßnahme

Reduziert Staubansammlungen signifikant
und gewährleistet die beste Kühlleistung.



Beide sind abnehmbar und leicht zu reinigen.

Image: Exploded view of the Ilano cooling pad's fan area, illustrating the removable dust protection cover and the underlying dust-proof cotton for easy cleaning and maintenance.

TROUBLESHOOTING

Problem	Possible Cause	Solution
---------	----------------	----------

Problem	Possible Cause	Solution
Cooling pad does not power on.	No power supply; loose cable connection.	Ensure the USB cable is securely connected to both the cooling pad and a powered USB port on your laptop or adapter. Try a different USB port or power source.
Fan is not spinning or is weak.	Low fan speed setting; dust accumulation; obstruction.	Increase the fan speed using the control buttons. Check for and remove any obstructions around the fan. Clean the dust filter as per the Maintenance section.
RGB lights are not working.	RGB lights turned off; mode selection issue.	Press the 'M' button to cycle through RGB modes. If off, touch and hold 'M' for 2 seconds to turn them on.
Excessive noise from the fan.	Fan operating at maximum speed; obstruction.	Reduce the fan speed. Check for any foreign objects obstructing the fan blades. Ensure the cooling pad is on a flat, stable surface.
Laptop still overheating.	Improper laptop placement; severe laptop internal heat issues.	Ensure laptop vents are aligned with the cooling pad's fan. Verify the sealing foam gasket is properly positioned. If issues persist, consult your laptop's manufacturer.

SPECIFICATIONS

Feature	Detail
Brand	Ilano
Model Number	V12
Color	Black
Cooling Method	Air Cooling
Number of Fans	1 (14cm Turbo Fan)
Material	Acrylonitrile Butadiene Styrene (ABS)
USB Ports	1-3 USB Hubs (varies by specific model)
Display	HD LED Display (for fan speed)
RGB Lighting	4 Modes, 10 Colors, with Memory Function
Control Type	Touch Buttons, Stepless Speed Control
Compatibility	Laptops over 15 inches (38.1 cm)

WARRANTY AND SUPPORT

Ilano is committed to providing high-quality products and excellent customer service.

- **180-Day Quality Guarantee:** Your Ilano cooling pad is covered by a 180-day quality guarantee from the date of

purchase.

- **Lifetime Technical Support:** Llano offers lifetime technical support for its products. Should you encounter any issues or have questions, please do not hesitate to contact us.
- **30-Day Free Returns:** Enjoy free returns within 30 days of purchase.
- **24/7 Fast Support:** Our support team is available around the clock to provide prompt assistance.

For support inquiries, please visit the official Llano website or contact their customer service directly through the platform where you purchased the product.



© 2024 Llano. All rights reserved.
For more information, visit llano.com

Related Documents - V12

	<p>V12 Clip-On Wireless Bluetooth Headset User Manual</p> <p>This manual provides instructions for the V12 clip-on wireless Bluetooth headset, including product structure, pairing, usage, operation list, product parameters, notes, warnings, and warranty information.</p>
	<p>LLANO S450 Smart Lock User Manual and FCC Information</p> <p>User manual and FCC compliance details for the LLANO S450 smart lock (model 2A77D-S450) by Shenzhen Green Giant Energy Technology Development Co.,Ltd. Includes installation guidance and regulatory information.</p>
	<p>Llano High-Speed Foldable Hair Dryer User Manual & Safety Guide</p> <p>Comprehensive user manual for the Llano High-Speed Foldable Hair Dryer, covering product features, safety instructions, how to use, cleaning, maintenance, troubleshooting, and warranty information.</p>
	<p>V12 Clip-On Wireless Bluetooth Headset User Guide</p> <p>User guide for the V12 clip-on wireless Bluetooth headset, detailing product structure, operation, and Bluetooth pairing instructions.</p>
	<p>Eaton IQ Products Catalog: Power Management and Electrical Protection Solutions</p> <p>Comprehensive catalog detailing Eaton's IQ Products line, featuring power meters, protective relays, and accessories for electrical distribution systems. Includes product specifications, selection guides, and replacement information.</p>

