



Manuals.plus /

› LemonNova /

› LemonNova Permanent Outdoor Lights Pro, Model 3231W-W-132: User Instruction Manual

LemonNova 3231W-W-132

LemonNova Permanent Outdoor Lights Pro

Model: 3231W-W-132 User Instruction Manual

1. INTRODUCTION

This manual provides detailed instructions for the installation, operation, and maintenance of your LemonNova Permanent Outdoor Lights Pro, Model 3231W-W-132. These smart LED eaves lights are designed for year-round outdoor use, offering customizable lighting options for various occasions.



Image 1.1: LemonNova Permanent Outdoor Lights Pro packaging and components.

2. SAFETY INFORMATION

- Ensure the power supply is disconnected before installation or maintenance.
- Do not attempt to cut the eave lights unless you are a qualified professional, as this may damage the product and void the warranty.
- Verify that all connections are secure and waterproof, especially for outdoor use.
- Operate the lights within the specified temperature range of -4°F to 140°F (-20°C to 60°C).
- Keep the control box in a location that allows for optimal WiFi reception.

3. PACKAGE CONTENTS

Verify that all items listed below are included in your package:

- String Lights (132 LED lights, 180ft total length)
- Controller
- Adapter

- Remote Control
- Clips
- Screws
- Extra Adhesive (VHB glue)
- Extension Cable (if applicable)
- User Manual



Image 3.1: Included components of the LemonNova Permanent Outdoor Lights Kit.

4. SETUP AND INSTALLATION

Follow these steps for proper installation:

1. **Mounting Location:** For an optimal wall washer effect, mount the lights 2-4 inches away from the wall.
2. **Surface Preparation:** Clean the mounting surface thoroughly before applying adhesive or clips.
3. **Installation Method:**
 - **Adhesive Installation:** Tear off the VHB gum from the back of each light and press it firmly onto the clean surface for 5 seconds.
 - **Screw Installation:** Use the provided clips and screws to secure the lights, especially on surfaces where adhesive may not hold well (e.g., concrete, metal, plastic, wood).
4. **Connecting Light Strings:** Connect light strings every 28 feet using the waterproof connectors. Ensure the caps are screwed on tightly to maintain water resistance.
5. **Control Box Placement:** It is recommended to place the IP65 control box indoors for better WiFi reception, if possible.

EASY TO INSTALL

Warm Tips:

We provide 2 installation methods, one is to stick it directly with adhesive; the other is that our lamp beads are equipped with screw holes, which can be fixed with screws on materials that cannot be pasted.

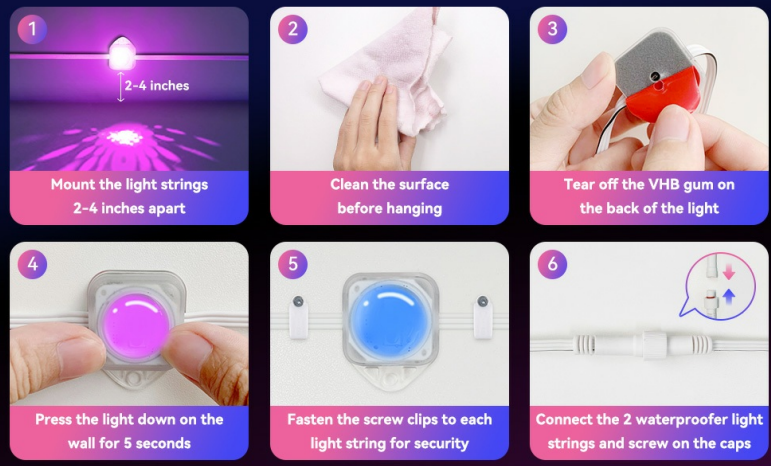


Image 4.1: Step-by-step guide for light installation.



Image 4.2: Compatible installation surfaces.

5. OPERATING INSTRUCTIONS

Your LemonNova Permanent Outdoor Lights Pro can be controlled via app, remote, or voice commands.

5.1. App Control

Download the **Lemon23 app** or **TUYA APP** from your smartphone's app store. Follow the in-app instructions to pair your lights. The app allows for:

- DIY lighting customization
- Timed dimming schedules
- Synchronization with music
- Selection from 16 million colors
- Access to 44 scene modes
- Brightness adjustment

DIY Endless Festival Lighting Effects

More functions can be achieved through the Lemon23 APP



Image 5.1: App control interface and features.

5.2. Remote Control

Use the included remote control for quick adjustments to your lights. Functions include power on/off, mode selection, speed adjustment, and color changes.

5.3. Voice Control

The lights support integration with **Alexa** and **Google Assistant** for convenient voice commands. Ensure your lights are paired with the respective smart home platform through the Lemon23 or TUYA app.

Smart App & Voice Control & Remote Control



Image 5.2: Smart App, Remote, and Voice Control options.

5.4. Music Mode

Activate Music Mode via the app to synchronize the light colors and patterns with the rhythm of your music. This feature enhances the ambiance for parties and gatherings.

Music Mode

Lights that dance along with your songs



Image 5.3: Music Mode in operation.

5.5. Daily and Accent Lighting

Beyond festive modes, the lights offer warm (2700K) and cool (6500K) white illumination up to 100 LM per light, suitable for everyday lighting and accentuating your home's architecture.

Daily lighting and Safety lighting

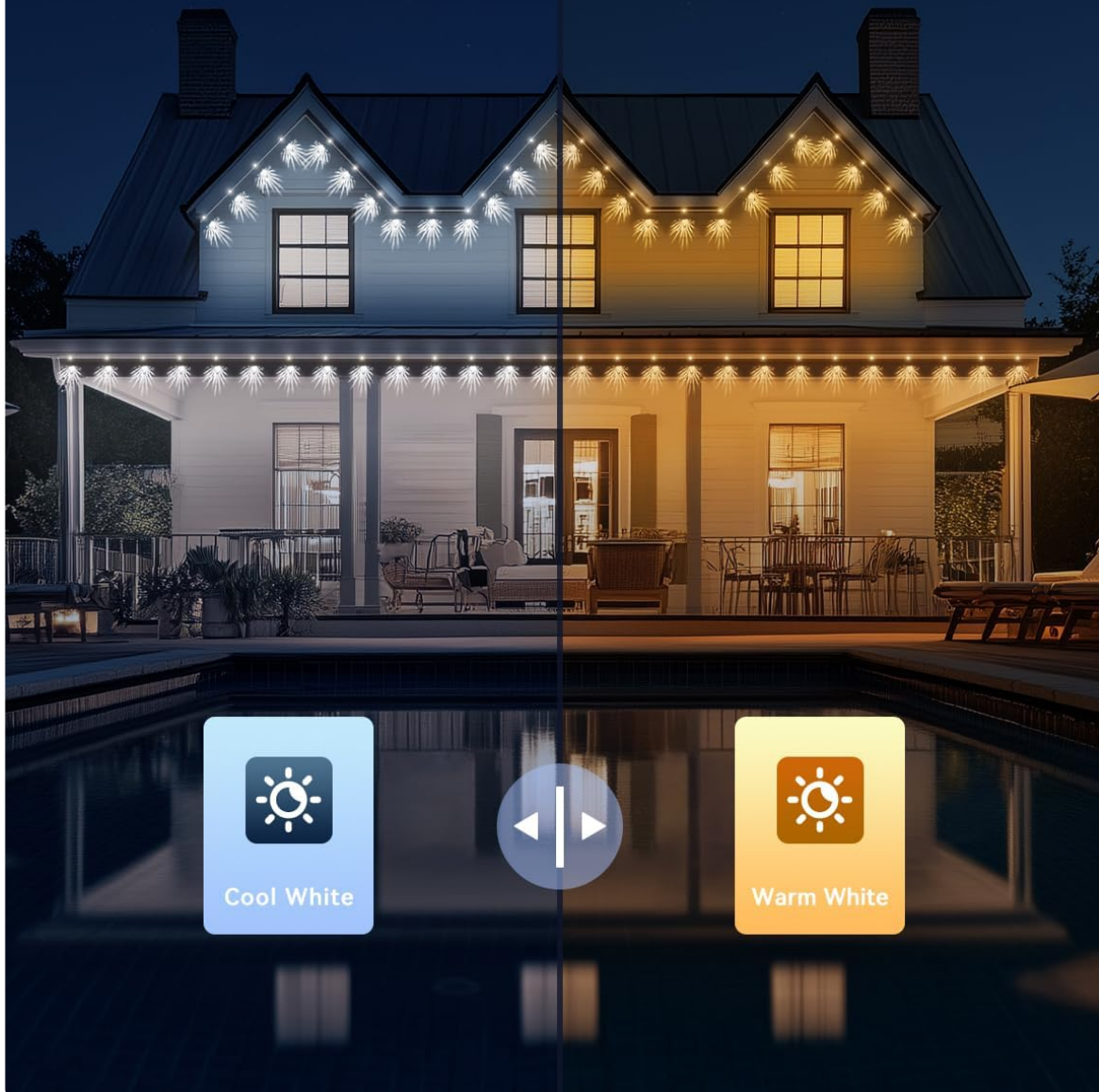


Image 5.4: Cool White vs. Warm White daily lighting options.

6. MAINTENANCE

The LemonNova Permanent Outdoor Lights Pro are designed for durability and minimal maintenance.

- **Waterproof Rating:** The lights are IP67 waterproof, and the control box is IP65 rated, ensuring protection against dust and water jets.
- **Material Durability:** Constructed with UV-resistant materials to prevent degradation from sun exposure.
- **Operating Conditions:** Designed to operate reliably in temperatures ranging from -4°F to 140°F (-20°C to 60°C).

- **Lifespan:** The LED lights have an estimated lifespan of up to 50,000 hours.
- **Cleaning:** Periodically wipe the lights and control box with a soft, damp cloth to remove dirt and debris. Avoid using harsh chemicals or abrasive cleaners.



Image 6.1: Waterproof features for year-round protection.



Image 6.2: Built for outdoor reliability in various weather conditions.

7. TROUBLESHOOTING

- **Remote Buttons Not Matching Colors:** This is not a product defect. Use the line sequence function within the app to adjust the colors until they match correctly. Cycle through different line sequence modes as needed.
- **Colored Edges Around White Light:** The eave lights use RGB technology to create white light. To minimize colored edges, ensure the lights are installed close to the wall.
- **WiFi Connectivity Issues:** The system only supports 2.4G WiFi. Ensure your router is configured for 2.4G, and the control box is placed in an area with good signal strength.

- **Lights Not Turning On:** Check all power connections and ensure the adapter is properly plugged into a working outlet. Verify that the controller is securely connected to the light strings.

Please read the following information carefully before purchasing:

1. The eave light is RGB, meaning white light is made by mixing red, green, and blue. This can cause colored edges around the white light. To avoid this, install it close to the wall.

2. The remote buttons may not match the colors. This isn't a product issue. Please use the line sequence function in the app to adjust the colors. (switch different line sequence modes until the color is adjusted correctly). For any questions, contact customer service.

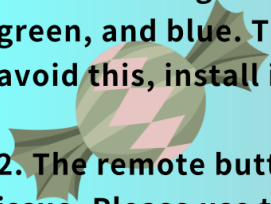
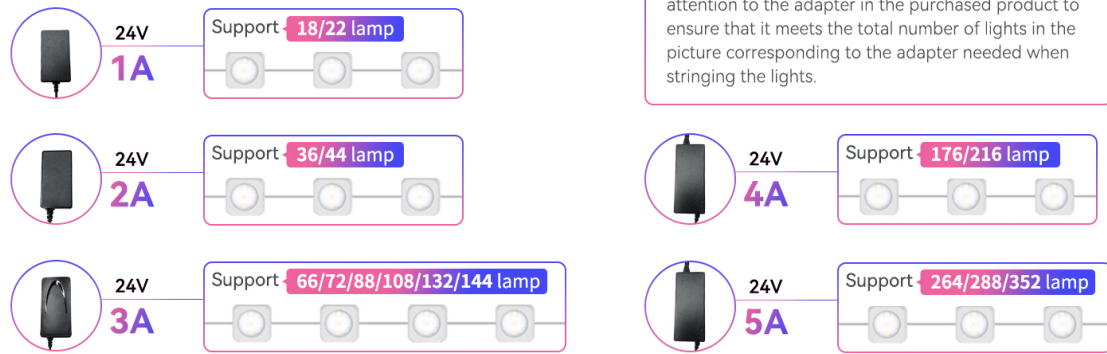


Image 7.1: Important notes for common issues.

8. SPECIFICATIONS

Feature	Specification
Model Number	3231W-W-132
Brand	LemonNova
Light Source Type	LED
Number of Light Sources	132
Item Length	180 Feet
Ingress Protection (IP) Rating	IP67 (Lights), IP65 (Control Box)
Operating Temperature	-4°F to 140°F (-20°C to 60°C)
Color Temperature	2700K-6500K (Warm & Cold White)
White Brightness	Up to 100 LM per light (13200 Lumens total)
Wattage	72 watts
Control Method	App (Lemon23/TUYA), Remote Control, Voice Control (Alexa, Google Assistant)
WiFi Support	2.4G WiFi only
Material	Plastic, UV-resistant
Lifespan	Up to 50,000 hours

DETAILED EXPLANATION OF ADAPTER AND NUMBER OF LAMP BEADS



TIPS

If you intend to DIY the string lights, you need to pay attention to the adapter in the purchased product to ensure that it meets the total number of lights in the picture corresponding to the adapter needed when stringing the lights.

Image 8.1: Adapter and lamp bead compatibility details.

9. WARRANTY AND SUPPORT

For any questions, technical assistance, or warranty inquiries, please contact LemonNova customer service. We are committed to providing support for your product.



Image 9.1: LemonNova 24H Customer Support.