

VATOS 50019

VATOS Water Park Building Blocks Toy Instruction Manual

Model: 50019

1. PRODUCT OVERVIEW

The VATOS Water Park Building Blocks Toy is a 39-piece interactive water playset designed for children aged 3 and up. This versatile toy allows children to construct their own waterway system, fostering creativity and understanding of water dynamics. It is suitable for various play environments, including bathrooms, balconies, backyards, swimming pools, beaches, and even indoors.

Key Features:

- **Modular Waterway Design:** Features 39 building blocks for customizable water channel configurations.
- **Interactive Elements:** Includes a paddle wheel to generate water flow, a tower crane for lifting accessories, and various boats with dolls.
- **Educational Play:** Encourages learning about water dynamics, cause and effect, and basic physics principles like leverage.
- **Durable and Safe Construction:** Made from BPA-free and phthalate-free plastic, designed to withstand outdoor conditions without color fading.
- **Portable Design:** Compact size (approximately 20x30 inches) makes it easy to move and set up in different locations.

2. SAFETY INFORMATION

Please read and understand all safety instructions before allowing children to use this product. Adult supervision is recommended at all times during play.

- **Age Recommendation:** This toy is recommended for children aged 36 months to 12 years. Small parts may pose a choking hazard for younger children.
- **Material Safety:** The water table toy is constructed from durable, BPA-free, and phthalate-free plastic, ensuring safety for your child.

- **Water Safety:** Always supervise children when playing with water to prevent drowning or other water-related accidents. Ensure the play area is clear of hazards.
- **Assembly:** Adult assembly is required. Ensure all connections are secure before filling with water.
- **Outdoor Use:** When used outdoors, place the water table on a flat, stable surface to prevent tipping.

3. PACKAGE CONTENTS

Before assembly, please verify that all 39 pieces are present in the package. The set includes various waterway building blocks and accessories to create a complete water park experience.



Figure 3.1: All included components of the VATOS Water Park Building Blocks Toy, including waterway sections, boats, dolls, a crane, and other interactive elements.

Included Components:

- Waterway playset building blocks (various shapes and sizes)
- 2 Boats (one container boat, one speedboat)

- 2 Dolls (figures for the boats)
- 1 Paddle wheel
- 1 Tower crane
- Other accessories (e.g., rubber ducks, wind-up turtle, trees, ramps)
- User manual

4. ASSEMBLY INSTRUCTIONS

Follow these steps to assemble your VATOS Water Park. Adult assistance is recommended for assembly.

Step 1: Prepare the Waterway Connectors

The waterway connection points are designed with pre-pasted waterproof stickers. Ensure these stickers are properly seated within the grooves of the red connector pieces. Do not attempt to re-apply or remove these stickers unless necessary for adjustment.

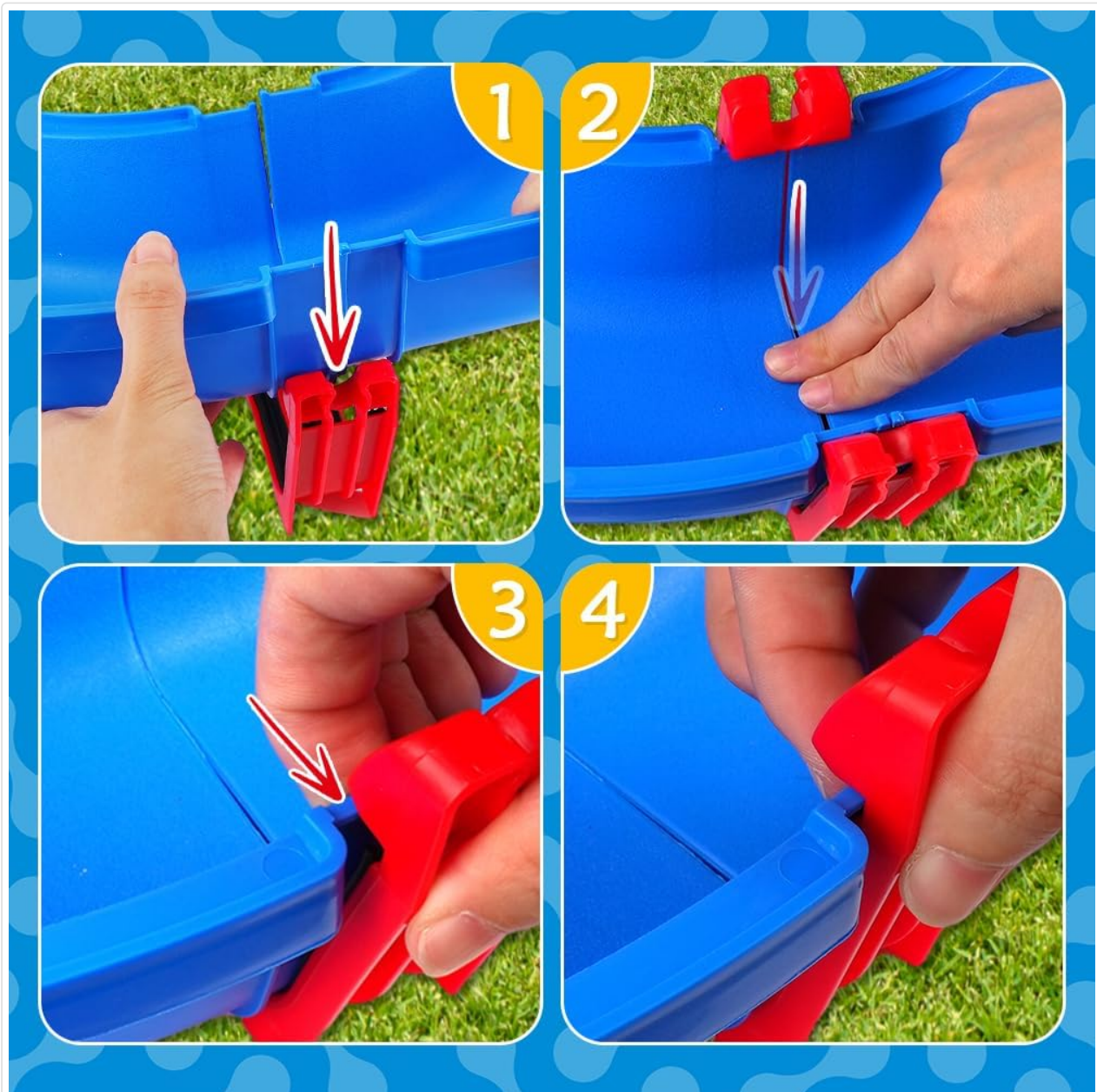


Figure 4.1: Proper placement of the black sealing strips within the red connector pieces to ensure a watertight seal.

Step 2: Connect Waterway Sections

To connect two waterway sections, align the red connector pieces with the slots on the blue waterway sections. Press down firmly and simultaneously on both sides from top to bottom until the pieces click securely into place. This method ensures a tight, leak-proof connection.

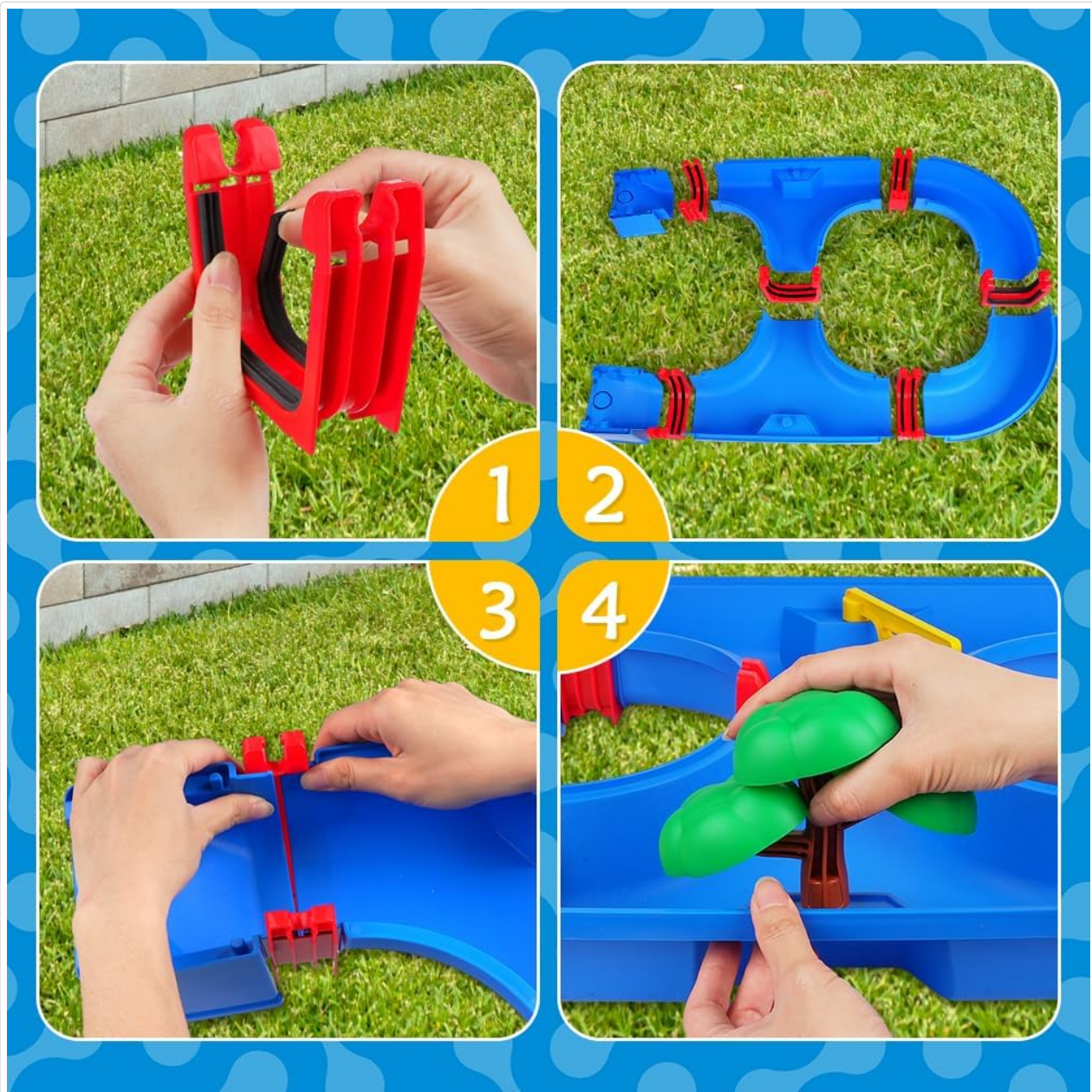


Figure 4.2: Step-by-step guide for connecting waterway sections. Ensure proper alignment and firm pressure for a secure fit.

Step 3: Attach Accessories

Once the main waterway is assembled, attach the paddle wheel, tower crane, and other decorative elements like trees to their designated slots on the water table. These pieces are designed to fit snugly.



Figure 4.3: The fully assembled water park with all accessories in place, ready for play.

5. OPERATING INSTRUCTIONS

Once assembled, the VATOS Water Park offers various interactive play opportunities.

Filling the Waterway:

Carefully pour water into the assembled waterway. Ensure the water level is appropriate for the boats to float and the paddle wheel to operate effectively without overflowing.

Using the Paddle Wheel:

Turn the handle of the paddle wheel to create a current in the water. This current will propel the boats through the canals, demonstrating basic water dynamics.



Figure 5.1: Demonstrations of the paddle wheel creating water movement and the crane in action.

Operating the Tower Crane:

Use the tower crane to lift and move small accessories or cargo blocks within the water park. This teaches children about the physical mechanics of leverage and simple construction tasks.

Navigating Boats:

Place the boats with their respective dolls into the water. Children can push the boats along the waterway, or use the paddle wheel to create currents that move them. Experiment with different water flows and boat placements.



Figure 5.2: Examples of boats navigating the waterway and the crane moving items.

6. MAINTENANCE AND CARE

Proper maintenance will extend the life of your VATOS Water Park Toy.

- **Cleaning:** After each use, especially when used outdoors, empty all water from the playset. Rinse all components with clean water to remove dirt, sand, or debris.
- **Drying:** Allow all pieces to air dry completely before storing to prevent mold or mildew growth.
- **Storage:** Store the disassembled or assembled water park in a cool, dry place away from direct sunlight when not in use. Prolonged exposure to extreme temperatures can affect the plastic's durability.
- **Inspection:** Periodically inspect all parts for wear and tear. Replace any damaged components to ensure continued safe play.

7. TROUBLESHOOTING

If you encounter any issues with your water park, refer to the following common solutions:

- **Water Leakage:** If water is leaking from the connections, ensure that the red connector pieces are fully and securely pressed into the blue waterway sections. Verify that the pre-pasted waterproof stickers are correctly positioned and not dislodged. Re-align and press down firmly on both sides of the connection.
- **Parts Not Fitting:** If a piece does not fit, do not force it. Double-check the assembly instructions to ensure you are attempting to connect the correct pieces in the proper orientation. Some pieces may require firm, even pressure to snap into place.
- **Stuck Moving Parts:** If the paddle wheel or crane mechanism feels stiff, ensure no debris is obstructing its movement. Rinse with clean water to clear any blockages.

8. SPECIFICATIONS

Feature	Detail
Model Number	50019
Brand	VATOS
Material	Plastic (BPA-free, Phthalate-free)
Number of Pieces	39
Product Dimensions (L x W x H)	76 x 51 x 10 cm (approx. 30 x 20 x 4 inches)
Product Weight	1.58 kg
Recommended Age	36 months - 12 years
Power Source	Manual

9. WARRANTY AND SUPPORT

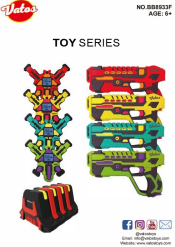
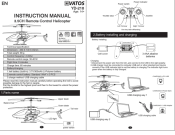


Warranty Information:

This VATOS product comes with a **1-year warranty** from the date of purchase. This warranty covers manufacturing defects under normal use. Please retain your proof of purchase for warranty claims.

Customer Support:

For any questions, concerns, or assistance with your VATOS Water Park Building Blocks Toy, please contact VATOS customer support. Refer to the product packaging or the official VATOS website for the most current contact information.

Related Documents - 50019

 <p>TOY SERIES</p> <p>NO.BB8933F AGE: 8+</p>	<p>Vatos Laser Tag Gun BB8933F Instruction Manual</p> <p>Comprehensive instruction manual for the Vatos Laser Tag Gun BB8933F, covering setup, operation, safety, and maintenance. Learn how to play and care for your laser tag set.</p>
 <p>INSTRUCTION MANUAL</p> <p>YD-218</p>	<p>VATOS YD-218 3.5CH Remote Control Helicopter Instruction Manual</p> <p>Comprehensive instruction manual for the VATOS YD-218 3.5CH remote control helicopter, covering parts identification, battery installation and charging, operating instructions, and safety precautions. Suitable for ages 14 and up.</p>
 <p>RECHARGEABLE LASER TAG</p> <p>Infrared countermeasure</p> <p>NO.BB8933F AGE: 8+</p>	<p>Vatos Rechargeable Infrared Laser Tag Gun - Instruction Manual</p> <p>Official instruction manual for the Vatos Rechargeable Infrared Laser Tag Gun set (Model NO.BB8933F). Learn how to set up, operate, and maintain your laser tag game for exciting battles.</p>
 <p>VATOS</p>	<p>Vatos Urban Kitchen & Bar Drinks Menu</p> <p>Explore the extensive drinks menu from Vatos Urban Kitchen & Bar, featuring a wide selection of beers, cocktails, wines, tequilas, mezcals, whiskies, bourbons, cognacs, rums, and other spirits.</p>