

Manuals.plus /

› HEIGAOLAPC /

› HEIGAOLA F10 N5095 Mini PC User Manual

HEIGAOLAPC F10 N5095

HEIGAOLA F10 N5095 Mini PC User Manual

1. INTRODUCTION

This manual provides essential information for the setup, operation, and maintenance of your HEIGAOLA F10 N5095 Mini PC. This compact and versatile mini PC is designed for various applications, from home office use to industrial control, featuring an Intel N5095 processor, a 10.1-inch HD IPS touchscreen, and extensive connectivity options.

Key features include:

- **Efficient Performance:** Equipped with an Intel N5095 processor (4C/4T, up to 2.9GHz) for smooth multitasking.
- **Fanless Silent Design:** Operates without noise, preventing throttling and ensuring stable performance.
- **Responsive Touchscreen:** 10.1-inch HD IPS touchscreen with 5-point G+G multi-touch for intuitive control.
- **Memory and Storage:** 8GB LPDDR4 RAM and 128GB eMMC storage for fast operation.
- **Dual 4K Display Output:** Supports two external 4K displays via HDMI and full-function USB-C ports.
- **Rich Professional I/O:** Includes dual DB9 (RS232) serial ports, 4x USB 3.0, and Gigabit Ethernet.
- **Versatile OS Support:** Pre-installed with Windows 11 Pro, with official support for Linux/Ubuntu dual-boot.
- **Advanced Connectivity:** Dual-Band WiFi 5, Bluetooth 5.2, and Gigabit Ethernet.
- **24/7 Operation Features:** Supports Wake-on-LAN, PXE Boot, and Auto Power-On.

2. PACKAGE CONTENTS

Please verify that all items are present in your package:

- 1 x HEIGAOLA F10 N5095 Mini PC

Note: Additional accessories such as power adapter, cables, or documentation may be included depending on the specific product variant or region.

3. PRODUCT OVERVIEW

The HEIGAOLA F10 N5095 Mini PC integrates a 10.1-inch touchscreen with a powerful computing unit, offering a

compact and efficient solution. Below is an overview of its physical features and ports.

3.1. Front and Rear View



Image Description: This image displays the HEIGAOLA F10 N5095 Mini PC from two angles. The top view shows the 10.1-inch touchscreen displaying the Windows 11 Pro desktop. The bottom view shows the rear panel of the device, highlighting various ports including DC 12V power input, Type-C, USB 3.0 ports, HDMI, LAN (Ethernet) ports, and dual RS232 serial ports.

3.2. Key Features and Components


Type-C 3.1
Full Functionality


x1
1000Mbps
Gigabit Lan


TF Card
up to **512GB**

8 
GB RAM

128 
GB ROM


Pre-installed
Win 11 Pro


UHD Graphics

5.0 
Wi-Fi

5.0 
Bluetooth



Image Description: An infographic detailing the core specifications of the Mini PC. It highlights the Type-C 3.1 (Full Functionality) port, 1000Mbps Gigabit LAN, TF Card slot (up to 512GB), 8GB RAM, 128GB ROM, 11th Intel Jasper Lake-N5095 processor, pre-installed Windows 11 Pro, Intel UHD Graphics, WiFi 5.0, and Bluetooth 5.0.

3.3. Port Layout

Mini PC with Versatile Connectivity

Expand Connect Possibilities

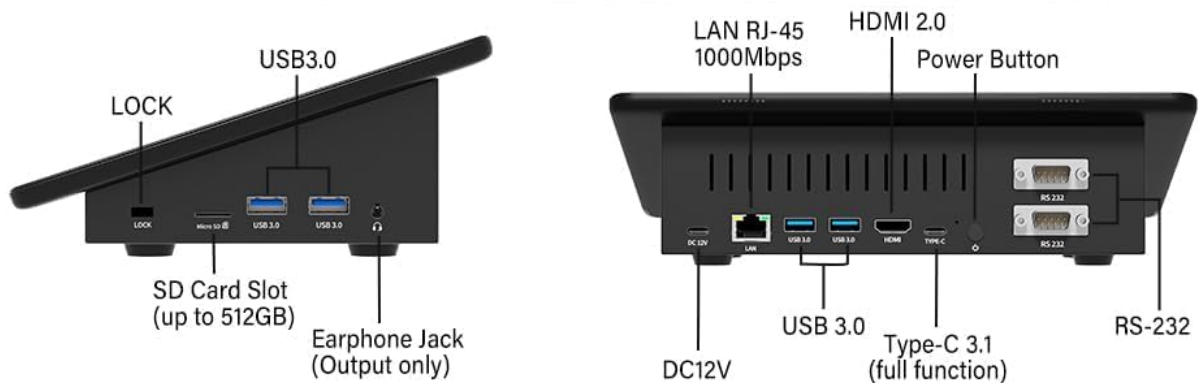


Image Description: A detailed diagram illustrating the various ports available on the HEIGAOLA F10 N5095 Mini PC. It shows the DC 12V power input, LAN RJ-45 1000Mbps ports, USB 3.0 ports, HDMI 2.0, Power Button, Type-C 3.1 (full function), RS-232 ports, SD Card Slot (up to 512GB), Earphone Jack (Output only), and a LOCK slot.

4. SETUP INSTRUCTIONS

Follow these steps for the initial setup of your Mini PC:

- 1. Connect Power:** Connect the provided power adapter to the DC 12V port on the Mini PC and then to a power outlet.
- 2. Connect Peripherals:**
 - **Keyboard and Mouse:** Connect a USB keyboard and mouse to the available USB 3.0 ports.
 - **External Display (Optional):** If using an external monitor, connect it via the HDMI or Type-C port.
 - **Network:** For a wired connection, connect an Ethernet cable to one of the LAN RJ-45 ports.
- 3. Power On:** Press the Power Button located on the rear panel to turn on the Mini PC.
- 4. Initial Configuration:** Follow the on-screen instructions to complete the Windows 11 Pro setup, including

language, region, network connection, and user account creation.

5. OPERATING INSTRUCTIONS

5.1. Using the Touchscreen

The 10.1-inch HD IPS touchscreen provides an intuitive way to interact with your Mini PC. It supports 5-point G+G multi-touch gestures, allowing for responsive control without the need for a mouse or keyboard for basic operations.

Touch screen, no mouse and keyboard required

10.1" IPS Touch Screen 1280*800

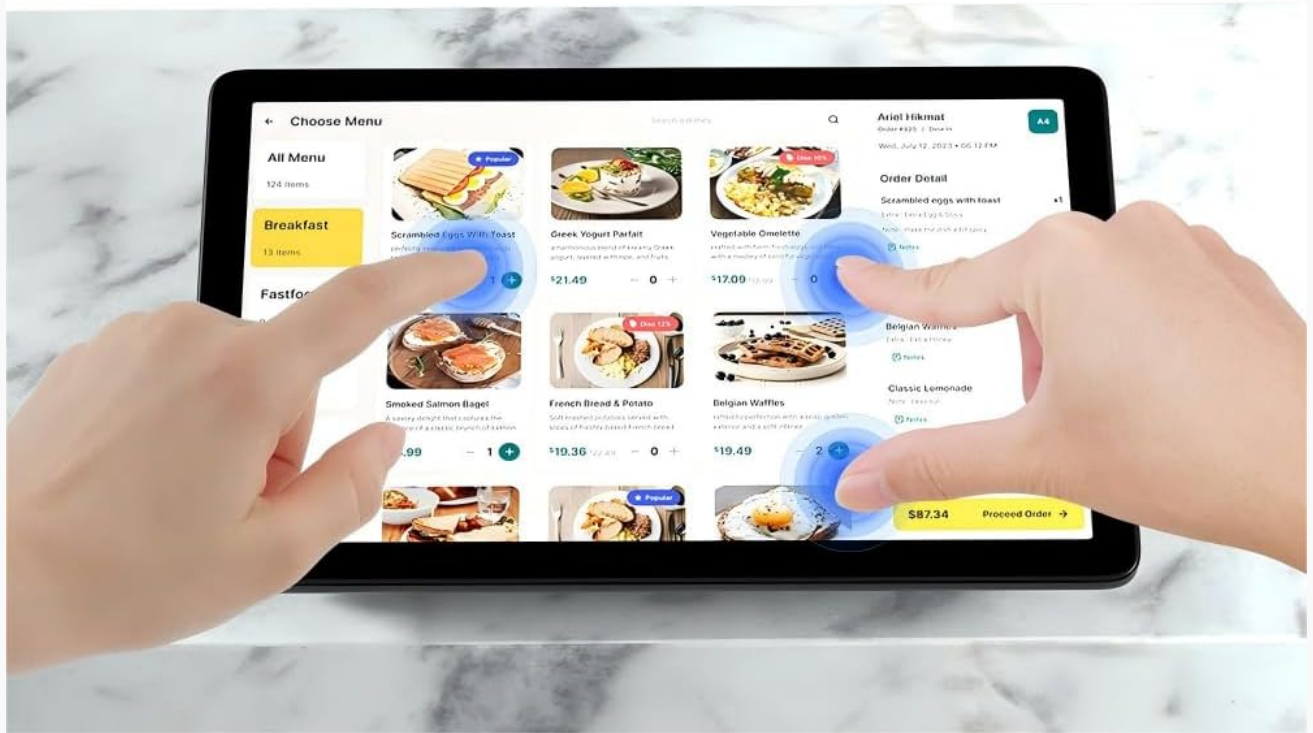


Image Description: A close-up view of the 10.1-inch touchscreen displaying a menu interface, with two fingers interacting with the screen to demonstrate its touch capabilities. The text overlay emphasizes "Touch screen, no mouse and keyboard required" and specifies "10.1" IPS Touch Screen 1280*800".

5.2. Dual 4K Display Output

Enhance your productivity by connecting up to two external 4K displays simultaneously. Use the HDMI 2.0 port and the full-function USB-C port for extended desktop or mirrored display configurations.

10.1 inch Mini PC with Dual 4K Output

Increase efficiency and productivity



HDMI 2.0



Type-C 3.1
(full function)



Image Description: The Mini PC is shown connected to two external monitors, both displaying high-resolution content, demonstrating its dual 4K output capability via HDMI 2.0 and Type-C 3.1 (full function). The image highlights increased efficiency and productivity with multiple displays.

5.3. Operating System Support

The Mini PC comes pre-installed with Windows 11 Pro. It also offers official support for Linux and Ubuntu systems, allowing for flexible dual-boot configurations or complete operating system replacement, catering to various user preferences and development needs.



Image Description: This image illustrates the Mini PC's operating system versatility. The central Mini PC screen displays Windows 11, flanked by two larger monitors showing Linux and Ubuntu interfaces, respectively. This visually confirms support for Windows 11 Pro, Linux, and Ubuntu systems.

5.4. Advanced Features for 24/7 Operation

The HEIGAOLA F10 N5095 Mini PC includes features designed for continuous operation and remote management:

- **Wake-on-LAN (WoL):** Allows the Mini PC to be powered on remotely over a network connection.
- **PXE Boot:** Enables booting from a network server, useful for system deployment and maintenance.
- **Auto Power-On:** Configures the Mini PC to automatically power on after a power outage.
- **Remote Desktop (RDP):** Supports remote access for management and control.

6. CONNECTIVITY

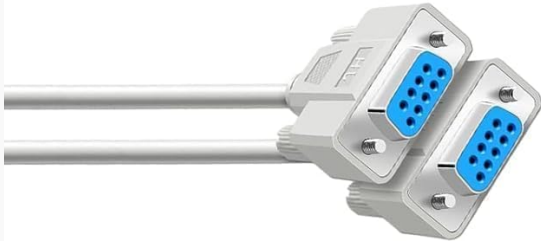
The Mini PC offers a comprehensive suite of connectivity options:

- **Wireless:** Dual-Band WiFi 5 (802.11ax) for high-speed wireless internet access and Bluetooth 5.2 for connecting wireless peripherals.
- **Wired Network:** Gigabit Ethernet (LAN RJ-45 1000Mbps) for stable and fast wired network connections.
- **USB Ports:** Four USB 3.0 ports for connecting various USB devices such as external drives, keyboards, and mice.
- **Type-C Port:** A full-function USB-C port supporting data transfer, video output (4K), and power delivery.
- **Serial Ports:** Dual DB9 (RS232) serial ports for industrial control, point-of-sale systems, and other professional applications.
- **HDMI:** HDMI 2.0 for connecting to external displays, projectors, or TVs, supporting up to 4K resolution.
- **SD Card Slot:** Supports TF cards up to 512GB for expandable storage.



RS232 Ports Are Widely Used For Computer Serial Interface Peripheral Connections.

It is used to connect cables and mechanical and electrical characteristics, signal functions and transmission processes.



RS232 AND HDMI 2.0 EXPANDS DIFFERENT CONTENT



HDMI 2.0 Supports 4K Video Playback, Watching High Definition TV

Meet different needs synchronize audio and video, realize high definition conversion.



Image Description: This image highlights the RS232 serial ports and HDMI 2.0 port. It explains that RS232 ports are widely used for peripheral connections in industrial and commercial settings, while HDMI 2.0 supports 4K video playback and high-definition TV, allowing for synchronized audio and video.

7. MAINTENANCE

7.1. Fanless Design

The HEIGAOLA F10 N5095 Mini PC features a fanless design, which contributes to silent operation and reduces dust accumulation. This design minimizes maintenance requirements related to cooling fans.

Mini PC with 10.1 inch Touchscreen Monitor

Fanless design with no noise

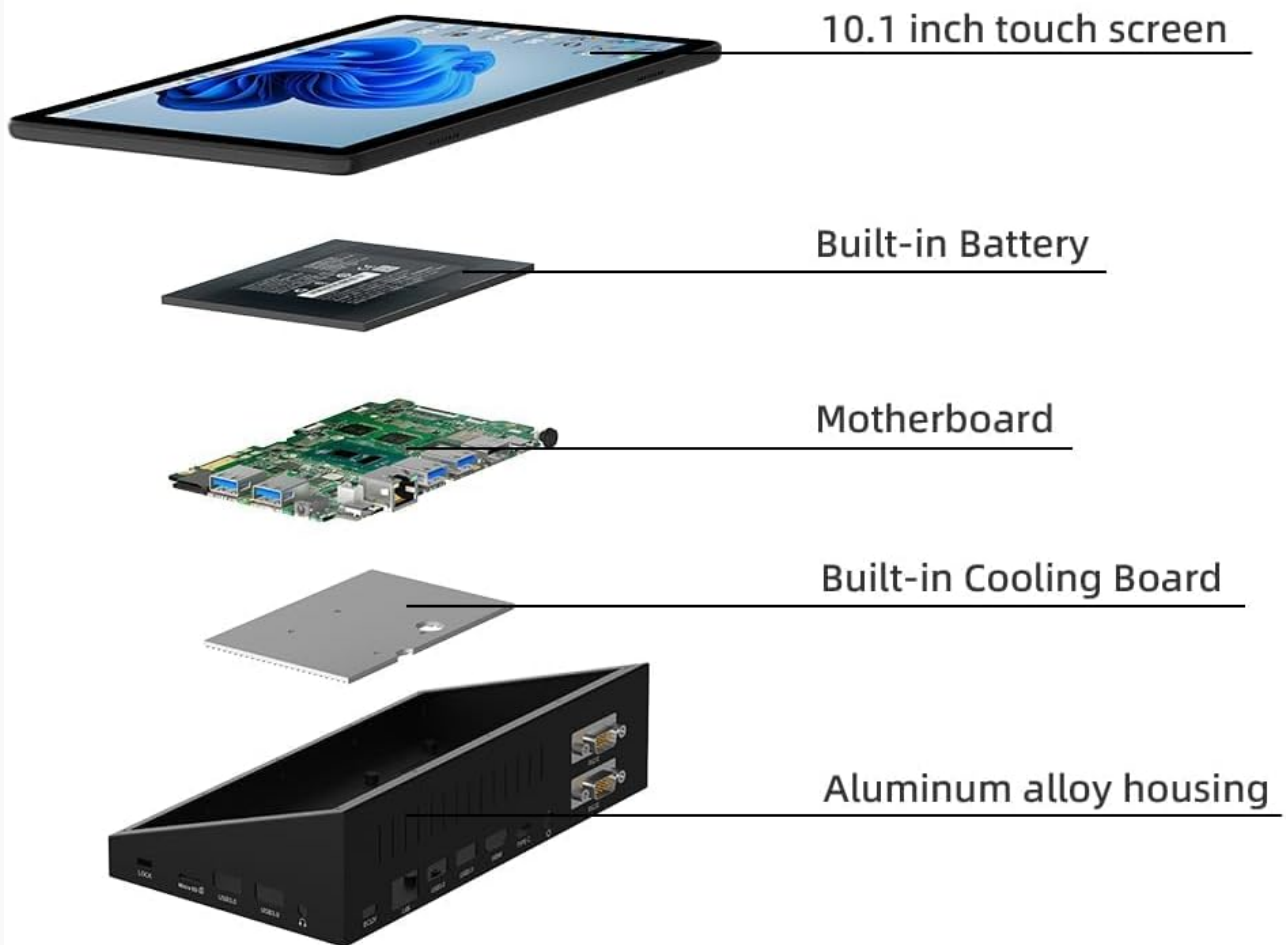


Image Description: An exploded view diagram showing the internal components of the Mini PC. It illustrates the 10.1-inch touch screen, the built-in battery (if applicable to the specific model, though this variant is without battery), the motherboard, the built-in cooling board, and the aluminum alloy housing, emphasizing the fanless design for quiet operation.

7.2. General Care

- Keep the device in a clean, dry environment, away from direct sunlight and extreme temperatures.
- Clean the touchscreen and exterior with a soft, lint-free cloth. Avoid abrasive cleaners.
- Ensure proper ventilation by not blocking the vents on the device.

8. TROUBLESHOOTING

If you encounter issues with your HEIGAOLA F10 N5095 Mini PC, refer to the following common solutions:

- **No Power:**
 - Ensure the power adapter is securely connected to both the Mini PC and a working power outlet.
 - Verify the power outlet is functional.

- **No Display on External Monitor:**

- Check the HDMI or Type-C cable connections to both the Mini PC and the monitor.
- Ensure the monitor is powered on and set to the correct input source.
- Try a different cable or monitor if possible.

- **Touchscreen Unresponsive:**

- Restart the Mini PC.
- Ensure the screen is clean and free of debris.

- **No Network Connection:**

- **Wired:** Check the Ethernet cable connection and router status.
- **Wireless:** Verify Wi-Fi is enabled and connected to the correct network. Restart your router if necessary.

- **Slow Performance:**

- Close unnecessary applications.
- Ensure there is sufficient free storage space.
- Check for and install any available system updates.

9. SPECIFICATIONS

Feature	Specification
Model	F10 N5095
Processor	Intel Celeron N5095 (4C/4T, up to 2.9GHz)
Graphics	Intel UHD Graphics (Integrated)
RAM	8 GB LPDDR4
Storage	128 GB eMMC (Expandable via TF Card up to 512GB)
Operating System	Windows 11 Pro (Supports Linux/Ubuntu dual-boot)
Display	10.1-inch HD IPS Touchscreen (1280x800 Pixels, G+G 5-point multi-touch)
Wireless Connectivity	WiFi 5 (802.11ax), Bluetooth 5.2
Wired Connectivity	Gigabit Ethernet (LAN RJ-45 1000Mbps) x2
USB Ports	USB 3.0 x4
Video Output	HDMI 2.0 x1, Type-C (full function) x1 (Supports Dual 4K Display)
Serial Ports	DB9 (RS232) x2
Audio	Earphone Jack (Output only)
Dimensions (LxWxH)	9.45 x 6.3 x 2.36 inches
Weight	1.98 pounds
Special Features	Fanless Design, Auto Power-On, Wake-on-LAN, PXE Boot, Remote Desktop (RDP)

10. PRODUCT VIDEO

Your browser does not support the video tag.

Video Description: This video showcases the HEIGAOLA F10 Touch Screen Mini PC, demonstrating its compact size, innovative sloping design for optimal viewing, and its use in various environments such as conference rooms, school lecture halls, and for personal entertainment. It highlights the N5095 processor, responsive touchscreen, and rich functions, including light gaming capabilities. The video also emphasizes its adaptability to different usage scenarios.

11. WARRANTY AND SUPPORT

HEIGAOLA is committed to customer satisfaction. For support inquiries, please refer to the following:

- **Customer Support:** HEIGAOLA offers 24-hour customer support for assistance with product-related questions or issues.
- **Price Protection:** A 30-day price protection policy is available. If the price of the product changes within 30 days of your purchase, you may be eligible for a refund of the difference.
- **Protection Plans:** Extended protection plans may be available for purchase separately to cover your device beyond the standard warranty period. Please check with your retailer for details on available 2-Year or 3-Year protection plans.

For further assistance, please visit the official HEIGAOLA support channels or contact your point of purchase.
