

CkeyiN MK707

CkeyiN MK707 4-in-1 Electric Milk Frother User Manual

Model: MK707

1. INTRODUCTION

Thank you for purchasing the CkeyiN MK707 4-in-1 Electric Milk Frother. This appliance is designed to create various milk foams and heat milk for your favorite beverages such as cappuccinos, lattes, and hot chocolates. Please read this manual carefully before use to ensure proper operation and maintenance.

2. PRODUCT OVERVIEW

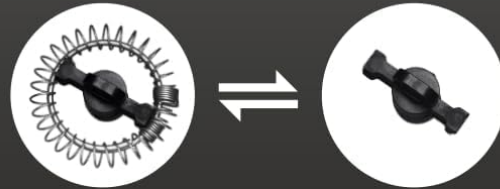
The CkeyiN MK707 features a powerful 500W motor and a 500ml capacity, offering four distinct functions for frothing and heating milk. Its design incorporates a non-stick interior for easy cleaning and an intelligent temperature control system.

Key Features:

- **4-in-1 Functionality:** Dense hot foam, airy hot foam, cold foam, and hot milk/chocolate milk.
- **High Power:** 500W motor for quick frothing and heating.
- **Large Capacity:** Up to 500ml for heating milk, suitable for multiple servings.
- **Non-Stick Coating:** Stainless steel inner pot with non-stick coating for easy cleaning.
- **Quiet Operation:** Magnetic induction heating and frothing technology minimizes noise.
- **Intelligent Temperature Control:** Maintains optimal milk temperature (approx. $65\pm5^{\circ}\text{C}$ for hot milk).

Internal Structure:

500W Potente motor



1. Anti-rust frosted outer layer

2. Hard stainless steel layer

3. Nonstick coating layer



Image: Diagram of the CkeyiN Milk Frother's internal layers, including the anti-rust frosted outer layer, hard stainless steel layer, and nonstick coating layer.

Operational Highlights:

El espumador de leche eléctrico de alta potencia tiene una potencia de hasta **500W** y puede espumar leche rápidamente en 2-3 minutos.



Ruido Bajo
≤40db



Espuma
rápida de 90S



Inteligente de
control de
temperatura



Diseño
antideslizante



Image: The CkeyiN Milk Frother showcasing its key operational features: low noise (≤40db), fast frothing (90 seconds), intelligent temperature control, and anti-slip design.

3. SAFETY INSTRUCTIONS

- Read all instructions before using the appliance.
- Do not immerse the main unit (housing) in water or other liquids. Only the inner pot is designed for contact with liquids.
- Ensure the power cord is not damaged and is kept away from hot surfaces.
- Do not operate the appliance if it has been damaged in any way. Contact customer service for assistance.
- Keep the appliance out of reach of children.
- Use the appliance only for its intended purpose as described in this manual.
- Always place the frother on a stable, flat, heat-resistant surface.

- Unplug the appliance from the power outlet when not in use and before cleaning.
- Do not fill above the 'MAX' line to prevent overflow.

4. SETUP

Unpacking and Initial Cleaning:

1. Carefully remove all packaging materials.
2. Wash the inside of the frother jug and the whisk with warm, soapy water. Rinse thoroughly and dry.
3. Wipe the exterior of the frother with a damp cloth. Do not immerse the main unit in water.

Placement and Power:

- Place the frother on a dry, level, and stable surface.
- Ensure the power cord is fully extended and plugged into a grounded electrical outlet.

Fill Level Guidelines:

You can make delicious coffee at home in the 90S



Touch
screen control



Non-stick
pan coating



Maximum milk foaming value
250ML/8.8OZ
Suitable for 3-5 people



Milk foaming
160ml/5.5OZ
Suitable for 2-3 people



Milk foaming minimum
100ml/3.4OZ
Suitable for 1-2 people



Image: The interior of the CkeyiN Milk Frother showing the 'MIN' and 'MAX' fill lines. The maximum frothing capacity is 250ml (8.8oz), suitable for 3-5 people. The minimum frothing capacity is 100ml (3.4oz), suitable for 1-2 people.

- Observe the 'MIN' and 'MAX' markings inside the jug.
- For milk frothing, do not exceed the lower 'MAX' line (approx. 250ml / 8.8oz) to prevent overflow.
- For heating milk without frothing, you can fill up to the upper 'MAX' line (approx. 500ml).
- Always ensure the milk level is above the 'MIN' line.

5. OPERATING INSTRUCTIONS

The CkeyiN MK707 offers four distinct modes for preparing your beverages. For best frothing results, it is recommended to use whole milk (fat content >3.0%).

4 in 1 MULTIFUNCIONAL

**Cómo Hacer Deliciosos Cafés
Espumosos en Casa en Segundos**



1. Espuma Caliente Densa



2. Espuma Aliente Airosa



3. Caliente/Espuma Fría
y Leche



4. Leche De Chocolate
Calentada



Image: The CkeyiN Milk Frother illustrating its four functions: 1. Dense Hot Foam, 2. Airy Hot Foam, 3. Hot/Cold Foam, and 4. Heated Chocolate Milk.

General Operation Steps:

1. Pour the desired amount of milk into the frother jug, ensuring it is between the 'MIN' and appropriate 'MAX' lines.
2. Place the lid securely on the jug.
3. Press the corresponding function button on the frother's base to select your desired mode. The frother will start automatically.
4. Once the process is complete, the frother will automatically shut off. Carefully remove the lid and pour the frothed or heated milk.

Detailed Mode Information:



Espuma densa caliente :

Capacidad :	160ML
tiempo de espuma :	90S
Temperatura :	65±5° (149±41°F)



Espuma de leche fría :

Capacidad :	160ML
tiempo de espuma :	90S
Temperatura :	25±5° (77±41°F)



Calentar chocolate/leche :

Capacidad :	160ML
tiempo de espuma :	90-120S
Temperatura :	45-60-70-80° (113/140/158/176°F)

Image: A table providing detailed parameters for different frothing and heating modes, including recommended capacity, frothing/heating time, and target temperature.

- **1. Dense Hot Foam:** Ideal for cappuccinos. Capacity: 160ml. Frothing Time: Approx. 90 seconds. Temperature: 65±5°C (149±41°F).
- **2. Airy Hot Foam:** Suitable for lattes. Capacity: 160ml. Frothing Time: Approx. 90 seconds. Temperature: 65±5°C (149±41°F).
- **3. Cold Foam:** Perfect for iced coffees. Capacity: 160ml. Frothing Time: Approx. 90 seconds. Temperature: 25±5°C (77±41°F).
- **4. Hot Milk / Hot Chocolate Milk:** For warming milk or mixing with chocolate. Capacity: 160ml. Heating Time: 90-120 seconds. Temperature: 45-60-70-80°C (113/140/158/176°F).

6. CLEANING AND MAINTENANCE

Regular cleaning ensures optimal performance and extends the life of your milk frother.

Cleaning Steps:

Easy to clean

Do not wash the outside directly with water
Please prevent water from overflowing when cleaning

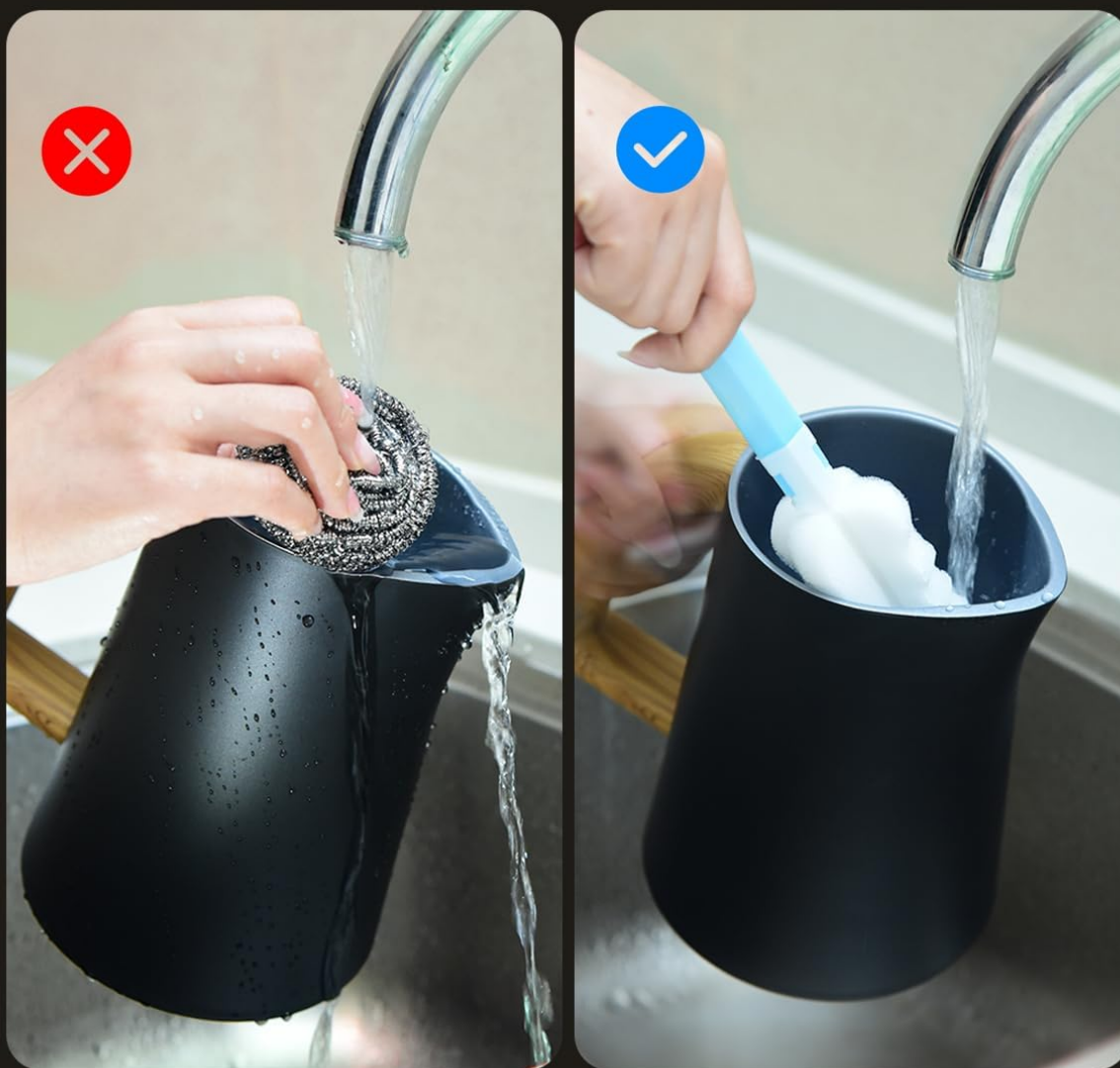


Image: Visual guide demonstrating the correct method for cleaning the CkeyiN Milk Frother's interior with a brush and water, and the incorrect method of washing the exterior directly under running water.

1. Always unplug the frother from the power outlet before cleaning.
2. Allow the frother to cool down completely after use.
3. Remove the whisk from the jug.
4. Rinse the interior of the jug and the whisk with warm water immediately after use. The non-stick coating makes this easy. You may use a soft sponge or the provided cleaning brush with a small amount of mild dish soap.
5. **Important:** Do not wash the exterior of the frother directly with water. Wipe the exterior with a damp cloth

only. The main unit cannot be immersed in water.

6. Ensure no water overflows into the electrical components during cleaning.

7. Dry all parts thoroughly before storing or next use.

7. TROUBLESHOOTING

If you encounter any issues with your CkeyiN Milk Frother, please refer to the following common problems and solutions:

Problem	Possible Cause	Solution
Frother does not turn on.	No power supply.	Check if the power cord is securely plugged into a working outlet.
Milk not frothing properly.	Incorrect milk type or temperature. Too much/too little milk.	Use cold whole milk (fat content >3.0%). Ensure milk level is between MIN and frothing MAX line.
Milk overflows during operation.	Too much milk added.	Do not exceed the 'MAX' line for frothing. Reduce milk quantity.
Unusual noise during operation.	Whisk not properly seated or foreign object.	Ensure the whisk is correctly placed at the bottom of the jug. Check for any obstructions.
Milk is not hot enough.	Incorrect mode selected or insufficient heating time.	Ensure the correct heating mode is selected. Allow the cycle to complete fully.

8. SPECIFICATIONS

- **Brand:** CkeyiN
- **Model:** MK707
- **Power:** 500W
- **Capacity:** 500ml (max for heating), 250ml (max for frothing)
- **Material:** Stainless Steel (inner pot), PP (outer shell)
- **Dimensions:** 8.31 x 7.76 x 7.09 inches
- **Item Weight:** 2.49 pounds

9. WARRANTY AND SUPPORT

This product comes with a standard manufacturer's warranty. For detailed warranty information, technical support, or customer service inquiries, please refer to the contact information provided at the point of purchase or visit the official CkeyiN website. Please retain your proof of purchase for warranty claims.