

[Manuals.plus](#) /

> [EKAT](#) /

> EKAT 10.1-inch Android Car Stereo User Manual for Toyota Camry 2015-2017

EKAT 10.1-inch Android Car Stereo for Toyota Camry 2015-2017

EKAT 10.1-inch Android Car Stereo User Manual

For Toyota Camry 2015, 2016, 2017 Models

1. INTRODUCTION

This manual provides detailed instructions for the installation, operation, and maintenance of your EKAT 10.1-inch Android Car Stereo. This unit is designed specifically for Toyota Camry models from 2015 to 2017, offering advanced features such as Wireless Carplay, Android Auto, GPS navigation, DSP audio processing, and a high-resolution IPS touchscreen. Please read this manual thoroughly before installation and use to ensure proper functionality and safety.

2. PRODUCT COMPATIBILITY

The EKAT 10.1-inch Android Car Stereo is compatible with Toyota Camry models manufactured between 2015 and 2017. Please verify your vehicle's dashboard configuration matches the compatible designs shown below.

For Toyota Camry 2015 -2017



Fit!!



Fit!!



Not Fit!!



Figure 2.1: Compatible and Incompatible Dashboard Configurations for Toyota Camry 2015-2017. Ensure your vehicle's dashboard matches the 'Fit!!' examples for proper installation.

3. WHAT'S IN THE BOX

Carefully unpack the contents and ensure all items listed below are present. If any items are missing or damaged, please contact customer support.

Your browser does not support the video tag.

Video 3.1: Unboxing and overview of the EKAT car stereo components. This video demonstrates the contents of the product packaging.



Figure 3.1: Complete Package Contents. This image displays the main unit, wiring harnesses, GPS antenna, rear camera, and installation tools.

- EKAT 10.1-inch Android Car Stereo Unit
- Power Cable with Canbus (if applicable to your vehicle)
- Power Cable without Canbus (alternative)
- RCA Cable Set
- GPS Antenna
- Rear Camera Input Cable
- USB Cables (x2)
- Microphone (MIC)
- AHD Rear Camera
- Installation Tool
- User Manual

4. SETUP AND INSTALLATION

Professional installation is recommended. Disconnect the vehicle's battery before beginning installation to prevent electrical damage.

4.1. Unit Assembly

The main unit comes pre-assembled with the display and frame. If disassembly is required for specific wiring or access, follow these steps:

1. Gently separate the display from the frame by carefully prying along the edges.
2. To reassemble, align the display with the frame and press firmly until it clicks into place.

4.2. Wiring Connections

Identify the correct power cable for your vehicle. Some Toyota Camry models may require the Canbus power cable

for full functionality, including steering wheel controls. Connect the RCA cables, GPS antenna, USB cables, microphone, and rear camera input cable to the corresponding ports on the main unit.

4.3. Steering Wheel Control Setup

After connecting the Canbus, it is necessary to configure the steering wheel controls. Navigate to **Settings > Factory Setup** and enter the appropriate password (refer to your user manual for the default password). Select your car's year and model. Then, go to **Steering Learning** to complete the button assignment process.



Note: After connecting the Canbus, you need to set Canbus correctly to get your steering wheel controls to work. The procedure is as follows, click Settings--Factory Setup and input password 1234-Car settings, choose Raise+the year and model of your car. Then go "Steering Learning" in the Factory Setting, complete the steering wheel button learning.

Figure 4.1: Steering Wheel Control Learning Interface. This image illustrates the menu for programming your vehicle's steering wheel buttons.

5. OPERATING INSTRUCTIONS

5.1. System Overview

The unit features an 8-core CPU, Android 13 operating system, 4GB RAM, and 64GB ROM for smooth performance and ample storage.

Unleash the Power of Entertainment

8-core processor, Android 13 operating system, ensuring swift and responsive. 4GB of running memory, providing a smooth and lag-free interface. 64GB storage memory ensuring ample space for your on-the-go entertainment needs.



Figure 5.1: Core System Specifications. This image details the internal hardware and software of the EKAT car stereo.

5.2. Display and User Interface

The 10.1-inch IPS capacitive touchscreen offers a 1280x720P resolution for clear visuals. You can customize the interface with 59 different UI desktop themes.

Immersive Clarity and Elegance

The 9-inch IPS capacitive touchscreen, protected by a sleek 2.5D tempered glass mirror, boasts a vibrant 1280x720 resolution. Every detail comes to life on this immersive display, allowing you to experience a visual marvel.



Figure 5.2: High-Definition IPS Touchscreen. This image emphasizes the display quality and resolution.

59 UI Desktop Themes



Figure 5.3: Customizable UI Desktop Themes. This image shows a selection of the 59 available themes for personalizing your stereo's appearance.

5.3. Wireless Carplay & Android Auto

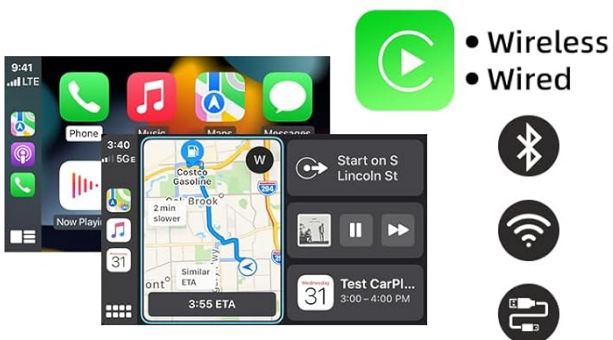
Connect your iPhone or Android smartphone wirelessly or via USB to access navigation, music, calls, and messages through the stereo's interface.

Wireless And Wired Apple CarPlay and Android Auto

Stay ahead with compatibility for the latest iOS and Android systems, ensuring a smooth and effortless transition between your car and mobile devices.



Carplay



Android Auto

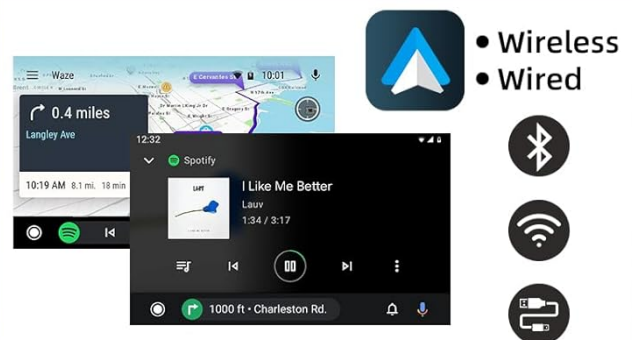


Figure 5.4: Wireless Carplay and Android Auto Functionality. This image demonstrates the integration of smartphone features with the car stereo.

5.4. GPS Navigation & WiFi Connection

The built-in GPS module supports various navigation apps and offline maps. Connect to WiFi via hotspot to download apps, stream content, and access online navigation.

WiFi and GPS Navigation

Seamlessly connect to the internet via WiFi or hotspot, unlocking a world of entertainment, streaming, and online navigation directly from your vehicle. Navigate effortlessly with precision using the built-in GPS function, ensuring you reach your destination with confidence.



Figure 5.5: GPS Navigation and WiFi Connectivity. This image highlights the navigation capabilities and internet access features.

5.5. Audio Features (DSP & EQ)

The Digital Signal Processing (DSP) technology and 32-band equalizer allow for precise audio tuning. Adjust sound points, bass boost, and individual speaker volumes for an optimized listening experience.

Digital Signal Processing (DSP)+32EQ

Boasting an advanced sound system featuring Digital Signal Processing (DSP) technology and a 32-band equalization. This innovative setup allows for precise tuning, ensuring every note and beat is finely optimized to perfection.



Figure 5.6: Digital Sound Processing and Equalizer. This image illustrates the advanced audio adjustment options available.

5.6. Other Functions

- **Rear View Camera Input:** Supports AHD rear view cameras for safe parking.
- **Bluetooth 5.0:** For hands-free calling and audio streaming.
- **FM/RDS Radio:** Enjoy local radio stations with RDS information display.
- **Split Screen:** Run two applications simultaneously on the screen.
- **RGB Illumination:** Customizable lighting options.



Figure 5.7: Additional Features Overview. This image displays the screens for rear camera, Bluetooth, and radio functions.

5.7. Optional Features

Certain advanced features may require activation. Please contact customer support for details on activating AI Chat, Network Radio, Voice Assistant, and Global Weather functions.

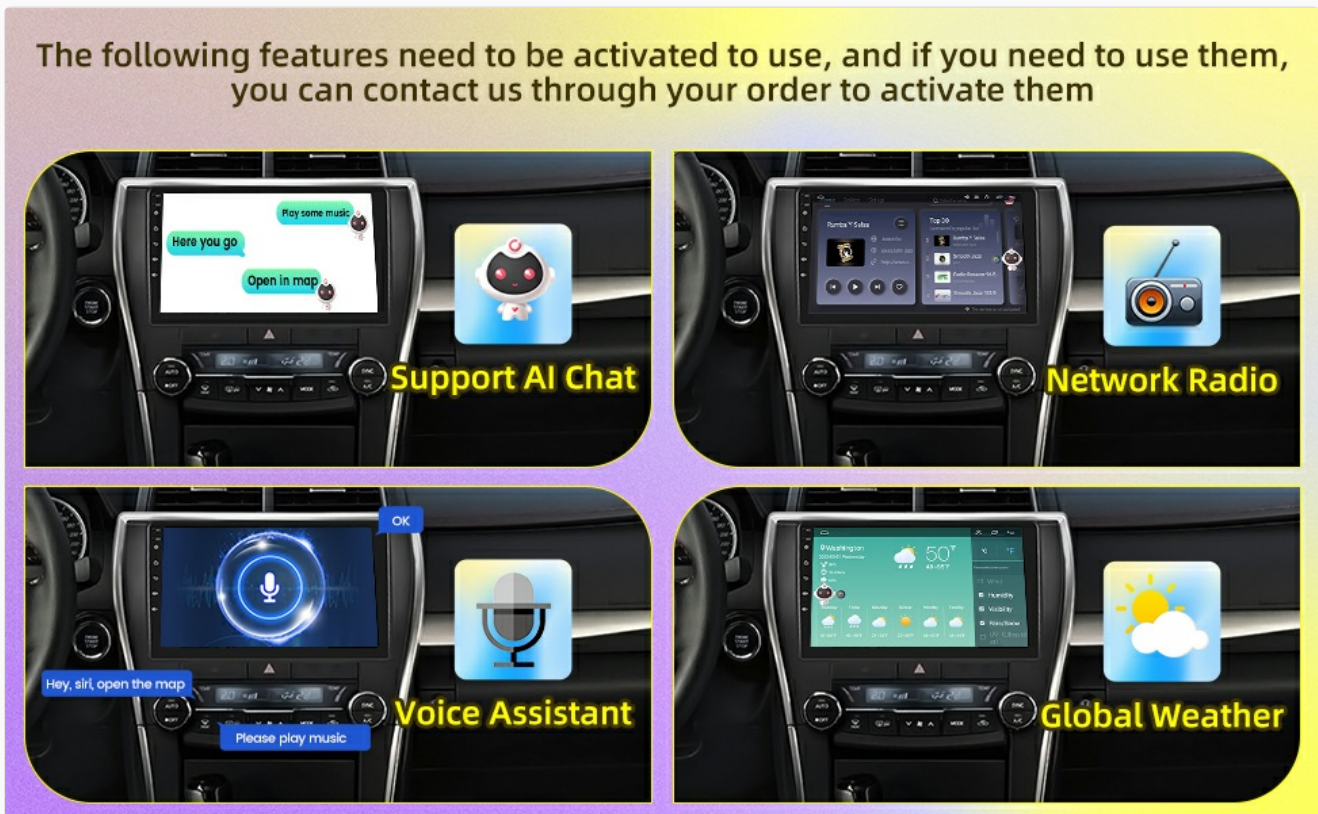


Figure 5.8: Optional Smart Features. This image illustrates the interfaces for AI Chat, Network Radio, Voice Assistant, and Global Weather, which may require activation.

6. MAINTENANCE

To ensure the longevity and optimal performance of your EKAT car stereo, follow these maintenance guidelines:

- **Screen Cleaning:** Use a soft, lint-free cloth to gently wipe the touchscreen. For stubborn smudges, slightly dampen the cloth with water or a screen-safe cleaner. Avoid harsh chemicals or abrasive materials.
- **Software Updates:** Periodically check for software updates through the system settings or the manufacturer's website to ensure you have the latest features and bug fixes.
- **Cable Connections:** Ensure all wiring connections are secure and free from damage. Loose connections can lead to intermittent functionality.
- **Environmental Care:** Avoid exposing the unit to extreme temperatures, direct sunlight for prolonged periods, or excessive moisture.

7. TROUBLESHOOTING

If you encounter issues with your car stereo, refer to the following common problems and solutions:

Problem	Possible Cause	Solution
Unit does not power on	Incorrect wiring, blown fuse, power supply issue.	Check all power connections. Inspect vehicle fuses and replace if necessary. Ensure the unit is properly grounded.
Wi-Fi disconnects frequently	Weak signal, software glitch, incorrect settings.	Ensure a strong Wi-Fi signal from your hotspot. Restart the unit. Check Wi-Fi settings and re-enter password.
Touchscreen unresponsive	Software freeze, physical damage, calibration issue.	Restart the unit. If the problem persists, perform a factory reset (note: this will erase data). Contact support if physical damage is suspected.
Steering Wheel Controls not working	Canbus not connected, incorrect Canbus settings, learning process not completed.	Verify Canbus connection. Go to Settings > Factory Setup and ensure correct car model is selected. Re-perform Steering Learning .
No sound output	Speaker wiring issue, volume muted, audio settings.	Check speaker connections. Ensure volume is not muted. Verify audio output settings in the system.

If these solutions do not resolve the issue, please contact EKAT customer support for further assistance.

8. SPECIFICATIONS

Feature	Specification
Brand	EKAT
Vehicle Service Type	Car (Toyota Camry 2015-2017)
Screen Size	10.1 Inches
Display Type	IPS
Resolution	1280 x 720
Operating System	Android 13

Feature	Specification
CPU	8 Core
Memory (RAM)	4GB
Storage (ROM)	64GB
Connectivity Technology	Bluetooth 5.0, Wi-Fi
Supported Navigation Systems	GLONASS, GPS, Galileo
Audio Output Mode	Stereo (with 32 EQ and DSP)
Human-Interface Input	Touchscreen, Voice
Item Dimensions (L x W x H)	11"L x 2.5"W x 9"H
Item Weight	1800 Grams

9. WARRANTY AND SUPPORT

The EKAT 10.1-inch Android Car Stereo comes with a **2-year warranty**. For warranty claims, technical support, or any questions regarding your product, please contact EKAT customer service through the retailer where the product was purchased or visit the official EKAT website for support resources.