

bonsaii C237-B

Bonsaii C237-B 6-Sheet Crosscut Paper Shredder User Manual

Model: C237-B | Brand: Bonsaii

INTRODUCTION

This manual provides essential information for the safe and efficient operation of your Bonsaii C237-B 6-Sheet Crosscut Paper Shredder. Designed for home and small office use, this shredder efficiently destroys sensitive documents, credit cards, and other materials into small, unreadable particles. Please read these instructions thoroughly before use and retain for future reference.

SAFETY INSTRUCTIONS

- **WARNING: RISK OF FIRE.** Do not use near flammable liquids or gases.
- Keep spray cans away from the device.
- Keep loose clothing, hair, and jewelry away from the paper entry slot.
- Do not insert fingers or other body parts into the shredder opening.
- Keep children and pets away from the shredder.
- Unplug the shredder when not in use or before cleaning.
- Do not shred metal objects, adhesive labels, or plastic film.

SETUP

1. **Unpack:** Carefully remove the shredder from its packaging.
2. **Position:** Place the shredder head securely onto the provided 3.4-gallon wastebasket. Ensure it is stable on a flat, level surface.
3. **Connect Power:** Plug the power cord into a standard electrical outlet.



Image: The Bonsai C237-B shredder head placed on its wastebasket, highlighting its 6-sheet capacity and 3-minute continuous shredding time.

OPERATING INSTRUCTIONS

Control Panel Overview

The control panel features a slide switch for different modes and indicator lights for status.

SAFETY PROTECTION

If unit goes beyond 3 mins run time
Required 40 mins cool down to prevent overheating
Manual reverse to clear paperjams easily



Image: Close-up of the shredder's control panel, showing the FWD, AUTO, OFF, and REV switch positions, along with Power (green) and Overheat (red) indicator lights.

- **FWD (Forward):** Manually feeds paper forward.
- **AUTO (Automatic):** Shredding begins automatically when paper is detected.
- **OFF:** Turns the shredder off.
- **REV (Reverse):** Manually reverses the shredding action to clear jams.

Shredding Documents

1. Ensure the shredder is plugged in and the slide switch is set to **AUTO**. The green 'Power' indicator light will illuminate.
2. Insert up to 6 sheets of paper (Letter Size, 75g/m²) into the paper entry slot. The shredder will automatically start and shred the paper.
3. For credit cards, insert one card at a time into the dedicated credit card slot.
4. The shredder can also destroy documents with staples or small paper clips.

Shreds paper into 13/64 * 45/64 inches (5*18mm) cross cut particles



Paper



Credit Cards



Clips



Staples

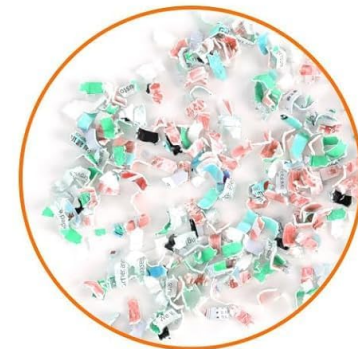


Image: The Bonsai C237-B shredder in action, illustrating its ability to cross-cut paper, credit cards, clips, and staples into small particles.

MAINTENANCE

Emptying the Wastebasket

The 3.4-gallon wastebasket can hold approximately 180 sheets of A4 paper. A transparent window allows you to monitor the fill level.

1. When the wastebasket is full, or the 'Bin Full Line' is reached, turn the shredder to **OFF** and unplug it.
2. Use the portable handle to lift the shredder head off the wastebasket.
3. Empty the shredded contents into a recycling bin.
4. Replace the shredder head securely onto the wastebasket.

Nitriding Steel Knife Material

Efficient and Fast, Saving Time



Image: The shredder head being lifted by its portable handle, revealing the wastebasket below, ready for emptying.

Overheating Protection

The shredder is equipped with an overheating protection system. If the unit operates continuously for more than 3 minutes (approximately 100 sheets) and becomes overheated, it will automatically shut off to protect the motor.

The 'Overheat' indicator light will turn red.



Image: The control panel with the 'Overheat' indicator light, which turns red when the unit is overheated, requiring a 40-minute cool-down period.

If this occurs, allow the shredder to cool down for approximately 40 minutes before resuming operation. The 'Power' indicator light will turn green again when it is ready for use.

TROUBLESHOOTING

- **Paper Jam:** If paper jams, switch the control to **REV (Reverse)** to clear the paper. If the jam persists, turn the shredder **OFF**, unplug it, and carefully remove the paper manually.
- **Shredder Not Starting:** Ensure the shredder is properly plugged in and the control switch is set to **AUTO**. Check if the 'Overheat' indicator is red; if so, allow it to cool down.
- **Shredder Stops Unexpectedly:** This is likely due to overheating protection. Refer to the 'Overheating Protection' section under Maintenance.

SPECIFICATIONS

Feature	Detail
Product Dimensions	17.8D x 17.8H Centimetres (14.1 x 11.8 x 7 inches)
Weight	3.24 kg

Cut Type	Cross Cut (5x18mm particles)
Standard Sheet Capacity	6 sheets (Letter Size, 75g/m2)
Wastebasket Capacity	3.4 Gallons (approx. 180 A4 sheets)
Continuous Shredding Time	3 minutes
Cool-down Time	40 minutes
Shreds	Paper, Credit Cards, Staples, Small Paper Clips
Special Features	Automatic Start/Stop, Overheating Protection, Manual Reverse, Portable Handle Design

WARRANTY & SUPPORT

Bonsaii provides a **1-Year Limited Protection** for your shredder. If you encounter any questions or issues with your product, please contact Bonsaii customer service for assistance.

- **Customer Service Email:** customer-care@bonsaii.com

Important Note: Each shredder is tested before shipping, so you may find some paper shreds from the testing process. This is normal and does not indicate a used product.