

TYMO HC520P

TYMO CURLGO Cordless Automatic Curling Iron User Manual

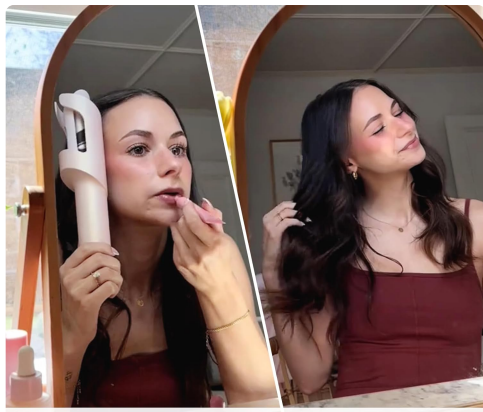
Model: HC520P | Brand: TYMO

1. INTRODUCTION

The TYMO CURLGO Cordless Automatic Curling Iron is designed for effortless hair styling, providing quick and easy curls with advanced safety features. Its innovative design ensures a smooth and tangle-free experience, delivering long-lasting, bouncy curls with a glossy finish.



Cordless One-Push Auto Curling: This image shows the TYMO CURLGO in use, highlighting its automatic curling function for effortless styling.

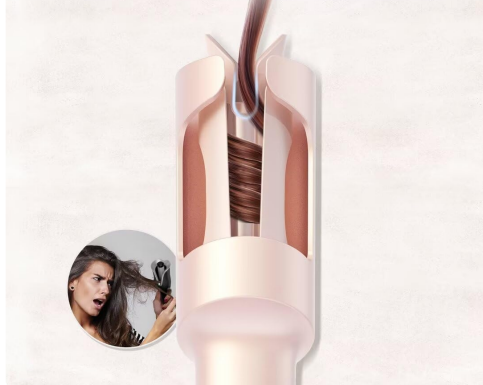


360° Anti-scald Design

360-degree Anti-Scald Design: The image illustrates the cool-to-the-touch exterior of the curling iron, ensuring safety during use.

Hair Never Gets Stuck

Intelligently detects tangles to prevent hair snags



Hair Never Gets Stuck: This graphic demonstrates the intelligent anti-tangle mechanism that prevents hair from snagging.

Long-lasting Bouncy Curls



Long-lasting Bouncy Curls: The image highlights the T-GLOSS ceramic coating and negative ion technology for shiny, smooth, and durable curls.

2. SETUP

2.1. Unboxing and Components

Upon opening the package, ensure all components are present:

- TYMO CURLGO Automatic Curling Iron
- 65W Fast Charger
- User Manual (this document)

2.2. Charging the Device

The TYMO CURLGO can be used cordlessly or plugged in for instant use. For optimal performance, fully charge the device before first use.

- Connect the provided 65W charger to the charging port on the device.
- Plug the charger into a power outlet.
- A full charge takes approximately 1.5 hours.
- The battery level indicator lights will show charging progress.

Corded Instant Use

Low battery? Plug in and style right away!



Corded mode requires **TYMO 65W charger**.

Corded Instant Use: This image demonstrates the curling iron being used while plugged into its charger, allowing for immediate styling even with a low battery.

2.3. Safety Lock

The device features a safety lock to prevent accidental activation. Ensure the device is unlocked before powering on.



Safety Lock: A close-up view of the safety lock switch, showing its locked and unlocked positions.

3. OPERATING INSTRUCTIONS

3.1. Button Functions and Temperature Settings

Familiarize yourself with the device's controls:

- **Power Button:** Press and hold for 2 seconds to turn on/off. Briefly press to switch temperature settings.
- **Directional Button:** Push to choose left/right rotation for curls.
- **Rotate Button:** Press to start rotation. It stops automatically after 8 seconds, or press again to stop.

Available Temperature Settings:

- **410°F / 210°C:** For thick and coarse hair.
- **365°F / 185°C:** For slightly fine to normal hair.
- **320°F / 160°C:** For bleached, damaged, or fine hair.



Buttons: An illustration detailing the Power, Directional, and Rotate buttons, along with their corresponding temperature settings.

3.2. Step-by-Step Curling Guide

1. Step 1: Prep

Unlock the device using the safety switch. Press and hold the power button for 3 seconds to turn it on. Briefly press the power button to select your desired temperature setting based on your hair type.



Step 1: Prep: Visual guide for unlocking, powering on, and setting the temperature.

2. Step 2: Orient

Hold the curling iron vertically with the slot facing away from your face. Insert a 1-inch section of hair into the slot. To avoid tangles, ensure the section is small and fully inserted.



Step 2: Orient: Demonstrates how to hold the device and insert a hair section.

3. **Step 3: Rotate**

Press the rotate button to begin wrapping the hair. The device will automatically stop rotation after 8 seconds. You can press the button again to stop or restart the rotation if needed.



Step 3: Rotate: Shows the user pressing the rotate button to curl the hair.

4. **Step 4: Beep**

After the rotation stops, wait for 8 seconds for the beep sound. If you have long or coarse hair, consider extending the holding time by an additional 3-5 seconds after the beep for a more defined curl.



Step 4: Beep: Illustrates waiting for the beep after rotation stops to allow the curl to set.

5. **Step 5: Release**

Gently pull the device downward to release the formed curl. For looser curls, comb through your hair. Use hairspray for a longer-lasting hold.



Step 5: Release: Shows the final step of releasing the curl and the resulting styled hair.

3.3. Hair Length Guidance

The TYMO CURLGO is ideal for medium hair lengths (14"-22"). For hair 18 inches or longer, consider extending the curl setting time by 3-5 seconds after the beep for optimal results.



Ideal for Medium Hair (14"-22"): A visual representation of recommended hair lengths for best curling results.

4. MAINTENANCE

To ensure the longevity and optimal performance of your TYMO CURLGO, follow these maintenance guidelines:

- **Cleaning:** Ensure the device is turned off and cooled down before cleaning. Use a soft, damp cloth to wipe the exterior. Do not use harsh chemicals or abrasive cleaners.
- **Storage:** Store the curling iron in a cool, dry place, away from direct sunlight and moisture. Keep it in its original packaging or a protective pouch to prevent damage.
- **Cord Care:** If using in corded mode, avoid wrapping the cord tightly around the device, as this can damage the cord over time.

5. TROUBLESHOOTING

If you encounter any issues with your TYMO CURLGO, refer to the following common troubleshooting tips:

- **Device Not Turning On:** Ensure the safety lock is in the unlocked position. Check if the battery is charged; if not, plug it in using the provided charger.
- **Hair Not Curling Properly:** Ensure hair sections are no larger than 1 inch. Make sure the hair is fully inserted into the slot. Adjust temperature settings according to your hair type. For longer or coarser hair, extend the holding time after the beep.
- **Hair Getting Tangled:** Always use small, clean sections of hair. Ensure hair is detangled before inserting. The intelligent anti-tangle mechanism should reverse if tangles are detected. If tangling persists, immediately release the hair and re-section.
- **Device Not Heating:** Verify the device is powered on and the desired temperature is selected. Allow a few moments for the device to reach the set temperature.
- **Battery Draining Quickly:** Ensure the device is fully charged before cordless use. Using the device in corded mode can extend styling time if the battery is low.

If these steps do not resolve the issue, please contact TYMO customer support.

6. SPECIFICATIONS

Feature	Detail
Product Dimensions	10.24 x 2.32 x 2.32 inches; 12.49 ounces
Item Model Number	HC520P
Batteries	1 Lithium Ion batteries required.
Manufacturer	TYMO
Product Benefits	Shine Enhancing, Curling, Volumizing, Hair Styling
Material	Ceramic Tourmaline
Hair Type	All
Wattage	25 watts

7. WARRANTY AND SUPPORT

TYMO is committed to providing high-quality products and customer satisfaction. Your TYMO CURLGO comes with the following support:

- **30-Day No-Risk Money Back Guarantee:** If you are not satisfied with your purchase, you may return it within 30 days for a full refund.
- **1-Year Hassle-Free Exchange:** The product is covered by a 1-year warranty for manufacturing defects, allowing for a free exchange.

For any inquiries, support, or warranty claims, please contact TYMO customer service through Amazon. Look for the 'Sold by Beauty Life Distributor' section on the product page and click to contact the seller.



TYMO Care: This image illustrates how to find contact information for support on Amazon, highlighting the 'Sold by' section.

© 2024 TYMO. All rights reserved.

Related Documents - HC520P

<div><div><div>TYMO</div><div>HC520P- 教程 5 国语言说明书</div></div><div><div>规格:</div><div>商品尺寸: 807*173mm</div></div><div><div>材料参数:</div><div>底座: 封套封套 12g 铜铝底, 内层 40g 铝漆板</div></div><div><div>制作工艺:</div><div>表面处理: 电泳</div><div>制作工艺: 热压成型</div></div><div><div>工艺参数:</div><div>加热功率: 1.5W, 可调, 色温可调</div><div>加热时间: 约 10 分钟, 色温可调</div><div>加热温度: 约 100°C, 可调</div><div>加热时间: 约 10 分钟, 可调</div></div><div><div>颜色及重量:</div><div>150g - 0.15kg</div></div></div>	<p>TYMO CURLGO Cordless Automatic Curling Iron User Manual & Styling Guide</p> <p>Comprehensive user manual for the TYMO CURLGO Cordless Automatic Curling Iron (Model HC520P), detailing specifications, operation, safety warnings, styling tips, maintenance, and warranty information for optimal hair curling results.</p>
<div><div><div>TYMO</div><div>CURLGO</div></div><div><div>f</div><div>fb</div></div><div><div>g</div><div>g</div></div><div><div>g</div><div>g</div></div></div>	<p>TYMO CURLGO Cordless Automatic Curling Iron User Manual & Styling Guide</p> <p>Discover the TYMO CURLGO Cordless Automatic Curling Iron user manual. This guide provides detailed instructions, safety warnings, specifications, and styling tips for the HC520P model. Learn about its 1-inch ceramic barrel, negative ion technology, fast charging, and 60-minute battery life for effortless, frizz-free curls. Includes maintenance and warranty information.</p>
<div><div><div>TYMO</div><div>PROFESSIONAL HAIR STYLING</div></div><div><div>g</div><div>g</div></div><div><div>g</div><div>g</div></div></div>	<p>TYMO CURLPRO Automatic Curling Iron User Manual</p> <p>User manual for the TYMO CURLPRO Automatic Curling Iron, providing safety instructions, operating steps, styling guide, product overview, specifications, maintenance, storage, and warranty information.</p>
<div><div><div>HOW TO USE TYMO HAIR STRAIGHTENER BRUSH</div></div><div><div>1. How to use the brush</div><div>2. How to use the brush</div><div>3. How to use the brush</div><div>4. How to use the brush</div><div>5. How to use the brush</div><div>6. How to use the brush</div><div>7. How to use the brush</div><div>8. How to use the brush</div><div>9. How to use the brush</div><div>10. How to use the brush</div></div></div>	<p>How to Use TYMO Hair Straightener Brush: Step-by-Step Guide</p> <p>Learn how to effectively use the TYMO Hair Straightener Brush with this concise, step-by-step guide. Achieve frizz-free, silky hair with easy-to-follow instructions for optimal results.</p>
<div><div><div>Frequently Asked Questions</div></div><div><div>1. How to use the brush</div><div>2. How to use the brush</div><div>3. How to use the brush</div><div>4. How to use the brush</div><div>5. How to use the brush</div><div>6. How to use the brush</div><div>7. How to use the brush</div><div>8. How to use the brush</div><div>9. How to use the brush</div><div>10. How to use the brush</div></div></div>	<p>TYMO Hair Straightener Brush: Frequently Asked Questions</p> <p>Answers to common questions about the TYMO hair straightener brush, covering usage, suitability for different hair types, safety, cleaning, and warranty.</p>

Frequently Asked Questions

- Q: How do I use the brush?
- A: The brush is designed to be used on dry hair. It is not recommended to use the brush on wet hair as it may cause damage to the hair.
- Q: What is the maximum temperature?
- A: The maximum temperature of the brush is 230°C. It is recommended to use the brush at a temperature of 180°C to 200°C.
- Q: How do I clean the brush?
- A: The brush can be cleaned by using a soft brush and warm water. It is recommended to clean the brush after every use.
- Q: How do I store the brush?
- A: The brush should be stored in a dry and cool place. It is recommended to store the brush in its original packaging.
- Q: What is the warranty?
- A: The brush has a 2-year warranty. It is recommended to contact the manufacturer for more information.
- Q: How do I contact the manufacturer?
- A: The manufacturer's contact information is provided on the back of the brush.
- Q: What is the contact information?
- A: The contact information is provided on the back of the brush.
- Q: How do I use the brush?
- A: The brush is designed to be used on dry hair. It is not recommended to use the brush on wet hair as it may cause damage to the hair.
- Q: What is the maximum temperature?
- A: The maximum temperature of the brush is 230°C. It is recommended to use the brush at a temperature of 180°C to 200°C.
- Q: How do I clean the brush?
- A: The brush can be cleaned by using a soft brush and warm water. It is recommended to clean the brush after every use.
- Q: How do I store the brush?
- A: The brush should be stored in a dry and cool place. It is recommended to store the brush in its original packaging.
- Q: What is the warranty?
- A: The brush has a 2-year warranty. It is recommended to contact the manufacturer for more information.
- Q: How do I contact the manufacturer?
- A: The manufacturer's contact information is provided on the back of the brush.
- Q: What is the contact information?
- A: The contact information is provided on the back of the brush.

[TYMO Hair Straightener Brush FAQ and Usage Guide](#)

Frequently asked questions and usage instructions for the TYMO hair straightening brush, covering topics like hair types, temperature settings, cleaning, and guarantees.