

## LEGAMI SPS0002

# Legami Teddy Bear Wireless Speaker with Phone Stand (Model SPS0002) Instruction Manual

## INTRODUCTION

---

Thank you for purchasing the Legami Teddy Bear Wireless Speaker with Phone Stand. This manual provides detailed instructions for the setup, operation, maintenance, and troubleshooting of your device. Please read this manual carefully before use and retain it for future reference.

## 1. SETUP

---

### 1.1 Unboxing and Package Contents

Carefully remove all items from the packaging. Ensure all components are present.

- Legami Teddy Bear Wireless Speaker
- USB Charging Cable



Image 1.1: The Legami Teddy Bear Wireless Speaker shown with its included USB charging cable.

## 1.2 Charging the Speaker

Before first use, fully charge the speaker.

1. Locate the Micro-USB charging port on the back of the speaker.
2. Connect the small end of the included USB charging cable to the speaker's Micro-USB port.
3. Connect the standard USB end of the cable to a USB power adapter (not included) or a computer's USB port.
4. The charging indicator light (if present, typically red) will illuminate during charging and turn off or change color when fully charged.
5. A full charge provides up to 3 hours of playing time.

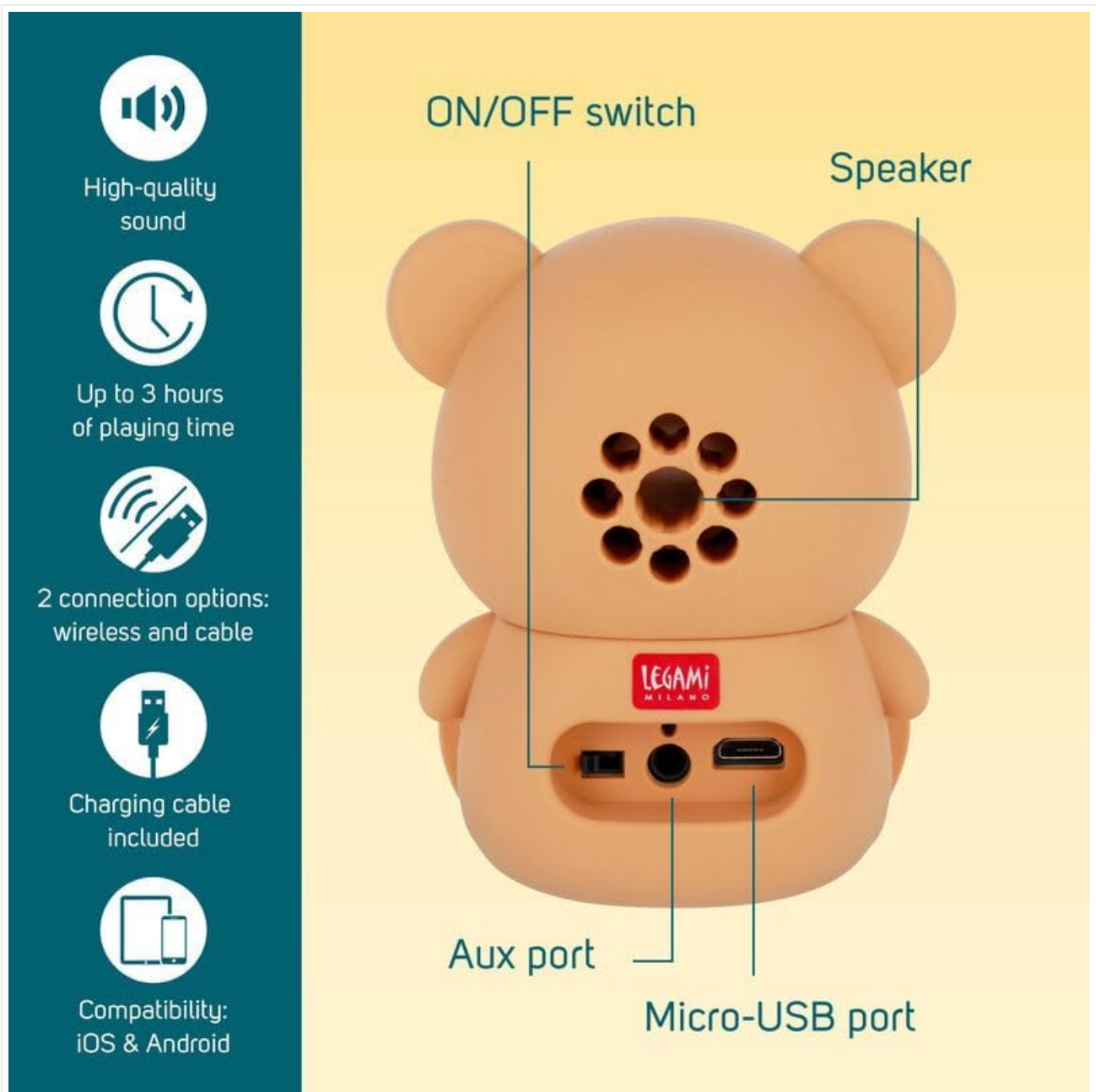


Image 1.2: Rear view of the speaker, highlighting the Micro-USB charging port and Aux port.

## 2. OPERATION

---

### 2.1 Powering On/Off

To power the speaker on or off:

- Locate the ON/OFF switch on the back of the speaker.
- Slide the switch to the "ON" position to power on the speaker. A sound or indicator light may confirm it is on.
- Slide the switch to the "OFF" position to power off the speaker.

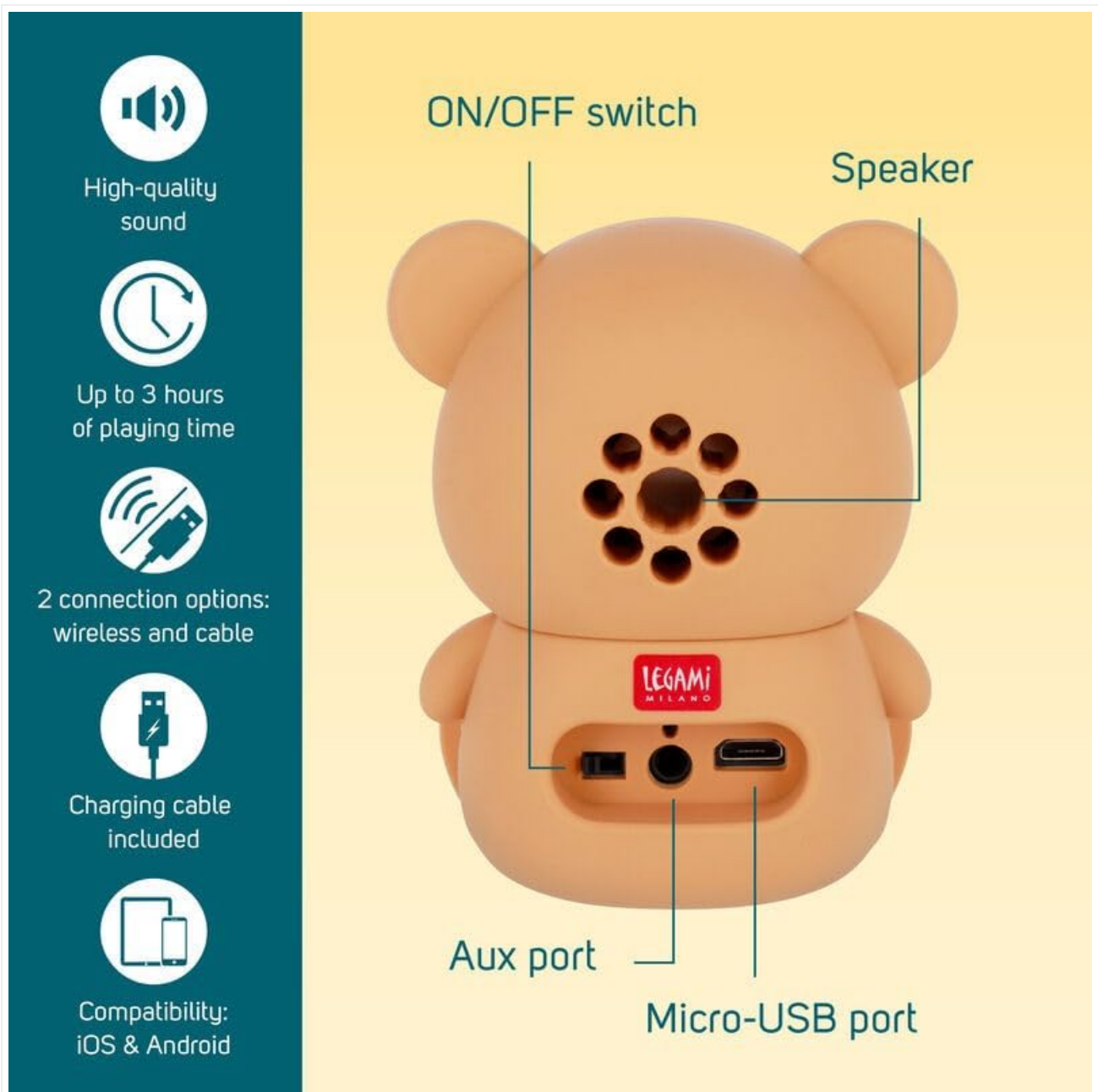


Image 2.1: The ON/OFF switch is located on the rear panel of the speaker.

## 2.2 Bluetooth Pairing

Connect your smartphone or other Bluetooth-enabled device to the speaker wirelessly.

1. Ensure the speaker is powered on. It will automatically enter pairing mode.
2. On your device (smartphone, tablet, laptop), enable Bluetooth.
3. Search for available Bluetooth devices. The speaker will appear as "Legami Speaker" or similar.
4. Select the speaker from the list to pair. A confirmation sound may play upon successful connection.
5. Once paired, you can play audio from your device through the speaker.

**Compatibility:** This speaker is compatible with all devices featuring wireless technology, including iOS and Android smartphones and tablets.

## 2.3 Wired Connection (Aux Port)

For devices without Bluetooth or for a wired connection, use the Aux port.

1. Ensure the speaker is powered on.

2. Connect a 3.5mm audio cable (not included) from your device's headphone jack to the Aux port on the back of the speaker.
3. Play audio from your device. The speaker will automatically switch to Aux input.

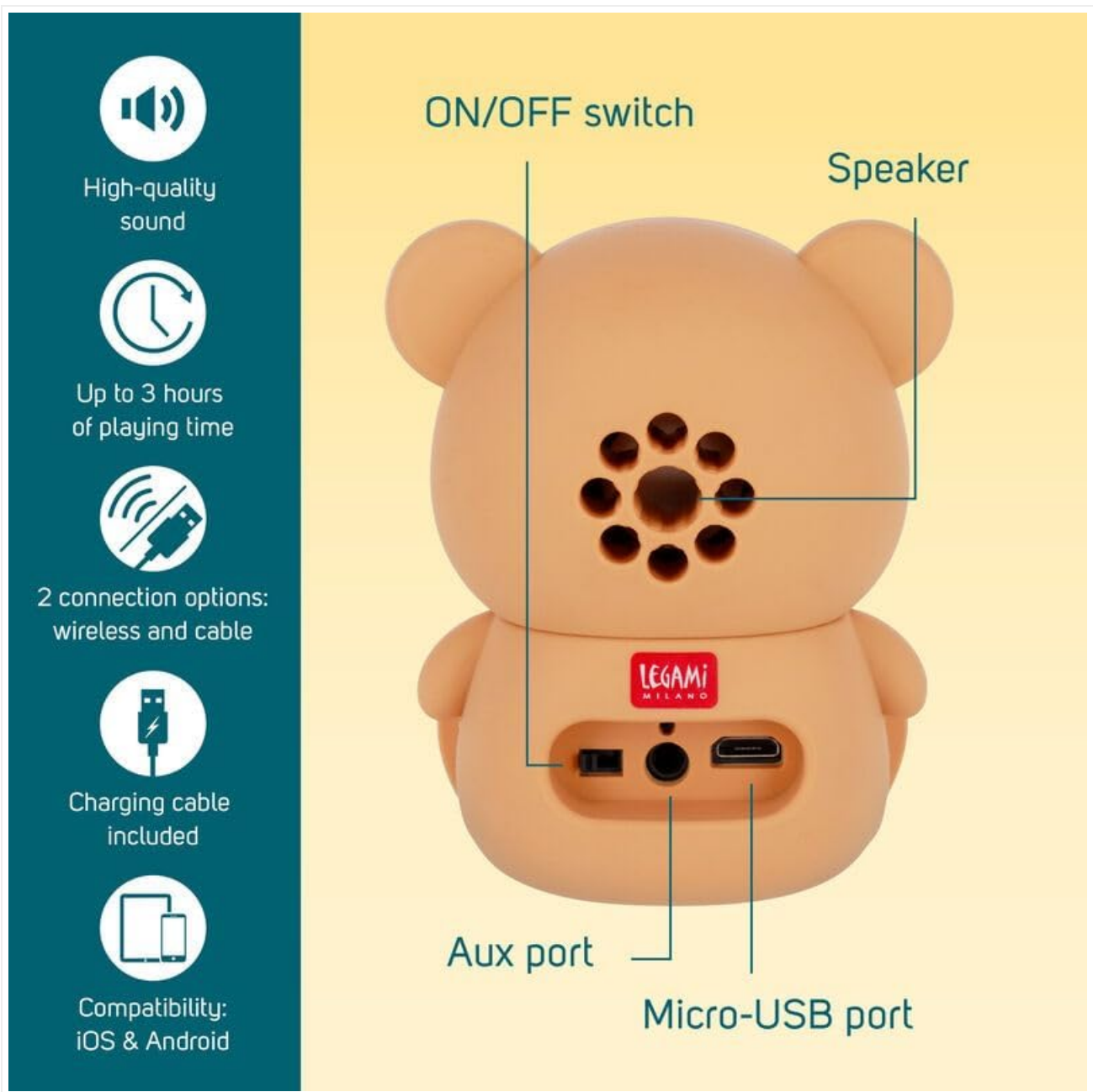


Image 2.2: The Aux port is located next to the Micro-USB port on the speaker's rear.

## 2.4 Using as a Phone Stand

The speaker is designed to function as a convenient phone stand.

- Position your smartphone or tablet between the speaker's paws.
- The speaker's design provides a stable base for viewing content.

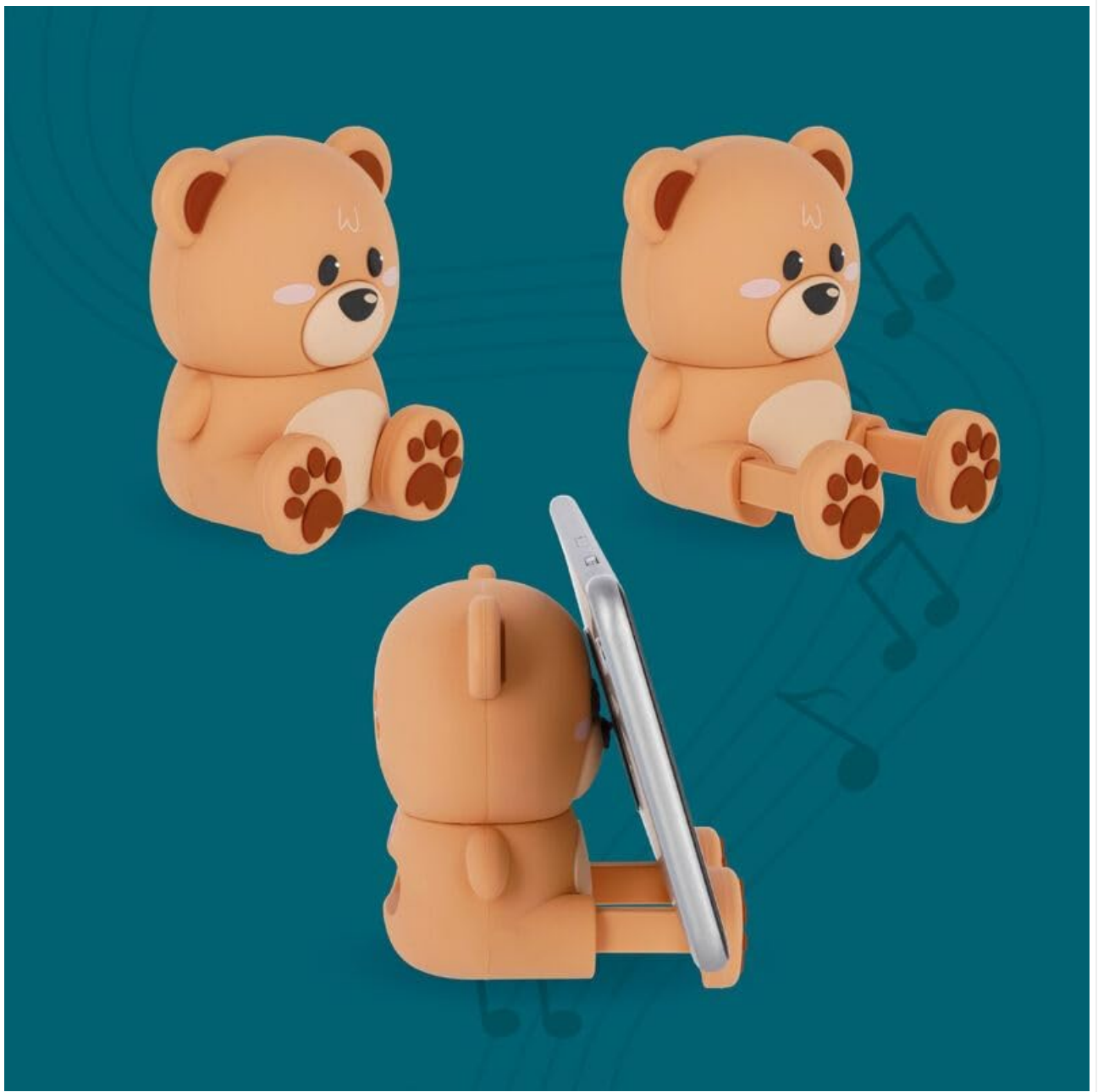


Image 2.3: A smartphone is securely placed in the speaker's integrated stand.





Image 2.4: Various angles showing the speaker's phone stand capability.

## 3. MAINTENANCE

---

### 3.1 Cleaning

To maintain the appearance and functionality of your speaker:

- Ensure the speaker is powered off and disconnected from any power source before cleaning.
- Wipe the surface with a soft, dry, or slightly damp cloth.
- Do not use abrasive cleaners, solvents, or harsh chemicals, as these may damage the finish.
- Avoid getting moisture into any ports or openings.

### 3.2 Storage

When not in use for extended periods:

- Store the speaker in a cool, dry place, away from direct sunlight and extreme temperatures.
- Keep it away from dust and moisture.

## 4. TROUBLESHOOTING

---

If you encounter issues with your speaker, refer to the following common problems and solutions:

Problem	Possible Solution
Speaker does not turn on.	<ul style="list-style-type: none"><li>• Ensure the battery is charged. Connect the speaker to a power source using the USB cable.</li><li>• Check if the ON/OFF switch is in the "ON" position.</li></ul>
Cannot pair via Bluetooth.	<ul style="list-style-type: none"><li>• Ensure the speaker is powered on and within range (typically 10 meters).</li><li>• Make sure Bluetooth is enabled on your device.</li><li>• If previously paired, try "forgetting" the device on your phone's Bluetooth settings and re-pairing.</li><li>• Ensure no other device is currently connected to the speaker.</li></ul>
No sound from the speaker.	<ul style="list-style-type: none"><li>• Check the volume level on both the speaker and your connected device.</li><li>• Ensure the speaker is correctly paired via Bluetooth or connected via the Aux cable.</li><li>• If using Aux, ensure the cable is fully inserted into both the speaker and your device.</li></ul>
Poor sound quality.	<ul style="list-style-type: none"><li>• Move the speaker closer to your Bluetooth device to reduce interference.</li><li>• Ensure there are no obstructions between the speaker and your device.</li><li>• Try a different audio source or file.</li></ul>

## 5. SPECIFICATIONS

Feature	Detail
Model Number	SPS0002
Brand	LEGAMI
Dimensions (L x W x H)	6 cm x 5 cm x 8 cm
Material	Plastic
Connectivity Technology	Bluetooth, USB (for charging)
Wireless Communication Technology	Bluetooth
Power Source	Cable Electric (Rechargeable via USB)
Speaker Size	6 Centimeters
Audio Output Mode	Stereo
Special Features	Wireless, Phone Stand Function
Recommended Uses	For smartphone or tablet
Compatible Devices	Desktop computer, Laptop, Smartphone, Tablet
Play Time	Up to 3 hours

## 6. WARRANTY AND SUPPORT

This product comes with a manufacturer's warranty.









- **Manufacturer Warranty:** 2-year manufacturer warranty.
- For further support, product information, or warranty claims, please visit the official Legami store or contact their customer service.
- [Visit the Legami Brand Store](#)



© 2023 LEGAMI. All rights reserved.

Related Documents - SPS0002

	<p><a href="#">Legami Super Fast Wireless Smartphone Charger WCHAR0001 User Manual and Specifications</a></p> <p>Comprehensive user manual and technical specifications for the Legami Super Fast Wireless Smartphone Charger (Model WCHAR0001), covering setup, usage, safety guidelines, and regulatory compliance information.</p>
	<p><a href="#">Legami Wireless Mouse User Manual and Specifications</a></p> <p>This document provides technical specifications, usage instructions, safety guidelines, and disposal information for the Legami Wireless Mouse. It covers setup, operation, battery replacement, and regulatory compliance.</p>
	<p><a href="#">Legami PAL0001 Personal Safety Alarm with LED Light User Manual</a></p> <p>User manual for the Legami PAL0001 Personal Safety Alarm with LED Light, providing technical specifications, maintenance, safety instructions, and disposal information.</p>
	<p><a href="#">Invisible Ink Pen - User Manual and Safety Information</a></p> <p>Comprehensive user guide and safety instructions for the LEGAMI Invisible Ink Pen. Learn how to use the UV light to reveal secret messages, understand technical specifications, and follow important safety and disposal guidelines.</p>
	<p><a href="#">Legami Bilancio di Sostenibilità 2024: Impegno per un Futuro Responsabile</a></p> <p>Scopri il Bilancio di Sostenibilità 2024 di Legami S.p.A. SB. Un report completo sull'impegno aziendale verso l'ambiente, le persone e una governance trasparente.</p>
	<p><a href="#">LEGAMI FLF0004 Fluffy Pencil Peacock - Specifications and Details</a></p> <p>Detailed specifications for the LEGAMI FLF0004 Fluffy Pencil Peacock, including its type, materials, general use, and dimensions. SKU: IT46599.</p>

