

[Manuals.plus](#) /

> [XENOCAM](#) /

> Xenocam Smart Lock XX01: Fingerprint Keyless Entry Deadbolt User Manual

XENOCAM DS01

Xenocam Smart Lock XX01 User Manual

Model: DS01

INTRODUCTION

The Xenocam Smart Lock XX01 offers a secure and convenient 5-in-1 keyless entry solution for your home or office. This manual provides detailed instructions for installation, operation, maintenance, and troubleshooting to ensure optimal performance and security.

The lock supports multiple unlocking methods including 360° fingerprint ID, smartphone app control, anti-peep keypad, IC card fob, and traditional mechanical key. It is designed for various applications such as home interior doors, office interior doors, hotel apartment doors, and entry doors.

APPLICABLE SCENE

Home office hotel practical and convenient



home interior door



office interior door



hotel apartment door



Entry door lock

Figure 1: Applicable scenes for the Xenocam Smart Lock, demonstrating its versatility for various door types.

PACKAGE CONTENTS

Before beginning installation, please verify that all components are present:

- Front Lock Panel
- Rear Lock Panel
- Lock Body (Deadbolt Latch)
- Mounting Plate (Gasket)
- Gusset Plate
- Buckle Shell
- Screws (various sizes)
- IC Cards (Fobs)
- Mechanical Keys

PRODUCT STRUCTURE



Figure 2: Detailed view of the product structure and included components.



THICKEN, STRENGTHEN, REINFORCE

Not afraid of violent knocking and picking locks, thieves can't open them violently. Ensure the high strength of the lock body, protect the safety of the home

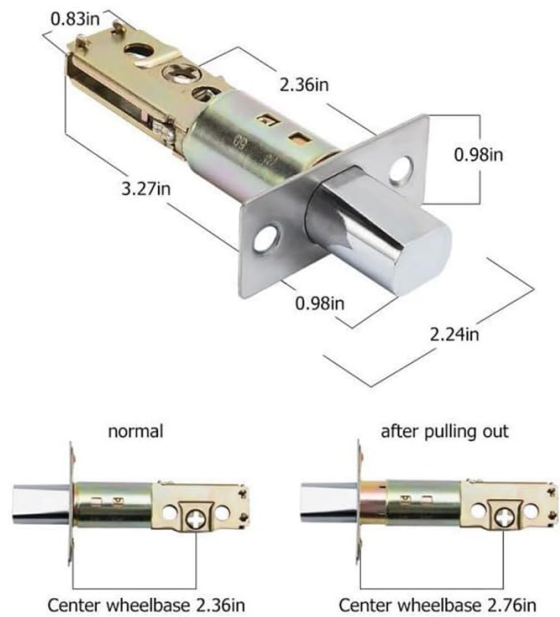


Figure 3: Lock body dimensions and adjustable latch mechanism for enhanced security.

INSTALLATION GUIDE

This section provides step-by-step instructions for installing your Xenocam Smart Lock. Ensure your door thickness is between 35-85mm for proper fitment. For visual guidance, please refer to the installation video below.

Installation Video Tutorial

Your browser does not support the video tag.

Video 1: Smart Lock Installation Tutorial. This video demonstrates the complete installation process for the Xenocam Smart Lock.

Step-by-Step Instructions:

1. **Prepare the Lock:** Open the rear lock battery case cover.
2. **Install the Lock Body:** Insert the lock body into the door edge. Secure it by unscrewing the lock body with the provided screws.
3. **Install the Front Lock:** Keep the lock cylinder ruler in a vertical position. Carefully pass the data line through the door hole first to prevent damage. Insert the front lock into the door.
4. **Install the Mounting Plate:** Place the bottom mounting plate over the lock cylinder and secure it with the opposite-pull screws.
5. **Connect Data Cables:** Connect the data cables from the front lock to the rear lock. Arrange any excess data lines neatly into the door seam.
6. **Install the Rear Lock:** Align the rear lock with the lock cylinder and mounting plate. Ensure the knob is correctly oriented (vertical for left-opening doors, horizontal for right-opening doors). Secure the rear lock by installing the rear locking screws.

7. **Install Batteries:** Insert four AAA alkaline batteries into the battery compartment.
8. **Close Battery Cover:** Put the battery case cover back on.
9. **Test Lock Switch:** Test the lock switch to ensure correct left and right directions. Check the knob for smooth operation.



Figure 4: The lock is designed for easy replacement of existing ball lock latches.

OPERATING INSTRUCTIONS

The Xenocam Smart Lock offers five methods for unlocking your door:

5 Ways TO Unlock



Figure 5: The five primary methods for unlocking your smart lock.

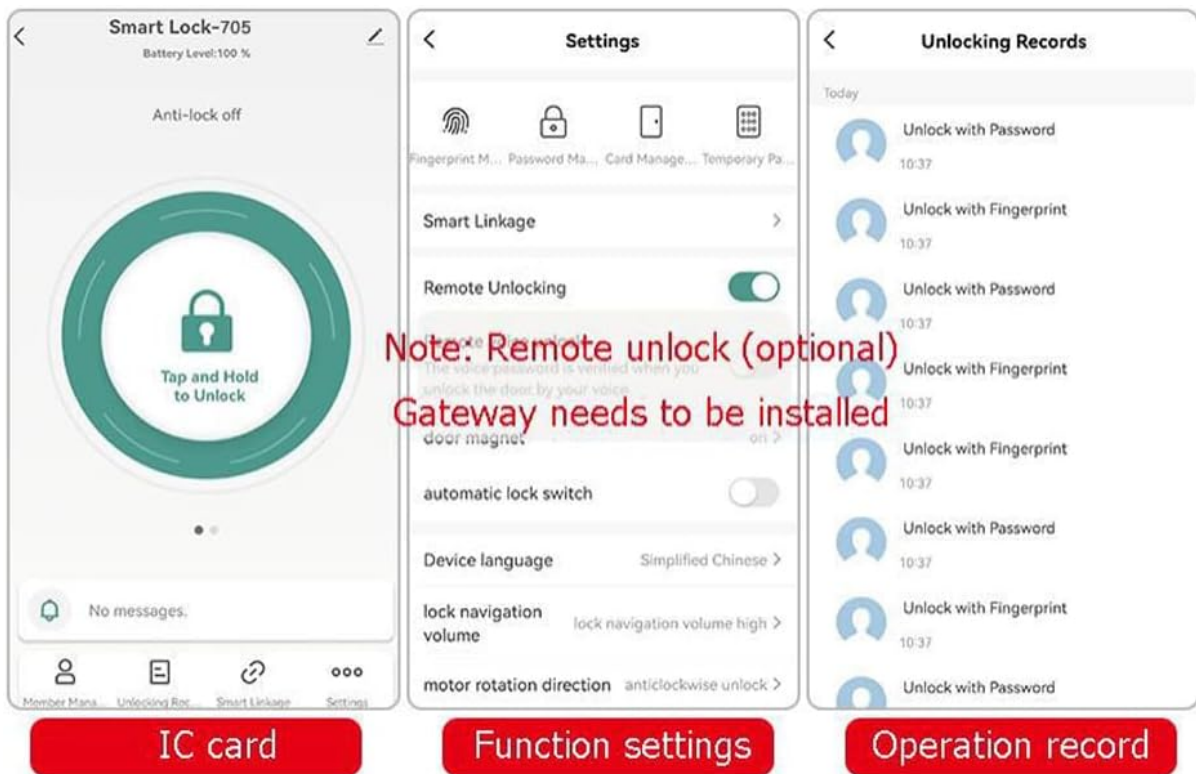
1. Fingerprint Unlock

- Place your registered finger on the fingerprint sensor. The lock will recognize your fingerprint in approximately 0.3 seconds and unlock the door.
- The lock supports 360° fingerprint ID for quick and reliable access.

2. App Control (Tuya or TT App)

Control your smart lock remotely via your smartphone using the Tuya or TT app. This feature allows for advanced access management and real-time monitoring.

- **Remote Unlocking:** Generate eKeys and grant access to visitors from anywhere.
- **User Management:** Create up to 200 user codes (temporary or permanent) for family, friends, or guests.
- **Real-Time Notifications:** Receive alerts on your phone regarding lock activity and view the event history.
- **Auto-Lock:** Set the lock to automatically lock after a specified period via the app.
- **One-Touch Auto-Lock:** Press and hold any key on the keypad for 2 seconds to instantly lock the door.



SMART LIFE STARTS WITH A LOCK

Open door information, APP pushes at any time, built-in high-security network module and perfect system, grasp the door lock status at any time



Figure 6: App interface for managing your smart lock, including temporary passwords and fingerprint users.

3. Anti-Peep Keypad

- Enter your passcode followed by the '#' key.
- To prevent others from guessing your code, you can enter random digits before or after your actual

passcode. For example, if your code is 123456, you can enter 987123456098#.

4. IC Card (Fob) Unlock

- Present a registered IC card to the card reader area on the lock. The lock will beep and unlock.
- IC cards are easy to manage and can be used by individuals who may have difficulty with fingerprints, such as children or the elderly.

IC CARD TO OPEN THE DOOR EASILY

Encrypted smart IC card is easy to manage, safe and convenient
It can be easily used by the elderly and children with incomplete fingerprints



Figure 7: Using an IC card for convenient door access.

5. Mechanical Key Unlock

- In case of emergency or battery depletion, use the provided mechanical key to unlock the door manually.

Automatic Locking Feature

The lock is equipped with an automatic locking mechanism. After closing the door, the deadbolt will automatically extend, securing your home without manual intervention.

CLOSE THE DOOR AUTOMATICALLY

After closing the door, the lock tongue automatically pops up, and it is safe and worry-free



Figure 8: The smart lock automatically secures the door upon closing.

MAINTENANCE

Proper maintenance ensures the longevity and reliable operation of your smart lock.

Battery Management

- The lock operates on 4 AAA alkaline batteries, providing up to 1 year of battery life under normal usage.
- A low-battery reminder will alert you when the batteries need replacement. Replace all four batteries simultaneously for best performance.
- **Emergency Power:** In case of complete battery depletion, a Type-C emergency boot option is available. Connect a power bank to the Type-C port on the front panel to temporarily power the lock and gain access. *Note: The battery must be removed for charging if using rechargeable batteries.*

General Care

- Clean the lock's surface with a soft, dry cloth. Avoid using abrasive cleaners or solvents.
- Ensure the fingerprint sensor and keypad are free from dirt or debris for optimal recognition.
- Do not expose the lock to excessive moisture or direct water spray.

TROUBLESHOOTING

If you encounter issues with your Xenocam Smart Lock, refer to the following common problems and solutions:

Problem	Possible Cause	Solution
Lock does not respond	Dead batteries; Incorrect battery installation	Replace all 4 AAA batteries; Ensure batteries are inserted with correct polarity.
Fingerprint not recognized	Fingerprint sensor dirty; Unregistered fingerprint; Finger wet/damaged	Clean sensor; Register fingerprint via app; Ensure finger is clean and dry.
Keypad not responding	Keypad dirty; Incorrect code entered	Clean keypad surface; Re-enter correct code.
App connection issues	Bluetooth off; Lock out of range; App not updated	Ensure Bluetooth is on; Move closer to the lock; Update app to latest version.
Lock mechanism stiff	Improper installation; Door frame misalignment	Review installation steps (refer to video); Check door and frame alignment.
Alarm sounds unexpectedly	Tamper attempt; Multiple incorrect entries	Check for signs of tampering; Ensure correct entry methods are used.

If the problem persists after attempting these solutions, please contact customer support.

SPECIFICATIONS

Feature	Detail
Model Name	Smart Deadbolt Lock (DS01)
Brand	XENOCAM
Lock Type	Deadbolt
Unlocking Methods	Fingerprint, App Control, Keypad, IC Card, Mechanical Key
Material	Metal
Color	Black
Door Thickness Compatibility	35-85mm
Power Source	4 x AAA Alkaline Batteries (not included)
Emergency Power	Type-C USB Port
Connectivity	Bluetooth

Feature	Detail
Item Dimensions (L x W x H)	2.56 x 6.54 x 1.55 inches
Item Weight	2.2 Pounds

WARRANTY AND SUPPORT

Xenocam products are designed for reliability and performance. For specific warranty details, please refer to the warranty card included with your product or visit the official Xenocam website.

For technical assistance, troubleshooting, or any questions regarding your smart lock, please contact Xenocam customer support through the contact information provided on the product packaging or the official website. Please have your model number (DS01) and purchase details ready when contacting support.