

VOYOR TX310

VOYOR TX310 Electric Foil Shaver User Manual

Model: TX310 | Brand: VOYOR

1. INTRODUCTION

Thank you for choosing the VOYOR TX310 Electric Foil Shaver. This manual provides essential information for the safe and effective use of your new shaver. Please read it thoroughly before operation and retain it for future reference.



Figure 1: VOYOR TX310 Electric Foil Shaver with its packaging.

2. SAFETY INFORMATION

Potential safety warnings include the risk of cuts or skin irritation, the need for proper cleaning and care, precautions for using the shaver near water, and safe charging practices.

3. PRODUCT FEATURES

- **Triple Floating Blades:** Features two floating blade nets and a shark-tooth trimmer for precise contouring and efficient shaving of various hair lengths.
- **Strong Power:** Delivers a maximum speed of 7500RPM for fast and effective shaving.
- **Long Battery Life & USB-C Charging:** Provides 1 hour of use after 1.5 hours of charging. Supports USB-C charging from various sources.
- **IPX6 Waterproof Design:** Fully washable body for easy cleaning under running water.
- **T-shaped Ergonomic Design:** Lightweight and comfortable for enhanced handling and reduced travel burden.

ELECTRIC RAZOR FOR MEN

Delivers an exceptional shaving experience



Strong Power



Lightweight



Wet And Dry



Travel Lock



Fast Charging



Easy To Clean



Figure 2: Key features of the VOYOR TX310 Electric Foil Shaver.

3-BLADE SHAVING SYSTEM

Every swipe is a precise fit

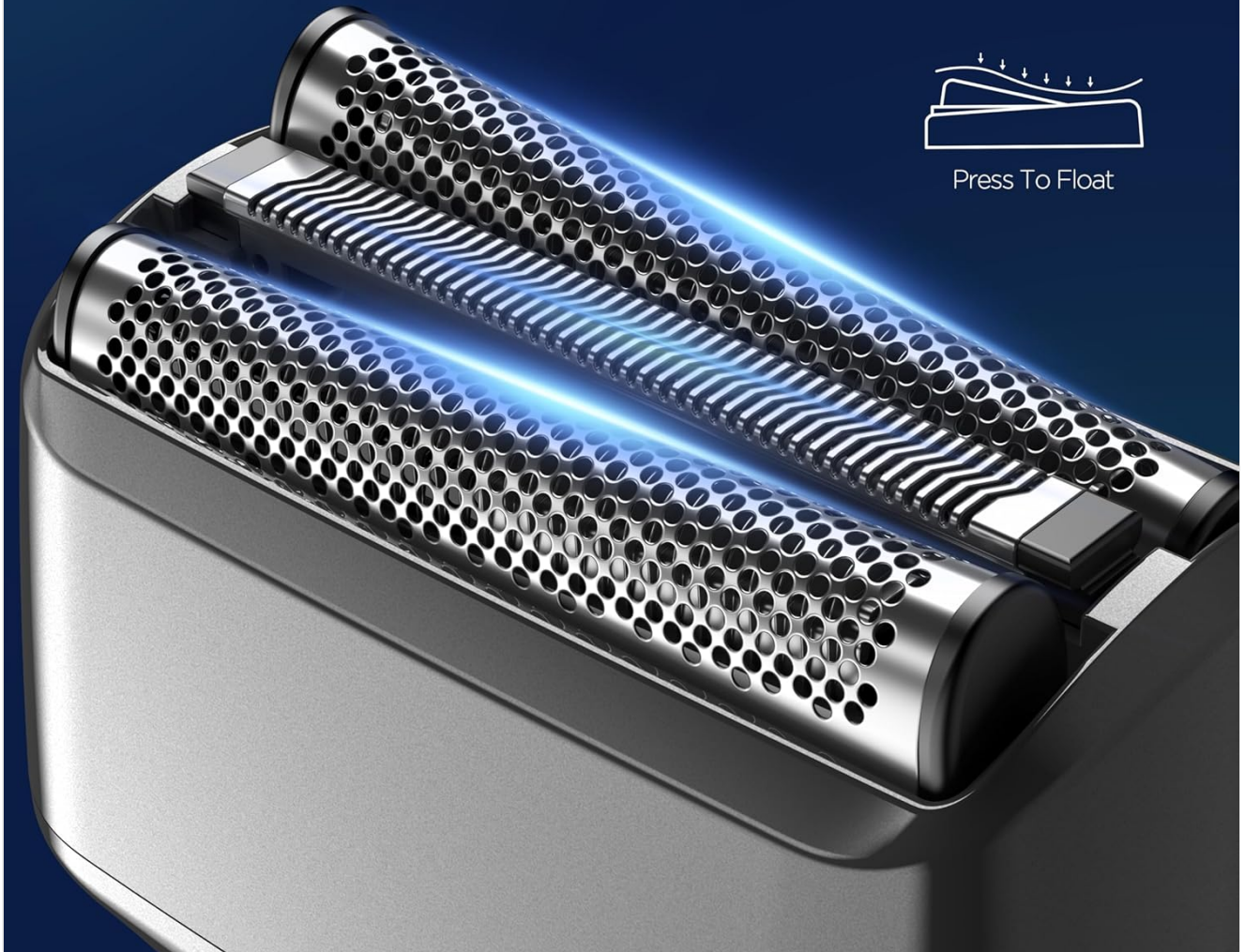


Figure 3: Detailed view of the 3-blade shaving system.

Video 1: Overview of the VOYOR TX310 electric razor features and design.

4. SETUP

Before first use, ensure the shaver is fully charged. Inspect the shaver head for any damage. Remove the protective cap from the shaver head.

ELECTRIC FOIL SHAVERS

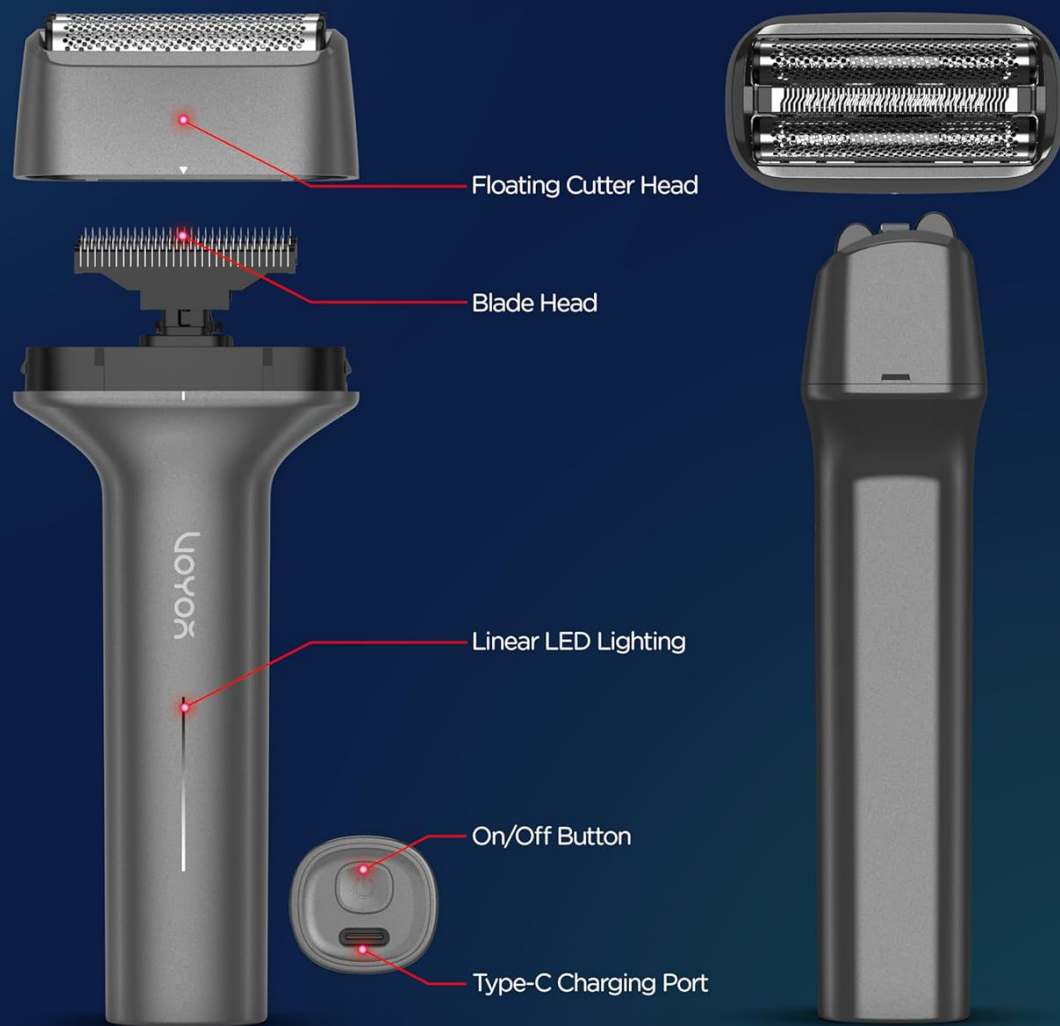


Figure 4: Exploded view of the VOYOR TX310 shaver components.

5. OPERATING INSTRUCTIONS

1. Fully charge the electric shaver before using it for the first time.
2. Wet your face or beard before shaving, or use it on a dry face according to your preference.
3. Press the power button to turn on the shaver.
4. Adjust the shaver head to fit the contours of your face.
5. Move the shaver gently across your skin in a circular motion.
6. Rinse the shaver head under running water when you're done shaving.
7. Turn off and unplug the shaver when not in use.
8. For charging, connect the USB charging cable to a power source and plug it into the shaver.

FREELY SWITCH BETWEEN WET AND DRY SHAVING



WET

More comfortable for the skin



DRY

More comfortable for the skin

Figure 5: The VOYOR TX310 supports both wet and dry shaving.

Video 2: Demonstration of the VOYOR TX310 Foil Shaver in use.

6. MAINTENANCE AND CLEANING

The shaver head can be easily disassembled for simple rinsing under water. Use the included cleaning brush to remove any trapped hairs from the blades. Ensure the shaver is dry before reattaching the protective cap and storing.

REPLACEABLE CUTTER HEAD

The blade head is detachable, making it easy to replace and clean



Figure 6: Cleaning the replaceable cutter head.

Video 3: Demonstration of the VOYOR TX310 Floating Foil Shaver's cleaning process.

7. CHARGING

The VOYOR TX310 is equipped with a rechargeable battery that provides approximately 1 hour of use after a 1.5-hour charge. It utilizes a USB-C charging method, allowing convenient charging via a laptop, car charger, USB wall adapter, or mobile phone. The device features a linear LED lighting indicator to show charging status.

8. TROUBLESHOOTING

- **Shaver not turning on:** Ensure the battery is charged. If the issue persists, contact customer support.
- **Poor shaving performance:** Clean the shaver head thoroughly. Ensure hair is trimmed to a manageable length before using the foil shaver.
- **Skin irritation:** Ensure the shaver head is clean. Use the shaver gently and consider using it with shaving cream or gel for wet shaving.

9. SPECIFICATIONS

Feature	Detail
Model Name	TX310
Power Source	Battery Powered
Special Features	Cordless, Detachable Head, Fast Charging, Travel Lock, Washable
Recommended Uses	Beard, Chest, Face, Leg, Mustache
Product Dimensions	4.25 x 1.5 x 5.98 inches; 4.59 ounces
Batteries	1 Lithium Ion battery required (included)
Waterproof Rating	IPX6

10. WARRANTY AND SUPPORT

For warranty information or technical support, please refer to the documentation included with your product or contact VOYOR customer service directly. Keep your purchase receipt for warranty claims.

11. LEGAL DISCLAIMER

Statements regarding dietary supplements have not been evaluated by the FDA and are not intended to diagnose, treat, cure, or prevent any disease or health condition.

