

wolezek BL-B20A-2

wolezek BL-B20A-2 65-inch Full Spectrum LED Grow Light Instruction Manual

Model: BL-B20A-2

1. INTRODUCTION AND OVERVIEW

Thank you for choosing the wolezek BL-B20A-2 65-inch Full Spectrum LED Grow Light. This product is designed to provide optimal lighting conditions for your indoor plants, promoting healthy growth and higher yields. Featuring 80 high-efficiency LEDs, a 360° adjustable gooseneck, multiple color modes, dimmable brightness levels, and an integrated timer, this grow light offers versatility and ease of use for various plant types and growth stages.

2. PRODUCT FEATURES

- **Taller and More Stable Design:** This 65-inch grow light provides a taller and more stable structure, ensuring the LED grow light stands securely and can be positioned at the ideal height for your plants.
- **Adjustable 360° Gooseneck:** The flexible gooseneck allows for easy adjustment of the light's angle and direction, ensuring comprehensive light coverage for all parts of your plants.
- **Programmable Lighting Timer:** Equipped with a 6/12/16-hour timer, allowing you to set consistent and uninterrupted light cycles tailored to your plants' specific needs.
- **3 Color Modes & 5 Brightness Levels:** Offers three color temperature options (6500K, 3000K, and 500K) to support different plant growth stages, along with five dimmable brightness levels for customized light intensity.
- **High Efficiency 80 LEDs:** Utilizes 80 LEDs to deliver a powerful and efficient light source, promoting robust plant growth.

3. PACKAGE CONTENTS

Please ensure all components are present before assembly:

- LED Grow Light Head with Gooseneck
- Extendable Pole (with pointed tip for pot insertion)
- Control Panel with USB Cable
- User Manual (this document)

4. SETUP INSTRUCTIONS

1. **Assemble the Pole:** Gently twist the extendable pole sections together until securely connected.
2. **Attach the Light Head:** Screw the gooseneck of the LED grow light head onto the top of the assembled pole.
3. **Insert into Pot:** Carefully insert the pointed end of the pole into the soil of your plant pot. Ensure it is stable and upright. *Note: This product is designed for direct insertion into a plant pot and does not include a floor-standing base.*
4. **Connect Power:** Plug the USB cable from the control panel into a compatible USB power adapter (not included) and then into a power outlet.
5. **Adjust Height and Angle:** Extend the pole to the desired height (up to 65 inches) and bend the 360° gooseneck to position the light directly over your plant.

3 Lighting Modes - More Flexibility and Adaptability



Image: Step-by-step guide for assembling and positioning the grow light in a plant pot.

5. OPERATING INSTRUCTIONS

The control panel on the USB cable allows you to manage all functions of your grow light:

- **Power On/Off:** Press the power button (**U**) to turn the light on or off.
- **Brightness Adjustment:** Use the brightness buttons (**+/-**) to cycle through 5 dimmable brightness levels (20%, 40%, 60%, 80%, 100%).
- **Color Mode Selection:** Press the color mode button (**C**) to switch between 3 color temperature options: 6500K (Natural White), 3000K (Warm White & Red), and 5000K (All Light On).
- **Timer Setting:** Press the timer button (**T**) to set the automatic shut-off timer for 6, 12, or 16 hours. The light will automatically turn on at the same time each day.



Image: Control panel illustrating timer settings (6H, 12H, 16H) and other functions.

6. LIGHT MODES AND BRIGHTNESS

The wolezek grow light offers customizable lighting to suit various plant needs:

- **Color Modes:**

- **6500K (Natural White):** Ideal for general plant growth, promoting photosynthesis.
- **3000K (Warm White & Red):** Beneficial for flowering and fruiting stages.
- **5000K (All Light On):** Full spectrum for all growth stages, mimicking natural sunlight.

- **Brightness Levels:** Adjust from 20% to 100% intensity to match your plant's light requirements and prevent scorching or insufficient light.



Image: Visual representation of the three available lighting modes for different plant needs.

Easy to Use

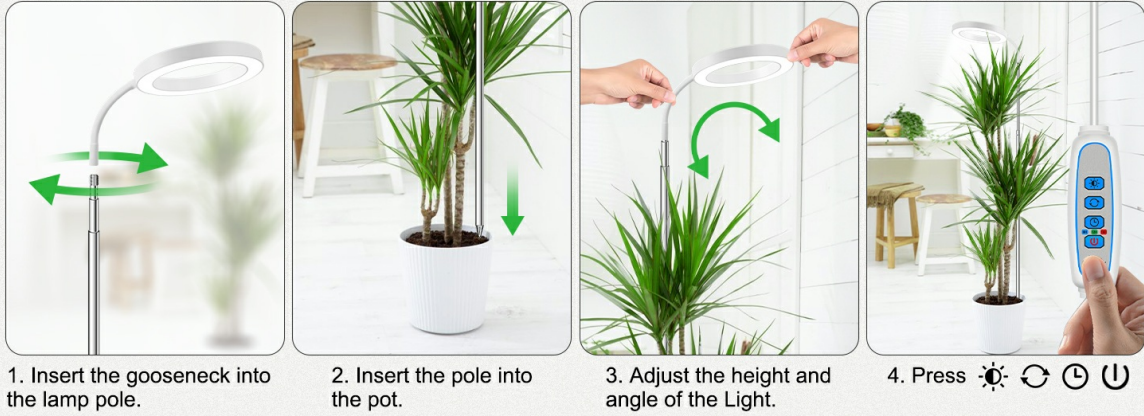


Image: Illustration of five distinct brightness levels from 100% to 20% for light intensity control.

7. HEIGHT AND ANGLE ADJUSTMENT

The grow light is designed for maximum flexibility to accommodate plants of various sizes:

- **Adjustable Height:** The telescopic pole can be extended from approximately 10 inches up to 65 inches, allowing you to position the light at the optimal distance from your plant's canopy as it grows.
- **Flexible Gooseneck:** The gooseneck connecting the light head to the pole can be bent 360 degrees, enabling precise targeting of light to specific areas of your plant or to multiple plants if positioned strategically.

Adjustable Height 10inch - 65 inch



Image: Demonstrates the adjustable height feature of the grow light, accommodating plants from 10 to 65 inches tall.

Your browser does not support the video tag.

Video: A demonstration of the wolezek grow light's adjustable height feature, showing how it can be extended to illuminate tall plants.

8. MAINTENANCE

To ensure the longevity and optimal performance of your wolezek grow light, follow these simple maintenance guidelines:

- **Cleaning:** Gently wipe the LED light surface and pole with a soft, dry cloth to remove dust. Do not use

liquid cleaners or abrasive materials.

- **Storage:** If storing the light for an extended period, ensure it is clean, dry, and stored in a cool, dry place away from direct sunlight.
- **Cable Care:** Avoid bending or crimping the power cable excessively. Ensure it is not placed under heavy objects or in areas where it could be tripped over.

9. TROUBLESHOOTING

If you encounter any issues with your grow light, please refer to the following common solutions:

- **Light Not Turning On:**

- Check if the USB cable is securely plugged into both the power adapter and the light's control panel.
- Ensure the power adapter is correctly plugged into a functional wall outlet.
- Press the power button on the control panel.

- **Timer Not Working Correctly:**

- Verify that the desired timer duration (6, 12, or 16 hours) is selected on the control panel. The corresponding indicator light should be on.
- If power is interrupted (e.g., power outage), the timer may need to be reset.

- **Light Intensity or Color Issues:**

- Use the brightness buttons to adjust the intensity.
- Use the color mode button to cycle through the available light spectrums.

- **Light is Unstable in Pot:**

- Ensure the pole is fully inserted into the soil and the soil is compact around the base.
- For very large or top-heavy plants, consider using a heavier pot or additional support for the plant itself.

If these steps do not resolve the issue, please contact wolezek customer support for further assistance.

10. SPECIFICATIONS

Feature	Specification
Brand	wolezek
Model Name	BL-B20A-2
Product Dimensions	5.91"D x 5.91"W x 62.99"H
Item Weight	1.69 pounds (0.77 Kilograms)
Light Source Type	LED
Number of Light Sources	80
Wattage	20.00W
Special Feature	Adjustable Height, Dimmable, Full Spectrum
Control Method	Remote (inline control panel)
Indoor/Outdoor Usage	Indoor use only
Material	Aluminum
Assembly Required	Yes

11. WARRANTY AND SUPPORT

wolezek is committed to providing comprehensive customer support for your product:

- **12-Month Warranty:** Your wolezek grow light is covered by a comprehensive 12-month warranty from the date of purchase. This warranty covers manufacturing defects and malfunctions under normal use.
- **Lifetime Support:** We offer lifetime technical support for all our products. If you have any questions or require assistance beyond the warranty period, please do not hesitate to contact us.
- **Personalized Help:** Our dedicated customer service team is available to provide personalized assistance for any product-related inquiries or issues.

For warranty claims or support, please visit the wolezek store on Amazon or contact us directly through the contact information provided with your purchase.