

## VOYOR TX310

# VOYOR TX310 Foil Shaver Electric Razor User Manual

Model: TX310

## 1. IMPORTANT SAFETY INFORMATION

Always dry the shaver thoroughly after use to prevent water damage. Ensure the shaver is turned off when not in use to conserve battery and prevent accidental cuts.

## 2. PRODUCT OVERVIEW

The VOYOR TX310 Foil Shaver is designed for efficient and comfortable shaving. It features a triple floating blade system, strong motor power, long battery life with USB-C charging, and an IPX6 waterproof design for easy cleaning. Its ergonomic T-shaped design ensures a comfortable grip.



Figure 1: VOYOR TX310 Foil Shaver and packaging. The shaver is a compact, T-shaped device with a foil head.

# EFFICIENT SHAVING EASILY ACHIEVE THE STYLE YOU WANT

High-speed precision stainless steel blades, experience clean and quick shaving



Three Floating  
Blades



Strong  
Power



Wet And  
Dry



IPX6  
Waterproof



Flexible Floating  
Blade Head



One Button  
Operation



Lightweight  
And Portable



Easy To  
Clean



Figure 2: Visual representation of key features including triple floating blades, strong power, wet and dry use, IPX6 waterproof, flexible floating blade head, one-button operation, lightweight and portable, and easy to clean.

## 3. COMPONENTS

The VOYOR TX310 Foil Shaver package includes:

- VOYOR TX310 Foil Shaver unit
- Protective Cover
- USB-C Charging Cable
- Cleaning Brush
- User Manual

## CLEAR PRODUCT STRUCTURE, EFFICIENT OPERATION



Figure 3: Exploded view of the shaver showing the protective cover, floating cutter head, blade head, linear LED lighting, on/off button, and Type-C charging port.

### 4. SETUP

1. **Initial Charge:** Fully charge the shaver before the first use. Connect the provided USB-C charging cable to the charging port at the bottom of the shaver and plug the other end into a compatible USB power source (e.g., laptop, car charger, USB wall adapter). The LED display will show charging progress. A full charge takes approximately 1.5 hours and provides about 1 hour of continuous use.
2. **Travel Lock:** To activate the travel lock, long press the power button for 3 seconds. This prevents accidental activation during travel. Long press again to unlock.

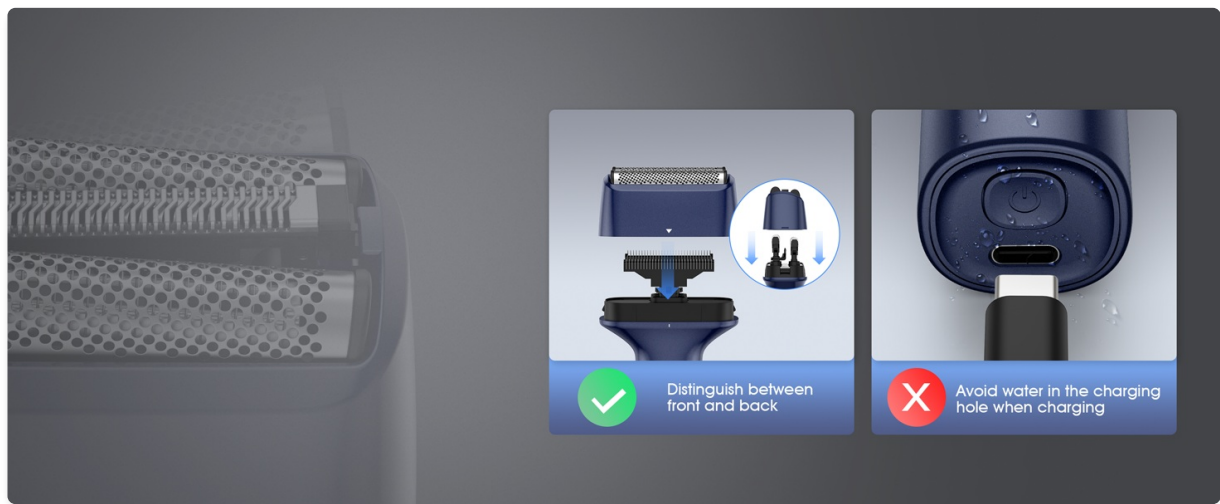


Figure 4: Illustration showing the correct way to attach the shaver head and a warning to avoid water in the charging port when charging. The travel lock feature is also indicated.

Video 1: A short demonstration of the VOYOR TX310 Foil Shaver, highlighting its compact design and ease of use. This video provides a visual guide to the product's basic functions and appearance.

## 5. OPERATING INSTRUCTIONS

1. **Preparation:** Ensure the shaving head is clean before use.
2. **Power On:** Press the power button to turn on the shaver. The LED display will show the battery percentage and current speed setting.
3. **Adjust Speed:** The shaver offers two speed settings. Press the power button again to toggle between them.
4. **Shaving:** Use gentle, circular motions to shave your face or body. The triple floating blades adapt to facial contours for an efficient and gentle shave, trimming long hairs and refining shorter stubble without pulling.
5. **Trimmer Function:** The shaver includes a pop-up trimmer for precise detailing. Push the trimmer switch to engage it for sideburns, mustache, or beard line adjustments.

## 3 FLOATING FLEXIBLE BLADES

Adapt to any facial contour, shave evenly, deep clean shave

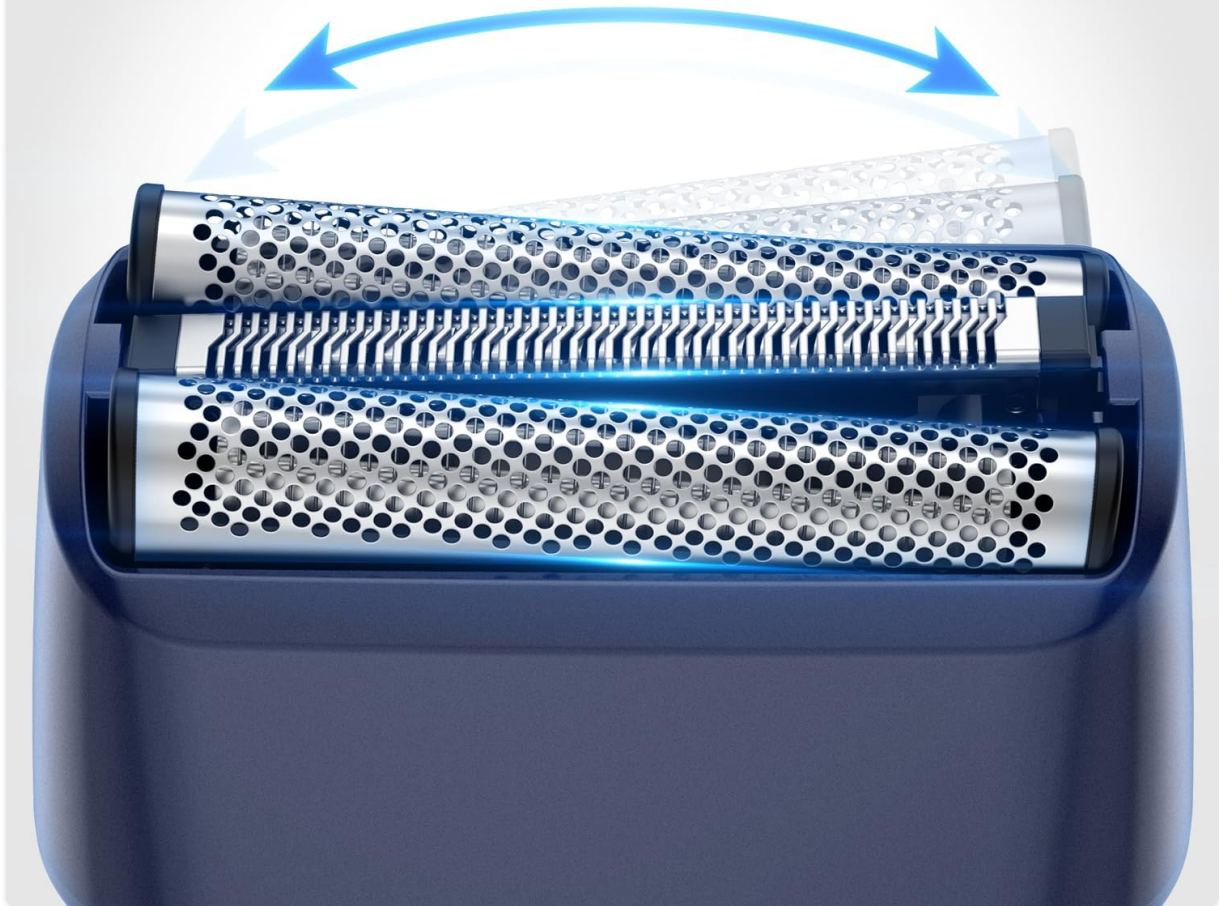
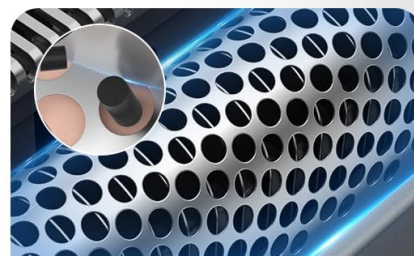
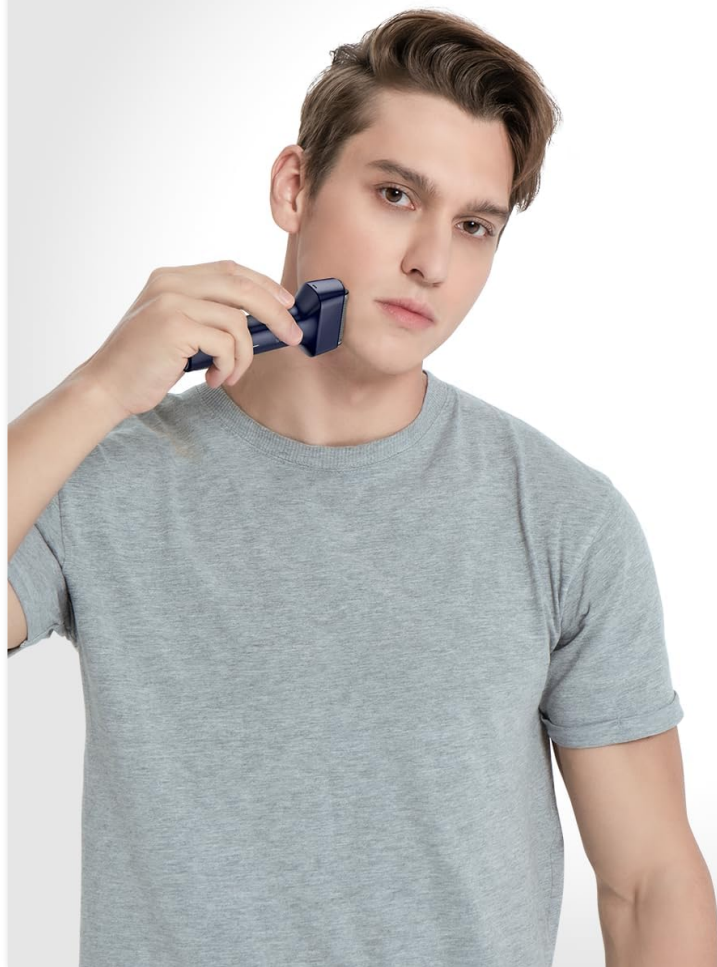


Figure 5: Close-up of the shaver head demonstrating the three floating flexible blades that adapt to facial contours for an even, deep clean shave.



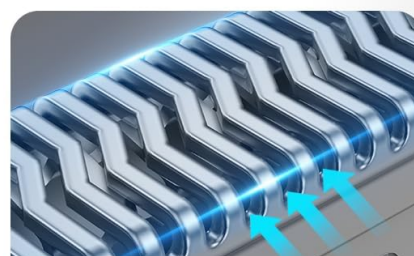
# TRIMMING AND SHAVING 2-IN-1

Deeply cuts off the root of the beard without leaving stubble



## Thin And Micro Blades

The combination of sharp blades and thin outer foil protects the skin and provides deep shaving



## Middle Seam Comb Blade

Multidirectional combing of long whiskers and cutting them short

Figure 6: Illustration of the shaver's 2-in-1 trimming and shaving capabilities, featuring thin and micro blades for deep shaving and a middle seam comb blade for longer whiskers.

Video 2: A demonstration of the VOYOR Floating Foil Shaver TX310 in action, showcasing its ability to provide a smooth shave. This video illustrates the shaver's performance on facial hair.

## 6. MAINTENANCE AND CLEANING

1. **After Use:** Rinse the shaving head with water after each use.
2. **Deep Cleaning:** The shaver head can be easily disassembled for thorough rinsing under running water. Use the provided cleaning brush to remove any trapped hairs from the blades and foils.
3. **Waterproof Design:** The VOYOR TX310 features an IPX6 waterproof design, allowing the entire body to be rinsed under water for convenient and fast cleaning.
4. **Lubrication:** Apply a small amount of lubricating oil to the blades periodically to maintain optimal performance and extend blade life.

# SELF-GRINDING TECHNOLOGY, CLEAN AND TIDY

Shaved beard is ground into powder and stored in the head cap, easier to clean up after shaving



Figure 7: Image illustrating the self-grinding technology, where shaved beard is ground into powder and stored in the head cap, making cleanup easier after shaving. A cleaning brush is also shown.



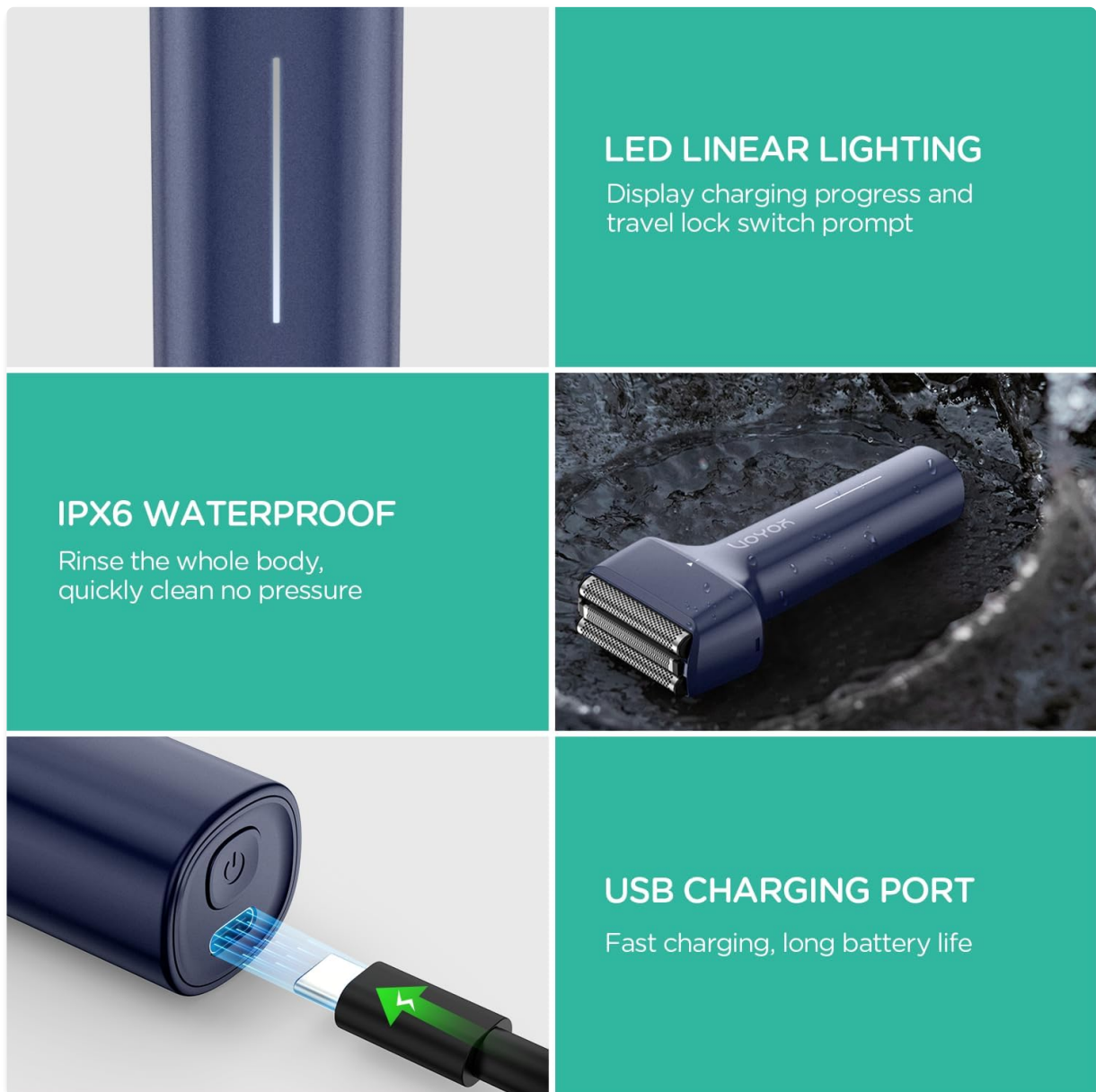


Figure 8: The shaver is shown under running water, demonstrating its IPX6 waterproof capability for easy cleaning.

Video 3: A general demonstration of an electric shaver's waterproof features and cleaning process. While this video is for a related product, the cleaning principles apply to the VOYOR TX310.

## 7. TROUBLESHOOTING

If your VOYOR TX310 Foil Shaver is not functioning as expected, consider the following:

- **Shaver Not Turning On:** Ensure the shaver is fully charged. Check the charging cable and power source. If the travel lock is activated, long press the power button for 3 seconds to unlock it.
- **Poor Shaving Performance:** Clean the shaving head thoroughly to remove any accumulated hair or debris. Ensure the blades are not dull; replacement blades may be available from the manufacturer.
- **Skin Irritation:** Ensure the blades are clean and sharp. Use the shaver on clean, dry skin or with shaving cream for wet shaving. Apply gentle pressure and avoid excessive passes over the same area.

If issues persist, please contact VOYOR customer support for further assistance.

## 8. SPECIFICATIONS

Feature	Detail
Model Name	TX310
Power Source	Battery Powered
Special Features	Triple floating blades, IPX6 waterproof design, USB-C rechargeable, Ergonomic T-shaped handle
Recommended Uses	Face, Beard, Mustache, Neck, Chin, Chest
Battery Type	1 Lithium Ion battery (included)
Charging Time	Approx. 1.5 hours
Continuous Usage Time	Approx. 1 hour
Product Dimensions	4.25 x 1.5 x 5.98 inches
Item Weight	4.59 ounces

## 9. WARRANTY AND SUPPORT

For warranty information and customer support, please refer to the documentation included with your product or visit the official VOYOR website. Contact details for support are typically provided in the user manual or on the product packaging.

## 10. LEGAL DISCLAIMER

Statements regarding dietary supplements have not been evaluated by the FDA and are not intended to diagnose, treat, cure, or prevent any disease or health condition.