

VOLT PLUS TECH YD03

VOLT PLUS TECH Pro Wireless Earbuds YD03 User Manual

Model: YD03

INTRODUCTION

Welcome to the user manual for your VOLT PLUS TECH Pro Wireless Earbuds, Model YD03. These earbuds feature advanced Bluetooth 5.3 connectivity, an intuitive LED digital display, IPX3 water and sweat resistance, noise reduction technology, and quad microphones for clear communication. This manual provides detailed instructions for setup, operation, maintenance, and troubleshooting to ensure optimal performance and longevity of your device.



Image: The VOLT PLUS TECH Pro Wireless Earbuds YD03, showing both earbuds and the charging case with its LED display.

WHAT'S IN THE BOX

Upon unboxing your VOLT PLUS TECH Pro Wireless Earbuds YD03, please ensure all the following components are present:

- VOLT PLUS TECH Pro Wireless Earbuds (Left and Right)
- Charging Case with Digital LED Display
- USB-C Charging Cable
- User Manual
- Ear Tips (Small, Medium, Large)

SETUP

1. Initial Charging

Before first use, fully charge the earbuds and the charging case.

1. Place both earbuds into the charging case.

2. Connect the USB-C charging cable to the charging port on the case and to a power source.
3. The LED digital display on the case will show the charging status. Ensure both earbuds and the case are fully charged for optimal battery life.

Micro faster charging, use longer

Comfortable
to wear

Improve charging time, fast life, greatly enhance the service life of the charging module, charge more quickly and safely.



Image: The charging case of the VOLT PLUS TECH Pro Wireless Earbuds YD03 connected to a USB-C charging cable, illustrating the charging process.

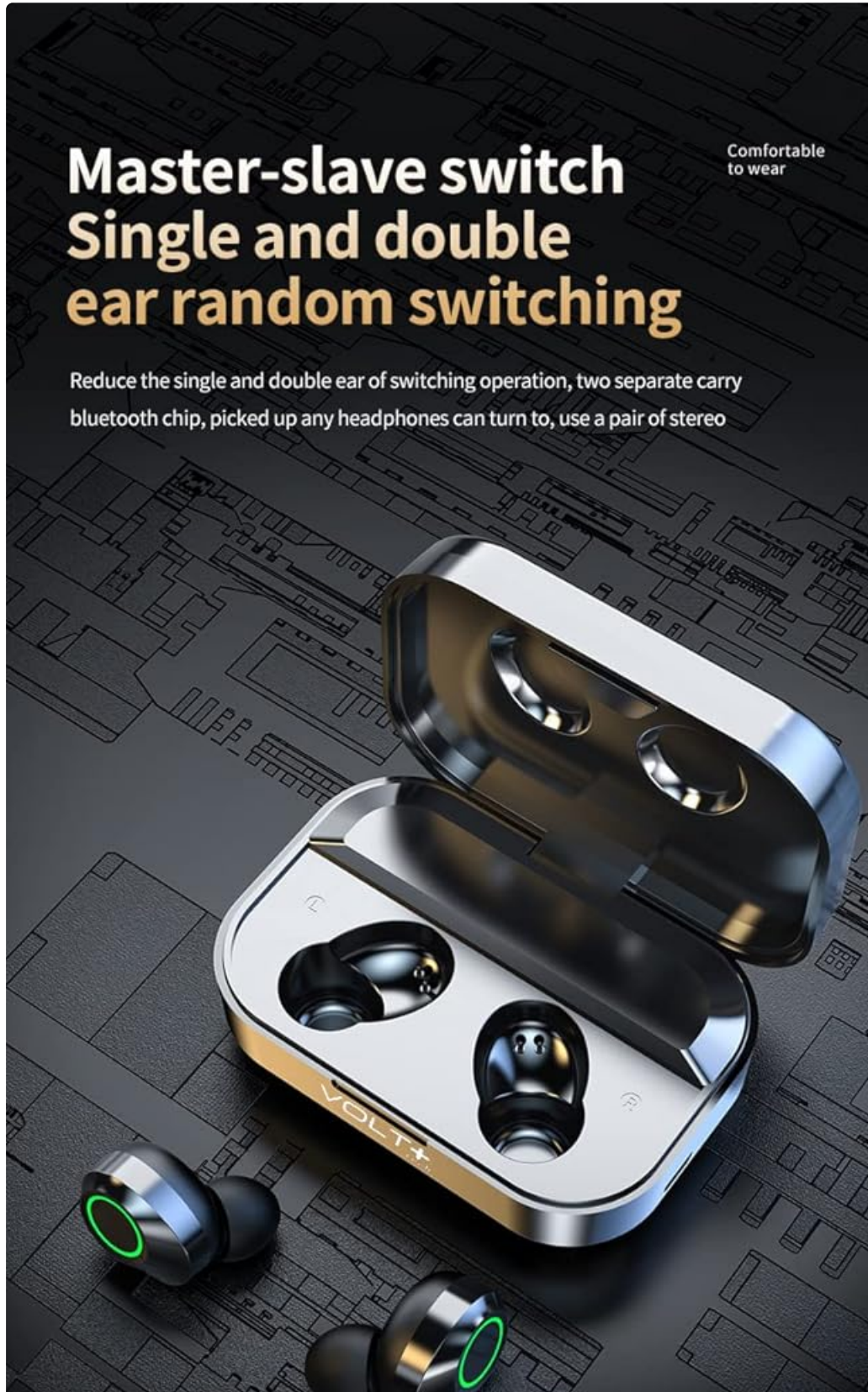
2. Power On

The earbuds will automatically power on when removed from the charging case. A blue indicator light will confirm they are on. If they do not power on automatically, press and hold the touch area on each earbud for 3-5 seconds until the blue indicator light flashes.

3. Bluetooth Pairing

Follow these steps to pair your earbuds with your device:

1. Ensure the earbuds are powered on and in pairing mode (indicator lights flashing).
2. On your smartphone or Bluetooth-enabled device, navigate to the Bluetooth settings.
3. Turn on Bluetooth.
4. Search for available devices and select "YD03" from the list.
5. Once connected, the earbuds will provide a voice prompt stating "Connected".



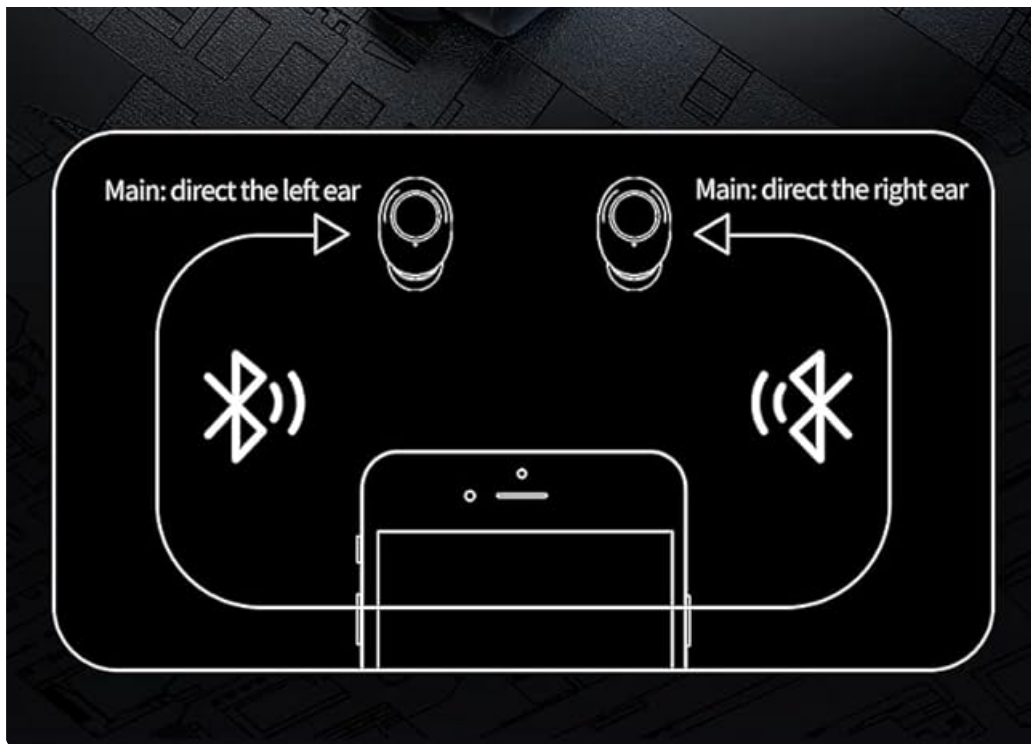


Image: Diagram illustrating the "Master-slave switch" functionality, showing how the VOLT PLUS TECH Pro Wireless Earbuds YD03 can be used individually or as a pair, and the Bluetooth pairing process.

4. Single Earbud Use

The earbuds support independent use. You can use either the left or right earbud individually. Simply remove one earbud from the case, and it will automatically connect to your previously paired device.

OPERATING INSTRUCTIONS

Touch Controls

The VOLT PLUS TECH Pro Wireless Earbuds feature intuitive touch controls on each earbud. The touch-sensitive area is located on the outer surface of each earbud.

- **Play/Pause:** Single tap on either earbud.
- **Next Song:** Double tap on the right earbud.
- **Previous Song:** Double tap on the left earbud.
- **Volume Up:** Triple tap on the right earbud.
- **Volume Down:** Triple tap on the left earbud.
- **Answer/End Call:** Single tap on either earbud during an incoming call.
- **Reject Call:** Press and hold either earbud for 1.5 seconds during an incoming call.
- **Activate Voice Assistant (Siri/Google Assistant):** Press and hold either earbud for 1.5 seconds (after rejecting a call or when not on a call).
- **Game/Video/Music Mode:** Touch switch under 4 (This instruction is unclear from the source, assuming it refers to a specific touch gesture or mode selection not fully detailed).

Dazzle colour light touch



L

Double-click on a song
Three strikes the volume



R

Double-click on the next
song
Three strikes the
volume reduction



L R

Long calls, short press the answer calls by a second reject

Even the touch
switch under 4
Games/music
/video mode

Short press 1

Play/pause

Long by 1.5 seconds

Called eSiri

Image: Visual guide detailing the touch controls for the VOLT PLUS TECH Pro Wireless Earbuds YD03, showing gestures for music playback, volume adjustment, and call management.

LED Digital Display

The charging case features an intelligent digital LED display that shows the battery level of the charging case and each individual earbud (Left 'L' and Right 'R'). This allows you to monitor power levels accurately.

AI light intelligent digital display without covering the clear at a glance



Upgrade LED light display, no need to open cover, about headphones
and charging tank remaining power be clear at a glance



The left ear
mechanical quantity

Tank battery
charging

The right amount of
mechanical and
electronic

Image: An illustration explaining the "AI light intelligent digital display" on the VOLT PLUS TECH Pro Wireless Earbuds YD03 charging case, indicating battery levels for the case and individual earbuds.

MAINTENANCE

Proper maintenance ensures the longevity and optimal performance of your earbuds.

- **Cleaning:** Regularly clean the earbuds and charging case with a soft, dry, lint-free cloth. Avoid using abrasive materials or harsh chemicals.
- **Water Resistance:** The earbuds are IPX3 water-resistant, meaning they are protected against spraying water. They are suitable for light rain, sweat, and splashes. **Note: The charging case is NOT waterproof.** Do not submerge the earbuds or the charging case in water.
- **Storage:** When not in use, store the earbuds in their charging case to protect them and keep them

charged. Store in a cool, dry place away from extreme temperatures.

- **Charging:** Use only the provided USB-C cable for charging. Avoid using damaged cables or chargers.

TROUBLESHOOTING

If you encounter issues with your earbuds, refer to the following common solutions:

1. Earbuds Not Pairing:

- Ensure both earbuds are fully charged.
- Make sure Bluetooth is enabled on your device.
- Turn off Bluetooth on your device, then turn it back on.
- Forget "YD03" from your device's Bluetooth list and attempt to pair again.
- Ensure no other Bluetooth devices are interfering.

2. No Sound or Low Volume:

- Check the volume level on both your earbuds (via touch controls) and your connected device.
- Ensure the earbuds are properly seated in your ears.
- Clean any debris from the earbud speakers.
- Reconnect the earbuds to your device.

3. Earbuds Not Charging:

- Ensure the charging cable is securely connected to both the case and the power source.
- Verify that the charging case has power (check its LED display).
- Make sure the earbuds are correctly placed in the charging case, and the charging contacts are clean.
- Try a different USB-C cable or power adapter.

4. One Earbud Not Working:

- Place both earbuds back into the charging case, close the lid, wait a few seconds, then take them out again.
- Ensure both earbuds are charged.
- Try resetting the earbuds (refer to the manufacturer's website if a specific reset procedure is available, as it's not detailed in the provided description).

SPECIFICATIONS

Feature	Detail
Model Name	YD03
Connectivity Technology	Wireless (Bluetooth)
Wireless Communication	Bluetooth 5.3
Headphones Jack	USB-C (for charging case)
Control Method	Touch, Media Control

Feature	Detail
Noise Control	Active Noise Cancellation (CVC 8.1)
Water Resistance Rating	IPX3 (Earbuds only)
Battery Life (Earbuds)	5+ hours (single charge)
Total Play Time (with case)	Up to 25+ hours
Charging Case Battery	2,000mAh
Material	ABS, Hi-Impact Plastic, Stainless Steel, Titanium
Item Weight	4 Ounces
Product Dimensions	1.5 x 1 x 1.5 inches
Frequency Response	48000 KHz

WARRANTY AND SUPPORT

Information regarding product warranty and customer support was not provided in the product details. For any warranty claims or technical assistance, please refer to the contact information provided with your purchase or visit the official VOLT PLUS TECH website.