

[manuals.plus](#) /

› [Rongta](#) /

› [Rongta Portable Printer Wireless for Travel,300DPI Bluetooth Inkless Thermal Printer, for Office/School/Home Use,Compatible with Android,iOS & Laptop,Support 8.5" X 11" US Letter Dark Grey User Manual](#)

Rongta PN81-Dark Grey

Rongta Portable Printer User Manual

Model: PN81-Dark Grey

1. INTRODUCTION

This manual provides detailed instructions for the operation, setup, maintenance, and troubleshooting of your Rongta Portable Printer. Please read this manual thoroughly before using the printer to ensure proper function and longevity.



Image: The Rongta Portable Printer, highlighting its 300DPI, A4/US Letter, and inkless capabilities.

2. KEY FEATURES

- **High Quality Print:** 300DPI resolution for clear and sharp documents.
- **Inkless Thermal Technology:** Eliminates the need for ink cartridges or ribbons, reducing operating costs.
- **Portable and Compact:** Lightweight design (approx. 2 lbs) for easy transport and use in various environments. Dimensions: 10.9" x 3.8" x 2.1".
- **Versatile Connectivity:** Supports Bluetooth for Android and iOS devices, and USB-C for Windows (7-11) and macOS laptops.
- **Wide Paper Compatibility:** Prints on 8.5" x 11" US Letter, A4 thermal papers, or 4-inch thermal paper rolls.
- **Long Battery Life:** Equipped with a 2600mAh battery for extended use.

Support 8.5"x11"

US Letter&A4 /110mm Width



Image: The portable printer in use with a laptop, demonstrating its compact size and suitability for mobile office environments.

3. SETUP GUIDE

3.1. Mobile Device Setup (Bluetooth)

1. **Download the "SoPrint" App:** Search for "SoPrint" in the Google Play Store (for Android) or Apple App Store (for iOS). Alternatively, scan the QR code provided on the product box.
2. **Enable Bluetooth:** Ensure Bluetooth is enabled on your mobile phone or tablet.
3. **Connect via App:** Open the "SoPrint" app. The app will automatically search for and display available printers. Select your Rongta printer (e.g., "PN81-DA20") to connect. *Note: Do not attempt to pair the printer directly through your phone's Bluetooth settings; connection must be initiated within the "SoPrint" app.*
4. **Start Printing:** Once connected, choose the file you wish to print from within the app.

Bluetooth Connect for Phone and Tablet

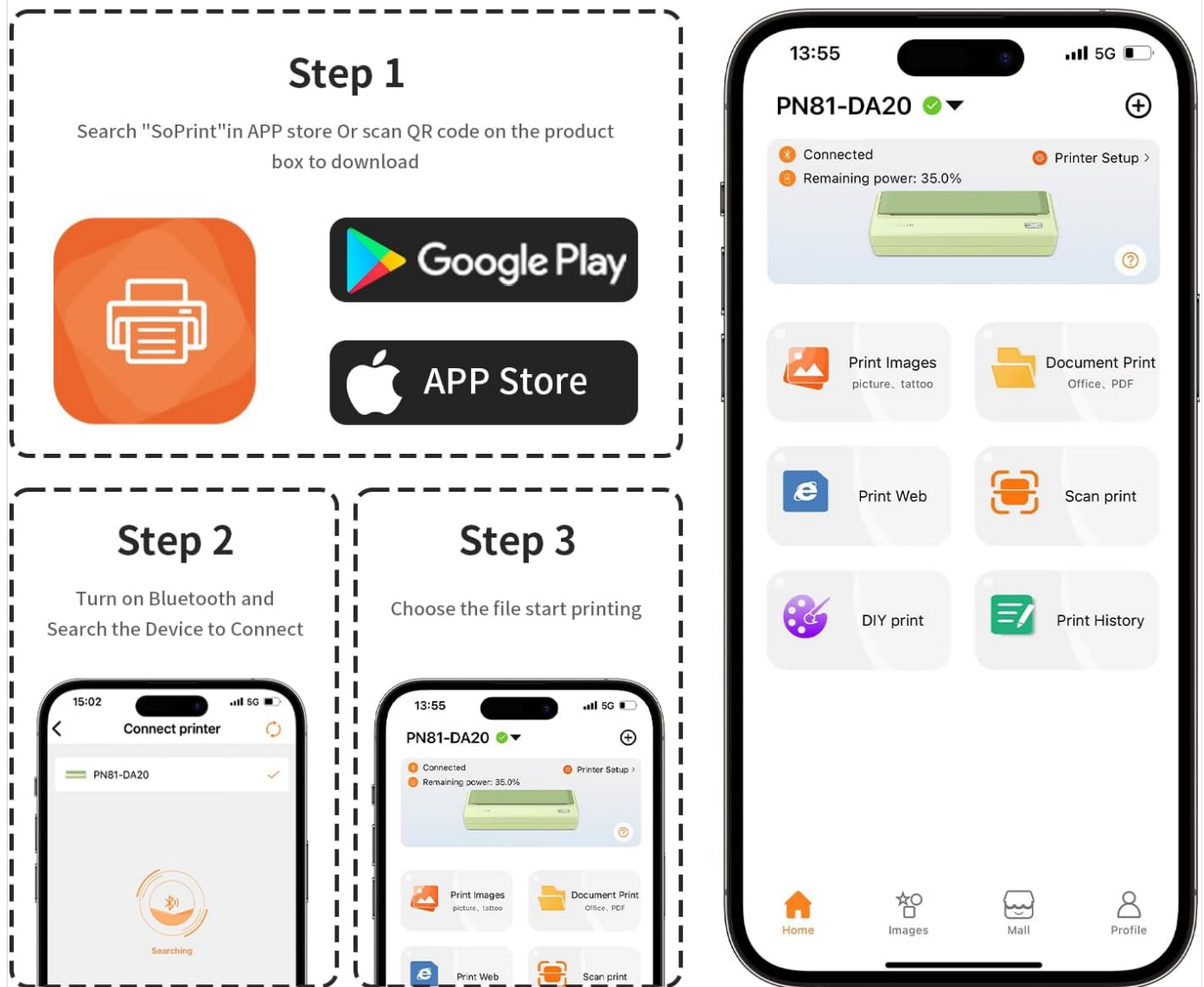


Image: Visual guide for connecting the printer to a phone or tablet via Bluetooth using the SoPrint application.

Your browser does not support the video tag.

Video: Demonstration of how to install the SoPrint APP and connect the printer.

Your browser does not support the video tag.

Video: Guide on how to download the SoPrint APP and initiate printing.

3.2. Laptop/PC Setup (USB)

1. **Connect via USB:** Use the provided USB-C cable to connect the printer to your Windows (7-11) or macOS laptop/PC.
2. **Install Driver:** Install the printer driver from the USB disk included in the package. If a USB disk is not available, download the corresponding driver from the [Rongta Official Website](#).
3. **Start Printing:** Follow the on-screen installation guide. Once the driver is installed, you can begin printing documents from your computer.

Bluetooth Connect for Phone and Tablet

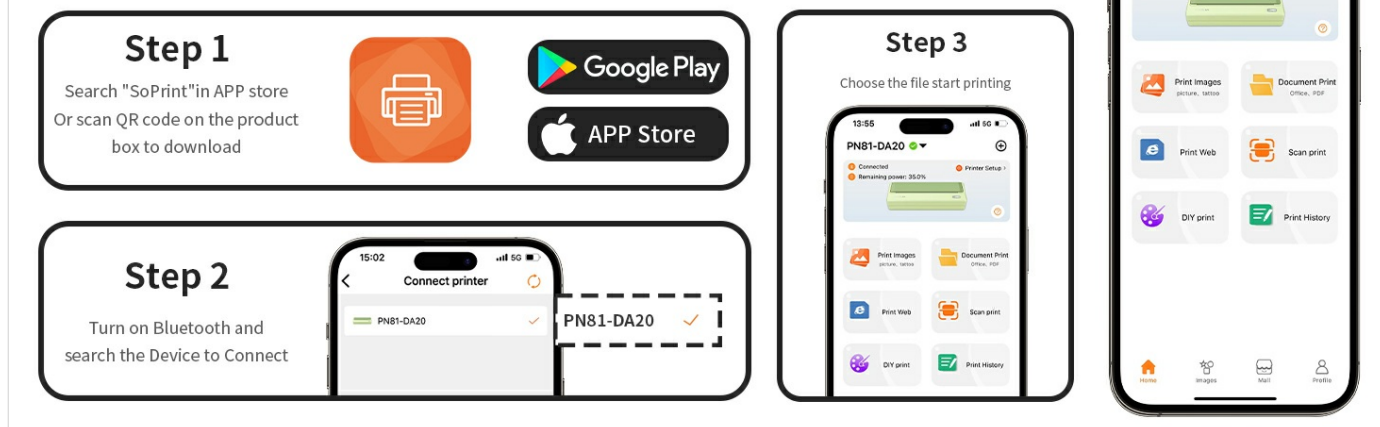


Image: Instructions for connecting the printer to a laptop or PC using a Type-C USB cable and installing the necessary drivers.

Your browser does not support the video tag.

Video: Tutorial on how to install the driver from the USB disk and print for Mac OS.

4. OPERATION

4.1. Loading Paper

The Rongta Portable Printer supports various thermal paper sizes, including 8.5" x 11" US Letter and A4. Ensure the thermal paper is inserted correctly with the printable side facing the print head. The printer is designed for easy paper loading with its large paper warehouse.

Ideal for Mobile Office



2600mAh



Long Capacity Battery



USB-C



Bluetooth Connection



Image: The printer demonstrating support for 8.5" x 11" US Letter paper.

4.2. Printing Documents

Once connected via Bluetooth (through the SoPrint app) or USB, select the document or image you wish to print from your device. Adjust print settings such as density or margins within the app or printer driver if available. Confirm the print command to begin printing.

Your browser does not support the video tag.

Video: Overview of the RONGTA A4 Portable Printer, demonstrating its support for 8.5" x 11" US Letter paper.

Your browser does not support the video tag.

Video: A short demonstration highlighting the portable nature and printing speed of the device.

5. MAINTENANCE

Regular maintenance ensures optimal performance and extends the life of your printer.

- **Cleaning the Print Head:** Periodically clean the thermal print head with a soft, lint-free cloth lightly dampened with isopropyl alcohol. Ensure the printer is off and cool before cleaning.
- **Exterior Cleaning:** Wipe the exterior of the printer with a soft, dry cloth. Avoid using abrasive cleaners or solvents.
- **Paper Storage:** Store thermal paper in a cool, dry place away from direct sunlight and heat to prevent degradation.

6. TROUBLESHOOTING

6.1. Common Issues and Solutions

Problem	Possible Cause	Solution
Printer not connecting via Bluetooth	Not connecting through "SoPrint" app; Bluetooth off; printer out of range.	Ensure Bluetooth is on. Connect exclusively through the "SoPrint" app. Move printer closer to device.
No print output or blank pages	Paper loaded incorrectly; out of paper; low battery; print head issue.	Check paper orientation. Reload paper. Charge printer. Clean print head.
Poor print quality (faint, streaky)	Print head dirty; low battery; poor quality thermal paper.	Clean print head. Charge printer. Use recommended thermal paper. Adjust print density in app/driver.
Printer not recognized by PC	Driver not installed; faulty USB cable; incorrect USB port.	Install/reinstall printer driver. Try a different USB cable or port.

7. SPECIFICATIONS

Feature	Detail
Model Name	RONGTA A4 Portable Printer
Model Number	PN81-Dark Grey
Printing Technology	Thermal
Print Resolution	300 x 300 dpi
Connectivity	Bluetooth, USB-C
Compatible Devices	Smartphones (Android, iOS), PC, Tablets, Laptops
Max Print Speed (Monochrome)	20 ppm
Printer Media Size Maximum	8.5 x 11 inch (US Letter, A4)
Battery	1 Lithium Ion battery (2600mAh)
Product Dimensions	10.9"D x 3.8"W x 2.1"H
Item Weight	2 pounds (approx. 946g)
Included Components	Printer, Paper, USB Cable

8. WARRANTY AND SUPPORT

The Rongta Portable Printer comes with a limited warranty. For specific warranty terms and conditions, please refer to the documentation included with your product or contact Rongta customer support.

For technical support, troubleshooting assistance, or inquiries about your product, please visit the official Rongta website or contact their customer service department. Contact information can typically be found on the product packaging or the manufacturer's website.

You can also refer to the official user manual PDF for more detailed information[Download User Manual \(PDF\)](#)