

## SISESOL 5fb5883b-97c5-4e18-9aaf-56989df47190

# SISESOL 4-Drawer Vertical File Cabinet Instruction Manual

Model: 5fb5883b-97c5-4e18-9aaf-56989df47190

## 1. INTRODUCTION

The SISESOL 4-Drawer Vertical File Cabinet is designed for efficient organization in home or office environments. Constructed from durable steel with an electrostatic phosphorus-free epoxy spray coating, it offers resistance to corrosion and rust. This cabinet features deep, spacious drawers with full extension and smooth silent rails, accommodating Letter, Legal, and A4-sized documents. An anti-tilt mechanism ensures safety by allowing only one drawer to open at a time, and a built-in lock with two foldable keys provides security for your important documents.



Image: SISESQL 4-Drawer Vertical File Cabinet in an office setting, showcasing its sleek design and integration into a workspace.

## 2. WHAT'S IN THE BOX

---

- File Cabinet Components (disassembled)
- Assembly Instructions
- Hardware Pack (screws, etc.)
- 2 Foldable Keys
- Removable and Adjustable Hanging Rods

## 3. SAFETY INFORMATION

---

Always ensure the cabinet is properly assembled and stable before use. Do not exceed the maximum weight capacity of 120 pounds (54.4 kg) on the top surface to prevent tipping or damage. Each drawer has a weight capacity of 150 pounds. The anti-tilt mechanism is designed to prevent the cabinet from tipping by allowing only one drawer to be opened at a time. Always close one drawer completely before opening another.

## For Safety And To Prevent Tipping Only open one drawer at a time

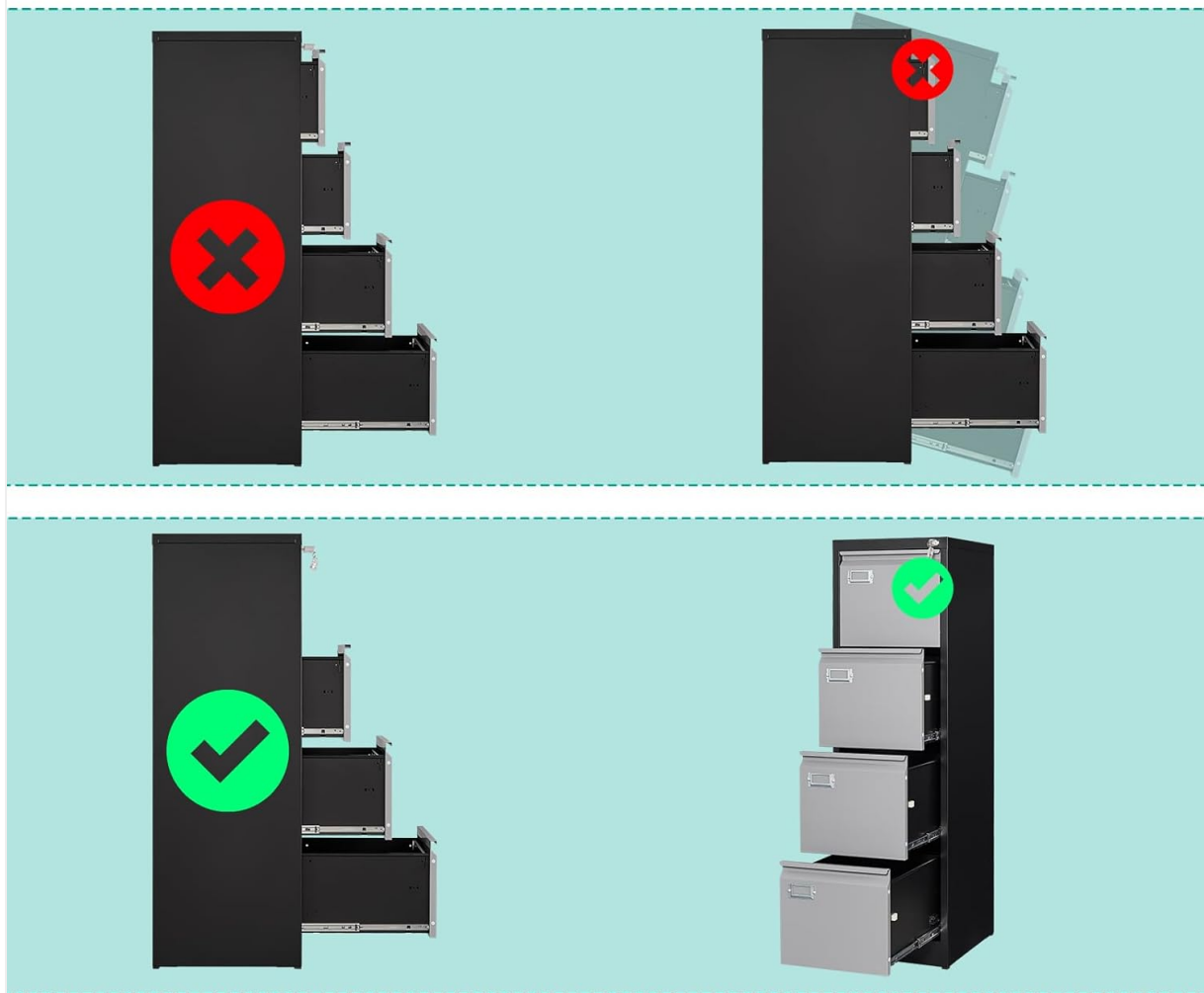


Image: Diagram showing the anti-tilt mechanism, emphasizing that only one drawer should be open at a time to maintain stability.

## 4. SETUP AND ASSEMBLY

Assembly of the SISESOL 4-Drawer Vertical File Cabinet is required. Please follow the included assembly instructions carefully. An installation video is available on the product details page for visual guidance. Ensure all parts are accounted for before beginning assembly. Use the provided hardware and tools as specified in the manual.

### Assembly Overview Video

Your browser does not support the video tag.

Video: An official SISESOL video demonstrating the assembly process of a 4-drawer file cabinet. This video provides a visual guide to help users correctly and efficiently assemble the product.

## 5. OPERATING INSTRUCTIONS

### 5.1. Drawer Operation

The drawers feature ball-bearing full-extension slides for smooth and silent operation. To open a drawer, gently

pull the handle. To close, push the drawer firmly until it is fully recessed. The anti-tilt mechanism ensures that only one drawer can be opened at a time. Do not force multiple drawers open simultaneously.



Image: File cabinet drawers open, illustrating the ample storage space and how different document sizes (Letter, A4, Legal) and file boxes can be organized.

## 5.2. Locking Mechanism

The file cabinet is equipped with a single lock that secures all four drawers simultaneously. Insert one of the two provided foldable keys into the lock cylinder located on the top drawer. Turn the key to lock or unlock the drawers. Ensure all drawers are fully closed before attempting to lock the cabinet.



Image: Close-up view of the file cabinet's details, highlighting the lock mechanism, marker clip for labeling, and the full extension drawer slide for easy access.

### 5.3. Hanging Rods

The filing cabinet includes removable and adjustable hanging rods to accommodate various file types. These rods can be positioned to support Letter, Legal, or A4-sized hanging files. Adjust the rods by lifting and repositioning them into the desired slots within the drawer.

## 6. MAINTENANCE

To maintain the appearance and functionality of your SISESOL file cabinet, regularly wipe surfaces with a soft, damp cloth. Avoid using abrasive cleaners or harsh chemicals, as these may damage the finish. Periodically check all screws and connections to ensure they remain tight. Lubricate drawer slides if they become stiff, using a silicone-based lubricant.

## 7. TROUBLESHOOTING

### 7.1. Drawers Not Opening/Closing Smoothly

- Check for obstructions within the drawer or along the slides.
- Ensure the cabinet is on a level surface. Uneven surfaces can affect drawer alignment.



- Verify that the drawer slides are properly installed and secured.
- Apply a silicone-based lubricant to the drawer slides if necessary.

7.2. Cabinet Tipping Hazard

- Ensure only one drawer is open at a time. The anti-tilt mechanism is designed to prevent tipping.
- Do not overload drawers, especially upper ones. Distribute weight evenly.
- If the cabinet is frequently moved or on an unstable surface, consider anchoring it to a wall (hardware not included for wall mounting).

7.3. Lock Not Functioning

- Ensure all drawers are fully closed before attempting to lock.
- Check if the key is fully inserted and turned correctly.
- Avoid forcing the key or lock mechanism.

8. SPECIFICATIONS

Brand	SISESOL
Model Number	5fb5883b-97c5-4e18-9aaf-56989df47190
Color	Black Grey
Material	Metal (Stainless Steel frame/top/back)
Product Dimensions (D x W x H)	17.72" x 15" x 50.12"
Item Weight	62 Pounds
Weight Limit (Top)	120 Pounds
Weight Limit (Each Drawer)	150 Pounds
Number of Drawers	4
Special Feature	Lockable, Anti-tilt Mechanism
Assembly Required	Yes

# PRODUCT DIMENSION



Overall Weight Capacity:

**62.4Lbs**

Each Drawer Weight Capacity:

**150Lbs**

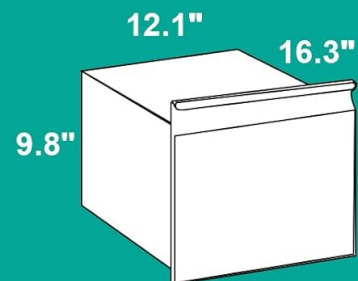


Image: Detailed product dimensions and weight capacities, including overall weight capacity and individual drawer capacity.

## 9. WARRANTY AND SUPPORT

For any issues encountered during installation or use, please refer to the installation video on the product details page or contact SISESOL customer support. Information regarding specific warranty terms can be found on the product packaging or by contacting the manufacturer directly. SISESOL is committed to providing quality products and customer satisfaction.