

## Manuals+

[Q & A](#) | [Deep Search](#) | [Upload](#)

manuals.plus /

- › [ARPHA](#) /
- › [ARPHA A12 WiFi 2K Dash Cam Front, 2160x1440P QHD Dash Cam with APP Voice Control, 150° Wide Angle Dash Camera for Cars, GPS, WDR Night Vision, 24H Parking Mode, Easy to Install ARPHA A12 2.5K Dash Cam](#)

## ARPHA A12

# ARPHA A12 WiFi 2K Dash Cam User Manual

Model: A12 | Brand: ARPHA

### INTRODUCTION

This user manual provides comprehensive instructions for the ARPHA A12 WiFi 2K Dash Cam. It covers setup, operation, maintenance, and troubleshooting to ensure optimal performance and longevity of your device. The ARPHA A12 records videos in 2560x1440P QHD resolution with a 150° wide-angle lens, offering clear and detailed footage. Key features include built-in WiFi for real-time viewing and sharing, smart voice control, integrated GPS for tracking speed and location, and Super Night Vision with WDR technology for enhanced low-light recording. It also supports 24-hour parking mode with collision detection and time-lapse options.

### WHAT'S IN THE BOX

Verify that all items listed below are included in your package:

- Camera Body
- Cable Clip
- Crowbar
- Car Charger
- Spare 3M Adhesive
- Electrostatic Films
- User Manual

Image: All components included in the ARPHA A12 Dash Cam package.

### SETUP

#### Installation

The ARPHA A12 Dash Cam is designed for easy installation on your vehicle's windshield. Use the provided 3M adhesive and electrostatic films to securely mount the camera. The long power cable and included cable clips, along with the crowbar tool, assist in neatly routing the cable along the vehicle's trim, ensuring a clean and unobstructed view.

Image: Recommended installation path for the dash cam power cable.

## Memory Card Tips

A memory card is not included with the dash cam. The ARPHA A12 supports 64GB to 256GB Class 10 and U3 speed micro SD cards. It is crucial to format the SD card to FAT32 in Windows or MS-DOS (FAT) in Mac OS before its first use to ensure proper functionality and recording.

Image: Instructions for inserting and formatting the memory card.

## Connecting to the ARPHA App (Built-in WiFi)

The dash cam features built-in WiFi for seamless connectivity with the ARPHA app on your smartphone. This allows for real-time video viewing, playback, downloading, and sharing of recorded footage.

1. Download the ARPHA app from your device's app store (available on App Store and Google Play).
2. Connect your smartphone to the dash cam's WiFi network. Ensure cellular data is turned off during this process to prevent interference.
3. Once connected, you can easily access and manage the dash cam's features through the app.

## Excellent Night Vision



Image: Step-by-step guide for connecting the dash cam to the ARPHA app.

## OPERATING INSTRUCTIONS

### Smart Voice Control

The ARPHA A12 features intelligent voice control, allowing you to operate the dash cam hands-free for safer driving. Simply use one of the 8 available voice commands to perform actions such as taking pictures, locking videos, or controlling recording.

## WDR Tech

With WDR (Wide Dynamic Range) technology, a balance between brightness and darkness is achieved, notably improving image quality.



Image: Illustration of smart voice control features in action.

## Built-in GPS

With built-in GPS, the ARPHA A12 records essential information such as time, speed, latitude, and longitude. This data can be reviewed through the ARPHA app or the dedicated ARPHA GPS Player software, providing crucial evidence in case of incidents.



Image: Visual representation of GPS data recording and playback.

## Super Night Vision with WDR Technology

The A12 dash camera is equipped with Wide Dynamic Range (WDR) technology and a 6-layer glass lens. WDR technology optimizes image quality by balancing brightness and darkness, ensuring clear capture of road details even in challenging lighting conditions like glare or dim light.



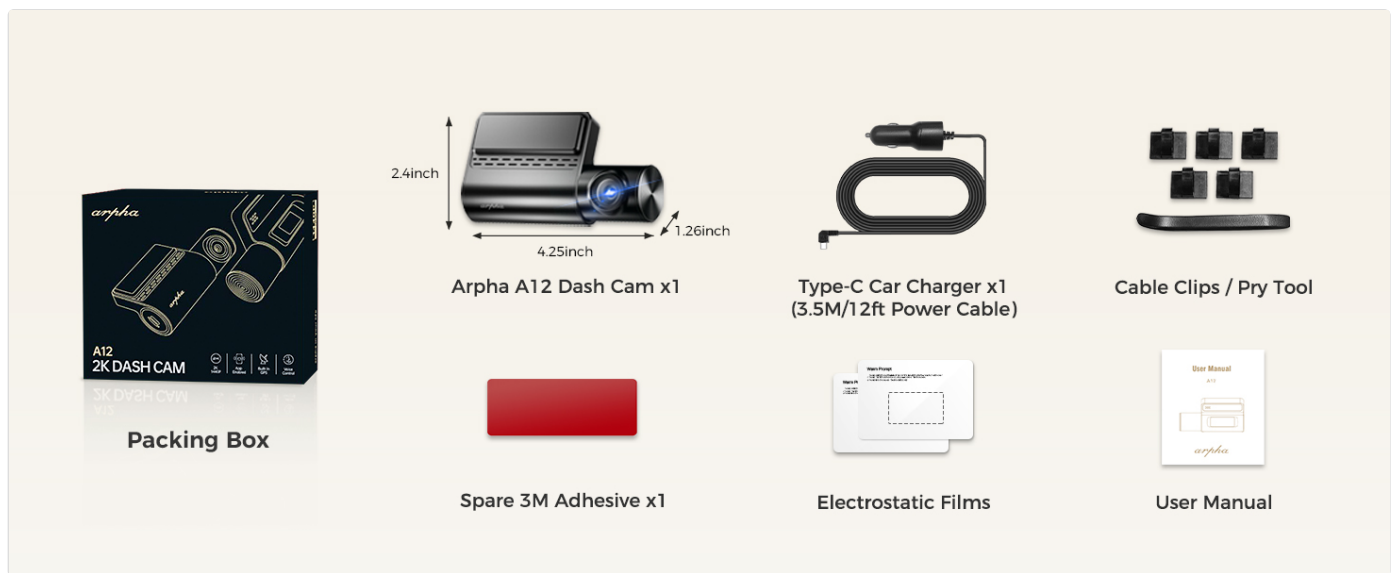


Image: Demonstration of WDR technology for improved night vision.

## Emergency Lock Video (G-Sensor)

In the event of a collision, the built-in G-sensor automatically detects the impact and locks the current 1-minute video segment. This ensures that crucial evidence is preserved and not overwritten by loop recording.



Image: Visual explanation of the G-sensor triggered emergency video lock.

## 24-Hour Parking Mode

The ARPHA A12 offers two 24-hour parking modes to monitor your vehicle while parked:

- **Collision Detection Parking Mode:** The G-sensor detects impacts and automatically records and locks video footage.
- **Time-Lapse Parking Mode:** The front dash camera continuously records at a low frame rate for 24 hours, compressing long periods into short, viewable videos.

*Note: 24-hour parking mode requires a 3-lead Hardwire Kit with an output current of 1A. Search ASIN: B0BM9JL327 for compatible kits.*

## Easy to Install

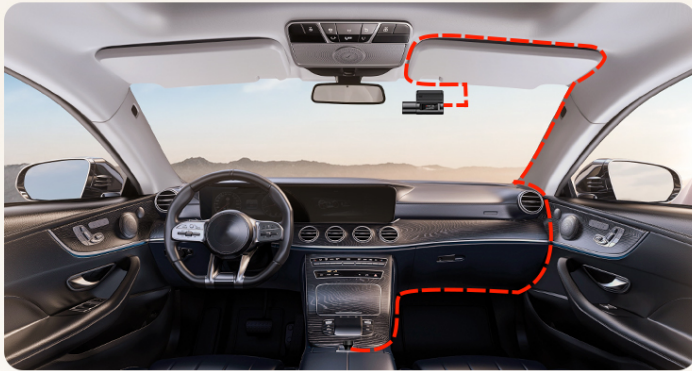


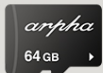
Image: Overview of the two 24-hour parking modes.

## Loop Recording

The dash cam records in continuous loops of 1, 3, or 5 minutes (default). When the SD card becomes full, the dash cam automatically overwrites the oldest unlocked footage to ensure continuous recording. Locked clips (from emergency events) are protected from being overwritten.

## Memory Card Tips

NOTE: Memory card does not included in the package.



Alpha A12 2k dash cam supports 64GB to 256GB Class 10 and U3 speed micro SD card. Please format SD card as FAT32 in Windows or MS-DOS (FAT) in Mac OS at first time using.

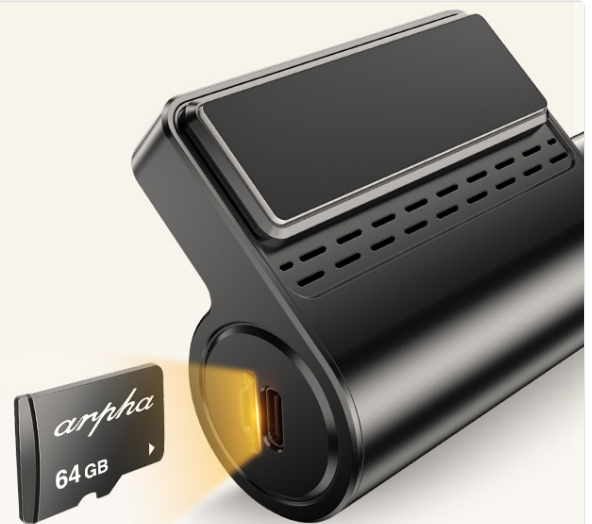


Image: Explanation of the loop recording function.

## Fatigue Driving Alert

For enhanced safety, the dash cam can provide timely reminders every 2 hours to help prevent fatigue driving. This feature encourages drivers to take breaks on long journeys.



Image: Visual cue for the fatigue driving alert feature.

## MAINTENANCE

Regular maintenance ensures the optimal performance and longevity of your ARPHA A12 Dash Cam.

- **SD Card Management:** Periodically back up important footage from your SD card. Format the SD card regularly (e.g., once a month) to maintain its performance and prevent data corruption.
- **Lens Cleaning:** Gently clean the camera lens with a soft, lint-free cloth to ensure clear video recording. Avoid abrasive materials that could scratch the lens.

- **Firmware Updates:** Check the ARPHA app or official website for any available firmware updates. Keeping your dash cam's firmware up-to-date can improve performance and add new features.

## TROUBLESHOOTING

---

If you encounter issues with your ARPHA A12 Dash Cam, please refer to the following common solutions:

- **Camera Not Powering On:** Ensure the car charger is properly connected to both the dash cam and the vehicle's power outlet. Check the vehicle's fuse for the power outlet.
- **Recording Issues:** Verify that a compatible SD card is inserted and properly formatted. If the card is full, ensure loop recording is enabled or manually format the card after backing up data.
- **WiFi Connection Problems:** Make sure the dash cam's WiFi is enabled. Try restarting both the dash cam and your smartphone. Ensure cellular data is temporarily disabled on your phone when connecting to the dash cam's WiFi.
- **Poor Video Quality:** Clean the camera lens. Ensure the protective film has been removed from the lens. Check the video resolution settings in the ARPHA app.
- **GPS Not Working:** Ensure the GPS function is enabled in the app settings. The dash cam needs a clear view of the sky to acquire a GPS signal.

For further assistance, please contact ARPHA customer support.

## SPECIFICATIONS

---

Feature	Detail
Product Dimensions	4.51 x 2.36 x 4.72 inches
Item Weight	11.3 ounces
Model Number	A12
Connectivity Technology	USB, Built-In WiFi
Video Capture Resolution	2160p (2560x1440P QHD)
Wide Angle	150°
Special Features	Built-in WiFi, Smart Voice Control, Built-in GPS, WDR Night Vision, 24H Parking Mode (Collision Detection & Time-Lapse), Loop Recording, Fatigue Driving Alert
Included Components	Camera Body, Cable Clip, Crowbar, Car Charger
Mounting Type	Windshield Mount
Color	Black

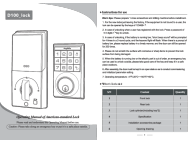
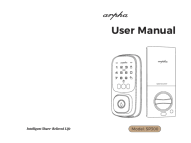
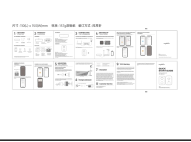



## WARRANTY AND SUPPORT

---

ARPHA A12 dashcam provides a **12-month warranty** and **24/7 technical support**. Should you encounter any problems or require assistance with after-sales service, please do not hesitate to email us. The ARPHA R&D team is committed to providing a response within 24 working hours.



Related Documents - A12

	<p><a href="#">Arpha D100 Smart Lock: Operating Manual and Installation Guide</a></p> <p>Comprehensive operating manual and installation guide for the Arpha D100 smart door lock, covering features, specifications, setup, and usage.</p>
	<p><a href="#">Arpha SP300 Smart Lock User Manual</a></p> <p>Comprehensive user manual for the Arpha SP300 Smart Lock, covering installation, programming, features, and app connection. Learn how to set up and use your Arpha smart lock.</p>
	<p><a href="#">Arpha Home Security Camera System Quick Start Guide</a></p> <p>A concise guide to setting up your Arpha wireless outdoor security camera system, covering HomeBase and arphaCam installation, connection, charging, and troubleshooting.</p>
	<p><a href="#">Arpha Smart Lock ST380 User Manual</a></p> <p>Comprehensive user manual for the Arpha Smart Lock Model ST380, covering hardware introduction, installation, programming, operation, and troubleshooting.</p>
	<p><a href="#">Arpha D100 Keyless Entry Door Lock Programming Guide</a></p> <p>A programming guide for the Arpha D100 Keyless Entry Door Lock, detailing operation processes such as restoring factory settings and adding new codes.</p>
	<p><a href="#">Arpha D280 Smart Lock: Operating Manual and Installation Guide</a></p> <p>Comprehensive operating manual and installation guide for the Arpha D280 American-standard smart lock, covering setup, features, app integration, and troubleshooting.</p>