

JADENS A4black

JADENS Bluetooth Thermal Printer User Manual

Model: A4black

1. INTRODUCTION

The JADENS Bluetooth Thermal Printer is a portable, inkless printing solution designed for convenience and efficiency. This device supports 8.5" x 11" US Letter size thermal paper and offers versatile connectivity options, including Bluetooth for iOS and Android devices, and USB for laptops. This manual provides essential information for setting up, operating, maintaining, and troubleshooting your printer to ensure optimal performance.



Image: The JADENS Bluetooth Thermal Printer in black, shown with a smartphone connected via Bluetooth, illustrating its portable nature and ease of use for printing documents.

2. WHAT'S IN THE BOX

Please verify that all items are present in the package:

- Portable Printer x 1
- User Manual x 1
- Power Adapter x 1
- US Letter Thermal Paper Roll x 1
- Type-C USB Cable x 1

3. SETUP GUIDE

3.1. Initial Setup and Charging

Before first use, ensure the printer is fully charged using the provided power adapter and Type-C USB cable. The printer features 2 built-in 2600mAh batteries, offering extended use.

3.2. Loading Thermal Paper

This printer exclusively uses thermal paper. Open the paper compartment, insert the thermal paper roll or fan-fold paper, ensuring the printable side faces the print head. Close the compartment securely.

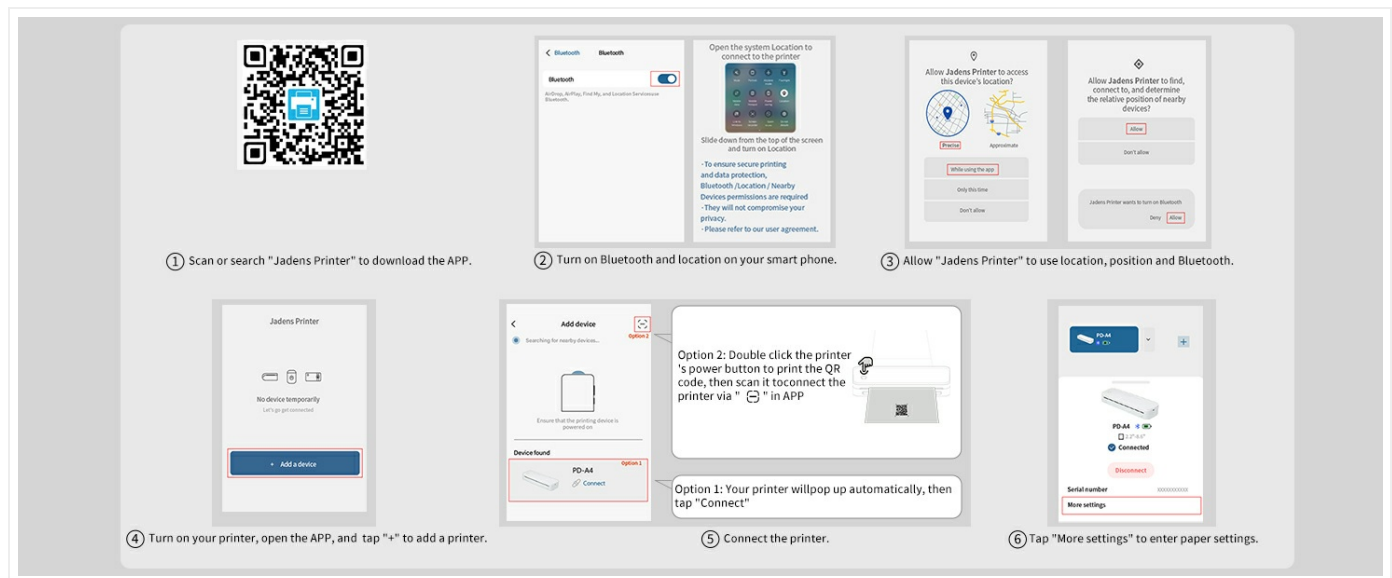


Image: Illustration of the JADENS portable printer demonstrating the two methods for loading thermal paper: using the built-in paper bin for rolls or fan-fold paper.

3.3. Connecting to Devices

The printer offers both Bluetooth and USB connectivity.

3.3.1. Bluetooth Connection (for iOS & Android)

1. **Download the App:** Scan the QR code below or search for "Jadens Printer" in your device's app store (App Store for iOS, Google Play for Android).
2. **Enable Bluetooth & Location:** On your smartphone, turn on Bluetooth and location services.
3. **Grant Permissions:** Allow the "Jadens Printer" app to access location, position, and Bluetooth for device discovery.
4. **Turn on Printer:** Power on your JADENS printer.
5. **Connect via App:** Open the "Jadens Printer" app, tap "+" to add a printer. Your printer should appear; tap "Connect". Alternatively, double-click the printer's power button to print a QR code, then scan it within the app.
6. **Paper Settings:** After connecting, tap "More settings" to configure paper type and size.

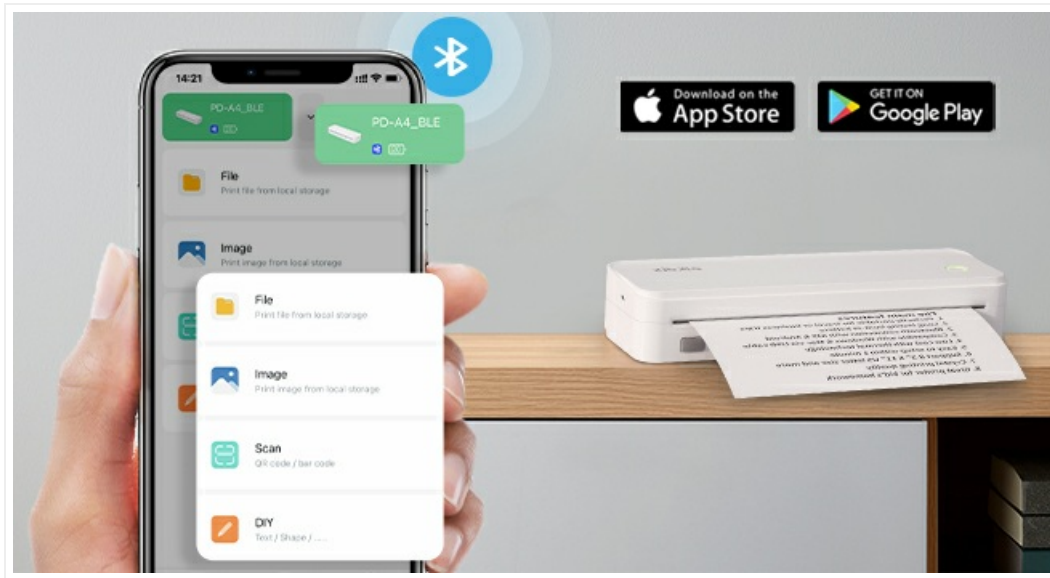


Image: A step-by-step visual guide demonstrating how to connect the JADENS printer to a smartphone using the dedicated mobile application, including scanning a QR code for app download and Bluetooth pairing instructions. The QR code links to https://u.shengcai.net/bnl7/H666G_ayKEG.

Bluetooth Pairing via App



ios



android



Image: The JADENS printer illustrating its Bluetooth pairing capability with both iOS and Android smartphones through a dedicated application.

3.3.2. USB Cable Connection (for Windows & Mac)

For laptop and computer printing, install the appropriate driver first. Connect the printer to your computer using the provided Type-C USB cable.

USB Cabel Connection



Image: A user operating the JADENS portable printer, which is connected to a laptop via a USB cable, demonstrating its compatibility with desktop and laptop computers.

4. OPERATING INSTRUCTIONS

4.1. Printing Documents

Once connected, you can print various documents such as recipes, forms, letters, assignments, study materials, and travel documents. Ensure your document is formatted for the thermal paper size (up to 8.5" x 11").

- **From Mobile App:** Select the document or image within the "Jadens Printer" app and initiate the print command.
- **From Computer:** Use your computer's standard print function, selecting the JADENS printer from the available options.

All-Purpose Printing: Anytime, Anywhere



Image: A visual representation of the JADENS printer's versatility, showing its application in various settings such as business, travel, and educational environments.

4.2. Key Features

- **Ink-Free Thermal Technology:** The printer uses advanced thermal technology, eliminating the need for ink, toner, or ribbons. This provides a cost-effective and mess-free printing experience.
- **High Definition Printing:** Enjoy crisp and clear monochrome prints with a resolution of 203 dpi.
- **Portability:** Its compact and lightweight design makes it ideal for travel and on-the-go printing.
- **Long Battery Life:** Equipped with two 2600mAh batteries, the printer can continuously print up to 360 sheets or operate for 3 hours on a single charge, with a standby time of up to 90 days.
- **Adjustable Paper Sizes:** Supports documents ranging from 2 to 8.5 inches in width.
- **Secure Local Storage:** The printer allows direct printing from your device without transferring files to the cloud, ensuring data privacy.

High Definition Printing with Thermal Technology

Per sheet cost
≈ \$0.07

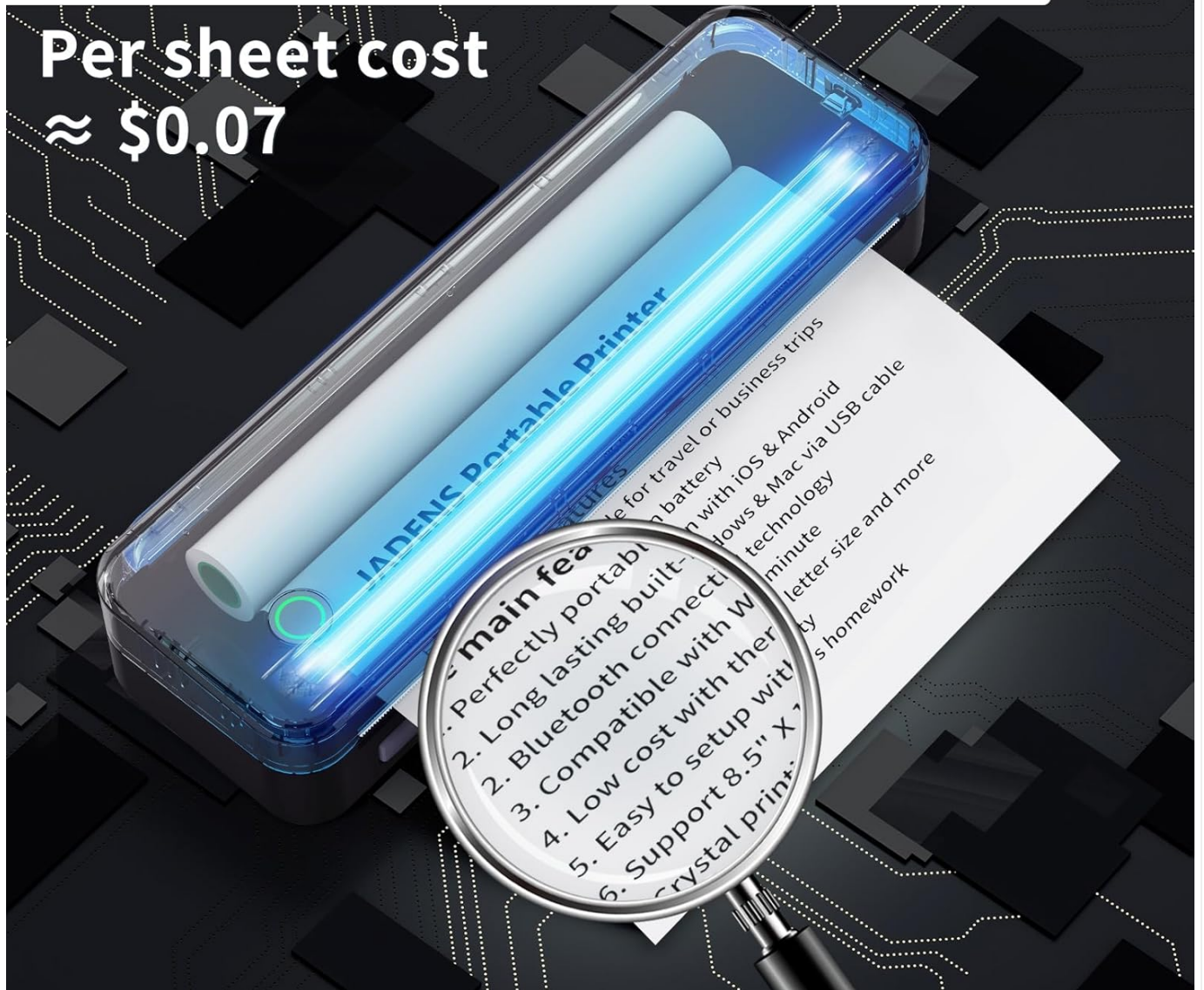


Image: A magnified view highlighting the high-definition output of the JADENS thermal printer, emphasizing its inkless technology and the low cost per sheet.

Secure Local Storage

No need to worry about data leakage

JADENS®



No need for network.
Print multiple documents directly.

Others



Transferring files to the cloud first
and then printing them on a printer
may result in data leakage.

Image: A comparison graphic illustrating the JADENS printer's secure local storage printing method against other printers that may require cloud transfer, emphasizing data privacy.

Slim design, Big power



Image: A person demonstrating the compact size of the JADENS printer by easily placing it into a backpack, highlighting its portability for travel.



Image: The JADENS printer displaying its 2600mAh battery capacity and indicating its readiness to print, emphasizing its long-lasting power.

5. MAINTENANCE

5.1. Cleaning the Print Head

To maintain print quality, periodically clean the thermal print head. Turn off the printer and allow it to cool. Gently wipe the print head with a lint-free cloth lightly dampened with isopropyl alcohol. Allow it to dry completely before use.

5.2. Thermal Paper Care

Thermal paper is sensitive to heat, light, and certain chemicals. Store thermal paper in a cool, dark, and dry place. Avoid prolonged exposure of printed documents to direct sunlight, high temperatures, or contact with plastics containing plasticizers, as this can cause the print to fade over time.

6. TROUBLESHOOTING

- **Printer Not Connecting via Bluetooth:**

Ensure Bluetooth is enabled on your mobile device and the printer. Verify that the "Jadens Printer" app has necessary location and Bluetooth permissions. Try restarting both the printer and your mobile device. If issues persist, refer to the app's connection guide or the printer's indicator lights for status.

- **Printer Not Connecting via USB:**

Confirm that the correct driver for your operating system (Windows/Mac) is installed. Try a different USB port or cable. Ensure the printer is powered on.

- **Poor Print Quality or Fading:**

Check if you are using thermal paper. Regular paper will not work. Ensure the thermal paper is loaded correctly with the printable side facing the print head. Clean the print head as described in the Maintenance section. If prints are fading quickly after printing, ensure the thermal paper is not old or improperly stored.

- **Printer Not Printing:**

Check if the printer is powered on and has sufficient battery charge. Ensure there is thermal paper loaded correctly. Verify the printer is properly connected to your device (Bluetooth or USB) and selected as the active printer in your application.

- **Understanding Indicator Lights:**

The printer features indicator lights that convey its status (e.g., power, battery, error). Refer to the quick start guide included with your printer for a detailed explanation of specific light patterns and their meanings.

7. SPECIFICATIONS

Brand	JADENS
Model Name	A4black
Printing Technology	Thermal
Printer Output	Monochrome
Maximum Black and White Print Resolution	203 dpi
Max Print Speed Monochrome	20 ppm (pages per minute)
Connectivity Technology	Bluetooth, USB (Type-C)
Compatible Devices	Smartphones (iOS, Android), Laptops (Windows, Mac)
Maximum Media Size	8.5 x 11 inch (US Letter)
Sheet Size Support	8.5×11, 8.2×11.6 inches
Max Input Sheet Capacity	50 sheets
Batteries	2 Lithium Ion batteries (included)
Product Dimensions	10 x 1.8 x 3.1 inches (25.4 x 4.57 x 7.87 cm)
Item Weight	2.29 pounds (1.04 kg)
Memory Storage Capacity	64 MB

8. WARRANTY AND SUPPORT

8.1. Limited Warranty





The JADENS Bluetooth Thermal Printer comes with a limited warranty. Please refer to the warranty card included in your package or contact customer support for detailed terms and conditions.

8.2. Customer Support

JADENS is committed to providing exceptional after-sale service. For technical assistance, inquiries, or support, please contact our dedicated team via phone or email. Contact information can be found on the JADENS official website or in the documentation provided with your product.



Related Documents

 <p>Thermal Label Printer JD-268BT</p> <p>User Manual</p>	<p>JADENS JD268BT Thermal Label Printer User Manual and Setup Guide</p> <p>Comprehensive guide for setting up and using the JADENS JD268BT Bluetooth Thermal Label Printer, including installation for Windows and Mac, printer settings, and troubleshooting.</p>
<p>User Manual</p>  <p>JD-23 Mini Thermal Printer</p>	<p>JD-23 Mini Thermal Printer User Manual - Setup, Operation, and Troubleshooting</p> <p>Comprehensive user manual for the Jadens JD-23 Mini Thermal Printer. Covers setup, operation, troubleshooting, paper types, specifications, and warranty information.</p>
 <p>1. Bluetooth Setup</p>	<p>JADENS Shipping Printer: Bluetooth Setup and App Guide</p> <p>A comprehensive guide to setting up your JADENS shipping printer via Bluetooth and its smartphone app. Learn how to connect, print labels, and troubleshoot common issues for iOS and Android devices.</p>
<p>APP Printing Quick Start Guide</p> 	<p>Jadens PD-A4 APP Printing Quick Start Guide</p> <p>A comprehensive quick start guide for the Jadens PD-A4 portable printer, detailing how to download the app, connect via Bluetooth, configure settings, and print various document types.</p>