

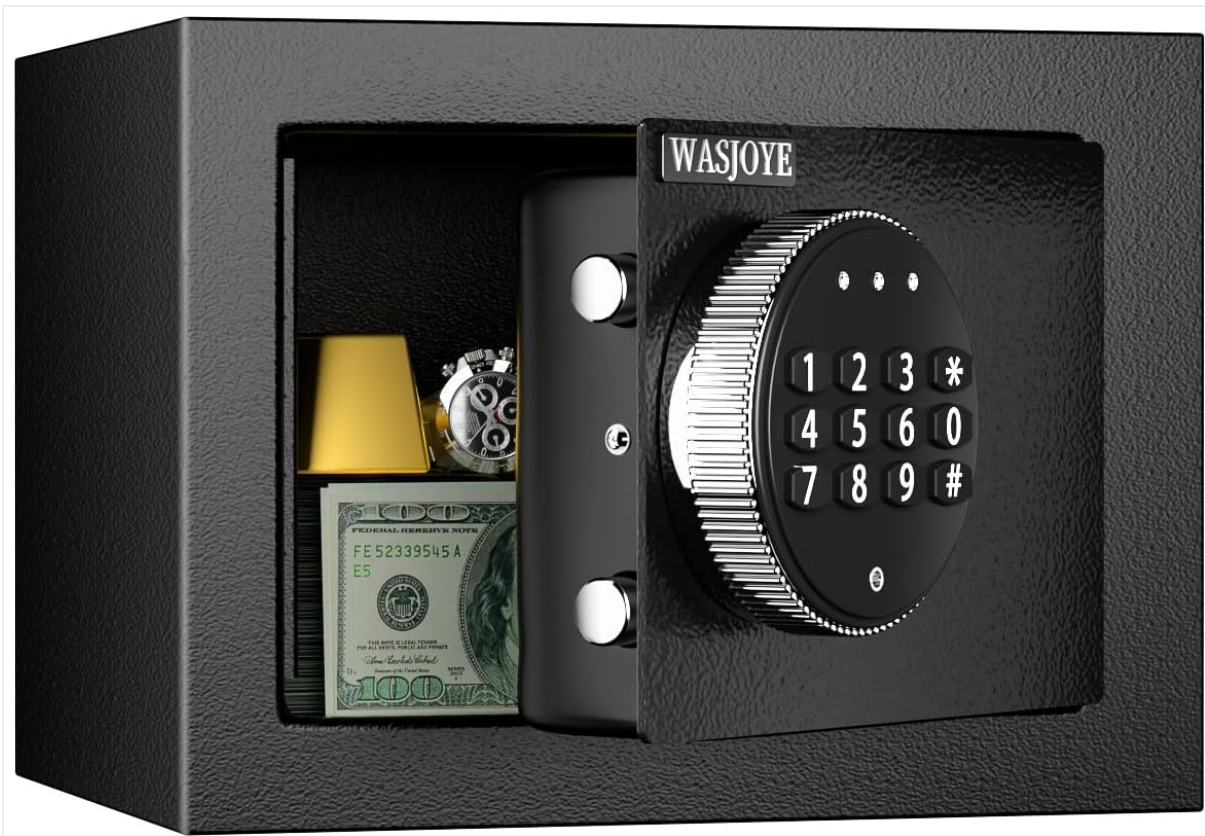
WASJOYE BXX

WASJOYE BXX 0.5 Cubic Feet Digital Keypad Safe Box Instruction Manual

1. INTRODUCTION

This manual provides comprehensive instructions for the setup, operation, and maintenance of your WASJOYE BXX 0.5 Cubic Feet Digital Keypad Safe Box. Please read this manual thoroughly before using the product to ensure proper functionality and security.

Product Overview



This image displays the WASJOYE BXX safe box in an open state, showcasing its interior capacity. Inside, various

valuables such as stacks of currency, gold bars, and a wristwatch are visible, demonstrating the safe's storage capabilities.

The WASJOYE BXX safe box is designed to secure valuables such as money, jewelry, important documents, and firearms. It features a robust all-steel construction, a digital keypad for programmable access, and an emergency key override system.

Included Components

- WASJOYE BXX Safe Box
- Emergency Power Box (1)
- Emergency Keys (2)
- Protective Mat (1)
- Mounting Screws (2)
- User Manual (1)

2. SAFETY INFORMATION

- **Do not store emergency keys inside the safe.** Keep them in a secure, separate location.
- Ensure the safe is installed on a stable surface or securely mounted to prevent tipping.
- Use only 4 AA alkaline batteries for the digital keypad. Do not mix old and new batteries or different battery types.
- Keep the safe away from excessive moisture or extreme temperatures.

3. SETUP

Unboxing and Initial Access

Upon receiving your WASJOYE safe box, it is essential to open it using the emergency key for the first time. The safe is shipped in a locked state without pre-installed batteries.

1. Locate the emergency keyhole, usually concealed behind the digital keypad or a small cover.
2. Insert one of the provided emergency keys into the keyhole.
3. Turn the key clockwise while simultaneously turning the knob on the digital keypad clockwise to open the safe door.
4. Keep the emergency keys in a safe place outside the safe.

Battery Installation

The digital keypad requires 4 AA alkaline batteries (not included) for operation. The battery compartment is located on the inside of the safe door.

1. Open the safe door using the emergency key.
2. Locate the battery compartment cover on the inside of the door.
3. Remove the cover and insert 4 AA alkaline batteries, ensuring correct polarity (+/-).
4. Replace the battery compartment cover.

Your browser does not support the video tag.

This video demonstrates the process of installing batteries and accessing the reset button for the WASJOYE safe box.

Mounting the Safe

The WASJOYE BXX safe box can be securely mounted to a wall, floor, shelf, or cabinet using the pre-drilled mounting holes and included expansion screws.

1. Choose a suitable location for mounting.
2. Mark the drilling points through the pre-drilled holes on the back or bottom of the safe.
3. Drill pilot holes at the marked locations.
4. Align the safe with the drilled holes and secure it using the provided expansion screws.



This image provides a visual representation of the WASJOYE BXX safe box, including its external dimensions (6.7 inches height, 6.7 inches depth, 9 inches width). Below the safe, the standard included components are displayed: the user manual, an emergency power box, mounting screws, and a set of keys.

4. OPERATING INSTRUCTIONS

Setting Your Passcode

You can program a personal passcode of 3 to 8 digits.

1. With the safe door open, locate the red reset button on the inside of the door (usually near the battery compartment).

2. Press the reset button. The indicator light on the keypad will flash.
3. Enter your desired 3 to 8 digit passcode on the keypad.
4. Press the '#' button to confirm. The indicator light will stop flashing, confirming the new passcode is set.
5. Test the new passcode with the door open before closing it.

Your browser does not support the video tag.

This video provides a visual overview of the WASJOYE Cabinet Safe Box, demonstrating its exterior, interior, and general functionality. It shows the safe being opened and closed, highlighting its design and capacity for storing various items.

Your browser does not support the video tag.

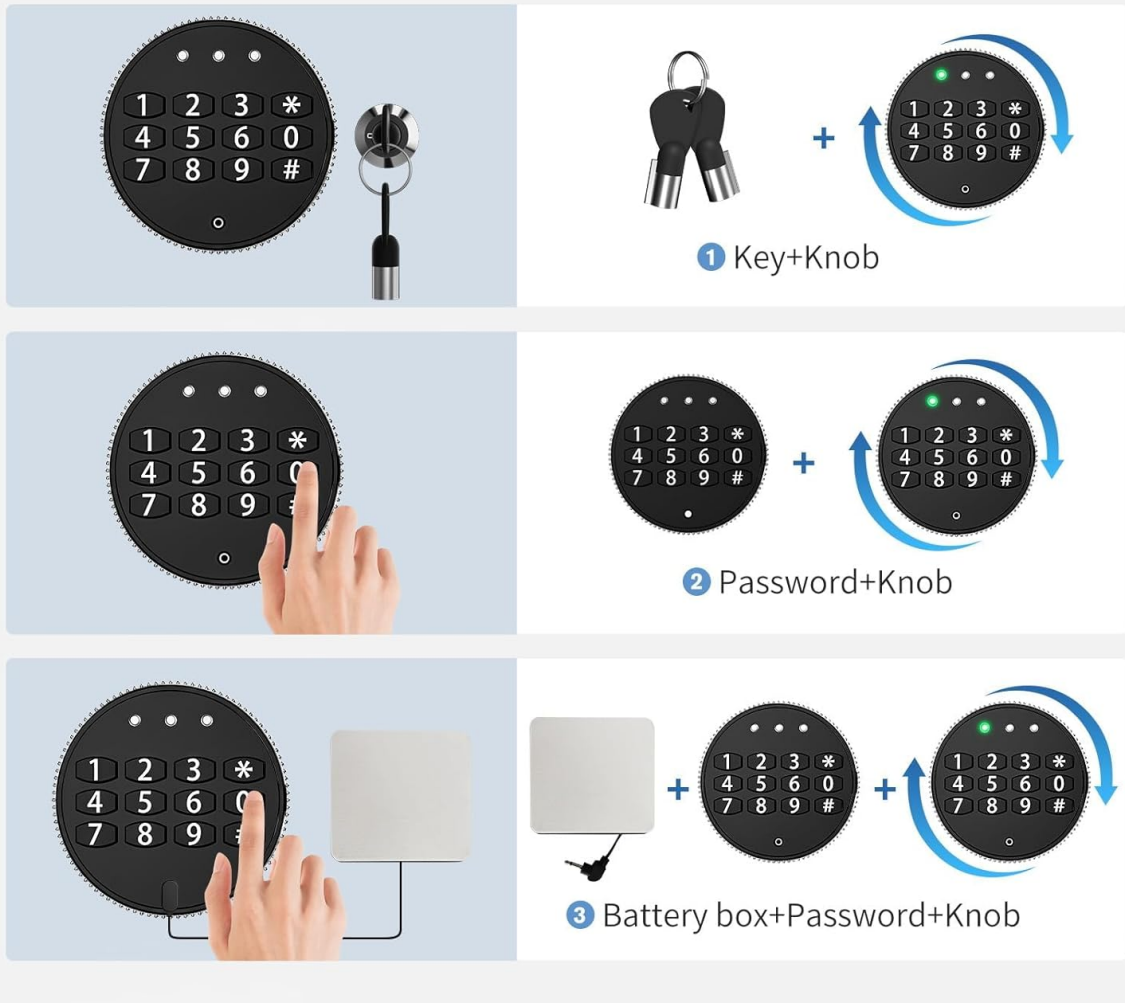
This video illustrates an alternative or detailed method for resetting the operation of the WASJOYE safe box. It guides users through the steps required to reset the safe's settings, including passcode changes, for optimal security management.

Opening the Safe

There are two primary methods to open your safe box:

- **Using the Digital Keypad:** Enter your programmed 3-8 digit passcode, then press '#'. The indicator light will turn green. Within 5 seconds, turn the knob clockwise to open the door.
- **Using the Emergency Key:** Insert the emergency key into the keyhole. Turn the key clockwise while simultaneously turning the knob clockwise to open the door.

3 UNLOCKING MODES



This diagram details the three methods for unlocking the WASJOYE safe box. Method 1 involves using both the physical key and turning the knob. Method 2 uses a digital password entered on the keypad, followed by turning the knob. Method 3 is for emergency situations, requiring the emergency battery box, a digital password, and turning the knob.

Alarm System

The safe is equipped with a smart alarm system to deter unauthorized access:

- **3 Incorrect Code Inputs:** If an incorrect passcode is entered three consecutive times, the keypad will be blocked for 20 seconds.
- **6 Incorrect Code Inputs:** If an incorrect passcode is entered six consecutive times, the keypad will be blocked for 300 seconds, and an audible alarm will sound for 300 seconds.



This diagram explains the safe's integrated smart alarm system. It shows that after three incorrect code entries, the keypad will be temporarily blocked for 20 seconds. If six incorrect codes are entered, the keypad will be blocked for 300 seconds, and an audible alarm will sound for the same duration.

5. MAINTENANCE

Battery Replacement

When the batteries are low, the indicator light may dim or the keypad may not respond. Replace all 4 AA batteries promptly to ensure continuous operation.

1. Open the safe door.
2. Remove the battery compartment cover.
3. Replace all old batteries with new 4 AA alkaline batteries, observing correct polarity.
4. Replace the battery compartment cover.

Cleaning

To maintain the appearance and functionality of your safe box:

- Wipe the exterior with a soft, damp cloth. Avoid abrasive cleaners or solvents.

- Ensure the keypad and keyhole remain free of dust and debris.

6. TROUBLESHOOTING

Common Issues

- **Keypad not responding:** Check battery installation and replace batteries if necessary.
- **Forgotten Passcode:** Use the emergency key to open the safe, then reset the passcode following the instructions in Section 4.
- **Safe will not open with passcode:** Ensure the correct passcode is entered and the knob is turned clockwise within 5 seconds of the green light appearing. If issues persist, use the emergency key.

Emergency Power Box Usage

If the internal batteries are completely depleted and you cannot open the safe with the digital keypad, use the emergency power box:

1. Insert 4 AA alkaline batteries into the emergency power box.
2. Plug the emergency power box into the external power port on the safe (usually located near the keypad).
3. Enter your passcode on the digital keypad and turn the knob to open the safe.
4. Once the safe is open, replace the internal batteries immediately.

7. SPECIFICATIONS

Feature	Detail
Brand	WASJOYE
Model Number	BXX
Product Dimensions	9"D x 10"W x 8.1"H
Lock Type	Electronic Combination Lock, Key
Color	Black
Capacity	0.5 Cubic Feet
Material	Alloy Steel
Mounting Type	Wall Mount
Item Weight	6.6 pounds (3 Kilograms)
Alarm System	Audible (after 6 incorrect code inputs)
Water Resistance	Not Water Resistant

ALL STEEL STRUCTURE



Anti-Prying



Anti-Collision



Anti-Drilling



Anti-Theft



This image illustrates the robust construction of the WASJOYE safe box, emphasizing its all-steel build. Icons represent its resistance to prying, collision, drilling, and general theft, showcasing its security features.

8. WARRANTY AND SUPPORT

WASJOYE is committed to providing quality products and customer service. If you have any questions, suggestions, or require assistance with your safe box, please contact us through the order details page on the platform where you made your purchase.

In the event that emergency keys are lost or locked inside the safe, replacement keys can be purchased separately by contacting customer support via your order details page.