

STRICH SDP-300S

STRICH SDP-300S Digital Piano 88 Keys Instruction Manual

Model: SDP-300S | Brand: STRICH

1. INTRODUCTION

Thank you for choosing the STRICH SDP-300S Digital Piano. This manual provides essential information for the proper setup, operation, and maintenance of your instrument. Please read it thoroughly before use to ensure optimal performance and longevity of your digital piano.

The STRICH SDP-300S features 88 hammer-action weighted keys with simulated ivory texture, designed to replicate the feel of a grand piano. It includes 25W x 2 speakers, 900 preset timbres, 700 drum rhythms, and 128 polyphony. Connectivity options include USB-MIDI and wireless capabilities, allowing for versatile use with teaching apps and other devices.

2. SAFETY INFORMATION

- Ensure all parts are complete and undamaged before installation.
- Read all installation and operating instructions carefully before using the instrument.
- Use only the provided power adapter (Input AC: 100V-240V, Output DC: 12V 3A, Adapter Transformer DC: 5.5mm x 2.2mm).
- Keep the instrument away from direct sunlight, heat sources, and moisture.
- Avoid placing heavy objects on the piano.
- Do not attempt to disassemble or repair the instrument yourself. Contact qualified service personnel.

3. SETUP AND ASSEMBLY

The STRICH SDP-300S Digital Piano is designed for straightforward assembly. Ensure you have adequate space and a clean surface for unpacking and assembly.

3.1. Unpacking the Piano

Carefully open the packaging. The box contains the main piano body, four metal legs, a three-pedal unit, a music stand, power adapter, and the user manual. Inspect all components for any signs of damage during transit.

MULTIFUNCTIONAL ELECTRONIC PIANO

900
SOUNDS

Suitable for different
music styles

700
DRUM RHYTHMS

Make practice
more fun

110
BEGINNER DEMO

Rich practice
content

2
AUTO-CHORD
MODES

Help you learn chord
knowledge easily

Image: Components neatly packed within the product box.

Text Description: A view inside the cardboard box showing the main piano body, wrapped in plastic, surrounded by protective foam. Various accessories are also visible in their compartments.

3.2. Assembling the Stand

1. Place the main piano body upside down on a soft, clean surface or on the provided styrofoam packaging to protect the keys and finish.
2. Attach the four metal legs to the designated points on the underside of the piano using the provided screws. Ensure all screws are tightened securely for stability.
3. Carefully flip the piano upright onto its assembled legs.



Image: Close-up of the underside of the piano showing screw holes for leg attachment.

Text Description: The bottom of the piano body, made of wood, with pre-drilled holes and metal plates where the four legs are to be attached using screws. This view highlights the sturdy construction for the stand.

3.3. Connecting Power and Pedals

1. Locate the power input port on the back panel of the piano. Plug in the provided power adapter.
2. Connect the three-pedal unit cable to the MIDI port located on the underside of the piano.
3. Place the music stand into the slot on the top panel of the piano.

SUPPORT BGM INPUT

Customizable playback of songs you practice



Wireless
Link



6.35 Wiring
Port

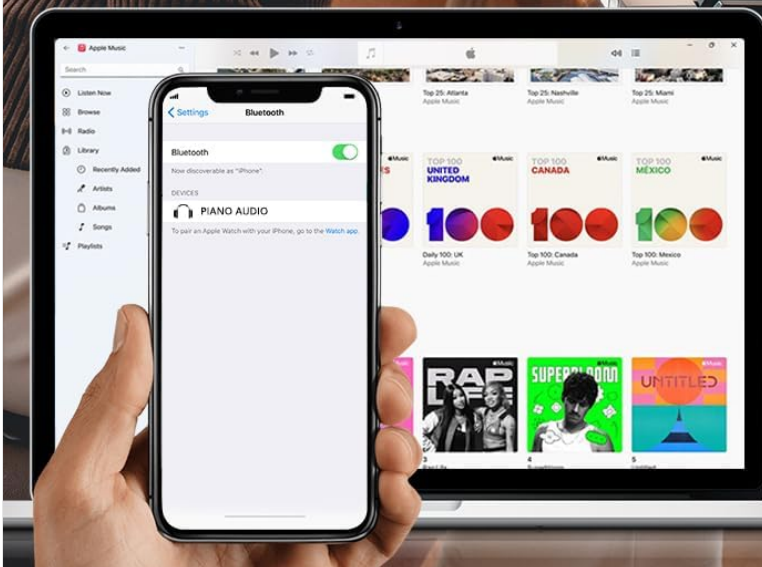


Image: A detailed view of the back panel of the piano, showing various input/output ports including power, USB, MIDI, phone, input, and sustain pedal connections.

Text Description: The back panel of the piano features an on/off switch, MIDI and USB ports, a power input (DC 12V), headphone jacks, an audio input, and a dedicated port for the sustain pedal unit. All ports are clearly labeled.

CONNECT TO MORE

Extend interfaces to more devices and explore more possibilities

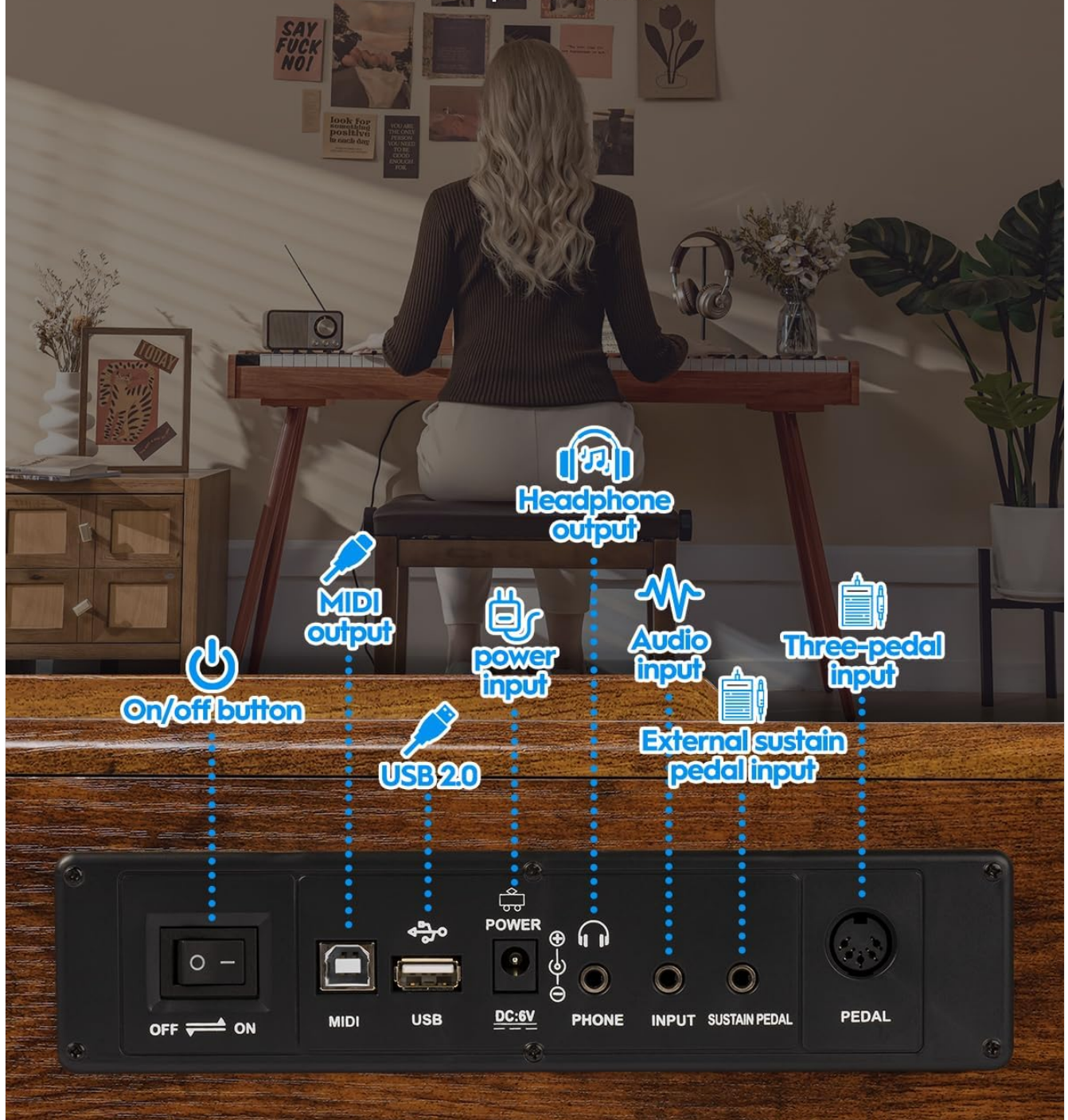


Image: The three-pedal unit with its connecting cable.

Text Description: A close-up of the three-pedal unit, designed to resemble traditional piano pedals, with a cable extending from its back for connection to the piano. The pedals are silver-colored against a wooden base.

4. OPERATING INSTRUCTIONS

The STRICH SDP-300S Digital Piano offers a wide range of features for an enriching musical experience. Familiarize yourself with the control panel and functions.

4.1. Powering On and Basic Playback

1. Press the ON/OFF switch on the back panel to power on the piano. The display will illuminate.
2. Adjust the master volume using the VOLUME knob on the control panel.
3. The default tone is Grand Piano (001). Begin playing the keys to experience the hammer-action feel and rich sound.

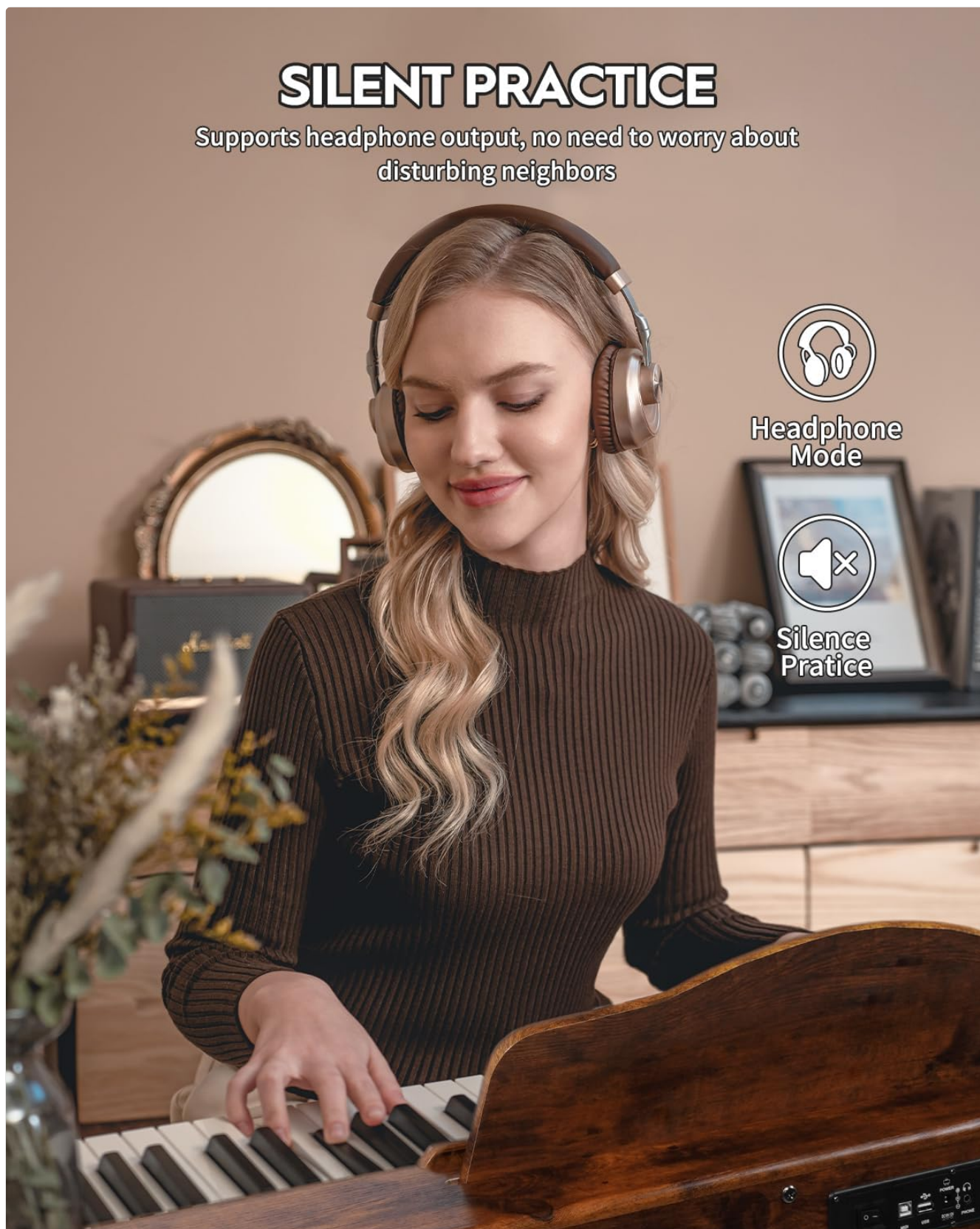


Image: Close-up of the control panel located on the left side of the piano keys.

Text Description: The control panel features a digital display, volume knob, and buttons for functions like Tone, Rhythm, Transpose, Tempo, Chord, Record, Play, Split, and Demo All. The power button is also integrated into this panel.

4.2. Selecting Tones and Rhythms

1. To select a tone, press the "TONE" button. The display will show the current tone number. Use the number keys (0-9) on the keyboard to input the desired tone number (e.g., 001 for Grand Piano).
2. To select a rhythm, press the "RHYTHM" button. Use the number keys to input the desired rhythm number.
3. The piano offers 900 preset timbres and 700 drum rhythms. Refer to the user manual for a complete list of available tones and rhythms.

4.3. Using Special Features

- **Transpose:** Use the "TRANSPOSE" button to change the key of the piano.
- **Tempo:** Adjust the playback speed of rhythms and demos using the "TEMPO" buttons.
- **Chord:** Activate the intelligent auto chord function using the "CHORD" button for automatic chord accompaniment.
- **Split/Layer:** Use the "SPLIT" button to divide the keyboard into two sections with different tones, or "LAYER" to combine two tones simultaneously.
- **Record/Playback:** Use the "REC" button to record your playing and the "PLAY" button to listen to it.
- **Headphone Jack:** Plug headphones into the 6.35mm jack for silent practice.

PERFECT GIFT FOR BEGINNERS

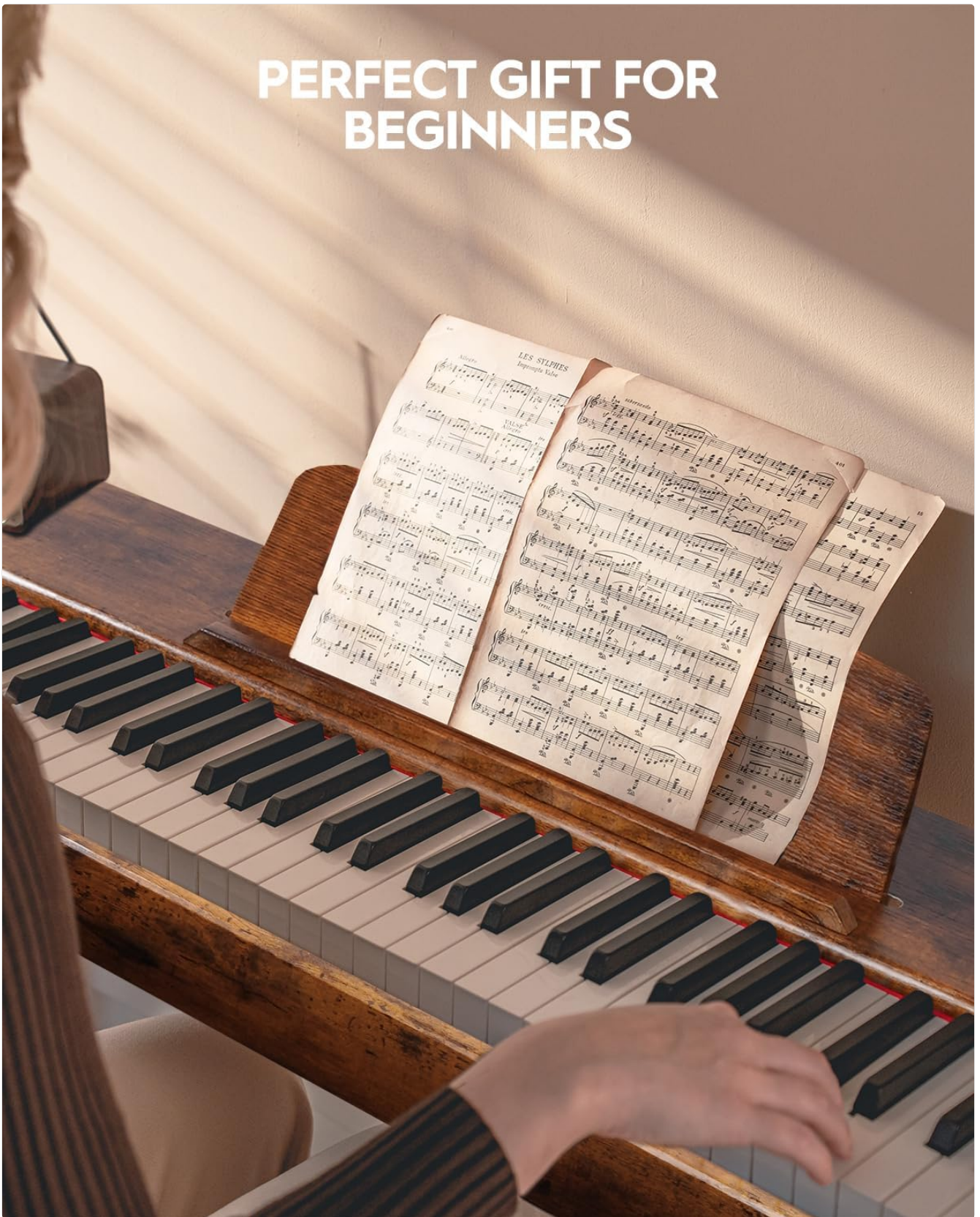


Image: A woman wearing headphones while playing the digital piano, illustrating the silent practice feature.

Text Description: The image shows a user engaged in playing the STRICH SDP-300S Digital Piano. The presence of headphones indicates the silent practice mode, allowing for private playing without disturbing others. This feature is ideal for focused learning sessions.

5. MAINTENANCE

Proper maintenance ensures the longevity and optimal performance of your STRICH SDP-300S Digital Piano.

- Clean the piano surface with a soft, dry cloth. Avoid abrasive cleaners or solvents.
- Keep the keys clean by wiping them gently with a slightly damp cloth.
- Protect the piano from dust by covering it when not in use.
- Avoid exposing the piano to extreme temperatures or humidity changes.

6. TROUBLESHOOTING

If you encounter any issues with your digital piano, refer to the following common troubleshooting steps:

- **No Sound:** Ensure the power adapter is securely connected and the piano is turned on. Check the volume level and ensure headphones are not plugged in if you intend to use the speakers.
- **Keys Not Responding:** Verify that the piano is powered on and not in a demo mode that prevents manual playing.
- **Pedals Not Working:** Ensure the three-pedal unit is correctly connected to the MIDI port on the underside of the piano.
- **Bluetooth Connectivity Issues:** Ensure the piano's wireless function is enabled and your device's Bluetooth is turned on and discoverable.

For persistent issues, consult the full user manual or contact STRICH customer support.

7. SPECIFICATIONS

Feature	Detail
Model Name	SDP-300S
Number of Keys	88
Key Type	Hammer Action, Weighted, Simulated Ivory Texture
Speakers	25W x 2
Timbres	900 Preset
Drum Rhythms	700
Polyphony	128 (max)
Connectivity	USB-MIDI, Wireless, 6.35mm Jack, USB 2.0
Product Dimensions	12.4"D x 51.2"W x 29.2"H
Item Weight	47.3 pounds
Power Source	Corded Electric (Input AC: 100V-240V, Output DC: 12V 3A)

8. PRODUCT VIDEOS

8.1. High cost performance: 88-key fully weighted electric piano

Your browser does not support the video tag.

Video Description: This video provides a detailed overview of the 88-key fully weighted electric piano, highlighting its features and performance. It showcases the piano's sound quality, key action, and various functions, emphasizing its value for money.

8.2. STRICH Digital Piano 88 Keys SDP-300S

Your browser does not support the video tag.

Video Description: A concise video demonstrating the STRICH SDP-300S Digital Piano. It offers a quick look at the piano's design and some of its sound capabilities, providing a brief introduction to the product.

9. WARRANTY AND SUPPORT

For warranty information, technical support, or service inquiries, please refer to the contact details provided in your user manual or visit the official STRICH website.

The product is sold by Massenan Music and fulfilled by Amazon. Standard return policy applies.