

## MEETION Director-B Ergonomic Wireless Keyboard and Mouse Combo

# MEETION Director-B Ergonomic Wireless Keyboard and Mouse Combo User Manual

Model: Director-B Ergonomic Wireless Keyboard and Mouse Combo  
Brand: MEETION

### INTRODUCTION

Thank you for choosing the MEETION Director-B Ergonomic Wireless Keyboard and Mouse Combo. This product is designed to enhance your productivity and comfort with its ergonomic split design, multi-device connectivity, and precise control. This manual will guide you through the setup, operation, maintenance, and troubleshooting of your new keyboard and mouse combo.



Image: The MEETION Director-B Ergonomic Wireless Keyboard and Mouse Combo, showcasing the split keyboard design, integrated wrist rest, and vertical mouse with USB receiver and USB-C adapter.

## SETUP GUIDE

### Package Contents:

- Ergonomic Split Wireless Keyboard
- Ergonomic Vertical Wireless Mouse
- 2.4G USB Receiver
- USB-C Adapter
- Charging Cable (USB-A to USB-C)
- User Manual (this document)

### Initial Charging:

Before first use, it is recommended to fully charge both the keyboard and the mouse. Connect the charging cable to the USB-C port on each device and plug the other end into a USB power source (e.g., computer USB port, wall adapter). The charging indicator lights will show charging status.



## RECHARGEABLE CONVENIENCE

Low power alert to bid farewell to battery worries

Image: The keyboard and mouse connected via USB-C cables for charging, illustrating the rechargeable convenience.

## Connecting Your Devices:

The combo supports three connection modes: 2.4G Wireless (via USB receiver) and two Bluetooth channels (BT1, BT2). You can connect up to three devices simultaneously and switch between them.

### 2.4G Wireless Connection:

1. Locate the 2.4G USB receiver. If your device only has USB-C ports, use the included USB-C adapter.
2. Plug the USB receiver (or USB receiver with adapter) into an available USB-A or USB-C port on your computer.
3. Turn on the keyboard and mouse using their respective ON/OFF switches.
4. On the keyboard, press the '2.4G' button. The corresponding indicator light will turn green, indicating 2.4G mode.
5. The keyboard and mouse should automatically connect to your device.



Image: Diagram showing the steps to connect the keyboard via 2.4G wireless, including plugging in the USB receiver and selecting the 2.4G mode on the keyboard.



Image: Diagram illustrating the steps to connect the mouse via 2.4G wireless, showing the USB receiver and the mouse's 2.4G indicator.

### Bluetooth Connection (BT1 / BT2):

1. Turn on the keyboard and mouse using their respective ON/OFF switches.
2. On the keyboard, press and hold either the 'BT1' or 'BT2' button for 3-5 seconds until the corresponding indicator light (blue) starts blinking rapidly. This indicates pairing mode.
3. On your device (computer, laptop, tablet, smartphone), go to Bluetooth settings and search for new devices.



4. Select 'MEETION Keyboard' from the list of available devices to pair.
5. Repeat steps 2-4 for the mouse. Press and hold the Bluetooth button on the mouse until its blue indicator blinks, then select 'MEETION Mouse' from your device's Bluetooth list.
6. Once paired, the indicator light will stop blinking and remain solid.

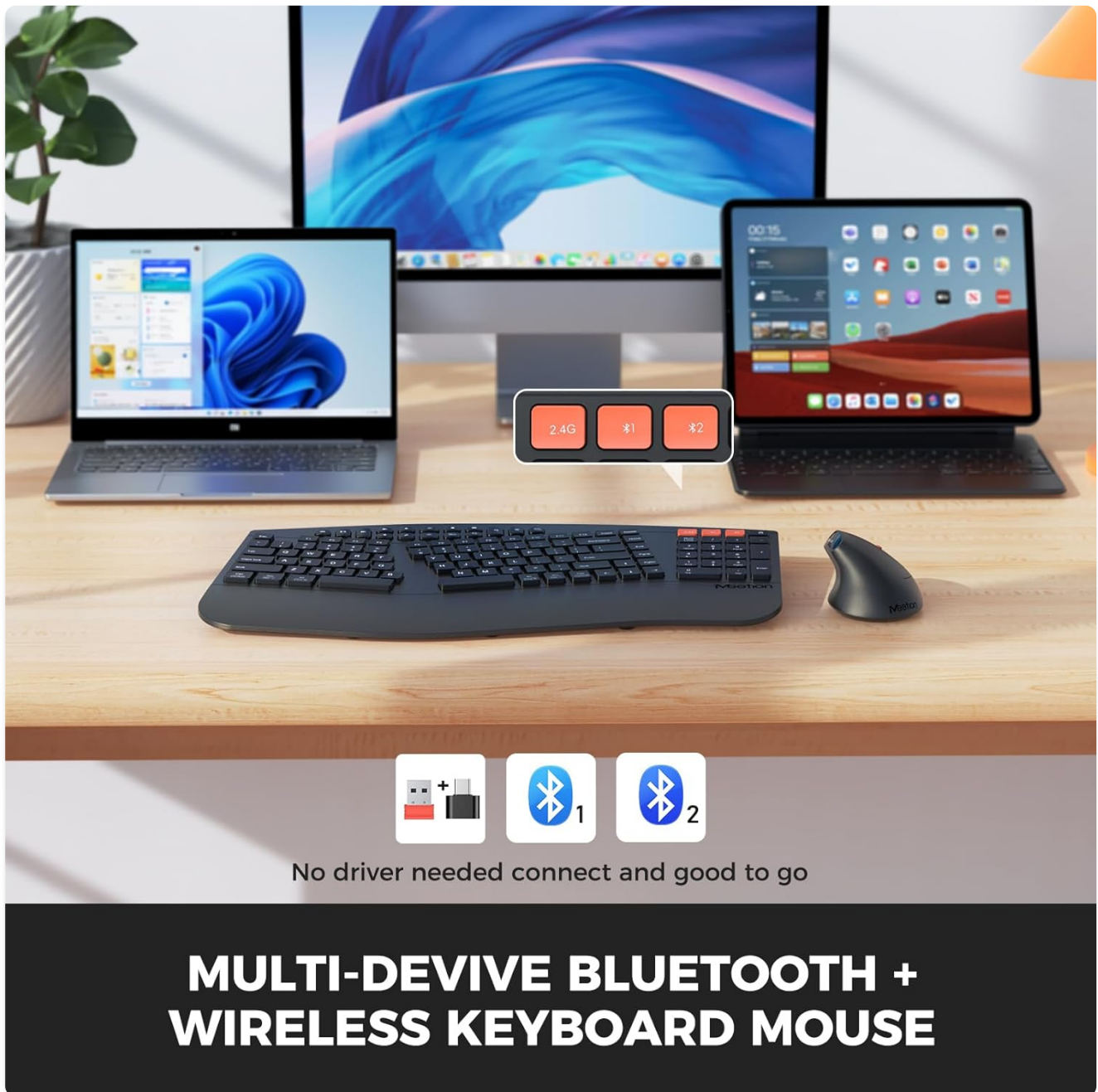


Image: A setup showing the keyboard and mouse connected to multiple devices (laptop, desktop, tablet) via 2.4G and Bluetooth, highlighting seamless switching.

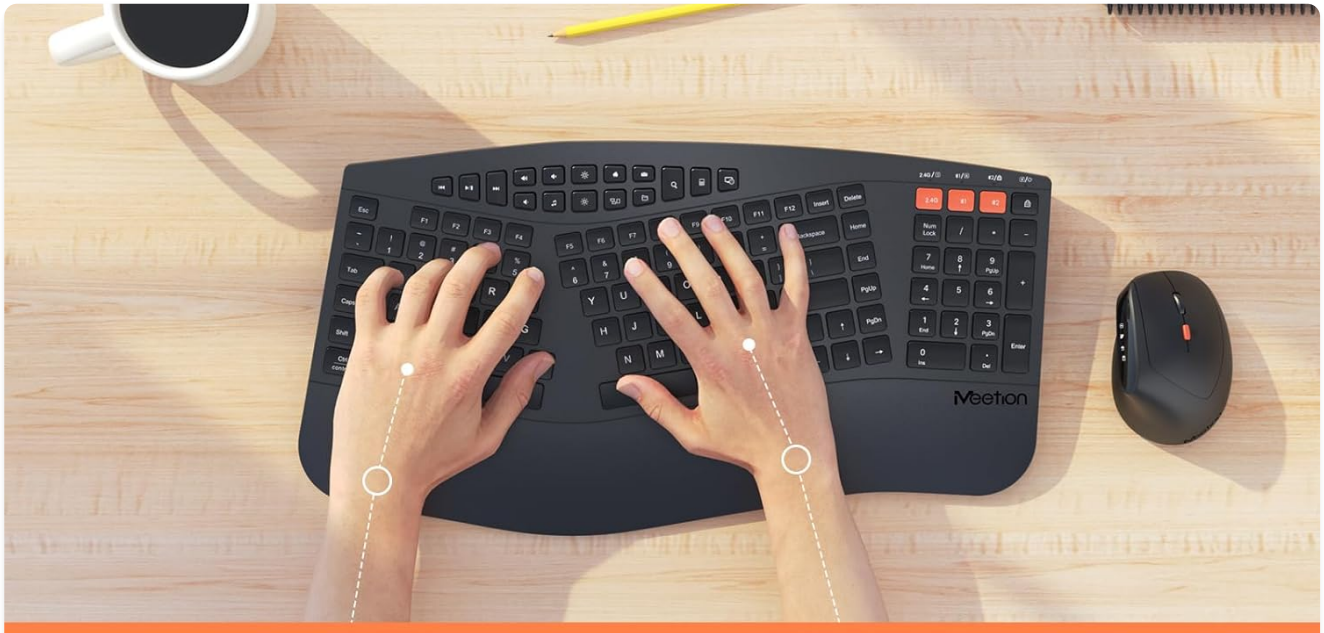
## OPERATING INSTRUCTIONS

### Keyboard Features:

- **Ergonomic Split Design:** The keyboard's split layout and integrated wrist rest promote a natural hand and wrist posture, reducing strain during extended use.
- **Multi-Channel Connectivity:** Easily switch between 2.4G, Bluetooth 1, and Bluetooth 2 channels by pressing the

corresponding buttons on the top right of the keyboard.

- **Media Controls & Shortcuts:** Dedicated function keys provide quick access to media playback, volume control, and other common shortcuts.
- **Operating System Switch:** A switch on the keyboard allows you to toggle between Mac and Windows layouts for optimal compatibility.



## SPLIT DESIGN AND LEATHER CUSHIONED

Provide ultimate comfort for your wrist and palm

Image: A top-down view of the ergonomic split keyboard with hands positioned, illustrating the comfortable and natural typing posture.



## SPLIT DESIGN AND LEATHER CUSHIONED

Provide ultimate comfort for your wrist and palm

Image: An illustration showing the ergonomic angle of the keyboard, designed to reduce wrist strain.

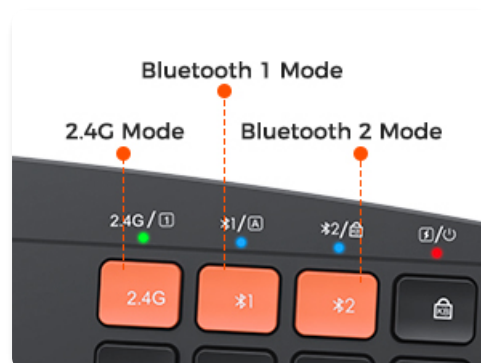


Image: Close-up of the keyboard's connection mode buttons (2.4G, BT1, BT2) and their corresponding indicator lights.



Image: Close-up of the keyboard's Mac/WIN compatibility switch and the main ON/OFF power switch.

## Mouse Features:

- **Ergonomic Vertical Design:** The vertical orientation of the mouse promotes a natural handshake grip, reducing wrist pronation and discomfort.
- **Adjustable DPI:** Cycle through DPI settings (800, 1200, 1600) to adjust cursor sensitivity to your preference. The DPI button is located on the top of the mouse.
- **Multi-Channel Connectivity:** Similar to the keyboard, the mouse supports 2.4G, Bluetooth 1, and Bluetooth 2 connections, allowing seamless switching between devices.



Image: Close-up of the vertical mouse showing its power, 2.4G, BT1, and BT2 indicator lights.



Image: Underside view of the mouse, highlighting the DPI adjustment button and the ON/OFF switch.

## MAINTENANCE

### Cleaning:

- Turn off both the keyboard and mouse before cleaning.
- Use a soft, lint-free cloth slightly dampened with water or a mild cleaning solution.



- Avoid using harsh chemicals, abrasives, or solvents.
- Do not spray liquid directly onto the devices.
- For cleaning between keys, use compressed air or a small brush.

**Battery Care:**

- The keyboard has a 300mAh lithium-ion battery, and the mouse has a 400mAh lithium-ion battery.
- Recharge the devices when the low power alert is indicated (usually a blinking red light).
- Avoid fully draining the battery frequently to prolong its lifespan.
- If storing the devices for an extended period, charge them to about 50% and turn them off.

**TROUBLESHOOTING**

**Connectivity Issues:**

- **Device not connecting:** Ensure the keyboard and mouse are turned on and fully charged. Verify that the correct connection mode (2.4G, BT1, or BT2) is selected on the keyboard/mouse and that your device's Bluetooth is enabled.
- **Intermittent connection:** Move the devices closer to your computer. Avoid placing them near other wireless devices that might cause interference (e.g., Wi-Fi routers, cordless phones).
- **Bluetooth pairing failure:** Remove the device from your computer's Bluetooth list and attempt to pair again. Ensure the keyboard/mouse is in pairing mode (blinking blue light).

**Keyboard/Mouse Not Responding:**

- Check battery level and recharge if necessary.
- Ensure the USB receiver is securely plugged in for 2.4G mode.
- Try restarting your computer or the keyboard/mouse.
- If using Bluetooth, ensure the device is not connected to another computer.

**Cursor Movement Issues (Mouse):**

- Clean the optical sensor on the bottom of the mouse.
- Try adjusting the DPI setting to a different level.
- Ensure you are using the mouse on a suitable surface (non-reflective, non-transparent).

**SPECIFICATIONS**

Product Dimensions	17.4 x 9.2 x 1.2 inches
Item Weight	3.14 pounds
Batteries	1 Lithium Polymer batteries required (included)
Connectivity Technology	Bluetooth, USB (2.4G Wireless)
Special Feature	Ergonomic Design, Multi-Device Connectivity, Rechargeable



Compatible Devices	Laptop, Personal Computer, Tablet, Smartphone
Keyboard Battery	300mAh Lithium-ion
Mouse Battery	400mAh Lithium-ion
Adjustable Mouse DPI	800, 1200, 1600



## SPLIT DESIGN AND LEATHER CUSHIONED

Provide ultimate comfort for your wrist and palm

Image: A diagram illustrating the physical dimensions of both the ergonomic keyboard and the vertical mouse.

### WARRANTY AND SUPPORT

For warranty information and customer support, please refer to the documentation included with your product or visit the official MEETION website. You may also contact the seller directly for assistance with product-related inquiries. Please retain your proof of purchase for warranty claims.

