



[Manuals.plus](#) /

> [Parryware](#) /

> Parryware Linea Plus Concealed Flush Tank Instruction Manual (Models E812599 / E8221A1)

Parryware E812599

Parryware Linea Plus Concealed Flush Tank Instruction Manual

Model Numbers: E812599 / E8221A1

Brand: Parryware

[Introduction](#)

[Setup & Installation](#)

[Operating Instructions](#)

[Maintenance](#)

[Troubleshooting](#)

[Specifications](#)

[Warranty](#)

[Customer Support](#)

1. INTRODUCTION

This manual provides comprehensive instructions for the installation, operation, maintenance, and troubleshooting of your Parryware Linea Plus Concealed Flush Tank. This product is designed for wall-hung commodes, offering a space-saving and modern aesthetic for your bathroom. It features a dual-flush mechanism for efficient water usage and is constructed from durable materials for long-lasting performance.



Figure 1.1: Parryware Linea Plus Concealed Flush Tank with Half Frame and Flush Plate.

The Linea Plus system integrates seamlessly into modern bathroom designs, concealing the flush tank within the wall. This not only enhances the visual appeal but also contributes to a quieter flushing experience.

2. SETUP AND INSTALLATION

The Parryware Linea Plus Concealed Flush Tank is designed for straightforward installation. It is crucial to follow these instructions carefully to ensure proper function and prevent damage. Professional installation is recommended.

2.1. Components Included

- 1 Unit of Concealed Flush Tank (with half frame)
- 1 Unit of Square Push Plate
- Necessary hardware for installation

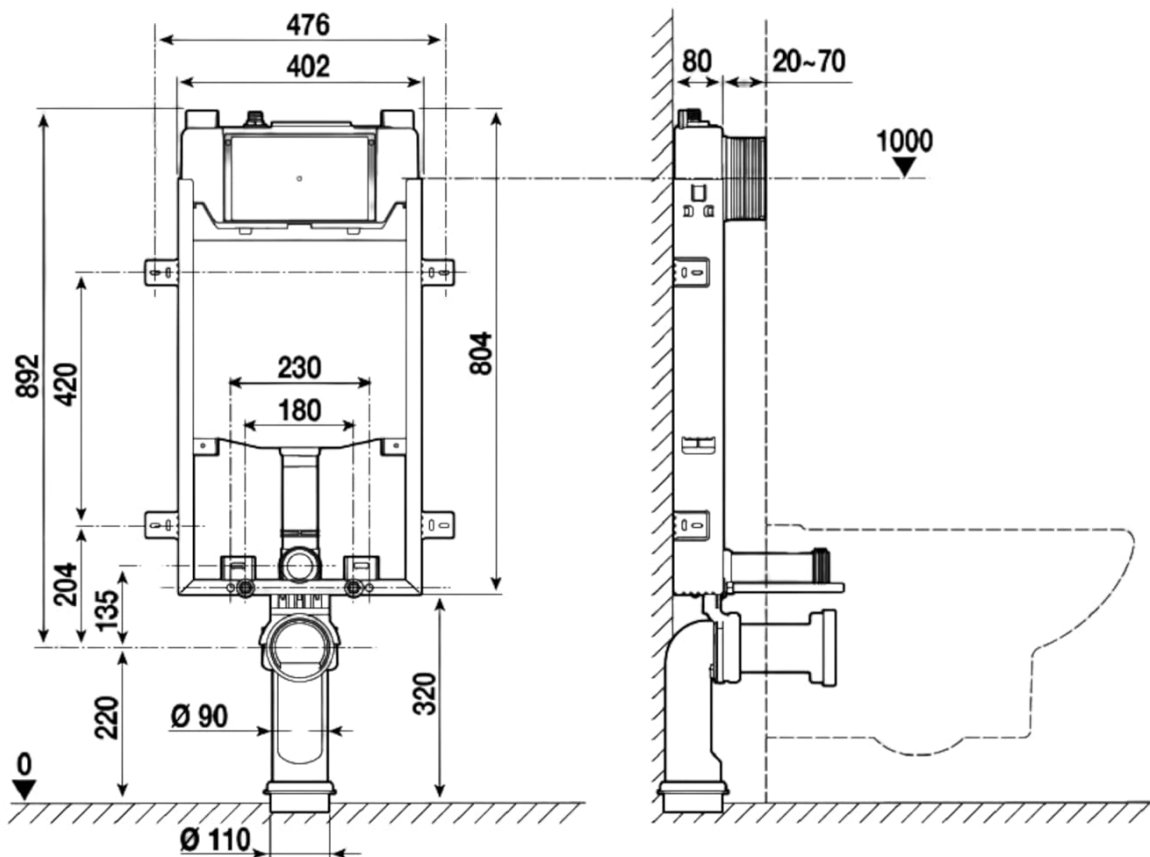
2.2. Pre-Installation Checks

- Ensure the wall structure can support the weight of the flush tank and the wall-hung commode when filled with water.
- Verify that water supply lines and drainage connections are available at the installation site.
- Unpack all components and check for any damage or missing parts.

2.3. Installation Steps

1. **Frame Mounting:** Securely mount the half frame of the concealed flush tank to the wall according to the provided dimension diagram. Ensure it is level and at the correct height for your wall-hung commode.
2. **Water Connection:** Connect the water supply to the inlet valve of the flush tank. Ensure all connections are tight to prevent leaks.
3. **Drainage Connection:** Connect the flush tank outlet to the commode's drainage system.
4. **Tank Enclosure:** Once the tank and connections are secure and tested, enclose the tank within the wall structure.
5. **Flush Plate Installation:** Install the square push plate onto the wall, connecting it to the flush mechanism of the tank.
6. **Final Checks:** Test the flush mechanism multiple times to ensure proper operation and check for any leaks.

PRODUCT DIMENSION



SKU Code: **E812599**

Product Name: **Linea Plus Concealed Cistern - Half Frame**

Unit: **mm**

Figure 2.1: Product Dimension Diagram (SKU Code: E812599).



Figure 2.2: Concealed Cistern with Half Frame, showing silent filling tank.

3. OPERATING INSTRUCTIONS

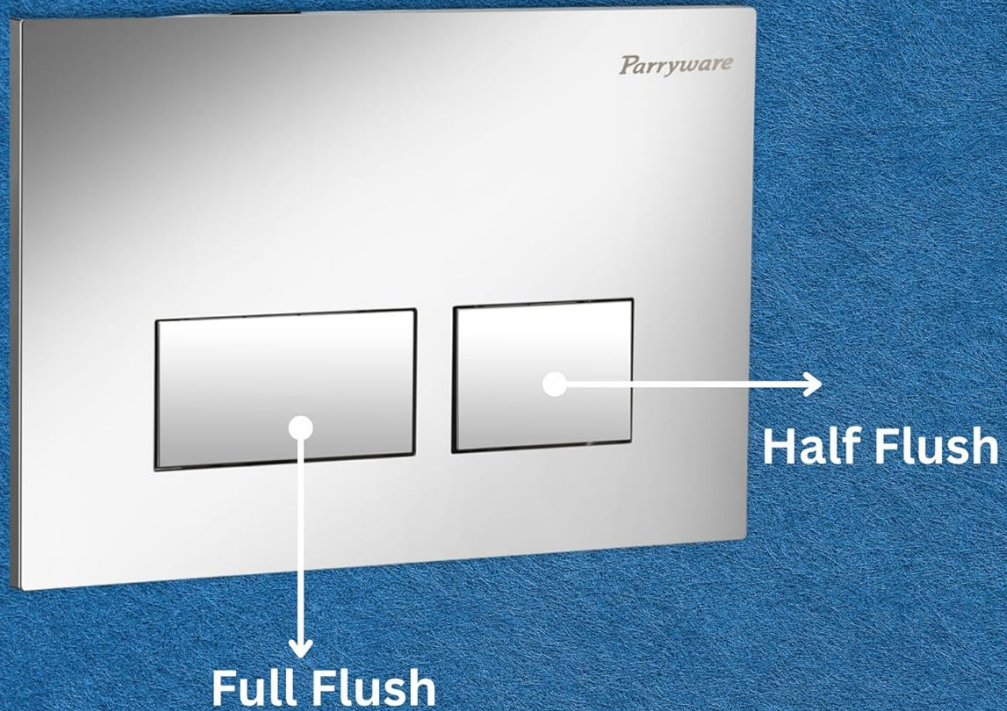
The Parryware Linea Plus Concealed Flush Tank features a dual flushing mechanism designed for water efficiency.

3.1. Dual Flush Mechanism

The flush plate includes two buttons for different flushing volumes:

- **Half Flush (Smaller Button):** Designed for liquid waste, this option uses a reduced amount of water (typically 3 liters) to conserve water.
- **Full Flush (Larger Button):** Designed for solid waste, this option uses the full tank volume (typically 6 liters) for thorough cleaning.

DUAL FLUSHING MECHANISM




MULTILAYER
CHROME PLATING


NOISELESS
FLUSHING


SLEEK
DESIGN


CORROSION
RESISTANT

Figure 3.1: Dual Flushing Mechanism.

To operate, simply press the desired button on the flush plate. The tank is designed for silent filling, ensuring a quiet bathroom experience.

4. MAINTENANCE

Regular maintenance ensures the longevity and optimal performance of your concealed flush tank.

4.1. Cleaning the Flush Plate

- Clean the flush plate regularly with a soft cloth and mild, non-abrasive cleaner.
- Avoid using harsh chemicals or abrasive pads, as these can damage the finish.

4.2. Filter Net Cleaning

The flush tank is equipped with a fine filter net to prevent debris from entering the mechanism. This filter may require periodic cleaning, especially in areas with hard water or water impurities.

- To access the filter net, it may be necessary to remove the flush plate and access panel. Refer to the

installation guide for specific access instructions.

- Carefully remove the filter net and rinse it under running water to remove any accumulated debris.
- Reinstall the clean filter net and reassemble the components.

4.3. General Inspection

- Periodically check for any signs of leaks around the connections.
- Ensure the flush mechanism operates smoothly. If it feels stiff, consult a professional plumber.

5. TROUBLESHOOTING

This section addresses common issues you might encounter with your concealed flush tank.

Problem	Possible Cause	Solution
Weak Flush / Insufficient Water Flow	<ul style="list-style-type: none">◦ Clogged filter net◦ Low water pressure◦ Obstruction in the flush mechanism	<ul style="list-style-type: none">◦ Clean the filter net (refer to Section 4.2).◦ Check household water pressure.◦ Contact a qualified plumber for inspection.
Continuous Water Running	<ul style="list-style-type: none">◦ Faulty fill valve◦ Improperly seated flush valve seal	<ul style="list-style-type: none">◦ Inspect and adjust or replace the fill valve.◦ Check and clean the flush valve seal for debris.
Flush Plate Not Responding	<ul style="list-style-type: none">◦ Disconnection of flush rods◦ Damaged flush plate mechanism	<ul style="list-style-type: none">◦ Ensure flush rods are correctly connected to the tank mechanism.◦ Contact customer support or a plumber for repair.
Visible Leaks	<ul style="list-style-type: none">◦ Loose connections◦ Damaged seals or pipes	<ul style="list-style-type: none">◦ Tighten all accessible connections.◦ Immediately shut off water supply and contact a plumber.

If you are unable to resolve an issue using these troubleshooting steps, please contact customer support or a qualified plumber.

6. PRODUCT SPECIFICATIONS

Feature	Detail
Brand	Parryware
Model Numbers	E812599 / E8221A1
Material	High Density Polyethylene (HDPE), Stainless Steel
Item Weight	4 Kilograms
Shape	Rectangular
Unit Count	1 Piece (Concealed Flush Tank with Half Frame and Flush Plate)

Feature	Detail
Flushing Type	Dual Flush (3/6 Litres)
Design	Concealed, Space-Saving
Features	Noiseless Flushing, Multilayer Chrome Plating (on flush plate), Corrosion Resistant



Figure 6.1: Key Features of the Linea Plus Concealed Flush Tank.

7. WARRANTY INFORMATION

The Parryware Linea Plus Concealed Flush Tank comes with a **10-year warranty** from the date of purchase. This warranty covers manufacturing defects under normal use and service.

Please retain your proof of purchase for warranty claims. The warranty does not cover damage resulting from improper installation, misuse, abuse, accident, or unauthorized repairs.



Figure 7.1: 10-Year Warranty Badge.

8. CUSTOMER SUPPORT

For any queries, technical assistance, or warranty claims, please contact Parryware customer support:

- **Customer Care Number:** +91 7301 274 274
- **Manufacturer:** PARRYWARE
- **Packer Contact Information:** Roca Bathroom Products Private Limited, The Heritage, 41, Haddows Road Nungambakkam, Chennai - 600006.

When contacting support, please have your product model number (E812599 / E8221A1) and proof of purchase readily available.