

## Manuals+

[Q & A](#) | [Deep Search](#) | [Upload](#)

manuals.plus /

- › [WilTec](#) /
- › [WilTec T5 PTO Shaft 700-910 mm Instruction Manual](#)

### WilTec T5 PTO Shaft 700-910 mm

# WilTec T5 PTO Shaft 700-910 mm Instruction Manual

Model: T5 PTO Shaft 700-910 mm

## 1. INTRODUCTION

This manual provides essential information for the safe and effective use of your WilTec T5 PTO Shaft. A Power Take-Off (PTO) shaft is a critical component in agriculture, designed to transfer power from a tractor to various agricultural implements. This WilTec PTO shaft is engineered for high quality and durability, ensuring reliable performance under demanding conditions.

It is crucial to understand the specifications and operational guidelines to ensure the longevity and safe operation of the PTO shaft and connected equipment. Always select a PTO shaft that meets or exceeds the power requirements of your application.



Figure 1: WilTec T5 PTO Shaft, a robust power take-off shaft for agricultural machinery.

## 2. SAFETY INFORMATION

Always prioritize safety when operating machinery involving PTO shafts. Failure to follow safety instructions can result in serious injury or death.

- **Read the Manual:** Before installation or operation, thoroughly read and understand this instruction manual and the manuals for your tractor and implement.
- **Protective Shields:** Ensure all PTO shaft shields and guards are in place and in good condition on both the tractor and the implement. Never operate without proper shielding.
- **Proper Connection:** Always ensure the PTO shaft is correctly attached and secured to both the tractor and the implement.
- **Clothing:** Wear close-fitting clothing. Avoid loose clothing, jewelry, or long hair that could become entangled in rotating parts.
- **Clear Area:** Keep bystanders, especially children, away from operating machinery.
- **Disengage PTO:** Always disengage the PTO, shut off the tractor engine, and remove the key before performing any adjustments, maintenance, or clearing blockages.
- **Angle Limitations:** Do not exceed the recommended operating angles for the PTO shaft. Excessive angles can cause premature wear or failure.
- **Lubrication:** Follow recommended lubrication schedules to prevent overheating and wear.

### 3. PRODUCT COMPONENTS

---

The WilTec T5 PTO Shaft is constructed with robust materials for reliable power transmission. Understanding its components is essential for proper installation and maintenance.

# ROBUSTE ANTRIEBSWELLE

HOCHFESTE DREIECKRÖHRE AUS 16 Mn-STAHL



Figure 2: Exploded view diagram of the WilTec T5 PTO Shaft, labeling key components such as the universal joint, C45-steel yoke, plastic bushing, high-strength triangular tube, and safety chains.

Key components include:

- **Universal Joint:** Allows for angular misalignment between the tractor and implement.
- **Yoke (C45-Steel):** Connects the PTO shaft to the tractor and implement. Made from durable C45-steel.
- **High-Strength Triangular Tube:** The main shaft body, designed for robust power transfer.
- **Plastic Bushing:** Provides smooth operation and protection.
- **Safety Chains with Carabiner Hooks:** Essential for securing the PTO shaft and preventing accidental detachment.

# STANDARDGRÖÖSE 1 $\frac{3}{8}$ " , 34,9 MM

MIT LANDWIRTSCHAFTLICHEN ANBAUGERÄTEN KOMPATIBEL

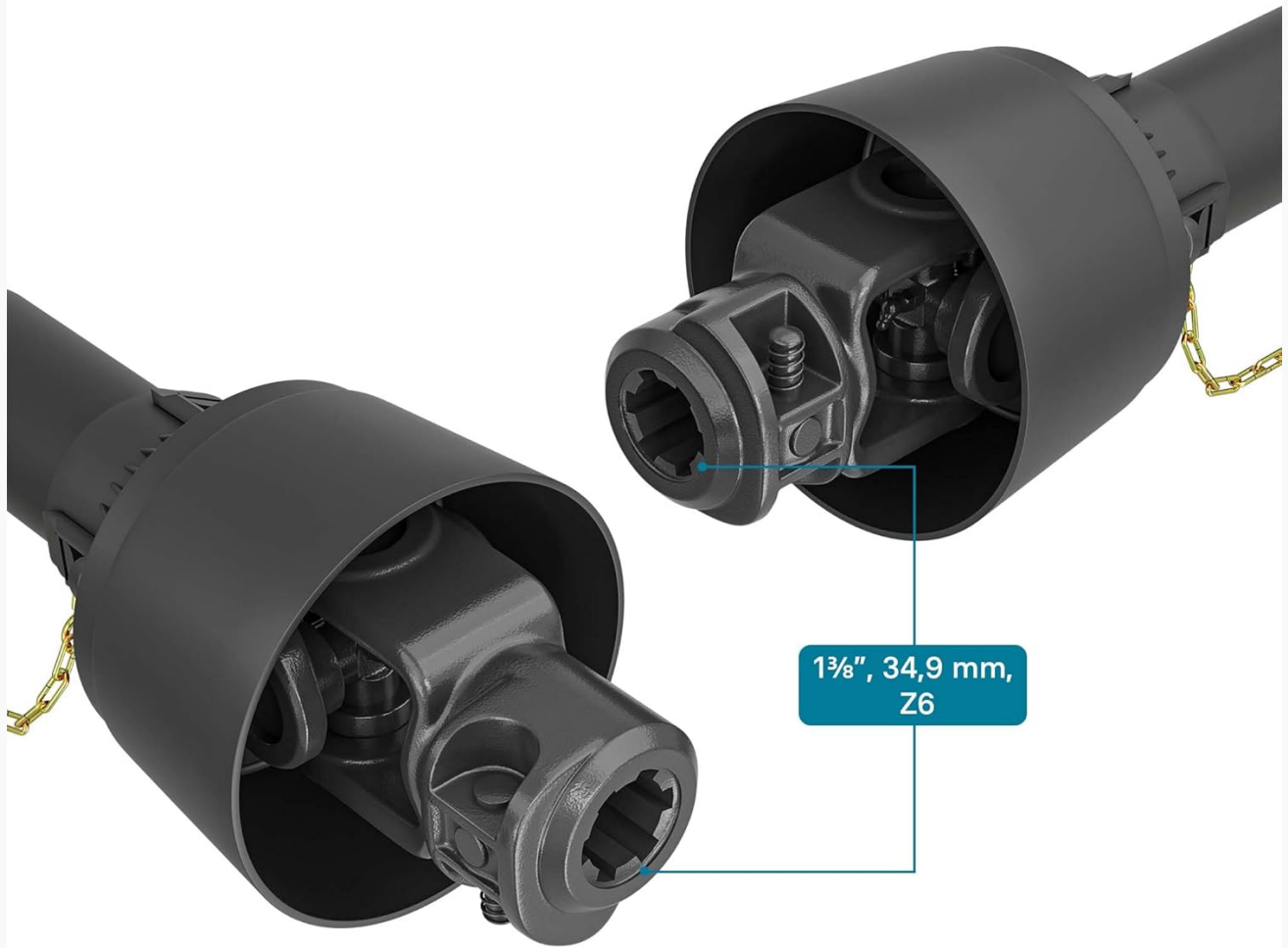


Figure 3: Close-up view of the WilTec T5 PTO Shaft's yoke, showing the standard size of 1 $\frac{3}{8}$  inches (34.9 mm) with Z6 teeth, compatible with agricultural implements.

## 4. INSTALLATION GUIDE

Proper installation is crucial for the safe and efficient operation of your PTO shaft. Follow these steps carefully.

# LEICHTER EINBAU

## EINFACH UND SCHNELL



### SCHRITT 1

Drei Stifte entfernen, die das Lager festhalten



### SCHRITT 2

Benötigte Länge bestimmen



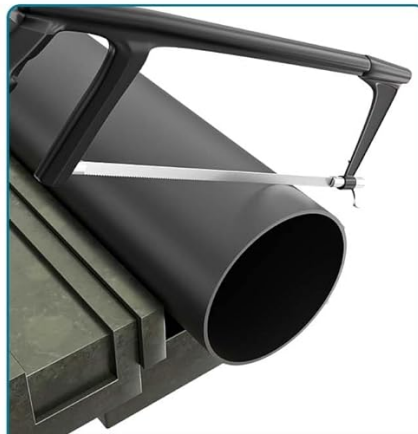
### SCHRITT 3

Röhre auf benötigte Länge kürzen



### SCHRITT 4

Mit Feile abgraten



### SCHRITT 5

Länge des äußeren und des inneren Kunststoffrohrs kürzen



### SCHRITT 6

Kraftübertragungs-  
welle zusammensetzen

Figure 4: Six-step visual guide for the easy installation of the WilTec T5 PTO Shaft.

1. **Step 1: Remove Pins.** Carefully remove the three pins that secure the bearings.
2. **Step 2: Determine Required Length.** Measure the distance between the tractor's PTO stub and the implement's input shaft. The PTO shaft should be able to operate at its shortest and longest working positions without binding or separating.
3. **Step 3: Shorten Tubes to Required Length.** If the PTO shaft is too long, cut the outer and inner tubes to the appropriate length. Ensure both ends are cut evenly.
4. **Step 4: Deburr with File.** After cutting, use a file to deburr all cut edges to prevent injury and ensure smooth operation.
5. **Step 5: Shorten Inner Plastic Tube.** Cut the inner plastic tube to match the shortened metal tubes.
6. **Step 6: Reassemble PTO Shaft.** Reassemble the PTO shaft, ensuring all components are correctly aligned and secured. Reinsert the pins to hold the bearings.

**Important:** A PTO shaft that is too short can disconnect during operation, while one that is too long can cause damage to the tractor or implement when the suspension moves or during turns. Always verify the length carefully.

## 5. OPERATION GUIDELINES



Operating the PTO shaft correctly ensures optimal performance and safety for your agricultural tasks.

## **BREITGEFÄCHERTE ANWENDUNGSMÖGLICHKEITEN IN LAND- UND FORSTWIRTSCHAFT**



Figure 5: WilTec T5 PTO Shaft in operation with an agricultural implement.

- **Power Matching:** Ensure the PTO shaft's power rating (kW/HP and Nm) is appropriate for the implement's requirements. The stated power data is valid for a diffraction angle of 5° for standard joints.
- **RPM Matching:** The PTO shaft's operating speed (RPM) should match the speed required by the attachment (typically 540 rpm or 1000 rpm). Note that the power output depends on the speed.
- **Yoke Type:** Verify that the yoke type (e.g., 1 3/8 inch, 6 teeth) on both the tractor and implement sides matches the PTO shaft.
- **Operating Angle:** Avoid operating the PTO shaft at extreme angles. High operating angles increase wear and reduce the shaft's lifespan.
- **Smooth Engagement:** Engage the PTO smoothly to prevent shock loads on the shaft and connected equipment.
- **Disengagement:** Always disengage the PTO before making turns, stopping, or leaving the tractor.



# ZAPFWELLE ZUM ANBAU AN EINEN TRAKTOR

KRAFTÜBERTRAGUNG IN LAND- UND FORSTWIRTSCHAFT



Figure 6: PTO Shaft for Tractor Attachment, showing length and power specifications.

## 6. MAINTENANCE

Regular maintenance is essential to ensure the longevity and safe operation of your WilTec T5 PTO Shaft.

- **Lubrication:** The output data of the PTO shaft in kW (HP) and Nm refers to an average service life of approximately 1000 hours, taking into account required lubrication intervals. Lubricate all grease points (universal joints, telescoping tubes) regularly as specified by the manufacturer of the PTO shaft and your equipment.
- **Inspection:** Periodically inspect the PTO shaft for signs of wear, damage, or corrosion. Check for loose bolts, worn bearings, or damaged shields.
- **Cleanliness:** Keep the PTO shaft clean and free from dirt, debris, and crop residue.
- **Shield Condition:** Ensure all protective shields are intact and securely fastened. Replace any damaged shields immediately.

## 7. TROUBLESHOOTING

This section provides general guidance for common issues. For complex problems, consult a qualified technician.

- **Vibration:** Excessive vibration can indicate an imbalance, worn universal joints, or incorrect operating angle. Inspect the shaft for damage and ensure proper alignment.
- **Noise:** Unusual noises may suggest a lack of lubrication, worn bearings, or internal damage. Disengage the PTO and inspect the shaft.
- **Overheating:** Overheating can be caused by insufficient lubrication, excessive operating angles, or continuous operation at maximum load. Ensure proper lubrication and check operating conditions.
- **Disconnection:** If the PTO shaft disconnects, it may be too short for the application or not properly secured. Re-evaluate the shaft length and ensure secure attachment.

## 8. SPECIFICATIONS

Detailed technical specifications for the WilTec T5 PTO Shaft.



Figure 7: Product Dimensions, showing collapsed and extended lengths.

| Specification | Value   |
|---------------|---|
| Model         | PTO shaft 700 mm, 620 Nm 1 3/8 inch Z6 to 1 3/8 inch Z6 |



| Specification                 | Value                    |
|-------------------------------|--------------------------|
| Manufacturer Part Number      | 64510                    |
| Length (Collapsed)            | 700 mm                   |
| Length (Extended)             | 910 mm                   |
| Max. Torque                   | 1050 Nm                  |
| Torque at 540 rpm             | 620 Nm                   |
| Power at 540 rpm              | 35 kW (47 HP)            |
| Torque at 1000 rpm            | 520 Nm                   |
| Power at 1000 rpm             | 54 kW (74 HP)            |
| Yoke Type 1 (Tractor Side)    | 1 3/8 inch (34.9 mm), Z6 |
| Yoke Type 2 (Attachment Side) | 1 3/8 inch (34.9 mm), Z6 |
| Item Weight                   | 23.7 pounds              |
| Package Dimensions            | 26.38 x 6.3 x 6.3 inches |

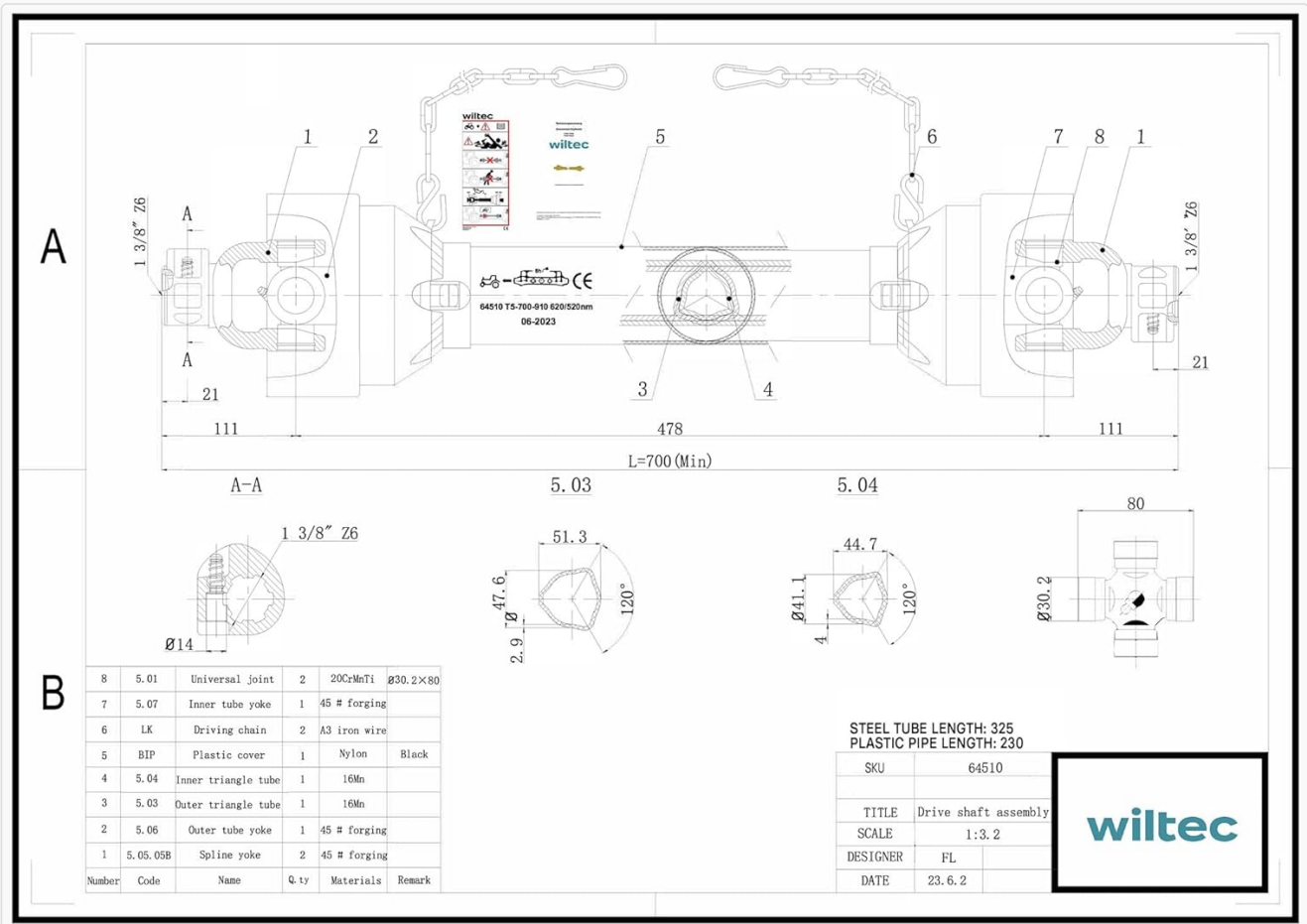







Figure 8: Detailed technical drawing with dimensions and parts list.

## 9. WARRANTY AND SUPPORT

For warranty information and customer support, please refer to the documentation provided with your purchase or visit the official WilTec website. Keep your purchase receipt as proof of purchase.

© 2023 WilTec. All rights reserved.

## Related Documents - T5 PTO Shaft 700-910 mm

|   |  |
|---|--|
|    | <p><a href="#">Manuale d'uso: Mini-incubatrice per 12 uova Wiltec 52016</a></p> <p>Scopri come utilizzare al meglio la tua mini-incubatrice Wiltec per 12 uova (modello 52016) con questo manuale d'uso completo. Include istruzioni dettagliate, consigli per l'incubazione e risoluzione problemi.</p>   |
|   | <p><a href="#">Manual de Usuario y Especificaciones Técnicas del Compresor de Aerógrafo WilTec AF189</a></p> <p>Este manual proporciona instrucciones detalladas para el uso seguro y eficiente del compresor de aerógrafo WilTec AF189 (Artículo 34205), incluyendo pautas de seguridad, especificaciones técnicas, manejo de la estación reductora, lista de piezas y normativas de conformidad.</p> |
|  | <p><a href="#">Wiltec Parcel Box 64118 Operation Manual and Assembly Guide</a></p> <p>Comprehensive operation manual and assembly guide for the Wiltec Parcel Box model 64118. Includes parts overview, step-by-step assembly instructions, safety precautions, and contact information.</p>   |
|  | <p><a href="#">WilTec Egg Incubator Article 50034 Operating Manual</a></p> <p>Comprehensive operating manual for the WilTec Egg Incubator, Article 50034. Provides instructions on setup, operation, temperature and humidity control, hatching phases for various poultry and reptiles, and disposal guidelines.</p>  |
|  | <p><a href="#">Bedienungsanleitung Wiltec Dampfreiniger für Tapetenentfernung</a></p> <p>Umfassende Bedienungsanleitung für den Wiltec Dampfreiniger, inklusive Sicherheitshinweisen, Erstanwendung, Anwendungstipps zur Tapetenentfernung und Pflegehinweisen.</p>  |



**wiltec**



Technical changes warned:  
Illustrations, functional steps, and technical data may deviate insignificantly due to continuous further developments.

## Wiltec Petrol Brushcutter with Wheels Operating Instructions and Safety Guide

Comprehensive operating instructions and safety guide for the Wiltec Petrol Brushcutter with Wheels (Model 64746). Covers proper use, maintenance, troubleshooting, and safety precautions for safe and effective operation.