



[Manuals.plus](#) /

> [COBIZI](#) /

> COBIZI 13x26 Pop Up Tent Instruction Manual

COBIZI main_canopy

COBIZI 13x26 Pop Up Tent Instruction Manual

Model: main_canopy

1. PRODUCT OVERVIEW

The COBIZI 13x26 Pop Up Tent is a heavy-duty canopy designed for various outdoor events, including family gatherings, parties, weddings, and exhibitions. It offers a spacious area of 344.5 square feet, accommodating over 20 people. This tent features a durable framework, upgraded sunshade fabric with UPF 50+ protection and PU1500MM waterproofing, and removable sidewalls for versatile usage.



Image 1: Overview of the COBIZI 13x26 Pop Up Tent, highlighting its robust frame and large capacity.

2. SAFETY INFORMATION

Important: Ensure the tent is properly secured to the ground, especially in windy conditions. Remove the top cover during heavy rain for longer service life. Failure to do so may result in damage to the tent or personal injury.

3. PACKAGE CONTENTS

Before beginning assembly, verify that all components are present in the package:

- 1x Frame
- 1x Canopy Top
- 4x Walls with Windows
- 2x Walls with Zippers
- 1x Roller Bag
- 4x Ropes
- 10x Stakes

- 4x Sandbags
- 1x Manual (this document)

PACKING LIST

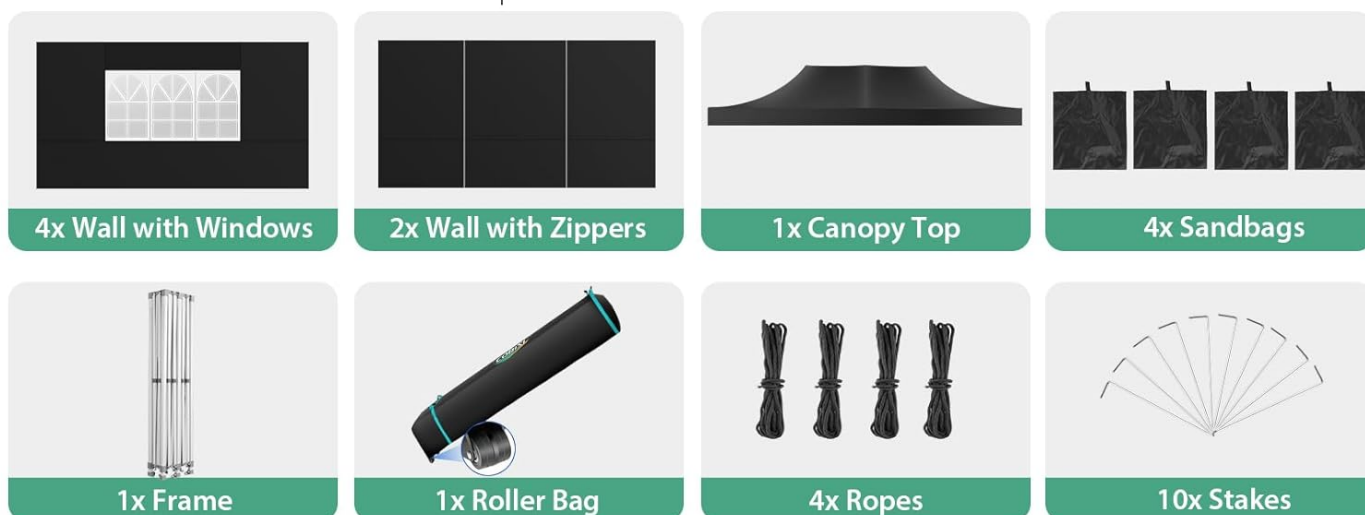


Image 2: Detailed view of the tent's packing list, illustrating each component.

4. SETUP INSTRUCTIONS

The COBIZI Pop Up Tent is designed for easy setup. For optimal stability and ease, it is recommended that at least four people assist with the initial frame unfolding.

1. **Step 1: Open the Canopy Frame.** Place the folded frame on the ground and slightly unfold it.
2. **Step 2: Secure the Tent Cover.** Place the canopy top over the partially unfolded frame. Attach the corners of the top cover to the frame using the integrated Velcro fasteners.
3. **Step 3: Extend the Legs.** Fully unfold the frame and extend the legs to the desired height. The labor-saving pull rings facilitate height adjustment.
4. **Step 4: Adjust Height and Attach Sidewalls.** Adjust the height of the tent as needed. Attach the sidewalls according to your preference using the hook and loop fasteners.

INSTANT SET UP

Enjoy Camping Outdoors Right Now

STEP 1

Open the canopy frame



STEP 2

Secure the tent cover



STEP 3

Extend the legs



STEP 4

Adjust height up and down

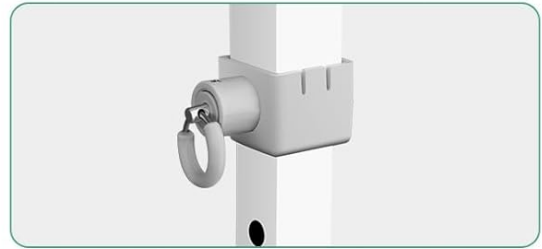


Image 3: Visual guide for the instant setup process.

DETAILS



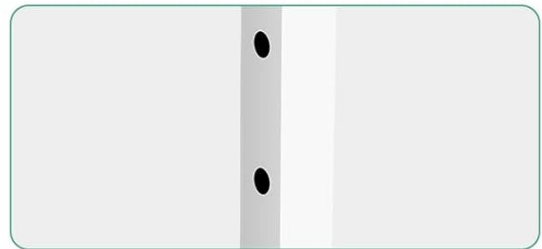
Heavy Duty Frame Design



Labor-saving Pull Ring



Fasten Ropes To Double Enhance Sturdiness



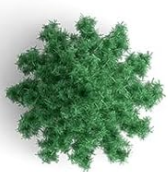
Adjustable Height Leg

Image 4: Key structural details for setup and stability.

5. OPERATING INSTRUCTIONS

The COBIZI Pop Up Tent offers versatile usage options thanks to its removable sidewalls. It comes with six side panels: two with zippers for easy access and four with windows for visibility.

- **Customizable Enclosure:** You can attach different numbers of sidewalls to suit your needs, providing protection from sun and rain, or adding privacy.
- **Ventilation and Light:** The window panels allow light into the tent and offer a view of the surroundings, while the zippered panels provide convenient entry and exit points.
- **Event Versatility:** Ideal for various outdoor settings such as backyard gatherings, garden parties, camping, BBQ events, flea market stands, and more.



MERRY CHRISTMAS



Image 5: Example of the tent in use with sidewalls for a gathering.

PACKING LIST

 1x Canopy Top	 1x Frame	 1x Roller Bag	 10x Stakes
 4x Wall with Windows			 1x Manual
 2x Wall with Zippers			 4x Sandbags
			 4x Ropes

Image 6: Close-up of a window panel, demonstrating visibility.

6. MAINTENANCE

Proper maintenance will extend the lifespan of your COBIZI Pop Up Tent:

- **Rain Protection:** While the 550D Oxford canopy fabric has PU1500MM waterproofing, it is highly recommended to remove the top cover during prolonged or heavy rain to prevent water accumulation and ensure long service life.
- **Cleaning:** Clean the canopy fabric and frame with mild soap and water. Avoid harsh chemicals or abrasive cleaners that could damage the material.
- **Drying:** Always ensure the canopy and sidewalls are completely dry before folding and storing to prevent mold and mildew growth.
- **Storage:** Store the tent in its roller bag in a cool, dry place away from direct sunlight when not in use.



Image 7: Visual representation of the tent's weather resistance features.

7. TROUBLESHOOTING

Addressing common issues you might encounter:

- **Tent Instability in Wind:**

Ensure all ropes are properly secured and stakes are firmly driven into the ground. Utilize the provided sandbags for additional weight and stability, especially in windy conditions. The durable high-grade corrosion-resistant steel truss frame is designed for wind resistance, but proper anchoring is crucial.

- **Water Accumulation on Canopy:**

The canopy fabric is designed for appropriate tension to allow rainwater to slide off. If water is pooling, check that the frame is fully extended and the canopy is tautly attached. As a preventative measure, remove the top cover during heavy rainfall.

- **Difficulty Adjusting Height:**

Ensure the labor-saving pull rings are fully disengaged before attempting to adjust the leg height. Apply even pressure when raising or lowering the legs. If a pull ring gets stuck, gently wiggle the leg while pulling the ring to release it.

COMPARISON OF DETAIL

Firm In Structure,
The Frame Weighs
142lbs/64.2Kg



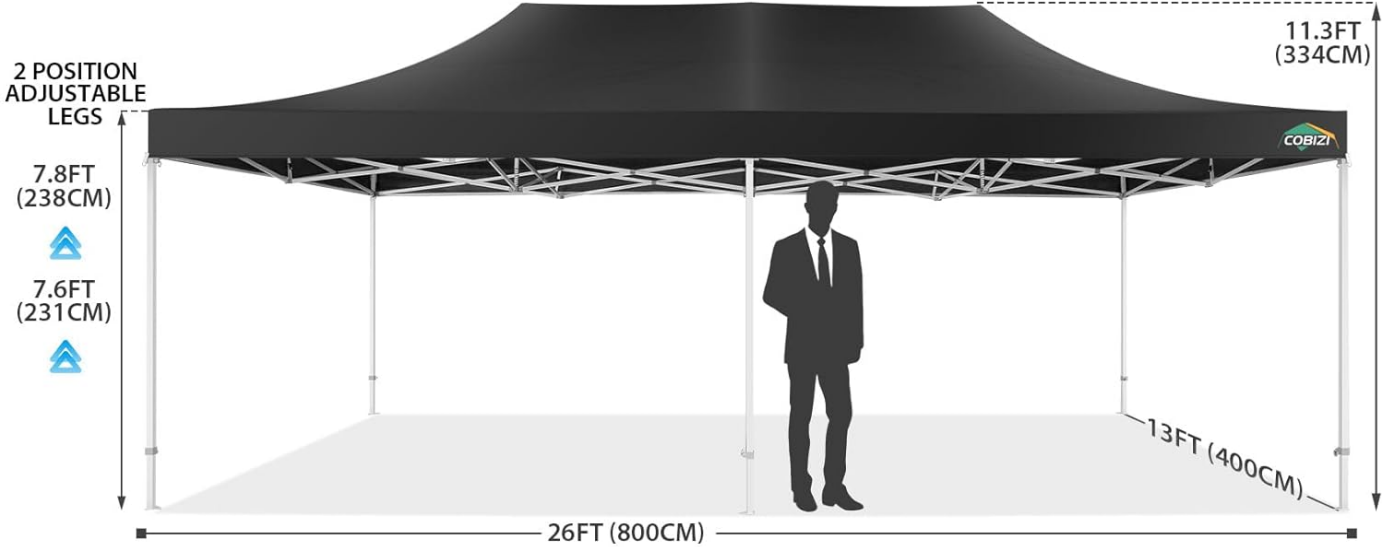
Image 8: The tent's ability to withstand different weather types.

8. SPECIFICATIONS

Brand	COBIZI
Model Number	main_canopy
Color	Black
Material	Folded Upgraded Heavy Duty Frame (Alloy Steel)
Item Weight	142 Pounds
Product Dimensions	314.96"L x 157.48"W x 131.5"H (13x26 feet)
Floor Area	344.5 Square Feet
Ultraviolet Light Protection	UPF 50+
Water Resistance Level	Waterproof (PU1500MM)
Recommended Uses	Family Gathering, Outdoor Activities, Party, Wedding, Exhibition

13X26FT

POP UP CANOPY



Easy Setup



UPF 50+



Windproof



Waterproof

Image 9: Dimensional specifications of the 13x26FT Pop Up Canopy.

OTHER CANOPY



OUR CANOPY



Image 10: Size comparison illustrating the larger dimension of the 13x26 tent.

9. WARRANTY AND SUPPORT

COBIZI is committed to providing high-quality products and excellent customer service. Our products are rigorously tested for durability.

- **Customer Service:** If you have any questions or encounter issues during the purchase or use of your COBIZI tent, our professional service team is available to assist you. We aim to reply within 24 hours.
- **Contact:** For support, please refer to the contact information provided on the COBIZI official store page or your purchase platform.

For more information about COBIZI products, visit the [COBIZI Store](#).

