

[Manuals.plus](#) /

› [REOLINK](#) /

› REOLINK WiFi 6 Camera and NVR System User Manual

## REOLINK 810WA

# REOLINK WiFi 6 Camera and NVR System User Manual

Models: RLC-810WA Cameras & RLN12W NVR

## 1. PRODUCT OVERVIEW

---

This manual provides detailed instructions for setting up, operating, and maintaining your REOLINK WiFi 6 Camera and NVR System. The bundle includes two RLC-810WA WiFi 6 cameras and one RLN12W Network Video Recorder with a pre-installed 2TB Hard Disk Drive (HDD).



Image: The complete REOLINK WiFi 6 Camera and NVR system, showing two RLC-810WA cameras and the RLN12W NVR unit with a 2TB HDD.

## 1.1 What's in the Bundle

- 2 x REOLINK RLC-810WA WiFi 6 Cameras
- 1 x REOLINK RLN12W WiFi NVR (with 2TB HDD Pre-Installed)
- Power Adapters for Cameras and NVR
- Ethernet Cable
- USB Mouse
- Mounting Screws and Template
- Quick Start Guide

## 1.2 Key Features

- **4K Ultra HD Resolution:** Capture crisp and clear video footage with 8-megapixel (3840x2160) resolution.

- **Wi-Fi 6 Connectivity:** Experience enhanced network performance, wider coverage, and lower latency for smoother video streaming.
- **Smart Person/Vehicle/Pet Detection:** Advanced technology accurately identifies humans, vehicles, and pets, reducing false alarms.
- **Color Night Vision & IR Night Vision:** See full-color images at night with the integrated spotlight, or switch to infrared (IR) night vision for discreet monitoring up to 30 meters.
- **24/7 Continuous Recording:** The pre-installed 2TB HDD allows for continuous recording from all connected cameras. Storage is expandable up to 16TB.
- **Two-Way Audio:** Communicate directly with visitors or deter intruders through the camera's built-in microphone and speaker.
- **Remote Access:** View live feeds, play back recordings, and manage settings from anywhere using the Reolink App or Client software on your smartphone or computer.

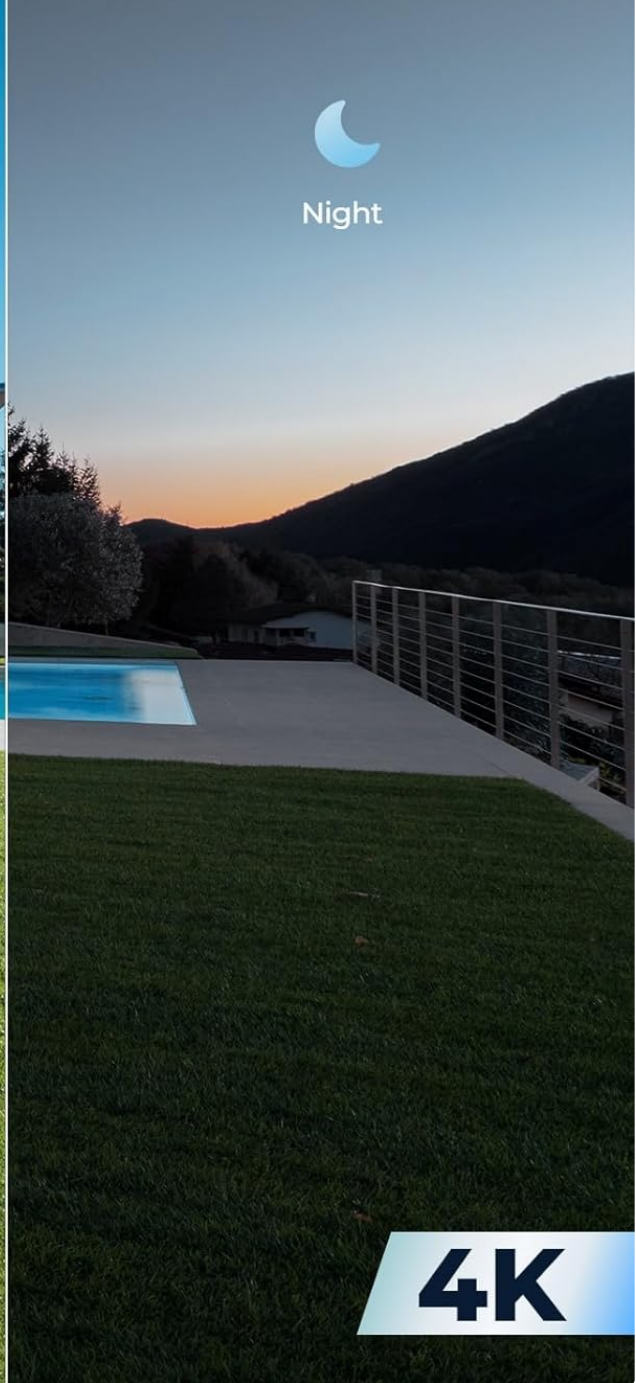
# Crystal Clear Vision in 4K



Day



Night



**4K**

Image: A split view demonstrating the clear 4K video quality during the day and the effective night vision capabilities of the camera.

# Experience Wi-Fi 6 Enhancements



Limitless Coverage



Advanced Cybersecurity



Low Latency

# Wi-Fi 6



Note : The router that supports Wi-Fi 6 is recommended for better performance.

Image: An illustration highlighting the benefits of Wi-Fi 6 technology, including limitless coverage, advanced cybersecurity, and low latency, with a comparison of Wi-Fi 5 and Wi-Fi 6 speeds.



Image: A comparison showing the difference between traditional IR night vision (black and white) and the vivid details provided by color night vision with the camera's spotlight.

## 2. SYSTEM SETUP

### 2.1 NVR (RLN12W) Setup

1. **Connect to Power:** Plug the NVR's power adapter into the NVR and a power outlet.
2. **Connect to Monitor:** Connect the NVR to a monitor or TV using an HDMI or VGA cable (not included) to view the interface.
3. **Connect to Network (Optional but Recommended):** For remote access and firmware updates, connect the NVR to your router using the provided Ethernet cable.
4. **Initial Setup Wizard:** Follow the on-screen instructions to set up the NVR, including creating a password, setting the time zone, and configuring network settings.

### 2.2 Camera (RLC-810WA) Setup

1. **Power On:** Connect the RLC-810WA camera to its power adapter and plug it into a power outlet.
2. **Automatic Pairing:** The cameras are designed to automatically pair with the RLN12W NVR when both are powered on and within range. The NVR will display the camera feeds once connected.
3. **Mounting:** Choose a suitable location for your cameras, ensuring good Wi-Fi signal strength. Use the provided mounting template and screws to securely install the cameras. Adjust the camera angle for

optimal viewing.



Image: A close-up of the RLC-810WA camera's power connection, showing the power adapter plugged into a wall outlet.

## 3. OPERATING THE SYSTEM

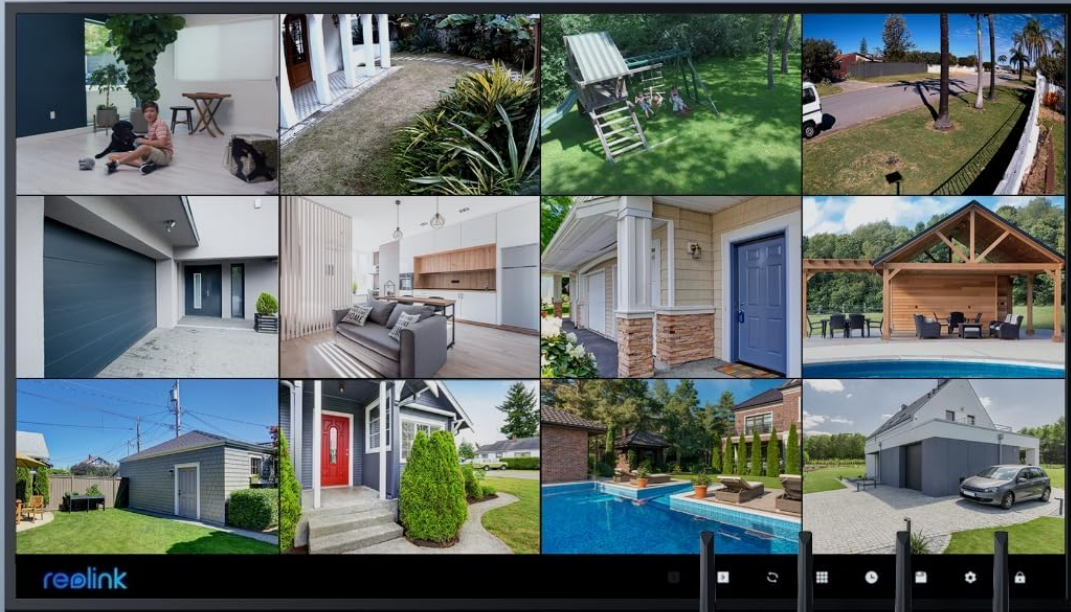
---

### 3.1 Live View and Playback

You can access your camera feeds and recorded footage through the NVR's local interface, the Reolink mobile app, or the Reolink Client software on your computer.

- **NVR Local Interface:** Use the connected monitor and USB mouse to navigate the NVR menu. Select 'Live View' to see real-time feeds or 'Playback' to review recorded videos.
- **Reolink App/Client:** Download the Reolink App from your mobile app store or the Reolink Client from the official website. Add your NVR system by scanning the QR code or manually entering the UID.

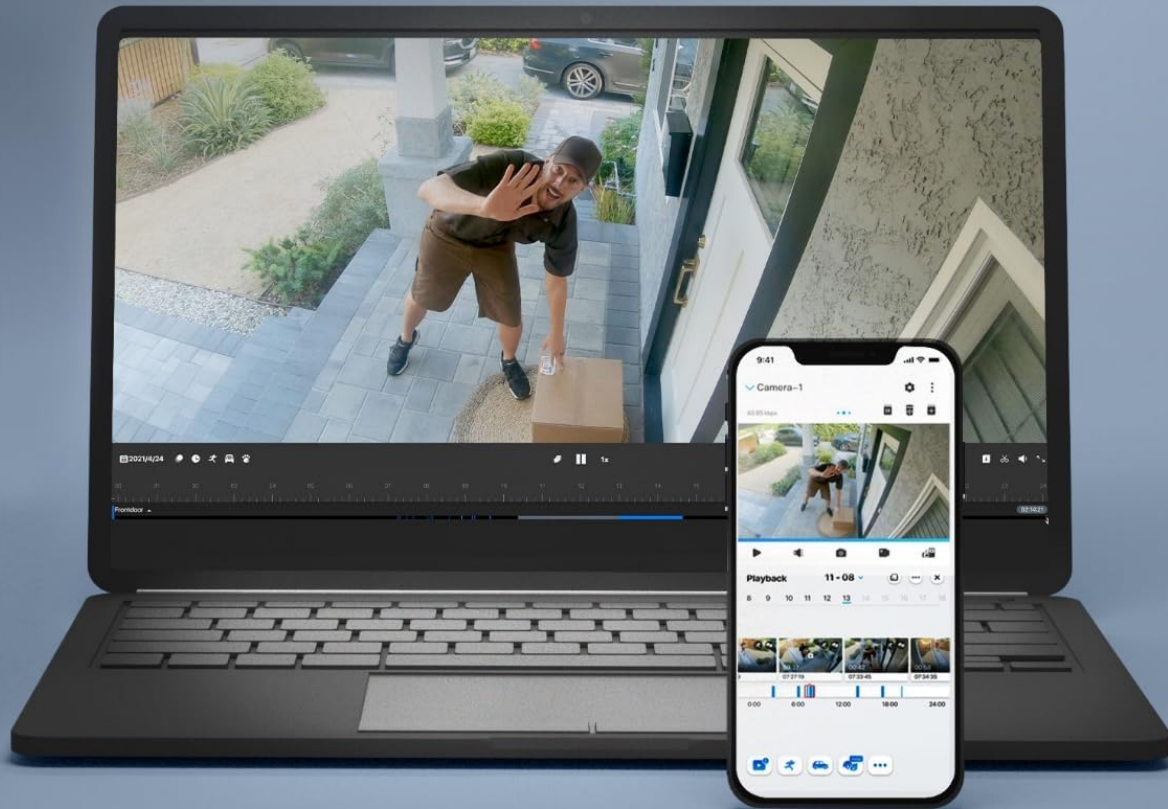
# All-in-One Managing Platform



24/7  
Recording

Image: A monitor displaying multiple camera feeds from the REOLINK system, showcasing the all-in-one management platform of the NVR.

# Access Your Cameras Anywhere & Anytime



**12 Online**  
Streams



**20 User**  
Accounts

Image: A laptop and smartphone displaying the Reolink app interface, illustrating the ability to access camera feeds remotely from various devices.

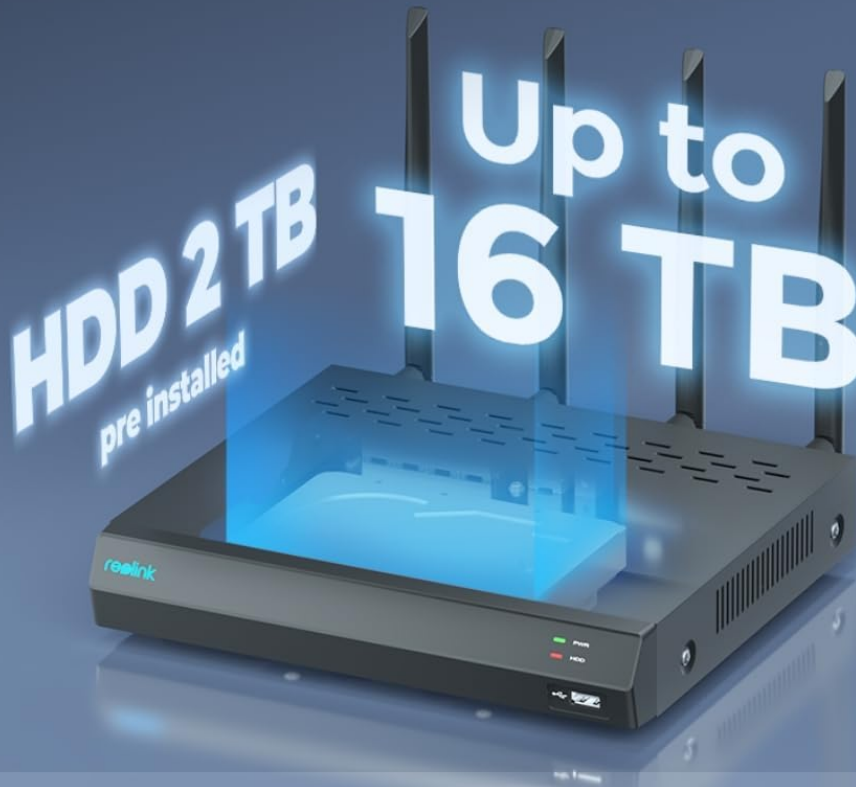
## 3.2 Recording and Storage

The RLN12W NVR comes with a 2TB HDD pre-installed, enabling 24/7 continuous recording. You can configure recording schedules and modes (continuous, motion-triggered) via the NVR's settings.

- **Storage Capacity:** The 2TB HDD provides ample storage for continuous recording. The NVR supports up to 16TB of storage, allowing for significant expansion if needed.
- **Recording Modes:** Choose between 24/7 continuous recording, motion-activated recording, or scheduled recording to optimize storage usage.

# 24/7 Surveillance, Day and Night

Vast Storage Expansion, Up to 16TB



## How Long Can the HDD Record in 24/7\*

Total Recording Channels	One	Four	Eight	Twelve
2TB HDD/Days	48	12	6	4

\*Based on 4096 kbps Bitrate

Image: An illustration of the NVR highlighting its 2TB pre-installed HDD and the capability to expand storage up to 16TB for extended 24/7 surveillance.

### 3.3 Smart Detection and Alerts

The RLC-810WA cameras feature intelligent detection capabilities to distinguish between people, vehicles, and pets, minimizing irrelevant alerts.

- **Detection Types:** Configure the cameras to detect specific objects like humans, vehicles, or pets.
- **Alert Actions:** When an event is detected, the system can trigger various actions, including push notifications to your phone, email alerts, activation of the camera's spotlight, and sounding of the built-in siren.
- **Customizable Motion Zones:** Define specific areas within the camera's view where motion detection

should be active or ignored, reducing false alarms from busy areas.

- **Two-Way Audio:** Use the Reolink App to speak through the camera's speaker and listen through its microphone, enabling direct communication.



Image: A scene showing a child and a dog with detection boxes around them, illustrating the smart person/vehicle/pet detection feature of the camera.

# Alert in an Instant, Deter with Impact



Push



Spotlights



Siren



Reolink

[NOW]

## Camera Alarm

Person is detected from Garage Camera.

Image: A person being detected by the camera at night, with icons indicating push notifications, spotlight activation, and siren sounding as immediate alert and deterrence actions.



Image: An outdoor scene with a pool, showing a highlighted blue area representing a customizable motion detection zone, allowing users to define specific areas for alerts.

## 4. MAINTENANCE

### 4.1 Hard Disk Drive (HDD) Management

- **Check HDD Status:** Regularly check the HDD status in the NVR settings to ensure it is functioning correctly.
- **Format HDD:** If you encounter recording issues or wish to erase all data, you can format the HDD through the NVR's system settings. *Note: Formatting will delete all recorded data.*
- **Upgrade HDD:** If you require more storage, you can replace the existing 2TB HDD with a larger compatible HDD (up to 16TB). Refer to the NVR's detailed manual for specific instructions on HDD replacement.

### 4.2 Firmware Updates

Keeping your NVR and cameras updated with the latest firmware ensures optimal performance, new features, and security enhancements.

- **Check for Updates:** You can check for firmware updates via the NVR's system settings or through the Reolink App/Client.
- **Update Process:** Follow the on-screen instructions carefully during the update process. Ensure stable power supply during updates to prevent system damage.

### 4.3 Cleaning and Care

- **Camera Lens:** Gently clean the camera lens with a soft, dry cloth to remove dust or smudges that may affect image quality. Avoid abrasive cleaners.
- **Camera Housing:** Wipe the camera housing with a damp cloth if necessary. Ensure no moisture enters the camera.
- **NVR Unit:** Keep the NVR unit in a well-ventilated area, free from dust and direct sunlight. Clean the exterior with a soft, dry cloth.

## 5. TROUBLESHOOTING

---

### 5.1 No Image on Monitor

- Ensure the NVR is powered on and the power adapter is securely connected.
- Check the HDMI/VGA cable connection between the NVR and the monitor.
- Verify the monitor is powered on and set to the correct input source.

### 5.2 Cameras Not Connecting to NVR

- Ensure both the cameras and the NVR are powered on.
- Check if the cameras are within the Wi-Fi range of the NVR. Obstacles like thick walls can reduce signal strength.
- If cameras were previously connected to another system or Wi-Fi, they might need to be reset and re-added to the NVR. Refer to the camera's specific manual for reset procedures.

### 5.3 No Recording

- Check the HDD status in the NVR settings. Ensure it is detected and healthy.
- Verify that recording schedules are properly configured for your cameras.
- Ensure there is sufficient free space on the HDD. If full, the NVR should overwrite older footage, but check settings.

### 5.4 Remote Access Issues

- Ensure the NVR is connected to the internet via an Ethernet cable.
- Check your router's internet connection.
- Verify that the UID (Unique ID) of the NVR is correctly entered in the Reolink App/Client.
- Ensure your mobile device or computer has a stable internet connection.

## 6. SPECIFICATIONS

---

### 6.1 RLC-810WA Camera Specifications

Feature	Specification
Video Capture Resolution	4K (3840 x 2160)
Frame Rate	20-30 FPS
Low Light Technology	Night Color

Feature	Specification
Connectivity Technology	Wireless (Wi-Fi 6)
Special Features	Night Vision, Wireless, Smart Detection (Person/Vehicle/Pet), Spotlight, Siren, Two-Way Audio
Power Source	Corded Electric
Model Number	810WA

## 6.2 RLN12W NVR Specifications

Feature	Specification
Number of Channels	16
Pre-installed HDD	2TB
Max. HDD Capacity	16TB
Compatible Devices	REOLINK Cameras
Connectivity	Ethernet, Wi-Fi (for camera connection)

## 7. SUPPORT

For further assistance, technical support, or warranty inquiries, please visit the official REOLINK website or contact their customer support team. You can find detailed FAQs, troubleshooting guides, and contact information on their support page.

**REOLINK Official Website:** [reolink.com](https://reolink.com)