

THR-BLADE

Generic Throwerblade Snowplow Kit

MODEL: THR-BLADE USER MANUAL

1. Introduction

The Generic Throwerblade Snowplow Kit is designed to convert your 2-stage or 3-stage snowblower into an efficient snowplow. This attachment is compatible with snowblowers ranging from 22 to 32 inches in width, enabling quick and effective snow, slush, and ice removal from various surfaces.



NOTE: We are selling only blade with Attachments, BLOWER is not Included.

Image: The Throwerblade transforms your snowblower into a personal snow-plow.



Easy to Install. Package comes with all hardware.

Image: Important note: Only the blade and attachments are included; the snowblower is sold separately.

2. Safety Information

WARNING: This snowplow attachment is compatible with gas and electric-powered 2 and 3 stage snow blowers. Using snow blowers can pose potential hazards such as injury from rotating parts and carbon monoxide poisoning from gasoline models. Always wear protective equipment like gloves and eye protection while operating and maintaining the snow blower. Follow the manufacturer's instructions for safe handling and storage of the snow blower and its fuel.

To ensure safe operation and prevent injury or damage, please observe the following guidelines:

- Read and understand all instructions in this manual and your snowblower's manual before assembly or operation.
- Always wear appropriate personal protective equipment, including safety glasses, gloves, and sturdy footwear.
- Ensure the snowblower engine is off and cooled before performing any installation, adjustment, or maintenance.
- Keep hands, feet, and clothing away from moving parts.
- Do not allow children or untrained individuals to operate the snowplow kit or snowblower.

- Inspect the snowplow kit and snowblower for any damage or loose parts before each use.

3. Package Contents

Verify that all components are present in your package:

- Snowplow Blade
- Mounting Brackets (Left and Right)
- Connecting Arms
- Hardware Kit (bolts, nuts, washers, pins)

4. Setup and Installation

The Throwerblade Snowplow Kit is designed for quick and efficient installation on compatible snowblowers. All necessary hardware is included.

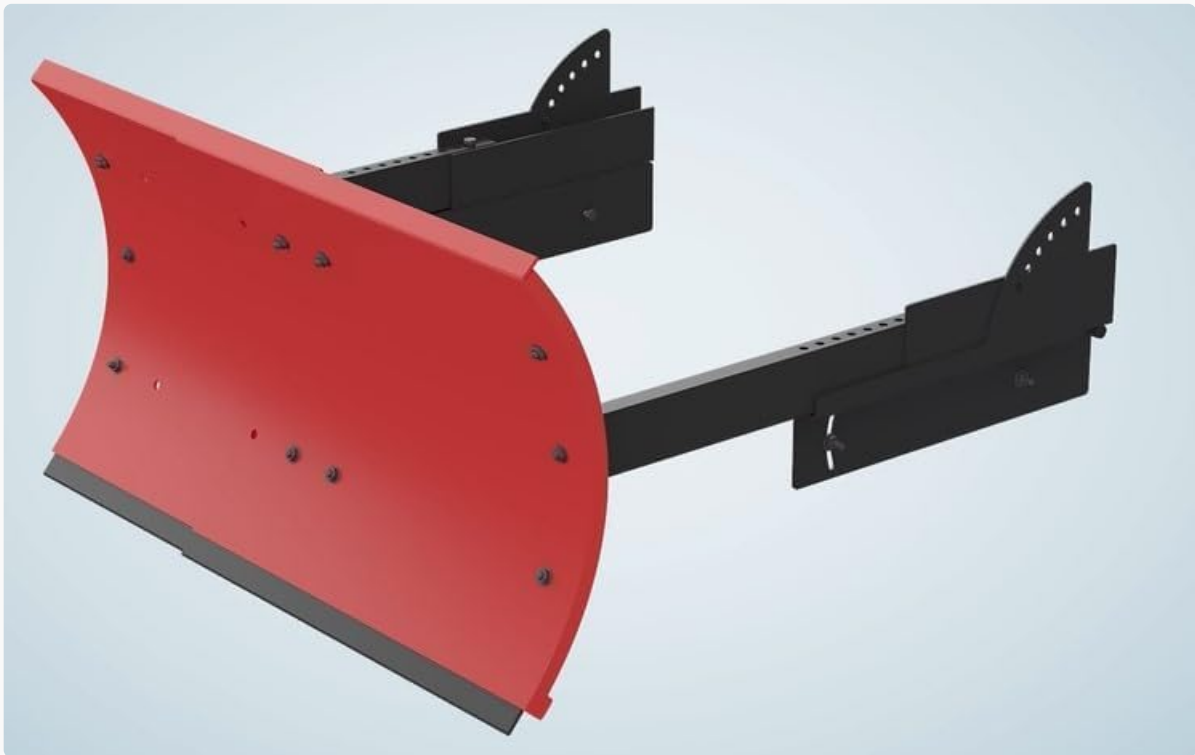


Image: Easy installation with all hardware included.

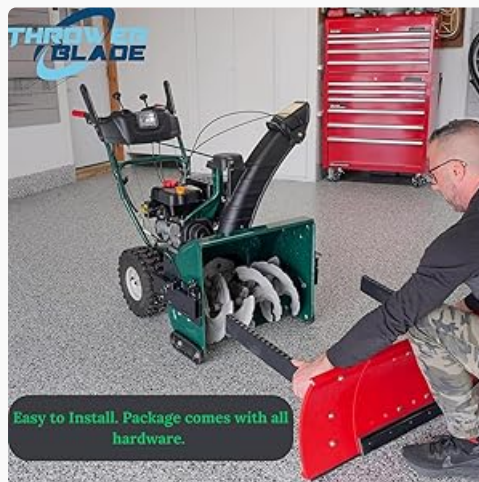


Image: Attaching the snowplow blade to the snowblower.

Installation Steps:

1. **Prepare Snowblower:** Ensure your snowblower is turned off, spark plug wire is disconnected, and the engine is cool. Clear any snow or debris from the auger housing area.
2. **Attach Auger Brackets:** Secure the provided auger brackets to the sides of your snowblower's auger housing using the supplied hardware. These brackets are designed to fit universally on 22-32 inch models.
Note: Some snowblower models, especially older ones, may require additional spacers or longer bolts if the auger shaft protrudes significantly. Measure carefully to ensure a secure and flush fit. A common measurement for drilling holes is approximately 7.5 inches from the ground, but always verify against your specific snowblower's design.
3. **Connect Plow Blade:** Attach the snowplow blade to the connecting arms, then secure the connecting arms to the auger brackets. Ensure all bolts are tightened securely.
4. **Adjust Blade Width:** The blade is adjustable to fit snowblowers with widths ranging from 22 to 32 inches. Customize the blade width to match your snowblower for optimal performance.
5. **Verify Movement:** Test the blade's ability to lock up and down, and angle left and right using the Angle Lock Pins and Lift Lock Pins. Ensure smooth movement and secure locking in desired positions.

5. Operating Instructions

Once installed, the Throwerblade allows for efficient snow removal. Familiarize yourself with its functions before operating.



Image: The Throwerblade in action, plowing through snow.

Using the Snowplow:

- **Engage Blade:** Lower the blade to the plowing position using the Lift Lock Pins.
- **Angle Adjustment:** Use the two Angle Lock Pins on either side to set the blade at multiple degrees to the left or right, directing snow away from your path.
- **Plowing Technique:** For optimal results, push snow in straight lines. Overlapping passes will ensure complete coverage. Adjust your speed based on snow depth and density.
- **Heavy Snow:** In very deep or heavy snow, it may be necessary to make multiple passes or use the

snowblower's auger function in conjunction with the blade.

- **Lifting Blade:** When not actively plowing or for transport, lift and lock the blade out of the way using the Lift Lock Pins.

6. Maintenance

Regular maintenance ensures the longevity and optimal performance of your Throwerblade Snowplow Kit.



Image: The Throwerblade can be conveniently disconnected and folded for easy storage.

Care and Storage:

- **Cleaning:** After each use, clean the blade and all components to remove snow, ice, and salt residue. Use a damp cloth and mild detergent if necessary.
- **Inspection:** Periodically inspect all bolts, nuts, and pins for tightness. Tighten any loose fasteners. Check the blade for wear or damage.
- **Lubrication:** Apply a light coat of lubricant to moving parts and pivot points to ensure smooth operation and prevent rust.
- **Storage:** When not in use, especially during off-season, disconnect the Throwerblade from the snowblower. The design allows it to fold away for compact storage in a dry, protected area.
- **Rust Prevention:** The Throwerblade features powder-coated steel construction. If any scratches or chips occur, touch up with rust-inhibiting paint to prevent corrosion.

7. Troubleshooting

Refer to the table below for common issues and their potential solutions.

Problem	Possible Cause	Solution
Blade does not clear snow effectively.	Incorrect blade height; too much snow for a single pass; incorrect angle.	Adjust blade height to ensure proper ground clearance. Make multiple, shallower passes. Adjust blade angle to direct snow efficiently.
Difficulty installing brackets on snowblower.	Auger shaft protrusion; incompatible bolt size.	Use appropriate spacers and/or longer bolts if the snowblower's auger shaft interferes with bracket placement. Ensure correct measurement for drilling holes.
Blade feels loose or wobbly.	Loose fasteners; incorrect assembly.	Check and tighten all bolts, nuts, and pins. Review installation steps to ensure correct assembly.
Blade does not lock securely in position.	Pins not fully engaged; obstruction.	Ensure Angle Lock Pins and Lift Lock Pins are fully inserted and engaged. Clear any debris preventing full engagement.
Missing parts upon delivery.	Packaging error.	Contact customer support immediately with your purchase details to request replacement parts.

8. Specifications

Feature	Detail
Brand	Generic
Model Number	THR-BLADE
Compatibility	22-32 inch 2-Stage and 3-Stage Snowblowers (Gas or Electric)
Material	Powder-coated Steel
Item Weight	38 Pounds
Product Dimensions	31.5 x 5 x 15.75 inches
Color	Red
UPC	195893096268

9. Warranty Information

This product is manufactured to high-quality standards. For specific warranty details, including coverage period and terms, please refer to the documentation included with your purchase or contact the seller directly. Keep your proof of purchase for any warranty claims.

10. Customer Support

If you have any questions regarding the installation, operation, maintenance, or troubleshooting of your Throwerblade Snowplow Kit, please contact our customer support team. Provide your model number (THR-BLADE) and purchase date for faster assistance.

For support, please refer to the contact information provided by your retailer or on the product packaging.

© 2023 Generic. All rights reserved.