

## KENRONE KR-PL53555

# KENRONE Fingerprint Padlock Instruction Manual

Model: KR-PL53555

## INTRODUCTION

---

The KENRONE Fingerprint Padlock offers a secure and convenient locking solution using biometric technology. This manual provides comprehensive instructions for setting up, operating, and maintaining your padlock. Please read this manual thoroughly before first use to ensure proper functionality and security.

## PRODUCT OVERVIEW

---

The KENRONE Fingerprint Padlock is designed for durability and ease of use, featuring a zinc alloy body and IP66 waterproof rating. It supports up to 50 fingerprints and offers quick unlocking in approximately 0.5 seconds.

### Key Features:

- **Fingerprint Unlock:** Your finger serves as the key, eliminating the need for passwords or physical keys.
- **High Capacity:** Stores up to 50 unique fingerprints, allowing multiple users access.
- **Long Battery Life & Rechargeable:** Equipped with a 250mAh lithium battery, providing extended use. Rechargeable via USB-C port.
- **Sturdy and Durable:** Constructed from zinc alloy with good cut resistance and a rustproof coating.
- **Waterproof:** IP66 rated, suitable for outdoor and wet environments.
- **Versatile Use:** Ideal for lockers, cabinets, toolboxes, luggage, bicycles, and various other applications.

### Product Components:

# Products Contained



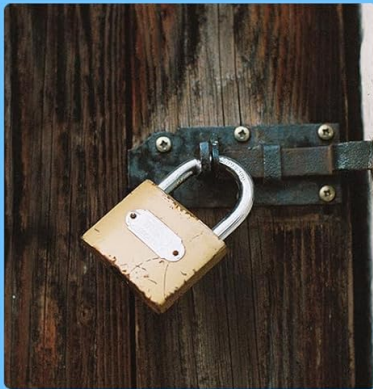
Image: The KENRONE Fingerprint Padlock, USB charging cable, and instruction manual are included in the package.

The package includes the KENRONE Fingerprint Padlock, a USB charging cable, and this instruction manual.

## Visual Overview:

# Smart Fingerprint Padlock

Unlock in just  
**0.5S**



**Forget password**



**Forget key**



**Lost keys**

Image: The KENRONE Fingerprint Padlock, highlighting its compact design and fingerprint sensor.

This image provides a detailed view of the padlock, emphasizing its fingerprint sensor for quick access.

# Fingerprint Padlock

Fingerprint padlock are faster and easier to unlock than combination padlock



Fingerprint

vs

Combination



Image: A visual comparison illustrating the speed and convenience of fingerprint unlocking versus a traditional combination lock.

The fingerprint padlock offers a faster and more convenient unlocking method compared to traditional combination padlocks.



Image: The padlock securing a file cabinet, demonstrating one of its many applications.

The padlock can be used for various items, including file cabinets, bicycles, and gym lockers.

## SETUP

Before initial use, it is recommended to register at least one administrator fingerprint. Any blank fingerprint can open the lock before registration. For security, register an admin fingerprint immediately.

### Admin Fingerprint Registration:

1. Use one blank fingerprint to open the lock. After opening, keep your finger on the sensor until the blue light flashes (approximately 3 seconds).
2. Collect one blank fingerprint for 6 continuous times. The green light will turn on, indicating successful registration of the first admin fingerprint.
3. After the light turns off, use the first admin fingerprint to open the lock. Do not remove your finger after opening until the blue light flashes.
4. Collect another blank fingerprint for 6 continuous times. The green light will turn off, indicating successful registration of the second admin fingerprint.

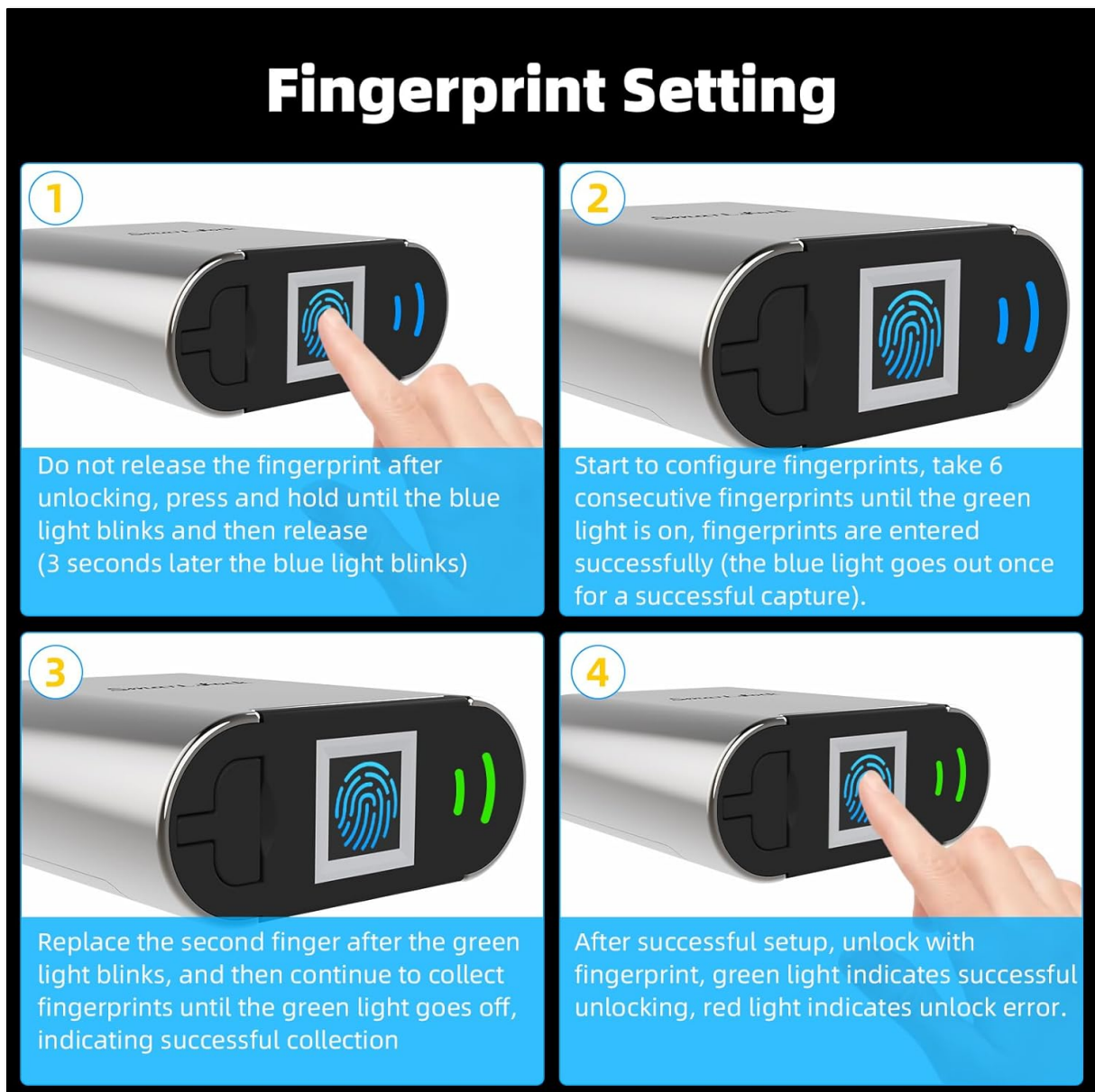


Image: Step-by-step guide for registering fingerprints on the padlock. Ensure to follow the light indicators for successful registration.

Refer to the image above for a visual representation of the fingerprint registration process. The blue light indicates readiness for input, and the green light confirms successful capture.

### **User Fingerprint Registration:**

1. Use one of the registered admin fingerprints to open the lock. After opening, keep your finger on the sensor until the blue light flashes.
2. Collect one blank fingerprint for 6 continuous times. The green light will turn on, indicating successful registration of the user fingerprint.

Up to 50 fingerprints can be registered in total, including admin and user fingerprints.

### **Video Guide: Fingerprint Setup**

Your browser does not support the video tag.

Video: This video demonstrates the process of setting up and registering fingerprints on the KENRONE Fingerprint Padlock, including admin and user fingerprint registration, and factory reset procedures.

Watch the video above for a visual demonstration of the fingerprint registration process, including how to add admin and user fingerprints.

## **OPERATING INSTRUCTIONS**

---

### **Unlocking the Padlock:**

To unlock, simply place a registered fingerprint on the sensor. The lock will open in approximately 0.5 seconds if the fingerprint is recognized.

### **Charging the Padlock:**

The padlock has a built-in 250mAh lithium battery. When the battery is low, a red light will flash to indicate that charging is required. To charge, connect the padlock to a USB power source using the provided USB charging cable. The charging port is located on the side of the padlock.

## Long battery life & USB charging



300mAh lithium battery



USB port charging



Image: The padlock being charged via its USB port, illustrating the charging process.

The padlock can be recharged using a standard USB power adapter or a power bank. A full charge ensures long-lasting operation.

## MAINTENANCE

To ensure the longevity and optimal performance of your KENRONE Fingerprint Padlock, follow these maintenance guidelines:

- **Cleaning:** Wipe the padlock body and fingerprint sensor with a soft, dry cloth. Avoid using abrasive cleaners or solvents.
- **Water Resistance:** The padlock is IP66 waterproof, meaning it is protected against powerful water jets. While it can withstand rain and splashes, avoid prolonged submersion.
- **Durability:** The zinc alloy construction provides resistance against cutting and impact. However, avoid excessive force or intentional damage.
- **Charging:** Recharge the battery when the low battery indicator flashes to prevent complete power loss.

## Sturdy and Durable



### Iron Nickel Plating



Preventing Cutting

### Zinc Alloy Body



Anti Violent Unlocking

### Rustproof Coating



Rust Prevention

Image: An illustration highlighting the robust construction of the padlock, including its iron nickel plating, zinc alloy body, and rustproof coating for enhanced durability.

The padlock's design incorporates features like iron nickel plating and a rustproof coating to ensure long-term performance in various conditions.

## TROUBLESHOOTING

### Padlock Not Unlocking:

- Ensure your finger is clean and dry when placing it on the sensor.
- Verify that the fingerprint you are using is registered.
- Check the battery level. If the red light flashes, the battery is low and needs charging.

### Electronic Key for Reset and Emergency Open:

In situations where fingerprints cannot be used (e.g., damaged sensor, completely dead battery), an electronic key can be used for emergency unlocking or to reset the lock.

# Electronic Key Unlock

1. Unlocking when fingerprints can not be used due to special circumstances
2. Can unlock or clear fingerprint when the fingerprint sensor is damaged;
3. It can be unlocked when the lock body is completely out of battery.



**Note: Neither the fingerprint padlock nor the emergency key requires batteries.**

Image: The electronic key being inserted into the Type-C port for emergency access or reset. This method is crucial if the fingerprint sensor is damaged or the battery is fully depleted.

Make sure the electronic key has power. Insert the electronic key into the Type-C port on the lock until the green light on the key turns on. The lock will then be reset, and any fingerprint can open it. This also serves as an emergency open function.

## Factory Reset:

To perform a factory reset and delete all registered fingerprints:

1. Use one of the admin fingerprints to open the lock. After opening, do not remove your finger and hold for 10 seconds until the red light flashes.
2. Input one of the admin fingerprints again. The green light will turn on, indicating that the factory reset is successful and all fingerprints have been deleted.

After a factory reset, the lock returns to its initial state where any blank fingerprint can open it. You will need to re-register admin fingerprints.

## Video Guide: Deleting Fingerprints and Factory Reset

Your browser does not support the video tag.

Video: This video also covers the process of deleting user fingerprints and performing a factory reset on the KENRONE

## Fingerprint Padlock.

The provided video guide demonstrates how to delete individual user fingerprints and how to perform a complete factory reset, which removes all registered fingerprints.

## SPECIFICATIONS

---

Feature	Detail
Brand	KENRONE
Model Name	Fingerprint padlock (KR-PL53555)
Material	Zinc Alloy
Color	Silver
Special Feature	Fingerprint Unlock
Lock Type	Fingerprint Padlock
Item Dimensions (L x W x H)	2.1 x 0.83 x 3.5 inches
Item Weight	8.8 ounces (0.25 Kilograms)
Waterproof Rating	IP66
Battery	250mAh Lithium Ion (included)
Charging Port	USB-C
Fingerprint Capacity	Up to 50
Unlock Speed	Approximately 0.5 seconds

## WARRANTY AND SUPPORT

---

KENRONE offers a 30-day return and replacement policy for any quality problems. For further assistance or inquiries regarding your fingerprint padlock, please contact KENRONE customer support. We are committed to providing timely solutions to any questions you may have.

For support, please refer to the contact information provided with your purchase or visit the official KENRONE website.