

Docooler e902fd28-958a-4f5c-a297-33c398b2a418

Docooler Smart Biometric Fingerprint Cabinet Lock User Manual

Model: e902fd28-958a-4f5c-a297-33c398b2a418

1. INTRODUCTION

Thank you for choosing the Docooler Smart Biometric Fingerprint Cabinet Lock. This device provides a secure and convenient keyless access solution for your cabinets, drawers, wardrobes, and other furniture. Utilizing advanced fingerprint recognition and Bluetooth app control, it offers enhanced security and ease of use. Please read this manual thoroughly before installation and operation to ensure proper functionality and safety.

2. PRODUCT OVERVIEW AND FEATURES

The Docooler Smart Biometric Fingerprint Cabinet Lock integrates modern technology to protect your personal items and documents. Its compact design allows for discreet installation within various furniture types.

Key Features:

- **Multiple Unlock Methods:** Access your belongings using fingerprint recognition, Bluetooth app control, or emergency USB key.
- **High Security:** Advanced biometric technology ensures only authorized fingerprints can unlock the device.
- **Bluetooth App Control:** Connect via Bluetooth to manage fingerprints, view unlock records, and monitor battery status directly from your smartphone.
- **Quick Unlock:** Features a 0.5-second reaction time for rapid access.
- **Automatic Locking:** The lock automatically secures itself after closing, preventing accidental oversight.
- **Low Power Warning:** An indicator light signals when the battery level is low, prompting replacement.
- **Emergency Power Supply:** In case of complete battery depletion, the lock can be temporarily powered via a USB connection for emergency unlocking.

- **Wide Application:** Suitable for various wooden furniture including cabinets, drawers, wardrobes, and storage boxes.



Figure 2.1: Overview of Docooler Smart Electronic Cabinet Lock features.



Figure 2.2: Docoooler Smart Biometric Fingerprint Cabinet Lock components and usage scenarios.

3. PACKAGE CONTENTS

Please verify that all items listed below are included in your package:

- Front Panel (Fingerprint Panel)
- Lock Box
- User Manual (This document)
- Screws Bag
- Lock Catch

PACKING LIST

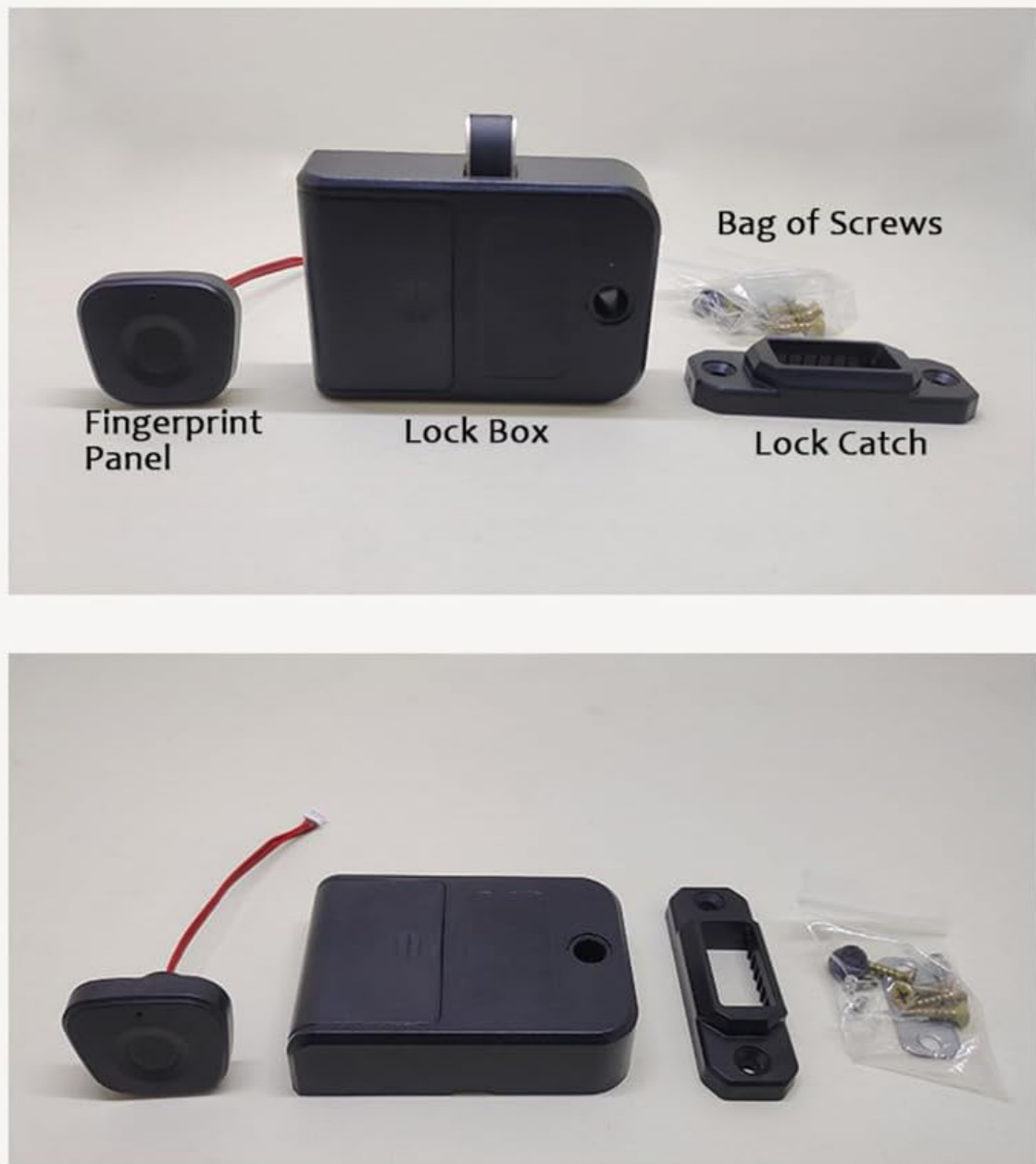


Figure 3.1: Package contents of the Docooler Smart Biometric Fingerprint Cabinet Lock.

4. SPECIFICATIONS

Feature	Description
Brand	Docooler
Special Feature	Fingerprint
Lock Type	Biometric
Material	Acrylonitrile Butadiene Styrene, Stainless Steel
Recommended Uses	Cabinets, Drawers, Wardrobes, Storage Boxes, Furniture

Style	Modern
Color	Black
Controller Type	Application
Control Method	App, Touch
Connectivity Protocol	Bluetooth
Item Weight	4.2 ounces
Package Dimensions	4.45 x 3.78 x 2.56 inches

PRODUCT PARAMETERS

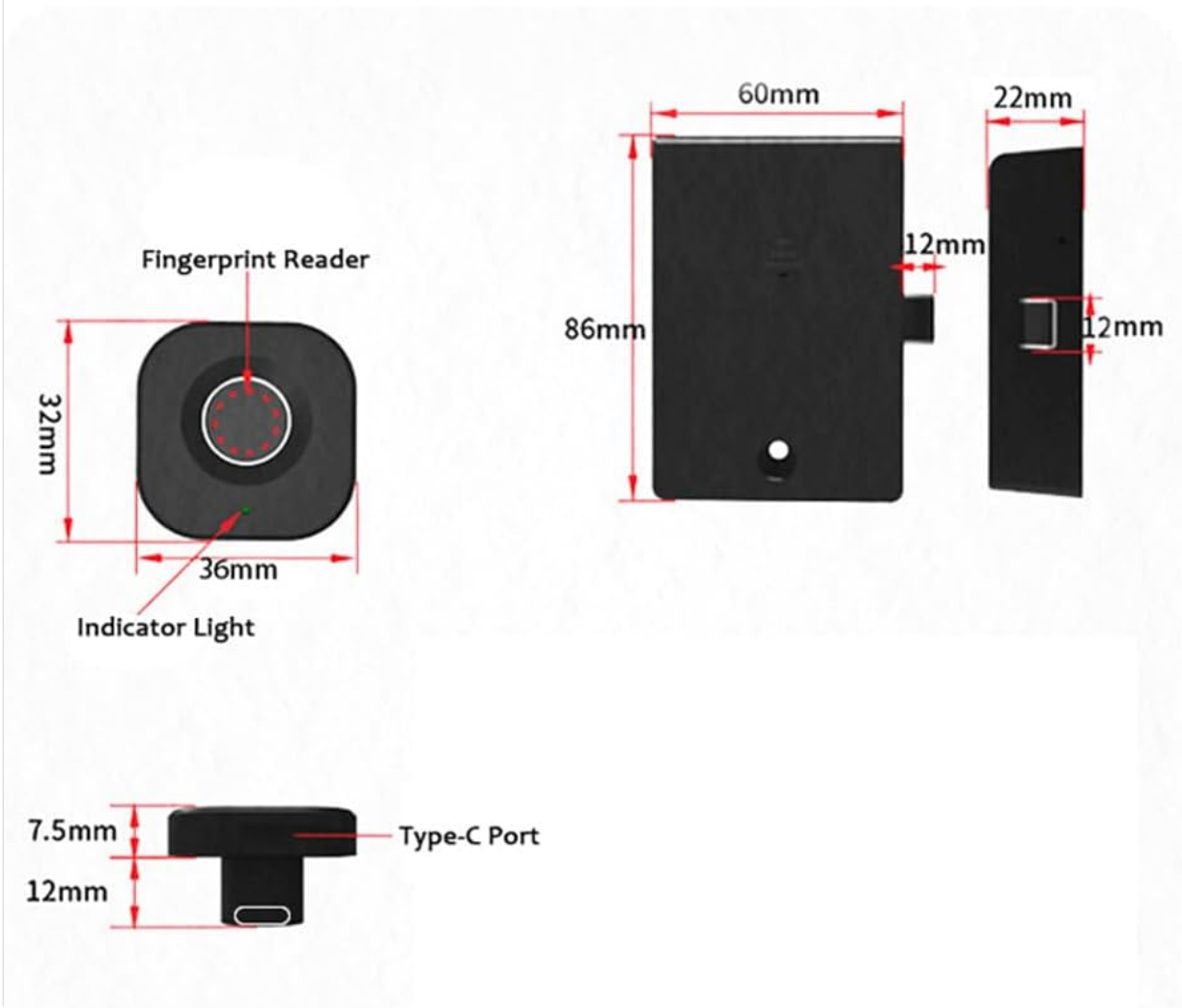


Figure 4.1: Product dimensions and parameters.

5. INSTALLATION

The Docooler Smart Biometric Fingerprint Cabinet Lock is designed for easy installation on various wooden furniture. A screwdriver is typically the only tool required.

Installation Steps:

1. **Prepare the Surface:** Ensure the installation surface on your cabinet or drawer is clean and dry.
2. **Position the Fingerprint Panel:** Determine the desired location for the fingerprint panel on the exterior of your furniture. Mark the screw holes and the cable entry point.
3. **Install the Fingerprint Panel:** Secure the fingerprint panel using the provided screws. Route the connecting wires through the pre-drilled hole to the interior of the furniture.
4. **Mount the Lock Box:** On the interior of the furniture, align the lock box with the fingerprint panel's wires. Secure the lock box with screws.
5. **Attach the Lock Catch:** Install the lock catch on the frame of the furniture, ensuring it aligns properly with the lock box mechanism when the door/drawer is closed.
6. **Connect Wires:** Connect the fingerprint panel wires to the lock box.
7. **Install Batteries:** Open the battery cover on the lock box and insert 3 AAA batteries (not included), observing correct polarity.
8. **Test Functionality:** Close the door/drawer and test the lock's operation.

Figure 5.1: Simple installation process diagram.



Figure 5.2: Installation examples for drawers and single-door cabinets.



Figure 5.3: Internal lock box placement within a drawer.

6. SETUP

6.1. Initial Setup and Administrator Fingerprint Enrollment

1. After installing the batteries, the lock will be in initial setup mode.
2. Place your finger on the fingerprint sensor. The indicator light will flash.
3. Lift and place your finger repeatedly (typically 5-8 times) until the indicator light turns solid green, indicating successful enrollment of the administrator fingerprint.
4. The first enrolled fingerprint will automatically be designated as the administrator.

6.2. Adding User Fingerprints

1. Use the administrator fingerprint to unlock the device.
2. While the lock is open, place the administrator finger on the sensor and hold it until the indicator light flashes blue.
3. Then, have the new user place their finger on the sensor repeatedly until the light turns solid green.
4. Repeat for additional user fingerprints. The lock can store up to 20 fingerprints.

6.3. Bluetooth App Connection and Control

The lock supports control via a dedicated mobile application (e.g., Tuya Smart app).

1. **Download the App:** Search for and download the recommended smart home app (e.g., Tuya Smart) from your device's app store.
2. **Register/Log In:** Create an account or log in to the app.
3. **Add Device:** Ensure your phone's Bluetooth is enabled. In the app, select 'Add Device' or the '+' icon. The app should automatically detect the lock. If not, you may need to manually select 'Lock' or 'Security Sensor' and follow the in-app instructions.
4. **Pairing:** Follow the app's prompts to pair your lock. This may involve pressing a button on the lock or performing an action with the administrator fingerprint.
5. **App Functions:** Once connected, you can use the app to:
 - Unlock the cabinet remotely.
 - Add or delete fingerprints.
 - View unlock records (who unlocked and when).

- Monitor the current battery level.

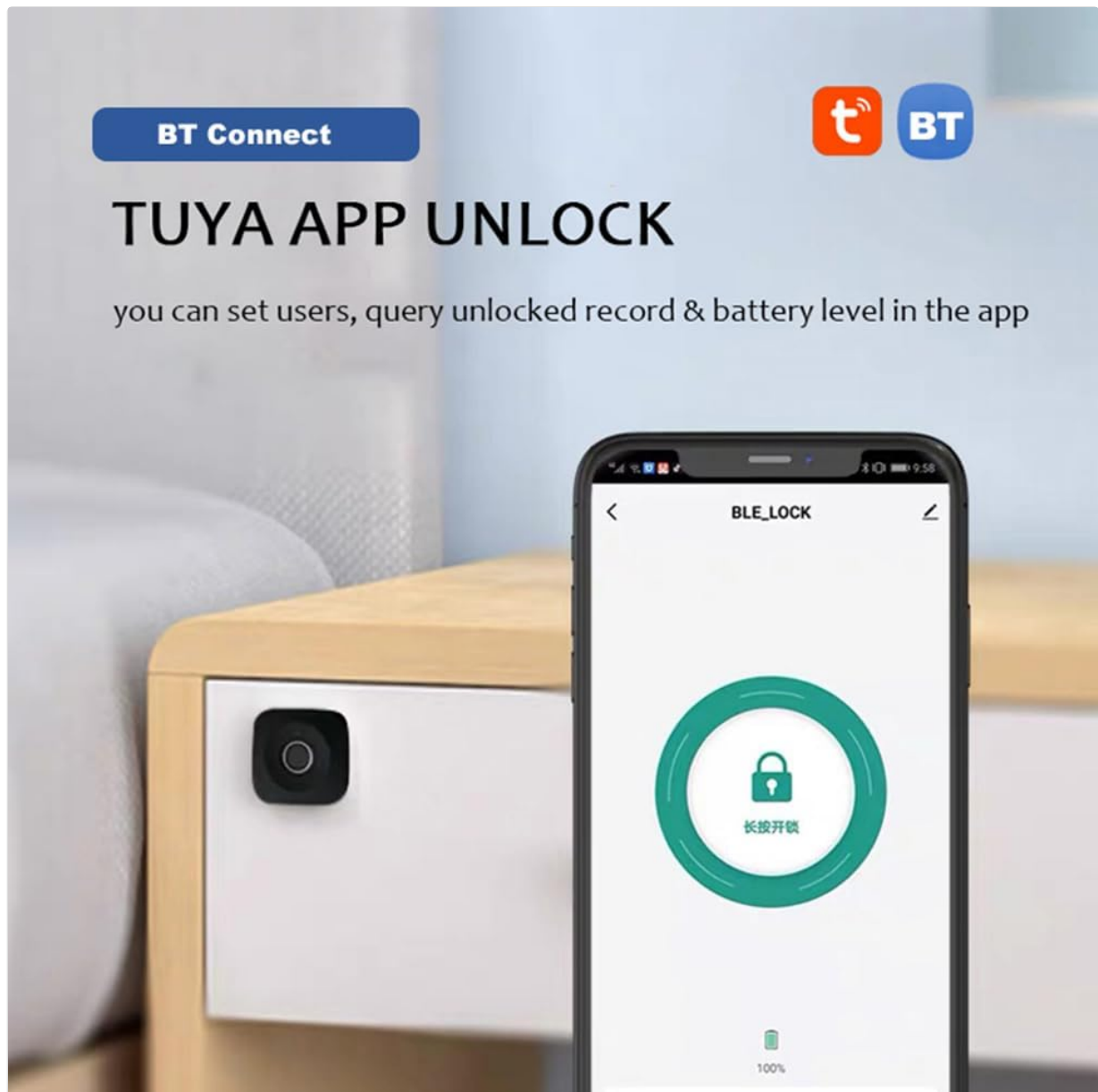


Figure 6.1: Tuya App interface for lock control.

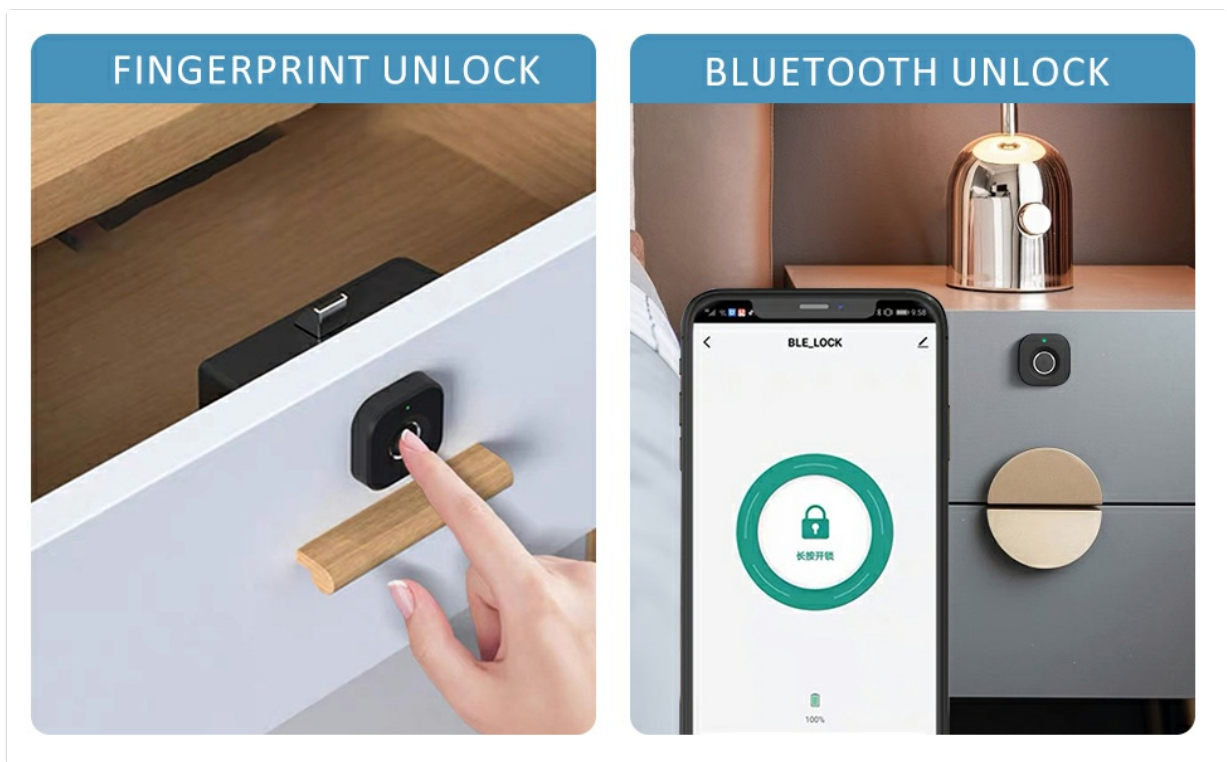


Figure 6.2: Fingerprint and Bluetooth app unlock methods.

7. OPERATION

7.1. Unlocking with Fingerprint

Place your enrolled finger on the fingerprint sensor. The indicator light will flash green, and the lock will disengage, allowing you to open the cabinet or drawer. The lock will automatically re-engage when the door/drawer is closed.

Advanced Fingerprint Technology

Unlock is just a touch



Figure 7.1: Unlocking the cabinet with a registered fingerprint.

7.2. Unlocking with Bluetooth App

Open the connected mobile app on your smartphone. Tap the unlock icon within the app interface. The lock will disengage, and you can open the cabinet or drawer.

7.3. Automatic Locking

After successfully unlocking and opening the cabinet/drawer, the lock mechanism will automatically retract. When you close the cabinet/drawer, the lock will automatically extend and secure the furniture.

8. MAINTENANCE

8.1. Battery Replacement

The lock is powered by 3 AAA batteries (not included). When the battery level is low, the indicator light will flash red 3 times continuously during operation. Replace the batteries promptly to ensure continuous functionality.

1. Locate the battery compartment on the lock box (interior of the furniture).
2. Remove the battery cover.
3. Replace the old AAA batteries with new ones, ensuring correct polarity (+/-).
4. Securely close the battery cover.



Figure 8.1: Low power warning indicator.

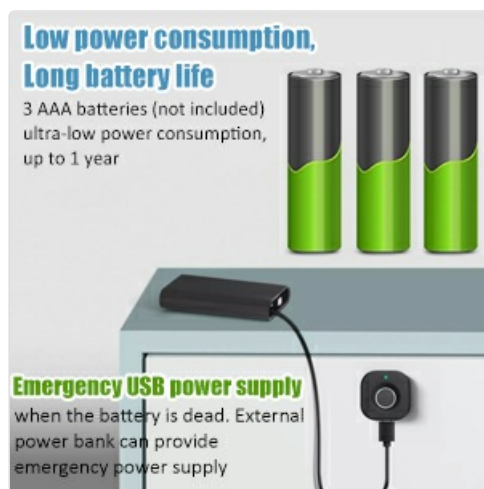


Figure 8.2: Battery compartment and emergency USB power supply.

8.2. Emergency Power Supply

If the batteries completely run out and you cannot unlock the device, you can connect an external power bank via the Type-C USB port on the fingerprint panel for temporary emergency power. This will allow you to unlock the device and replace the internal batteries.

8.3. Cleaning

Wipe the fingerprint sensor and the lock's exterior with a soft, dry cloth. Avoid using abrasive cleaners or

solvents, as these can damage the surface or electronic components.

9. TROUBLESHOOTING

- **Lock does not respond to fingerprint:**

- Ensure your finger is clean and dry.
- Try different angles or positions of your finger on the sensor.
- Verify that the fingerprint is correctly enrolled. If not, re-enroll it.
- Check battery level. Replace batteries if low.

- **Cannot connect to Bluetooth app:**

- Ensure Bluetooth is enabled on your smartphone.
- Make sure the lock is within Bluetooth range.
- Restart the app and try pairing again.
- Check battery level of the lock.

- **Lock is completely unresponsive:**

- The batteries may be completely depleted. Use the emergency USB power supply to temporarily power the lock and then replace the internal batteries.
- Ensure all cable connections are secure.

- **Lock mechanism is stuck:**

- Check for any obstructions preventing the lock from engaging or disengaging.
- Ensure the lock catch is properly aligned with the lock box.

10. PRODUCT VIDEO DEMONSTRATION

Watch this video for a visual demonstration of the Docooler Smart Biometric Fingerprint Cabinet Lock's features and operation.

Your browser does not support the video tag.



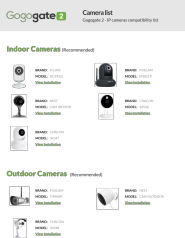

Video 10.1: Fingerprint Lock Product Display. This video demonstrates the installation and usage of the Docooler Smart Biometric Fingerprint Cabinet Lock, including fingerprint and app unlocking methods.

11. WARRANTY AND SUPPORT

Docooler products are designed for reliability and performance. For specific warranty information, please refer to the warranty card included with your purchase or contact Docooler customer support directly. If you encounter any issues not covered in this manual, please reach out to our support team for assistance.

Contact Information: Please refer to the product packaging or the official Docooler website for the most current customer support contact details.

Related Documents - e902fd28-958a-4f5c-a297-33c398b2a418

	<p>Docooler AD801 Infrared Forehead Thermometer User Manual and Product Certificate</p> <p>User manual and product certificate for the Docooler AD801 Infrared Forehead Thermometer, detailing its features, applications, precautions, and maintenance. Includes quality inspection information.</p>
	<p>Wall Mountable Bluetooth CD Player User Manual - docooler KC-909</p> <p>Comprehensive user manual for the docooler KC-909 Wall Mountable Bluetooth CD Player. This guide provides detailed information on features, specifications, basic operation, installation, remote control usage, background light settings, time and timer functions, sleep mode, warnings, and troubleshooting.</p>
	<p>Gogogate 2 IP Camera Compatibility List</p> <p>A comprehensive list of IP cameras compatible with the Gogogate 2 system, including brands, model numbers, and installation resources.</p>
	<p>SVANTEK Case Study: Train Vibration Impact on Buildings - FFT vs. 1/3 Octave Analysis</p> <p>Explore a SVANTEK case study comparing FFT and 1/3 octave analysis methods for assessing train-induced vibration impact on buildings. Learn how different standards interpret vibration data and the importance of structural context.</p>