

MOUNTUP MU0062

MOUNTUP Ultra Slim Full Motion TV Wall Mount Instruction Manual

Comprehensive guide for the MOUNTUP MU0062 Ultra Slim Full Motion TV Wall Mount, designed for 26-60" LED OLED QLED TVs. This manual provides detailed instructions for installation, operation, and maintenance to ensure optimal performance and safety.



INTRODUCTION

The MOUNTUP MU0062 Ultra Slim Full Motion TV Wall Mount offers a sleek, space-saving solution for mounting your television. Its design allows the TV to sit only 1.3 inches from the wall when fully retracted, blending seamlessly into your living space. This mount is engineered for durability and flexibility, providing a wide range of motion for optimal viewing angles.

- **Ultra Slim & Discreet Design:** Retracts to just 1.3 inches from the wall.
- **Full Motion Capability:** Features 10° tilt, 45° left/right swivel, and 3° leveling adjustment.
- **Universal Compatibility:** Supports most 26"-60" flat TVs up to 88lbs, with VESA patterns from 75x75mm to 400x400mm.
- **Sturdy and Safe:** Constructed from heavy-duty alloy steel with a strong six-arm design for enhanced stability.
- **Easy Assembly:** Includes an installation manual, bubble level, and necessary hardware for quick setup.

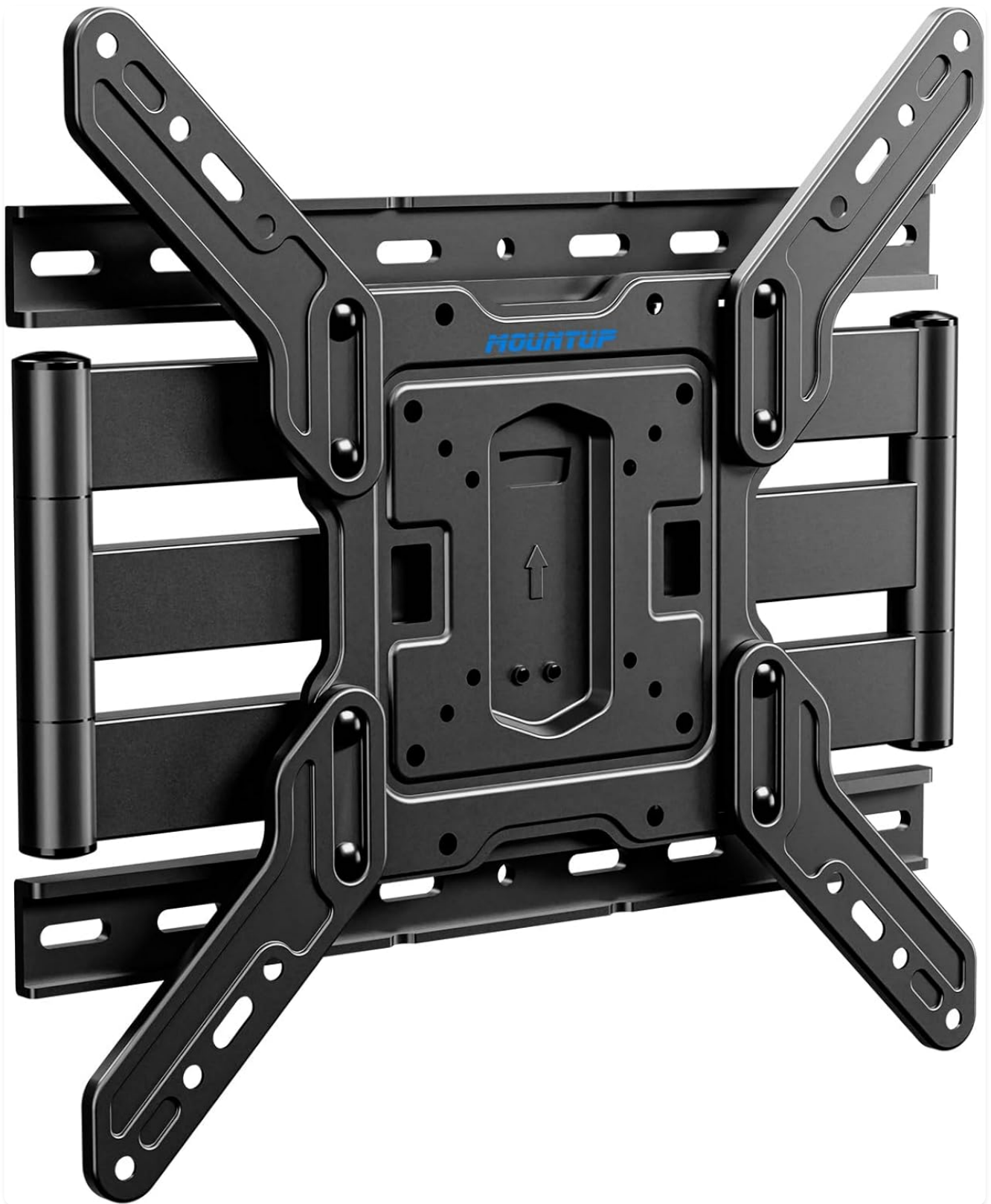


Image: The MOUNTUP MU0062 Ultra Slim Full Motion TV Wall Mount, showcasing its robust design and articulating arms.

SETUP AND INSTALLATION

Before beginning installation, ensure you have all components and tools as listed in the included packing list. It is highly recommended to review the full installation manual for detailed steps and safety precautions. This mount is suitable for wood studs (12-16 inches spacing), concrete walls, and brick walls. **It is NOT for drywall alone.**

Wall Type Compatibility

Compatible Wall Type

NOT for
18"/24" wood stud



Wood Stud

12"/16"/single stud



Concrete Wall
(Need anchor)



Brick Wall
(Need anchor)

Image: Diagram illustrating compatible wall types: wood stud (max 16" spacing), concrete wall (requires anchor), and brick wall (requires anchor). Drywall alone is not supported.

For concrete or brick wall installations, concrete anchors are required and can be requested from the manufacturer. Always use a stud finder to locate wood studs accurately.

Quick 3-Step Assembly Overview

1. **Attach TV Brackets:** Secure the mounting brackets to the back of your TV using the appropriate screws and spacers from the kit. Ensure the VESA pattern matches the mount's compatibility (75x75mm to 400x400mm).
2. **Mount Wall Plate:** Position the wall plate on your chosen wall location, ensuring it is level. Mark and drill pilot holes into the wood stud(s) or concrete/brick, then secure the wall plate using the provided lag bolts.
3. **Hang and Secure TV:** Carefully lift the TV and hook the attached brackets onto the wall plate. Secure the TV to the mount using the safety screws or locking mechanisms to prevent accidental dislodgement.



Image: Visual representation of the three main steps for installing the TV mount: attaching brackets to TV, mounting the wall plate, and hanging/securing the TV.

For a complete guide, please refer to the official [Installation Manual \(PDF\)](#).

OPERATION AND ADJUSTMENTS

The MOUNTUP MU0062 mount provides full motion capabilities to optimize your viewing experience from various positions in the room.

Extension and Tilt

The mount allows your TV to extend up to 14 inches from the wall, providing flexibility for viewing. It also features a 10° downward tilting angle, which helps reduce glare and improve viewing comfort.

No more TV glare and neck strain



Image: A TV mounted on the wall, extended forward and tilted downwards, demonstrating the mount's extension and tilt capabilities.

Swivel Adjustment

You can swivel your TV up to 45° to the left or right, depending on your TV size and wall proximity. This feature is ideal for viewing from different seating areas.



Image: A TV mounted on a wall, swiveled to the side, illustrating the mount's swivel range. The maximum swivel angle depends on the TV size.

Leveling Adjustment

After installation, the mount allows for a $\pm 3^\circ$ leveling adjustment to ensure your TV is perfectly horizontal.

Level After Installation



Image: A diagram showing a TV mount with arrows indicating a $\pm 3^\circ$ leveling adjustment capability after installation.

MAINTENANCE

To ensure the longevity and safe operation of your MOUNTUP TV wall mount, follow these simple maintenance guidelines:

- **Regular Inspection:** Periodically check all screws and connections to ensure they remain tight and secure. Over time, vibrations or frequent adjustments can loosen fasteners.
- **Cleaning:** Wipe the mount with a soft, dry cloth to remove dust. For stubborn marks, a slightly damp cloth can be used, followed by drying. Avoid abrasive cleaners or solvents that could damage the finish.
- **Lubrication:** The articulating joints are designed for smooth movement. If you notice any stiffness or squeaking, a small amount of silicone-based lubricant can be applied to the moving parts.
- **Weight Limit Adherence:** Never exceed the maximum weight capacity of 88lbs (40kg) for the mount. Overloading can lead to structural failure and damage to your TV or property.

TROUBLESHOOTING

If you encounter any issues with your MOUNTUP TV wall mount, consider the following common solutions:

- **TV Not Level:** Use the built-in leveling adjustment feature ($\pm 3^\circ$) to fine-tune the TV's horizontal position. Ensure the wall plate itself was installed level.
- **Mount Feels Flimsy/Wobbly:**
 - Verify all wall plate lag bolts are securely fastened into solid wood studs or appropriate concrete/brick anchors.
 - Ensure the TV brackets are properly seated and locked onto the wall plate.
 - Confirm your TV's weight and size are within the mount's specified limits (up to 88lbs, 26"-60").
 - Check that all articulating arm bolts are tightened.
- **Difficulty Adjusting Movement (Tilt/Swivel/Extension):**
 - Check for any obstructions behind the TV or mount.
 - Ensure no cables are snagged or preventing movement.
 - Apply a small amount of silicone lubricant to the joints if they feel stiff.
- **TV Not Sitting Flush to Wall (when retracted):**
 - Ensure all cables are neatly managed and not creating bulk behind the TV.
 - Verify that the TV's VESA mounting holes are not recessed in a way that prevents full retraction without additional spacers (which should be used if needed).

If problems persist, please contact MOUNTUP customer support for assistance.

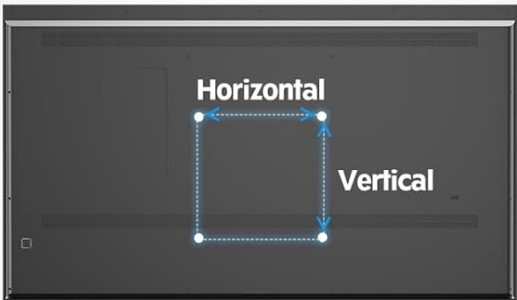
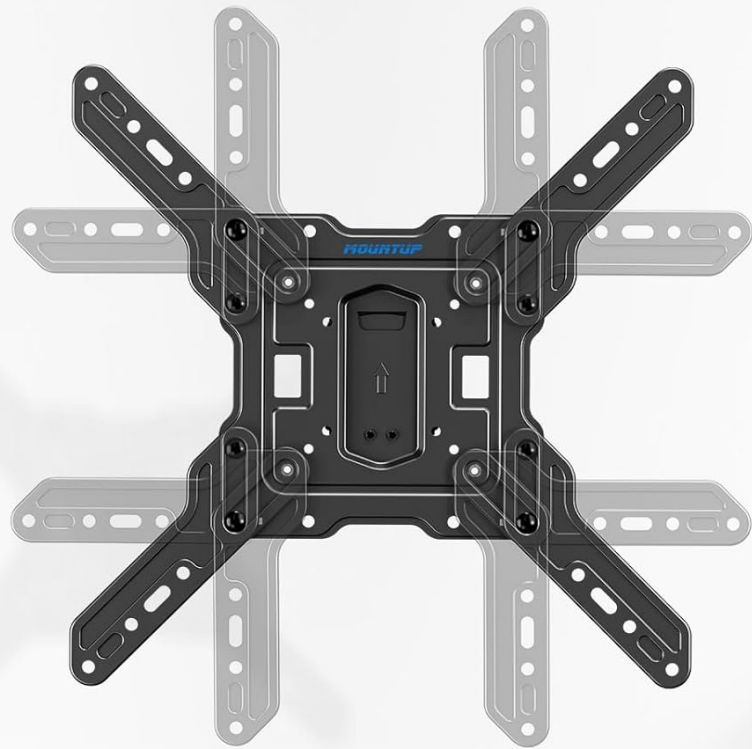
PRODUCT SPECIFICATIONS

Feature	Detail
Brand	MOUNTUP
Model Number	MU0062
Compatible TV Sizes	26" - 60"
Weight Capacity	Up to 88 lbs (40 kg)
VESA Compatibility	75x75mm to 400x400mm
Distance from Wall (Retracted)	1.3 inches
Max Extension from Wall	14 inches
Tilt Angle	+5° / -10°
Swivel Angle	$\pm 45^\circ$ (Max, depends on TV size)
Leveling Adjustment	$\pm 3^\circ$
Material	Heavy-duty Alloy Steel
Color	Black
Item Weight	11.38 pounds
Product Dimensions	17.1 x 16 x 1.3 inches

VESA Pattern Compatibility

The VESA (Video Electronics Standards Association) pattern refers to the spacing of the four mounting holes on the back of your TV. This mount supports a wide range of VESA patterns, ensuring compatibility with many TV models.

Compatible VESA Pattern



TV VESA

100x100mm	100x200mm	100x150mm
200x150mm	200x100mm	200x200mm
200x250mm	200x300mm	200x400mm
300x200mm	400x200mm	400x300mm
300x250mm	300x300mm	400x400mm

Image: A diagram showing various compatible VESA mounting patterns (e.g., 100x100mm, 200x200mm, 400x400mm) supported by the TV mount.

WARRANTY INFORMATION

MOUNTUP products are designed for durability and reliability. For specific warranty terms and conditions applicable to your MU0062 Ultra Slim Full Motion TV Wall Mount, please refer to the warranty card included with your product or visit the official MOUNTUP website. Typically, manufacturer warranties cover defects in materials and workmanship under normal use.

CUSTOMER SUPPORT

For further assistance, technical support, or inquiries regarding your MOUNTUP TV wall mount, please contact MOUNTUP customer service. You can find more information and contact details by visiting the official MOUNTUP

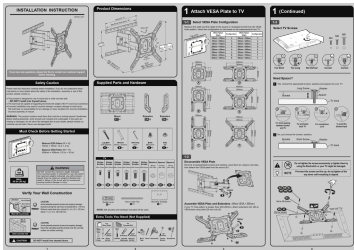
store:

Visit MOUNTUP Store

© 2023 MOUNTUP. All rights reserved.

This manual is for informational purposes only. MOUNTUP is not responsible for any damage or injury caused by incorrect installation or use of this product.

Documents - MOUNTUP – MU0062

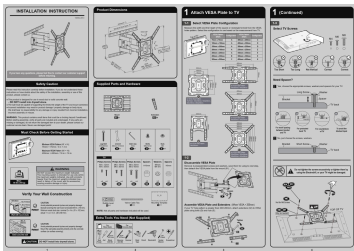


[\[pdf\]](#) User Manual Quick Start Guide Installation Guide Instructions Dimension Guide

MOUNTUP Ultra Slim Full Motion TV Wall Mount 1 3 Thin Low Profile Bracket for 26 60 LED OLED QLED TVs Smooth Swivel Tilt Extension Max Vesa 400x400mm Up to 88lbs Fits Single 12 16 Studs MU0062 MountMU0062 Installation Manual MOUNTUP B0DDXQMT13 B07ZSGYCJD B0DZNTSHFY B0CMZXK4X4B1N5ku60D3Lm media amazon images I B1N5ku60D3L |||

INSTALLATION INSTRUCTION YZ2352N_US4.0 Product Dimensions Max W403o5dmSmtu d1s7.S1p ace: 16 Swivel 45 If you have any questions, please feel free to contact our customer support before returning. Safety Caution Please read this instruction carefully before installation. If you do not understand...

lang:en score:17 filesize: 2.8 M page_count: 2 document date: 2025-02-21



[MOUNTUP YZ2352 US1.0 TV Wall Mount Installation Guide](#)

Detailed installation instructions for the MOUNTUP YZ2352 US1.0 TV Wall Mount. This guide covers mounting to wood studs and concrete walls, VESA compatibility, and safety precautions for a secure and optimal viewing experience. Supports TVs up to 88 lbs with VESA patterns up to 400x400mm.

lang:en score:13 filesize: 9.48 M page_count: 2 document date: 2023-11-20