

[Manuals.plus](#) /

› [DOOGEE](#) /

› DOOGEE S41 MAX Rugged Smartphone User Manual

DOOGEE S41 MAX

DOOGEE S41 MAX Rugged Smartphone User Manual

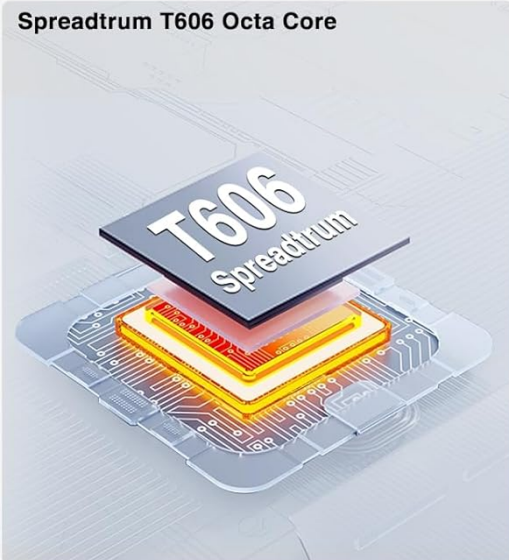
Model: S41 MAX

1. OVERVIEW

The DOOGEE S41 MAX is a rugged smartphone designed for durability and performance in challenging environments. It features a robust build, a long-lasting battery, and the Android 13 operating system, providing a reliable mobile experience for outdoor enthusiasts and professionals.

DOOGEE S41 MAX Rugged Smartphone

Spreadtrum T606 Octa Core



16GB RAM(6GB+10GB Extended RAM)
256GB ROM (1TB Expandable)



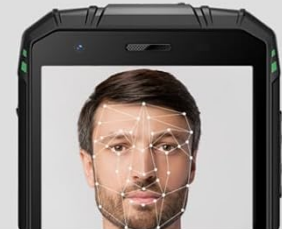
6300mAh Large Battery



13MP+8MP Camera



Support Face Unlock



5.5" IPS HD+ Display



NFC Supports Google Pay



Android 13.0



Figure 1: Front view of the DOOGEE S41 MAX Rugged Smartphone.

2. PACKAGE CONTENTS

Verify that all items are present in your product package:

- DOOGEE S41 MAX Rugged Smartphone
- Power Adapter
- USB Type-C Cable
- SIM Ejector Tool
- Quick Start Guide
- Warranty Card

3. DEVICE LAYOUT

Familiarize yourself with the physical components of your DOOGEE S41 MAX.

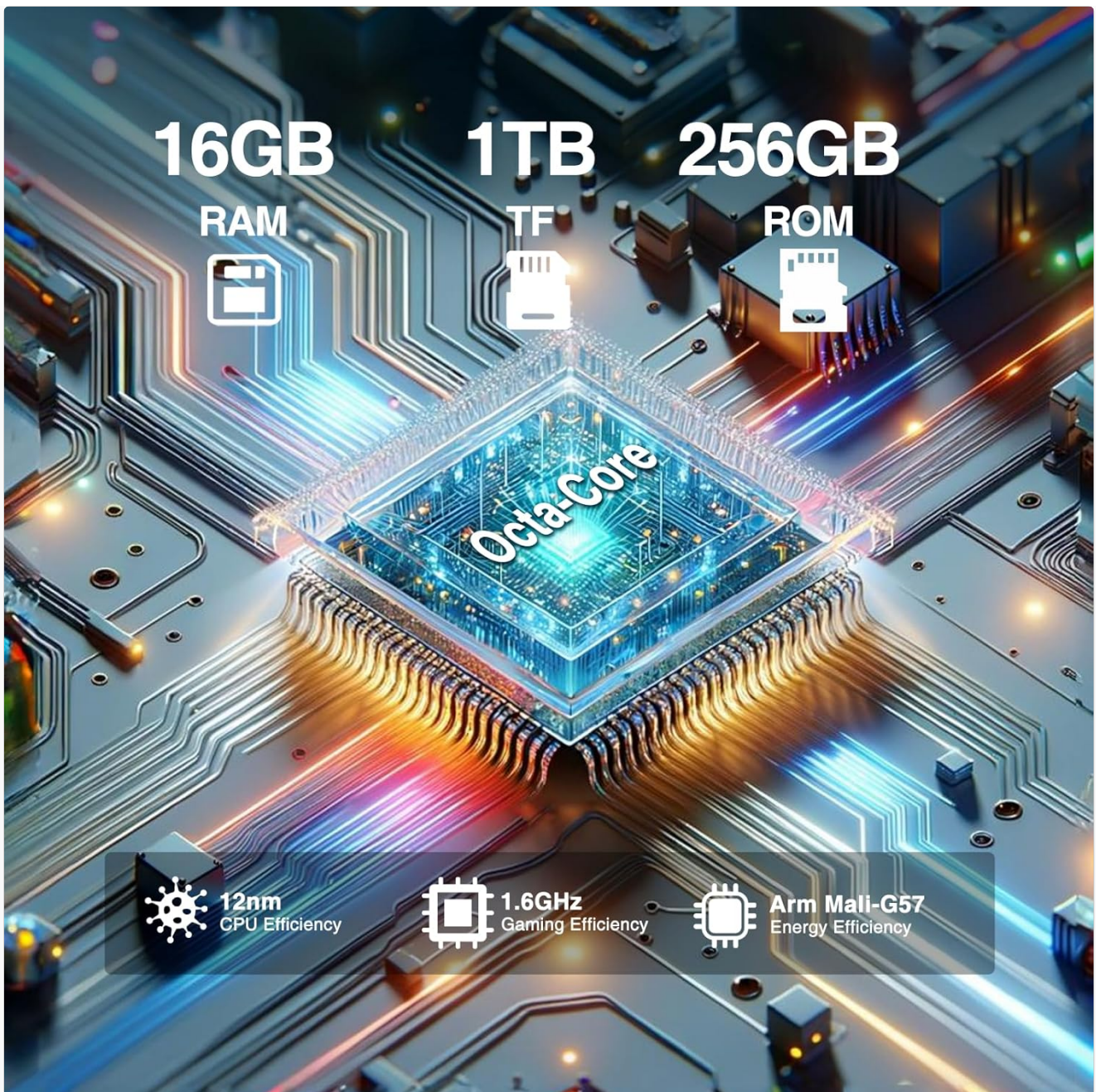


Figure 2: Back view of the smartphone, highlighting the camera module.

- **Front Camera:** Located at the top of the display.
- **Display:** 5.5-inch HD+ IPS screen.
- **Power Button:** Typically on the right side, used to power on/off and wake/sleep the device.
- **Volume Buttons:** Usually next to the power button, for adjusting volume.
- **USB Type-C Port:** For charging and data transfer, often covered by a protective flap.
- **Speaker:** Located at the bottom or back of the device.
- **Rear Camera Module:** Includes the 13MP main camera and LED flash.
- **Fingerprint Sensor:** Integrated for secure unlocking.
- **SIM/TF Card Slot:** Located on the side, protected by a cover.

4. SETUP

4.1. SIM and TF Card Installation

The DOOGEE S41 MAX supports dual Nano SIM cards or one Nano SIM card and one TF (microSD) card for

expanded storage.

1. Locate the SIM/TF card slot on the side of the phone.
2. Carefully open the protective cover.
3. Insert the SIM ejector tool into the small hole next to the tray to release it.
4. Place your Nano SIM card(s) and/or TF card into the tray with the gold contacts facing down, ensuring they are correctly oriented.
5. Gently push the tray back into the slot until it is flush with the phone's body.
6. Close the protective cover securely to maintain water and dust resistance.



Figure 3: Correct placement of SIM and TF cards in the tray.

4.2. Initial Power On and Basic Setup

1. Press and hold the Power button until the DOOGEE logo appears.
2. Follow the on-screen prompts to select your language, region, and connect to a Wi-Fi network.
3. Sign in with your Google account or create a new one to access Google services and the Play Store.
4. Set up your preferred screen lock method (PIN, pattern, password, fingerprint, or face unlock).

5. OPERATING YOUR SMARTPHONE

5.1. Android 13 Interface

The DOOGEE S41 MAX runs on Android 13, offering enhanced privacy controls, customizable themes, and improved performance.



Embrace 6300mh Large Battery

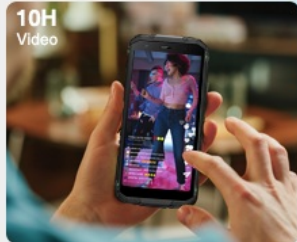
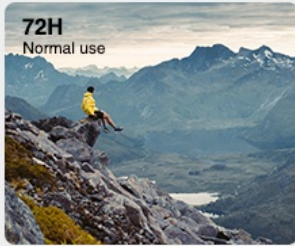
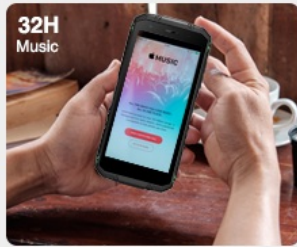


Figure 4: Overview of the Android 13 operating system interface.

5.2. Calls and Messaging

- **Making Calls:** Open the Phone app, enter the number, and tap the call icon.
- **Sending Messages:** Open the Messages app, tap 'Start chat', enter recipient and message, then send.

5.3. Camera Functions

The phone is equipped with a 13MP main camera and an 8MP front camera. Various modes are available for different shooting scenarios.

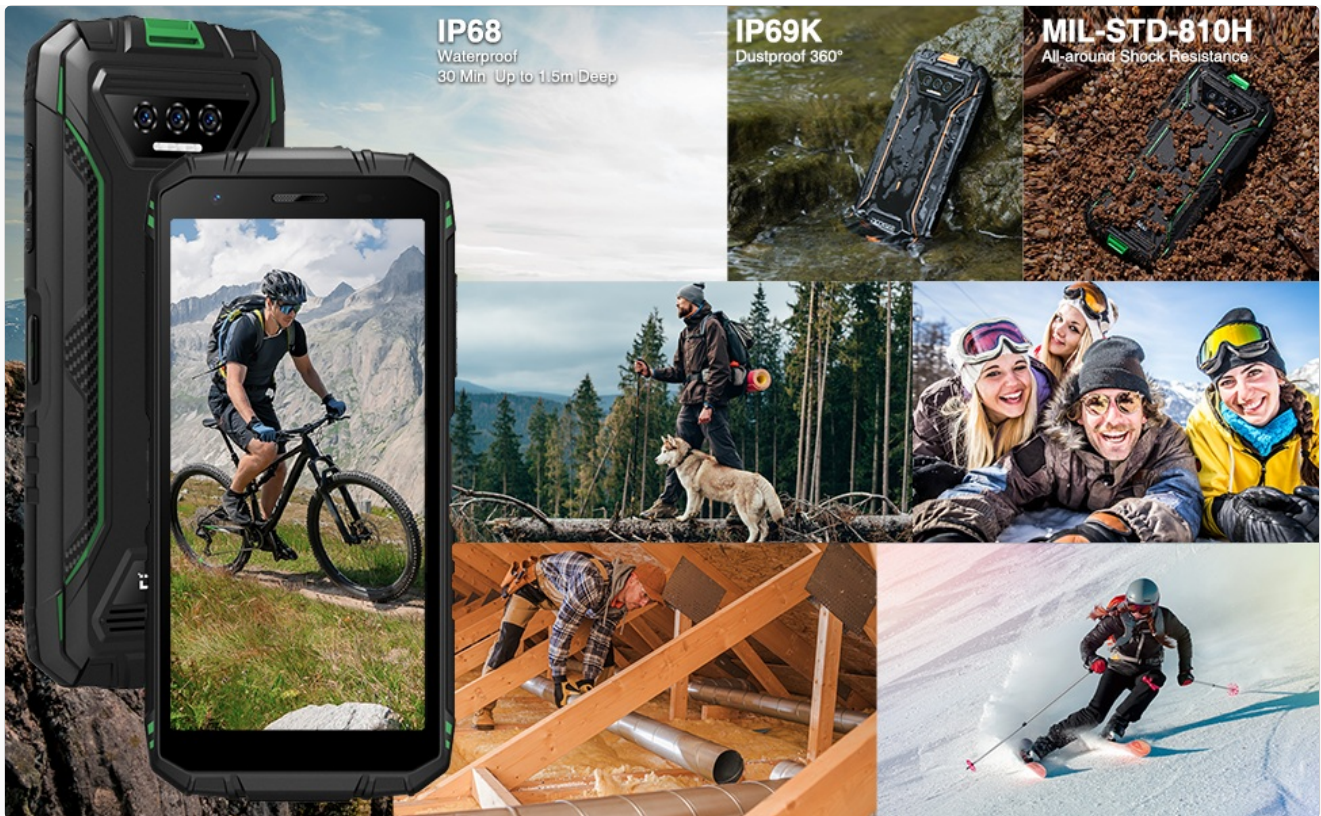


Figure 5: Camera features including main and front cameras, and various shooting modes.

- **Standard Photo:** Point and shoot for everyday photos.
- **Portrait Mode:** Creates a depth-of-field effect for subjects.
- **Night Mode:** Enhances photos taken in low-light conditions.
- **Underwater Camera:** Allows taking photos and videos while submerged (ensure all ports are sealed).

5.4. Connectivity

- **Wi-Fi:** Connect to wireless networks via Settings > Network & internet > Wi-Fi.
- **Mobile Data (4G):** Enable mobile data for internet access when Wi-Fi is unavailable.
- **NFC:** Use for contactless payments (Google Pay) and quick pairing with other NFC-enabled devices. Activate via Settings > Connected devices > Connection preferences > NFC.
- **OTG:** Connect USB devices like flash drives or use the phone to charge other devices with an OTG cable.

5.5. Security Features

- **Face Unlock:** Register your face for quick and secure unlocking.
- **Fingerprint Recognition:** Register your fingerprint(s) for an alternative secure unlock method.

5.6. Battery Management

The DOOGEE S41 MAX features a 6300mAh battery for extended usage.



Figure 6: Expected battery performance for standby, normal use, calling, music, and video playback.

- **Charging:** Use the provided USB Type-C cable and power adapter for optimal charging.
- **Battery Saver:** Enable Battery Saver mode in Settings to extend battery life when needed.

6. MAINTENANCE

6.1. Ruggedness and Protection

The DOOGEE S41 MAX is designed to withstand harsh conditions, certified with IP68, IP69K, and MIL-STD-810H standards.

5.5" IPS HD+ Vivid Screen



Figure 7: Visual representation of the phone's IP68, IP69K, and MIL-STD-810H certifications.

- **IP68:** Water resistant up to 1.5 meters for 30 minutes. Ensure all port covers are securely closed before exposure to water.
- **IP69K:** Resistant to high-pressure, high-temperature water jets and dust ingress.
- **MIL-STD-810H:** Military-grade durability against drops (up to 1.5 meters), shocks, and extreme temperatures.

6.2. Cleaning and Care

- Clean the device with a soft, damp cloth. Avoid harsh chemicals.
- If the device has been exposed to saltwater, rinse it thoroughly with fresh water and dry completely before charging or opening any ports.

6.3. Software Updates

Regularly check for and install software updates to ensure optimal performance and security. Go to Settings > System > System update.

7. TROUBLESHOOTING

This section addresses common issues you might encounter with your DOOGEE S41 MAX.

Issue	Possible Solution
Phone does not power on	Ensure the battery is charged. Connect to the charger for at least 10 minutes, then try powering on again. If unresponsive, perform a force restart by holding the Power button for 10-15 seconds.

Issue	Possible Solution
Poor network signal	Check if the SIM card is correctly inserted. Try moving to an area with better network coverage. Restart the phone.
Apps crashing or freezing	Clear the cache of the problematic app (Settings > Apps > [App Name] > Storage & cache > Clear cache). Update the app to the latest version. If the issue persists, uninstall and reinstall the app.
Battery drains quickly	Reduce screen brightness. Close unused apps running in the background. Disable Wi-Fi, Bluetooth, and GPS when not in use. Check battery usage in Settings to identify power-hungry apps.
Cannot connect to Wi-Fi	Ensure Wi-Fi is enabled. Restart your router and the phone. Forget the network and reconnect.

For more complex issues, please refer to the official DOOGEE support website or contact customer service.

8. SPECIFICATIONS

Key technical specifications for the DOOGEE S41 MAX Rugged Smartphone:

Feature	Specification
Model	S41 MAX
Operating System	Android 13
RAM	6GB (expandable to 16GB virtual memory)
Internal Storage	256GB ROM
Expandable Storage	Up to 1TB via TF card
Display	5.5-inch HD+ IPS (720 x 1440 resolution, 400 Nits brightness)
Main Camera	13MP
Front Camera	8MP
Battery Capacity	6300mAh
Charging	10W Fast Charging
Durability	IP68, IP69K, MIL-STD-810H
Connectivity	4G Dual SIM, Wi-Fi, Bluetooth, NFC, GPS+GLONASS+Beidou+Galileo
Security	Face Unlock, Fingerprint Recognition

9. OFFICIAL PRODUCT VIDEO

Watch the official product video for a visual overview of the DOOGEE S41 MAX Rugged Smartphone's features and capabilities.

Your browser does not support the video tag.

Video 1: Official product video showcasing the DOOGEE S41 MAX Rugged Smartphone's design, durability, and key functions.

10. WARRANTY AND SUPPORT

DOOGEE provides comprehensive after-sales service for your S41 MAX Rugged Smartphone:

- **Return Policy:** 30-day no-reason return period.
- **Warranty:** 2-year free warranty.
- **Technical Support:** Long-term technical support available.
- **Customer Service:** 24-hour online customer service.

For any issues or inquiries, please contact DOOGEE customer service. They aim to respond within 24 hours and provide effective solutions.