

[Manuals.plus](#) /

> [Monster](#) /

> Monster Smart Illuminence Orb+ User Manual

Monster MLB7-1076-RGB

Monster Smart Illuminence Orb+ User Manual

Model: MLB7-1076-RGB

Brand: Monster

INTRODUCTION

The Monster Smart Illuminence Orb+ is a portable LED light designed to transform any indoor or outdoor environment with unique, swirling, multi-colored, and dimmable light effects. This versatile device offers multiple placement options and can be controlled via a mobile app, touch controls, or voice commands through compatible smart assistants. Its water-resistant design and rechargeable battery ensure flexible use.

PACKAGE CONTENTS

- Monster Smart Illuminence Orb+
- Micro-USB Cable
- Built-in Rechargeable Battery



Image: The Monster Smart Illuminence Orb+ in its retail packaging, showcasing its features and design.

SETUP

1. **Initial Charge:** Before first use, fully charge the Orb+ using the included Micro-USB cable. Connect the cable to the Orb+ and a compatible USB power source. The charging indicator will show the status.
2. **Download the Monster Smart App:** Search for "Monster Smart App" on the Apple App Store or Google Play Store and install it on your smartphone or tablet.
3. **Pairing with App:**
 - Open the Monster Smart App and create an account or log in.
 - Follow the in-app instructions to add your Monster Smart Illuminence Orb+. Ensure your device is in pairing mode (refer to the app for specific instructions, usually involves a power cycle or holding a button).
 - Connect the Orb+ to your home Wi-Fi network as prompted by the app.
4. **Voice Assistant Integration:** For voice control, enable the Monster Smart skill/action in your Amazon Alexa, Google Assistant, or Apple Siri app and link your Monster Smart account.

OPERATING INSTRUCTIONS

Power On/Off

Press and hold the power button (location specified in product diagram, usually on the base) for a few seconds to turn the Orb+ on or off.

Mobile App Control

The Monster Smart App provides comprehensive control over your Orb+ light:

- **Color Selection:** Choose from a wide spectrum of colors and white tones.
- **Brightness Adjustment:** Dim or brighten the light to your desired level.
- **Lighting Modes:** Select from pre-set dynamic lighting effects, including swirling multi-colored flows.
- **Scheduling:** Set timers or schedules for the Orb+ to turn on/off or change modes automatically.
- **Music Sync:** Activate the built-in microphone feature to make the lights react to music or ambient sounds.

Your browser does not support the video tag.

Video: An overview of Monster Smart Lighting products, demonstrating app control, voice control, and various lighting effects in different home environments. This video highlights the versatility and smart features of the lighting ecosystem, including the Orb+.

Touch Control

The Orb+ features intuitive touch controls for quick adjustments:

- **Tap to Change Color:** Gently tap the surface of the Orb+ to cycle through pre-set color modes.
- **Hold to Adjust Brightness:** Press and hold the surface to gradually adjust brightness.

Voice Control

Control your Orb+ hands-free using compatible voice assistants:

- "Alexa, turn on the Orb+."
- "Hey Google, set Orb+ to blue."
- "Siri, dim the Orb+ to 50%."

PLACEMENT OPTIONS

The Monster Smart Illuminence Orb+ is designed for versatile placement to suit your needs:

- **Tabletop:** Place the Orb+ on any flat surface for ambient lighting.
- **Handheld:** Its portable design allows you to carry it with ease.
- **Hanging:** Utilize the integrated hanging feature to suspend the Orb+ for overhead illumination or decorative purposes.

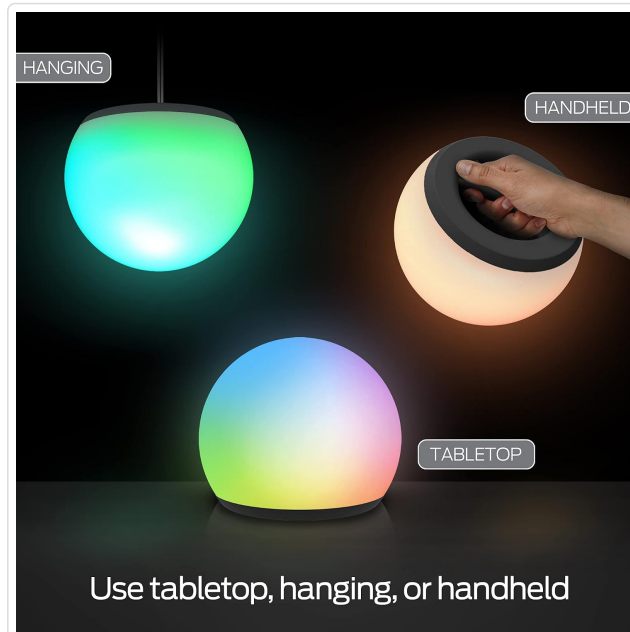


Image: The Orb+ shown in three different usage scenarios: hanging from above, held in hand, and resting on a tabletop, demonstrating its adaptable design.



Image: Multiple Orb+ lights illuminating various indoor and outdoor spaces, including a living room and a garden, showcasing their versatility for different environments.

FEATURES

- **Dynamic Lighting Effects:** Create unique, swirling, multi-colored, and dimmable light effects to suit any mood or occasion.
- **Water-Resistant Design:** Suitable for both indoor and outdoor use, providing flexibility in placement.
- **Rechargeable Battery:** Enjoy up to 6 hours of portable illumination on a single charge.
- **Touch Controls:** Easily change color modes with a simple tap.

- **Sound Reactive:** A built-in microphone allows the light to react and flash in sync with your music.
- **Smart Home Compatibility:** Seamlessly integrates with Amazon Alexa, Google Assistant, and Apple Siri for voice control.



Image: The Orb+ displaying vibrant, sound-reactive light patterns, with visual representations of sound waves on either side, illustrating its music sync feature.

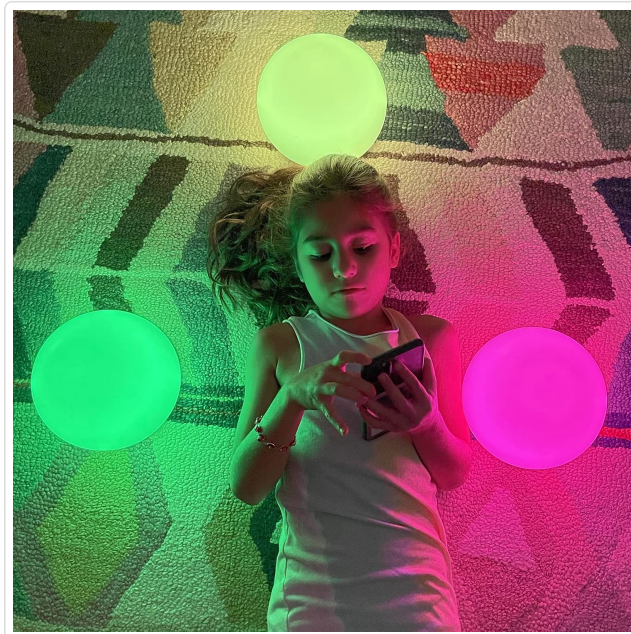


Image: A child lying on a rug, using a smartphone to control three Orb+ lights placed around them, demonstrating the mobile app control feature.

CHARGING

The Orb+ is equipped with a rechargeable battery that provides up to 6 hours of continuous use. To recharge, connect the included Micro-USB cable to the charging port on the Orb+ and plug the other end into a standard USB power adapter (not included) or a computer's USB port. A full charge typically takes approximately 3-4 hours.

CARE AND MAINTENANCE

- **Cleaning:** Wipe the Orb+ with a soft, damp cloth. Do not use abrasive cleaners or solvents.
- **Water Resistance:** The Orb+ is water-resistant, making it suitable for outdoor use. However, it is not designed to be submerged in water. Avoid exposing the charging port to moisture when not in use.

- **Storage:** Store the Orb+ in a cool, dry place when not in use for extended periods.

TROUBLESHOOTING

- **Orb+ not turning on:** Ensure the battery is charged. Connect to the Micro-USB cable and allow it to charge for at least 30 minutes before attempting to power on again.
- **Cannot connect to Wi-Fi/App:**
 - Ensure your Wi-Fi network is 2.4GHz. The Orb+ may not support 5GHz networks.
 - Check your Wi-Fi password.
 - Move the Orb+ closer to your Wi-Fi router.
 - Restart the Orb+ and your router.
 - Try resetting the Orb+ to factory settings (refer to app or product documentation for specific reset procedure).
- **Voice control not working:**
 - Verify that the Monster Smart skill/action is enabled in your voice assistant app.
 - Ensure your Monster Smart account is linked to your voice assistant.
 - Check your internet connection.
- **Lights not reacting to music:** Ensure the music sync feature is enabled in the Monster Smart App. Check that the Orb+'s microphone is not obstructed.

SPECIFICATIONS

Model Number	MLB7-1076-RGB
Brand	Monster
Product Dimensions	7"D x 7"W x 7"H
Light Source Type	LED
Power Source	Battery Powered
Battery Life	Up to 6 hours
Connectivity Technology	USB, Wi-Fi
Control Method	App, Voice, Touch
Controller Type	Amazon Alexa, Google Assistant, Siri
Indoor/Outdoor Usage	Indoor/Outdoor (Water Resistant)
Material	Plastic
Voltage	5 Volts (DC)
Water Resistance Level	Water Resistant

SAFETY INFORMATION

- Do not attempt to disassemble or modify the Orb+. This will void the warranty and may cause damage.
- Keep away from extreme temperatures and direct sunlight.

- Do not submerge the device in water. While water-resistant, it is not waterproof.
- Use only the provided Micro-USB cable for charging.
- Keep out of reach of small children and pets.

WARRANTY AND SUPPORT

For warranty information and customer support, please refer to the official Monster website or contact their customer service directly. Keep your proof of purchase for any warranty claims.