

Core Innovations DZAL320

Core Innovations PocketTunes Dozy The Dancing Alarm Bot

Model: DZAL320 | Brand: Core Innovations

INTRODUCTION

The Core Innovations PocketTunes Dozy is an animated LCD digital alarm clock designed to make waking up an engaging experience. It features simple controls for setting and managing alarms, expressive animated eyes, and the ability to switch between various display modes. With its built-in rechargeable battery, Dozy offers portability for use in different locations.

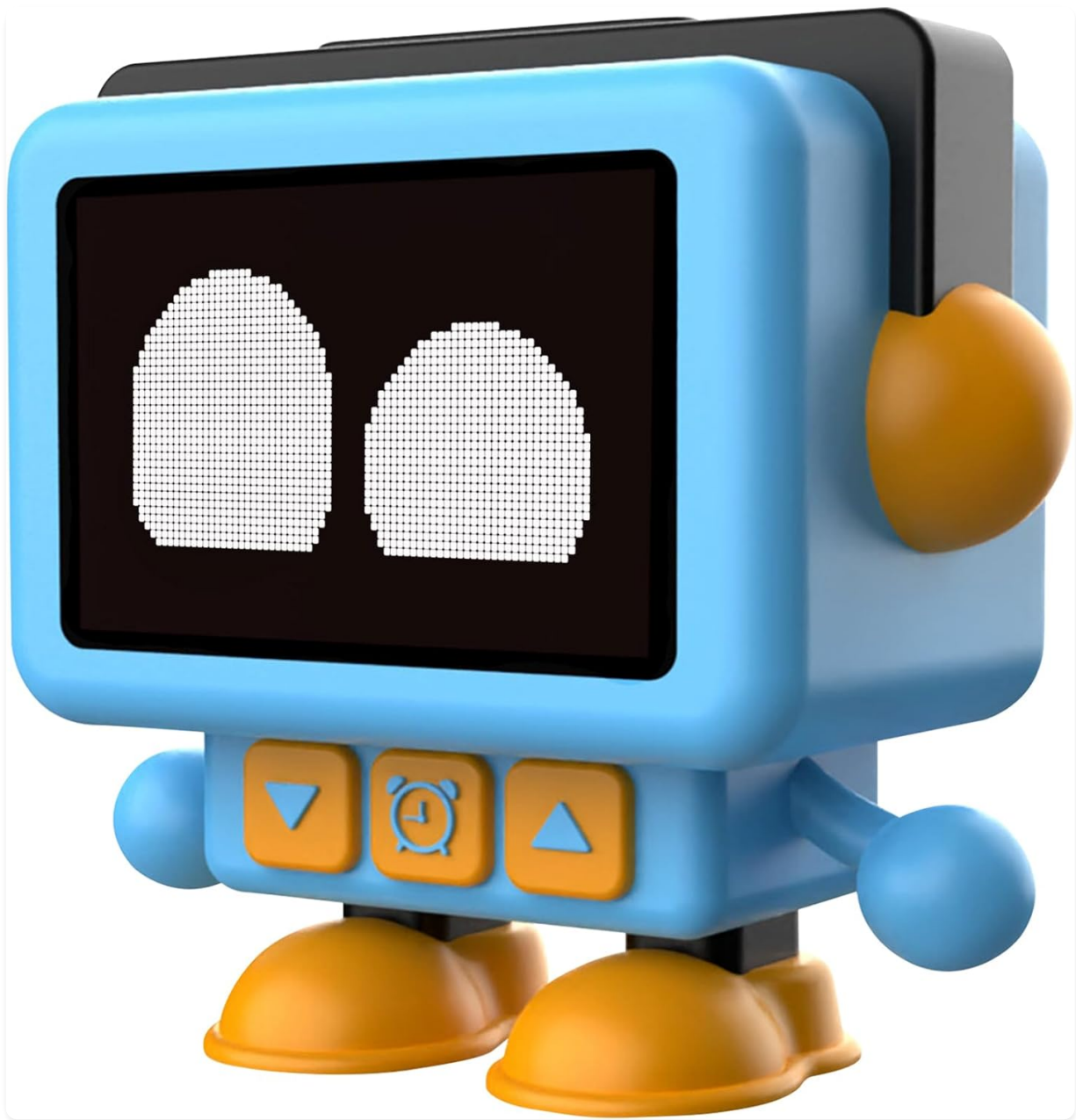


Figure 1: Core Innovations PocketTunes Dozy The Dancing Alarm Bot.

PRODUCT FEATURES

- **Easy-to-Use Alarm Clock:** Simple buttons facilitate setting, canceling, and updating alarms.
- **Fun Animation:** Dozy's eyes animate to display various expressive states, enhancing user interaction.
- **Different Clock Faces and Mode Changes:** Tap Dozy's headband to cycle through expression and clock face display modes.
- **Portable:** Equipped with a rechargeable battery for convenient use on the go.
- **Bluetooth Connectivity:** Allows for wireless audio streaming.
- **FM Radio Tuner:** Integrated FM radio functionality for listening to broadcasts.

SETUP

1. Charging the Device

Before initial use, fully charge Dozy using the provided USB-C charging cable. Connect the cable to the

charging port on Dozy and plug the other end into a compatible USB power adapter (not included). The device's display may indicate charging status.

2. Powering On/Off

To power on Dozy, locate the power button (refer to the device diagram in the operating section for exact location) and press and hold it until the LCD screen illuminates. To power off, press and hold the same button until the screen turns off.

3. Initial Time Setting

Upon first power-on or after a full discharge, you may need to set the current time. Use the navigation buttons (typically labeled with arrows or +/-) and the clock/alarm button to adjust the hour and minute. Consult the 'Operating Instructions' section for detailed button functions.

OPERATING INSTRUCTIONS

Control Buttons Overview

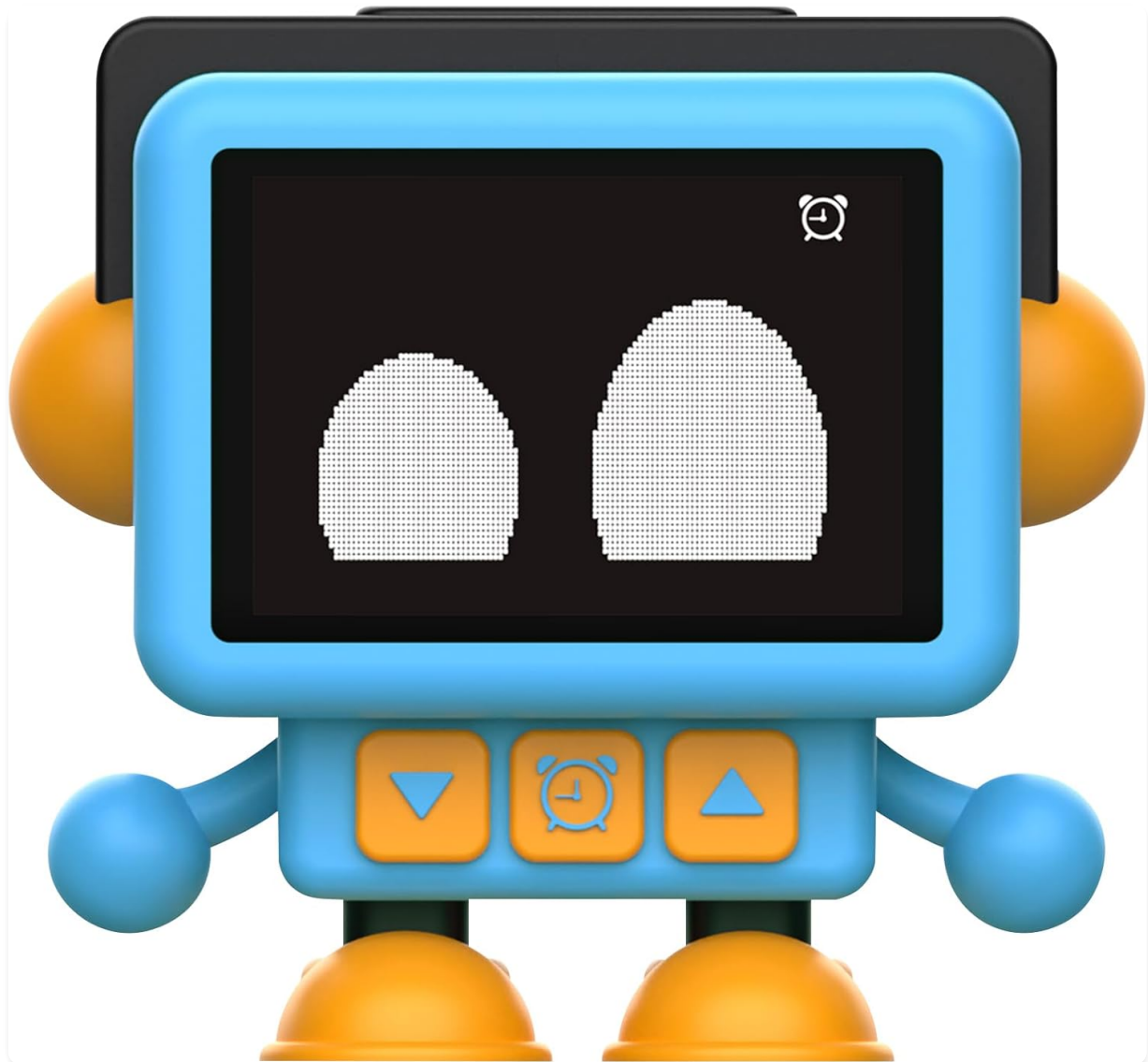


Figure 2: Dozy's front control buttons for navigation and alarm settings.

- **Up/Down Arrows (▲ / ▼):** Used for navigating menus, adjusting time, volume, or radio frequencies.
- **Clock/Alarm Button (🕒):** Used to enter time setting mode, alarm setting mode, or confirm selections.
- **Headband Tap Sensor:** Tapping Dozy's headband switches between different display modes (e.g.,

clock face, expressive eyes).

Setting and Managing Alarms

1. Press the Clock/Alarm button () to enter alarm setting mode.
2. Use the Up/Down arrow buttons (▲ / ▼) to adjust the desired alarm time.
3. Press the Clock/Alarm button () again to confirm the hour and then the minute.
4. To activate or deactivate an alarm, navigate to the alarm setting and use the appropriate button (often the Clock/Alarm button or a dedicated toggle) to switch it on or off.
5. When an alarm sounds, press the Clock/Alarm button () or tap Dozy's headband to snooze or cancel the alarm.



Figure 3: Dozy performs unique dances and music when an alarm activates.

Animated LCD Face and Display Modes

Dozy's LCD screen displays various animated expressions corresponding to its state (e.g., awake, sleeping, dancing, snoozing). Tapping the headband allows you to switch between these expressive modes and standard clock face displays.

Animated LCD Face

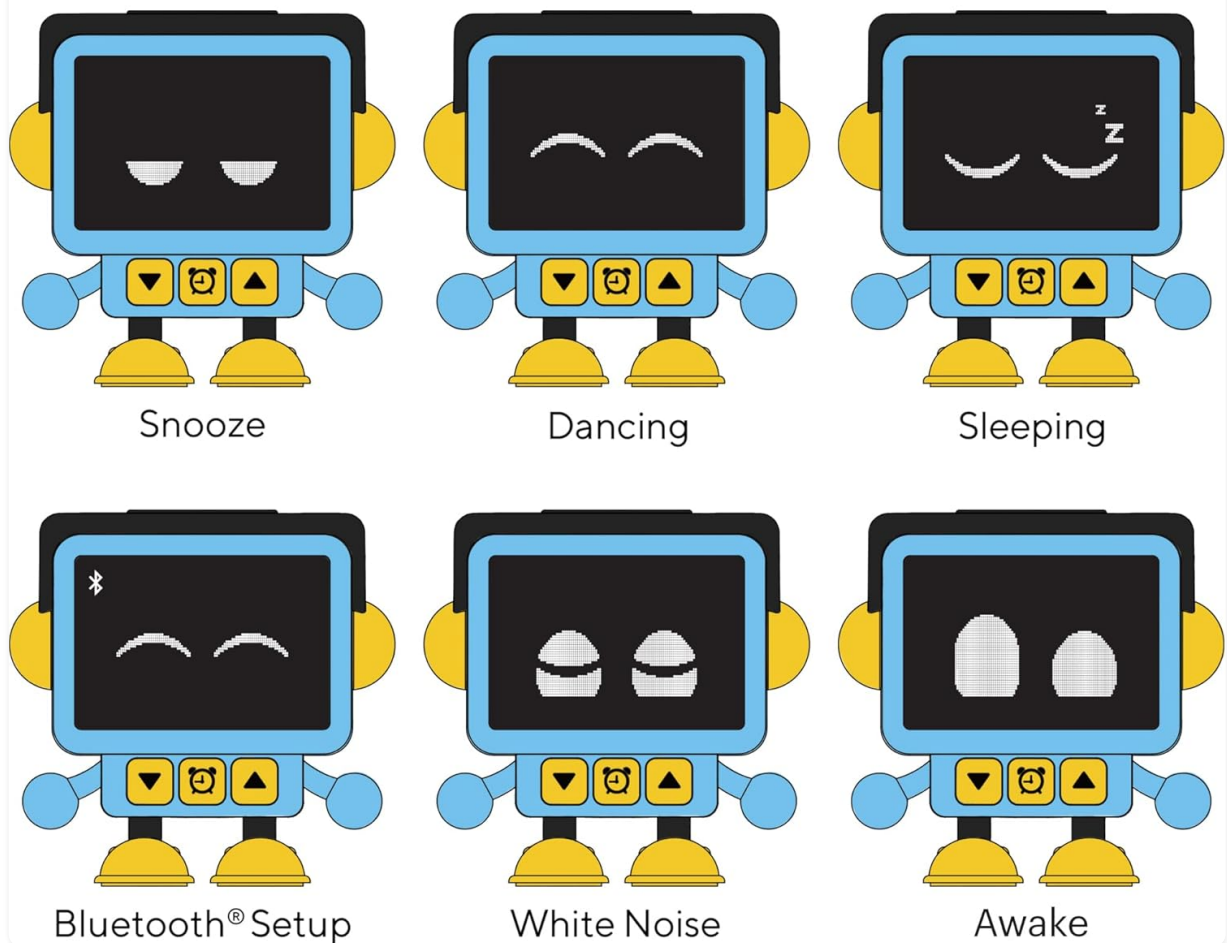


Figure 4: Examples of Dozy's animated LCD expressions.

Bluetooth Pairing

To pair Dozy with a Bluetooth-enabled device (e.g., smartphone, tablet) for audio streaming:

1. Ensure Dozy is powered on and in Bluetooth pairing mode (indicated by a specific icon or animation on the LCD screen, as shown in Figure 4).
2. On your external device, enable Bluetooth and search for available devices.
3. Select "Dozy" or a similar name from the list of found devices to initiate pairing.
4. Once paired, Dozy will confirm the connection, and you can stream audio wirelessly.

FM Radio Tuner

Dozy includes an FM radio tuner. To access and operate the FM radio:

1. Switch to FM radio mode using the mode button or by cycling through display modes via the headband tap sensor.
2. Use the Up/Down arrow buttons (▲ / ▼) to scan for and select radio stations.
3. Adjust the volume using the appropriate controls (refer to device-specific volume adjustment instructions if not covered by arrow buttons).

FM Radio Tuner



Figure 5: Dozy's display showing FM radio tuner interface.

MAINTENANCE

Cleaning

To clean Dozy, gently wipe the surface with a soft, dry cloth. For stubborn marks, a slightly damp cloth can be used, ensuring no moisture enters the device's ports or openings. Do not use abrasive cleaners, solvents, or strong chemicals, as these may damage the finish or internal components.

Battery Care

Dozy is equipped with a rechargeable Lithium Ion battery. To prolong battery life, avoid fully discharging the battery frequently. Recharge the device when the battery indicator shows low power. If storing the device for an extended period, charge it to approximately 50% and recharge every few months to prevent deep discharge.

TROUBLESHOOTING

- **Device Not Powering On:** Ensure the device is fully charged. Connect it to a power source and allow it to charge for at least 30 minutes before attempting to power on again.
- **Alarm Not Sounding/Stopping:** Verify that the alarm is correctly set and activated. Check the volume level. If the alarm is active and unresponsive, try a soft reset by holding the power button for an extended period (e.g., 10-15 seconds) until the device restarts.
- **Bluetooth Pairing Issues:** Ensure Dozy is in pairing mode. Turn off and on Bluetooth on your external

device. Move Dozy closer to the external device. Clear previous Bluetooth connections on both devices and try pairing again.

- **Display Not Responding to Headband Tap:** Ensure the device is powered on and not in a locked mode. Try gently tapping the headband in different spots.
- **Poor FM Radio Reception:** Reposition Dozy to improve signal reception. Ensure there are no large metallic objects nearby that could interfere with the signal.

SPECIFICATIONS

Brand	Core Innovations
Model Number	DZAL320
Display Type	Digital LCD
Product Dimensions	4.72"W x 4.33"H
Item Weight	14.2 ounces
Power Source	Battery Powered (Rechargeable Lithium Ion)
Batteries Included	Yes (1 Lithium Ion)
Connectivity	Bluetooth
Special Features	Alarm, Animated LCD Face, FM Radio Tuner, Portable
Manufacturer	DP Audio Video
UPC	810111501781

Dimensions

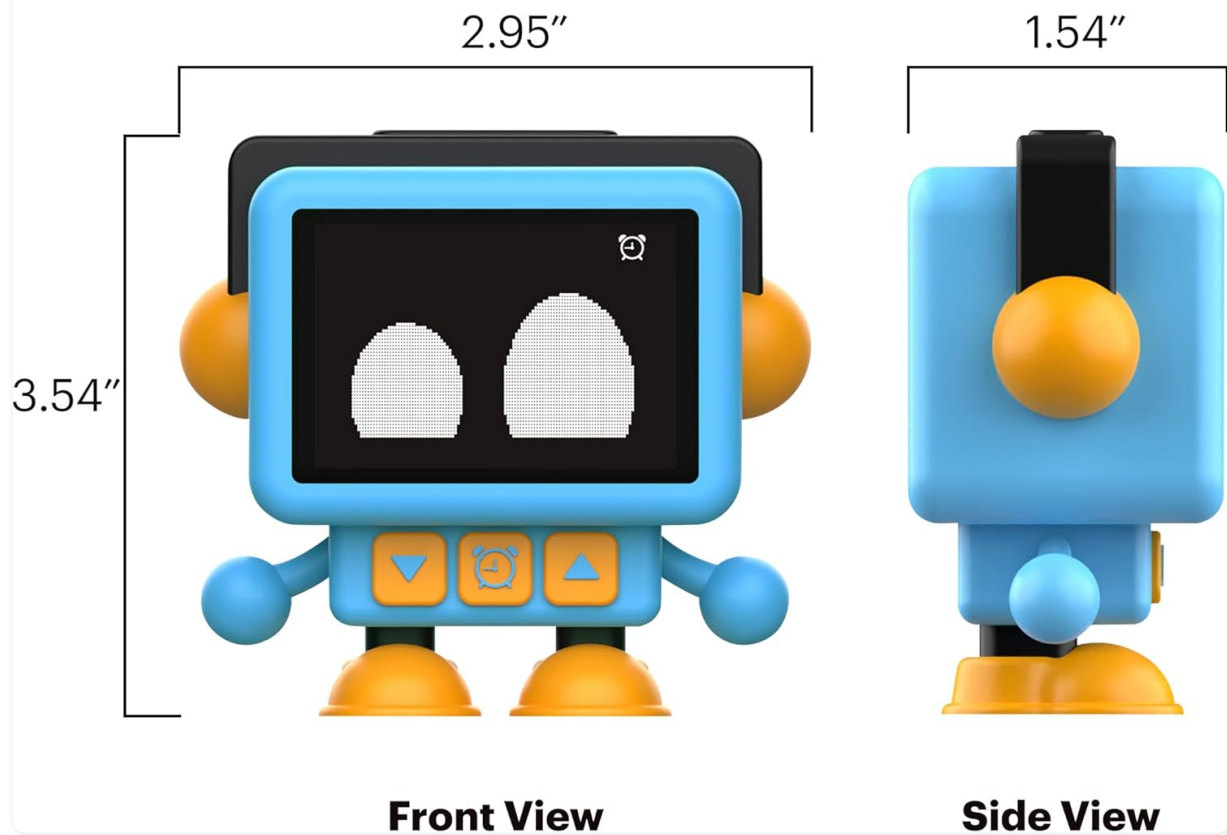


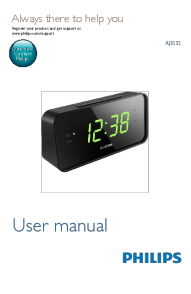
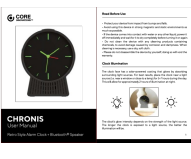




Figure 6: Product dimensions of Dozy.

WARRANTY AND SUPPORT

For warranty information, technical support, or service inquiries regarding your Core Innovations PocketTunes Dozy, please refer to the documentation included with your product or contact Core Innovations customer service directly. Contact details can typically be found on the manufacturer's official website or on the product packaging.

	<p>Dozy 2AVRVDZAL320 User Manual</p> <p>User manual for the Dozy 2AVRVDZAL320, detailing its features, operation, and specifications.</p>
	<p>Limitless LifeClock User Manual - Features, Setup, and Specifications</p> <p>Comprehensive user manual for the Limitless LifeClock, covering setup, features, technical specifications, safety information, alarm settings, medicine reminders, photo frame functionality, and charging capabilities.</p>
	<p>Philips AJ3232 Clock Radio User Manual</p> <p>User manual for the Philips AJ3232 clock radio, providing instructions on setup, operation, listening to the radio, alarm features, and troubleshooting. Learn how to set the time, tune to stations, use the alarm, and more.</p>
	<p>Core Innovations Chronis Retro Style Alarm Clock + Bluetooth Speaker User Manual</p> <p>User manual for the Core Innovations Chronis Retro Style Alarm Clock + Bluetooth Speaker, covering setup, features, and warranty information.</p>
	<p>Merkury Soundcharge MIC-WCR01-199 User Manual: Bluetooth Speaker, Alarm Clock & Wireless Charger Guide</p> <p>Comprehensive user guide for the Merkury Soundcharge (MIC-WCR01-199). Learn how to set up and use its Bluetooth speaker, alarm clock, and wireless charging features. Includes detailed instructions, specifications, and troubleshooting tips.</p>
	<p>Soundcore Wakey User Manual: Features, Setup, and Operation</p> <p>Comprehensive user manual for the Soundcore Wakey by Anker Innovations. Learn about its alarm clock, Bluetooth speaker, wireless charging, FM radio, and app features. Model A3300.</p>